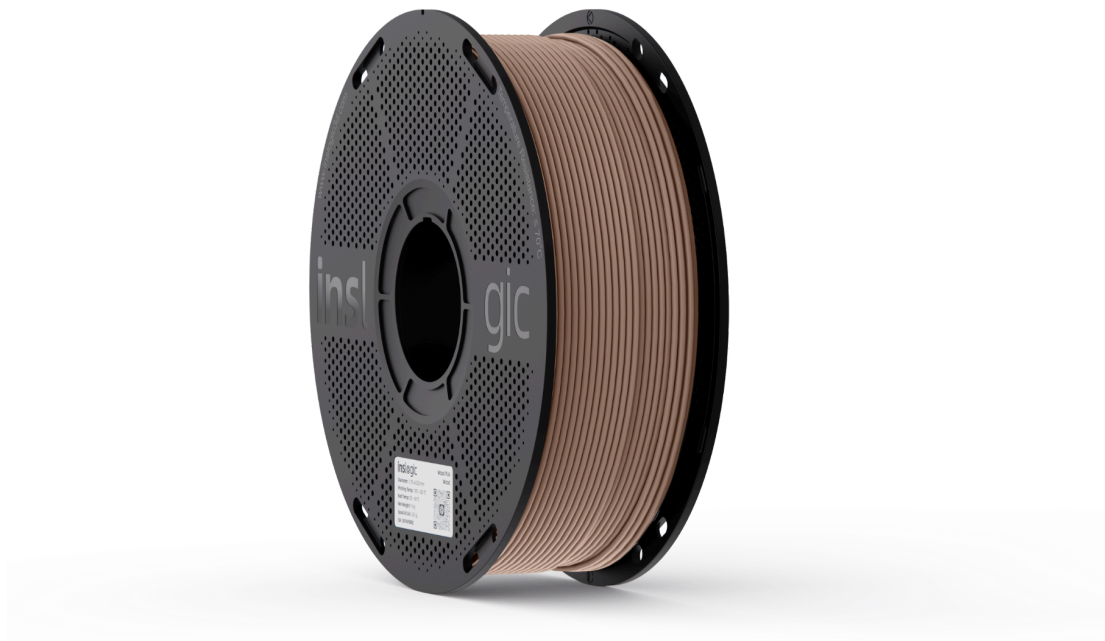


## TECHNICAL DATA SHEET Inslogic WoodFill PLA Filament



Inslogic WoodFill material contains an optimized proportion of real wood particles, giving printed products a wood-like texture, natural scent, and feel. It is both visually attractive and easy to print, making it ideal for creating vivid textured products such as crafts and decorative objects.

### Key Features

- Easy to print
- Contains real wood particles
- 100% bio-based & eco-friendly
- Aesthetically appealing wood finish
- Pleasant wood scent during and after printing

### Applications

- Rapid prototyping & functional part production
- Art & design
- Architecture models
- Education
- Everyday use



### Specifications

Material Name	Inslogic WoodFill PLA Filament
Diameter	1.75 ± 0.02 mm
Net Filament Weight	1 kg

### Recommended Print Settings

Drying Settings	50 °C, 4h
Nozzle Size	0.4, 0.6 mm
Nozzle Temperature & Printing Speed	195 - 205 °C at 50 - 100 mm/s 205 - 215 °C at 100 - 150 mm/s 215 - 260 °C at 150 - 400 mm/s
Bed Temperature	50 - 60 °C
Cooling Fan Speed	100%
Bed Type	Textured PEI Sheet, Cool Plate

### Physical Properties

Property	Method	Metric
Density	ISO1183	1.10 g/cm <sup>3</sup>
Melting Temperature, 10 °C/min	ISO11357-3	164 °C
Glass Transition Temperature, 10 °C/min	ISO11357-3	60 °C
Heat Deflection Temperature at 0.45 MPa	ISO306	55 °C
Shore D Hardness	ISO868	77D



## Mechanical Properties

Property	Method	Metric
Tensile Strength	ISO527/2	38.90 MPa
Elongation at Break	ISO527/2	3.10%
Flexural Strength	ISO178	68.30 MPa
Flexural Modulus	ISO178	3217 MPa
Izod Impact, Notched (X - Y, 23 °C)	ISO180	5.30 KJ/m <sup>2</sup>



3, 13/F, Grand City Plaza  
1-17 Sai Lau Kok Road  
Tsuen Wan, New Territories  
Hong Kong

### Contact

WhatsApp: (852) 6268 5255  
Sales: [sales@inslogic3d.com](mailto:sales@inslogic3d.com)  
Support: [support@inslogic3d.com](mailto:support@inslogic3d.com)

### Disclaimer:

To the best of our knowledge, the information contained herein is accurate. However, Inslogic, Inc. makes no warranty, expressed or implied, regarding the accuracy of these results to be obtained from the use thereof. The results presented in this data sheet are just for your information and comparison. They should not be used for project specifications or its quality evaluation. In view of the many factors that may affect the processing and application of our product, these data do not relieve processors from carrying out their own investigations and tests; neither do these data imply any guarantee of certain properties, nor the suitability of the product for a specific purpose.

Each user is responsible for determining the safety, lawfulness, technical suitability, and disposal/recycling practices of Inslogic materials for the intended application. Inslogic makes no warranty of any kind unless announced separately, to the fitness for any particular use or application. Inslogic shall not be made liable for any damage, injury, or loss induced from the use of Inslogic materials in any particular application. Before using Inslogic material read properly all the details in the available safety data sheet (SDS).