



# Product Specifications

## 4K Multi Media Player

### HD-A8

V1.0 20210407

## 1. Product description

HD-A8 is a Multi Media Player that can remotely control and independently play videos, pictures, texts, clocks, animated characters, weather forecasts and other content. It has 16GB storage space onboard and needs to cooperate with a video controller to control the program playback on the LED screen.

HD-A8 supports synchronous and asynchronous free switching playback. Users can set three ways to change the playback mode: manual switching, automatic switching and timing switching

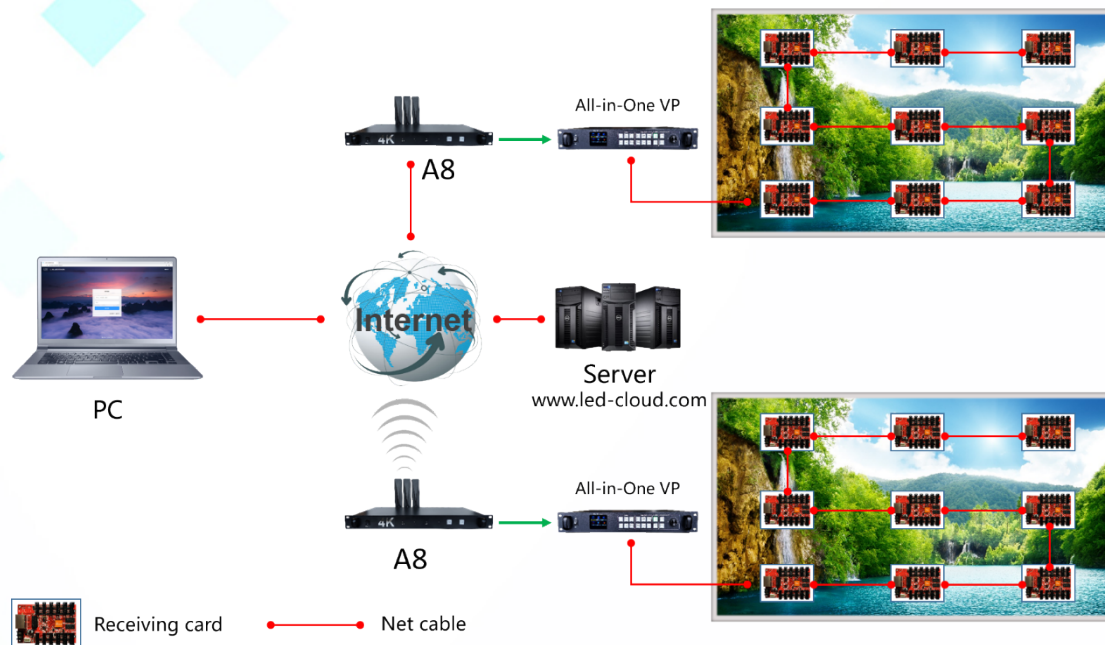
HD-A8 controlling is divided into 4 parts: HD-A8 player, video processor, receiving cards, control software HDPlayer.

### Configuration list

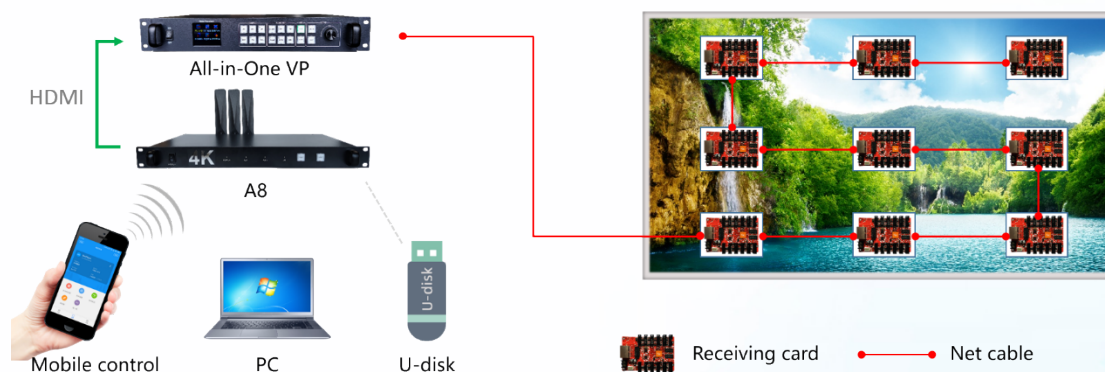
Product name	Model	Features
<b>4K Player</b>	HD-A8	Program storage/play, storage function
<b>Video controller</b>	HD-VP series	Process the A8 video signal and send it to the receiving card
<b>Receiver</b>	HD-R series	Connect the display screen and the controller, and display the program on the LED screen
<b>Software</b>	HDPlayer(PC) Ledart(App) Cloud	Parameter setting, editing program, sending program, etc.
<b>Accessories</b>		Antenna, network cable, HDMI cable, etc.

## 2. System connection diagram

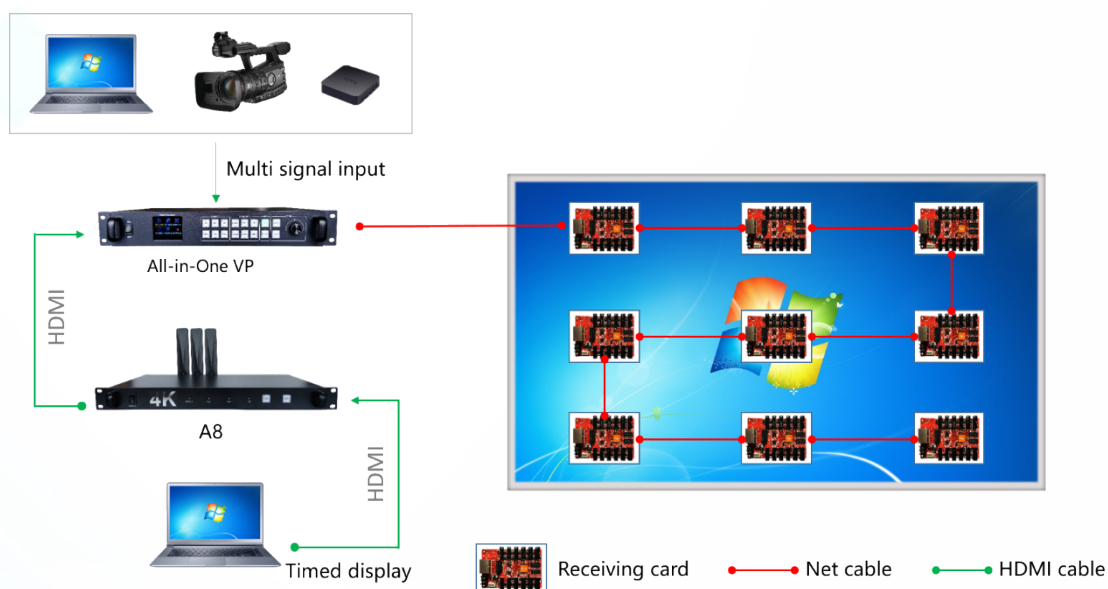
1. Cloud control: The Player can access the Internet through 3G/4G (optional), LAN connection, and Wi-Fi connection.



2. Asynchronous control: update programs through network cable connection, Wi-Fi connection and U disk. LAN Control support network cable connection and Wi-Fi bridge connection.



3. Live synchronization display: The synchronization source transmits the video signal to the player through the HDMI cable for synchronized or directly connects the synchronization source to the all-in-one controller to achieve multi-signal switching playback.



### 3. Product Features

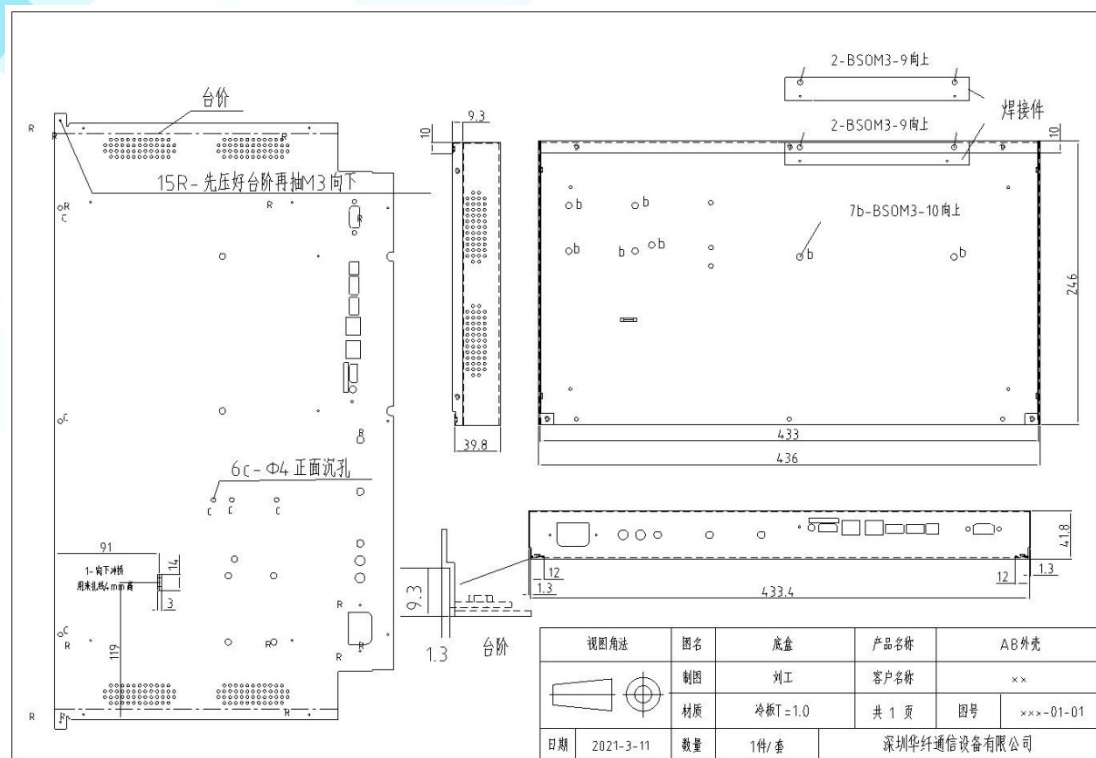
- Support 4K Video;
- 16GB storage, support U disk expansion and insertion;
- HDMI HD video input/output;
- Support HD video hard decoding, 60Hz frame rate output;
- No complicated network settings, automatic device identification, easy operation;
- Support LAN or Internet Cloud control; support 5G wireless control(Optional);
- Support Wi-Fi control for PC and Mobile phone;
- Support Audio Output (3.5mm standard audio output interface);



## 4. System function list

<b>Loading capacity</b>	4K (3840*2160)
<b>Play function</b>	Support video, picture, Gif animation, text, office document, clock, timing and other files; Support external remote control, temperature, humidity, brightness, noise, PM value, GPS and other extended functions;
<b>Video format</b>	Support HD video hard decoding, 60Hz frame rate output; Supports all common formats such as AVI, WMV, RMVB, MP4, 3GP, ASF, MPG, FLV, F4V, MKV, MOV, DAT, VOB, TRP, TS, WEBM, etc.
<b>Image Format</b>	Support BMP, GIF, JPG, JPEG, PNG, PBM, PGM, PPM, XPM, XBM, etc.
<b>Text</b>	Support single-line text, multi-line text, and the insertion of pictures, as well as direct import of word, txt, rtf, html and other texts
<b>Documentation</b>	Supports Office document formats such as DOC, DOCX, XLSX, XLS, PPT, PPTX, etc.
<b>clock</b>	Support analog clock, digital clock and multiple dial clock functions
<b>Audio</b>	HDMI audio input, two-channel stereo output
<b>storage capacity</b>	16GB storage, while supporting U disk expansion
<b>Communication</b>	Network port, U disk, Wi-Fi, 4G/5G (optional), HDMI synchronization
<b>interface</b>	Input: AC 100~240V, DC 12V, USB*2, RJ45*1, RS232*1, HDMI*1, Sensor*2 Output: HDMI*1, dual-channel AUDIO
<b>Working power</b>	18W

## 5. Size description



## 6. Interface Description



1. HDMI output: video signal output interface, connected with the video controller signal input interface;
2. Power interface: connect to 12V DC power supply;

3. USB interface: U disk insertion or expansion;
4. USB interface: U disk insertion or expansion;
5. LAN interface: networking, LAN control or PC direct connection to send programs;
6. **RS232 interface: serial communication and control;**
7. SIM card slot: insert 4G/5G card for networking;
8. Audio interface: 3.5mm dual-channel audio output interface;
9. Reset button: restore factory settings;
10. HDMI input: video signal input, which can be connected to computer, TV box and other media box, and synchronized playback
11. 5G Wi-Fi antenna interface: connect to Wi-Fi antenna;
12. 2.4G Wi-Fi antenna network port: connect to Wi-Fi antenna;
13. 4G/5G antenna interface: connect 4G/5G antenna;
14. Sensor interface: the interface for connecting various sensors, such as environmental monitoring equipment, multi-function sensors, etc.;
15. AC power interface: external 100~240V AC power supply, choose one of 2 DC power supply;
16. Synchronous/asynchronous mode switching button: a button to manually switch between synchronous playback or asynchronous playback;
17. Test button: used to test the screen, aging, etc.
18. 5G indicator light: used for 5G working status,
19. Wi-Fi indicator light: used to display Wi-Fi working status;
20. Running indicator: used to display the running status of the play box;
21. Power indicator: used to display power supply indication;
22. Power switch: control the on and off of AC power.

## 7. Basic parameters

	Minimum	Typical value	Max
<b>Rated voltage (V)</b>	11.2	12.0	12.5
<b>Storage temperature (°C)</b>	-40	25	105

<b>Working environment temperature (°C)</b>	-40	25	80
<b>Working environment humidity (%)</b>	0.0	30	95
<b>Product net weight (kg)</b>			
<b>Certification</b>			

Note: To ensure the long-term stable operation of the system, please try to use a standard 12V adapter for power supply.