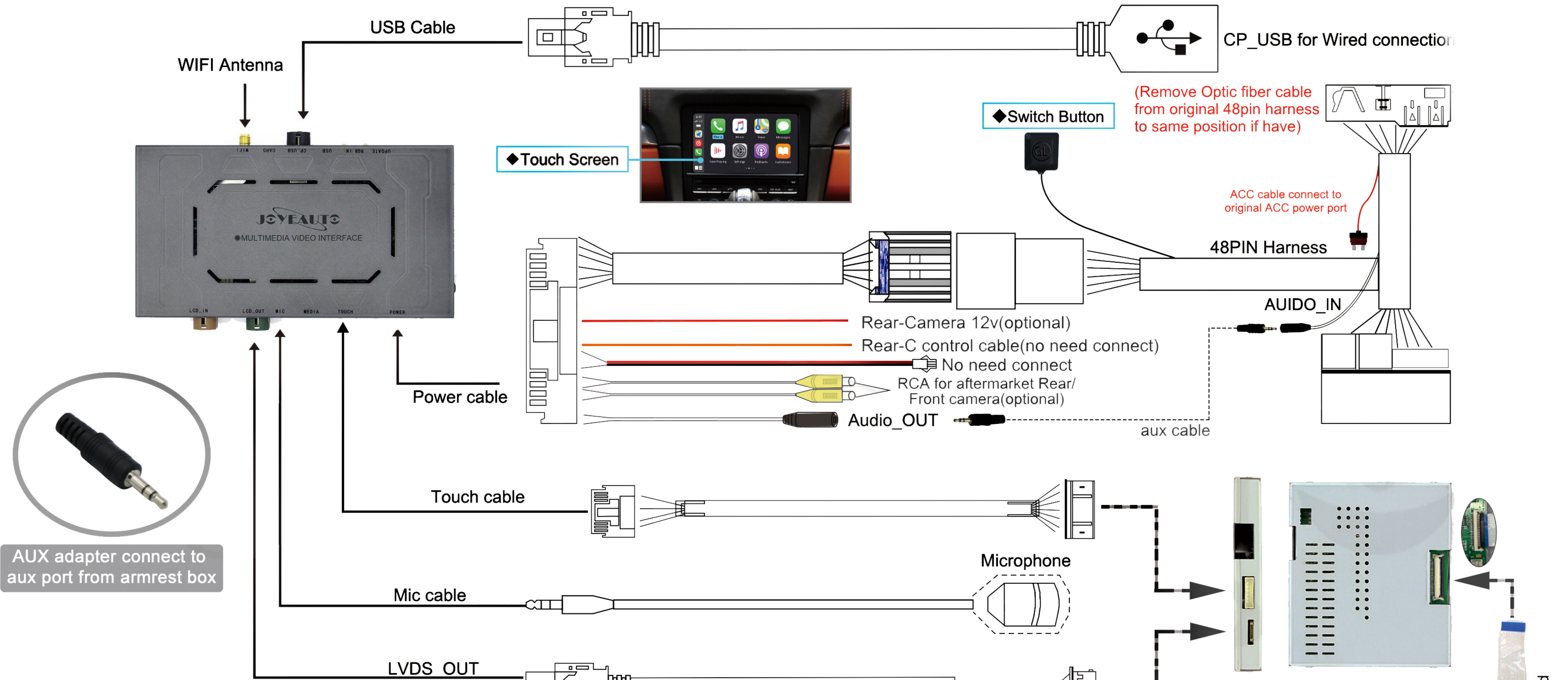


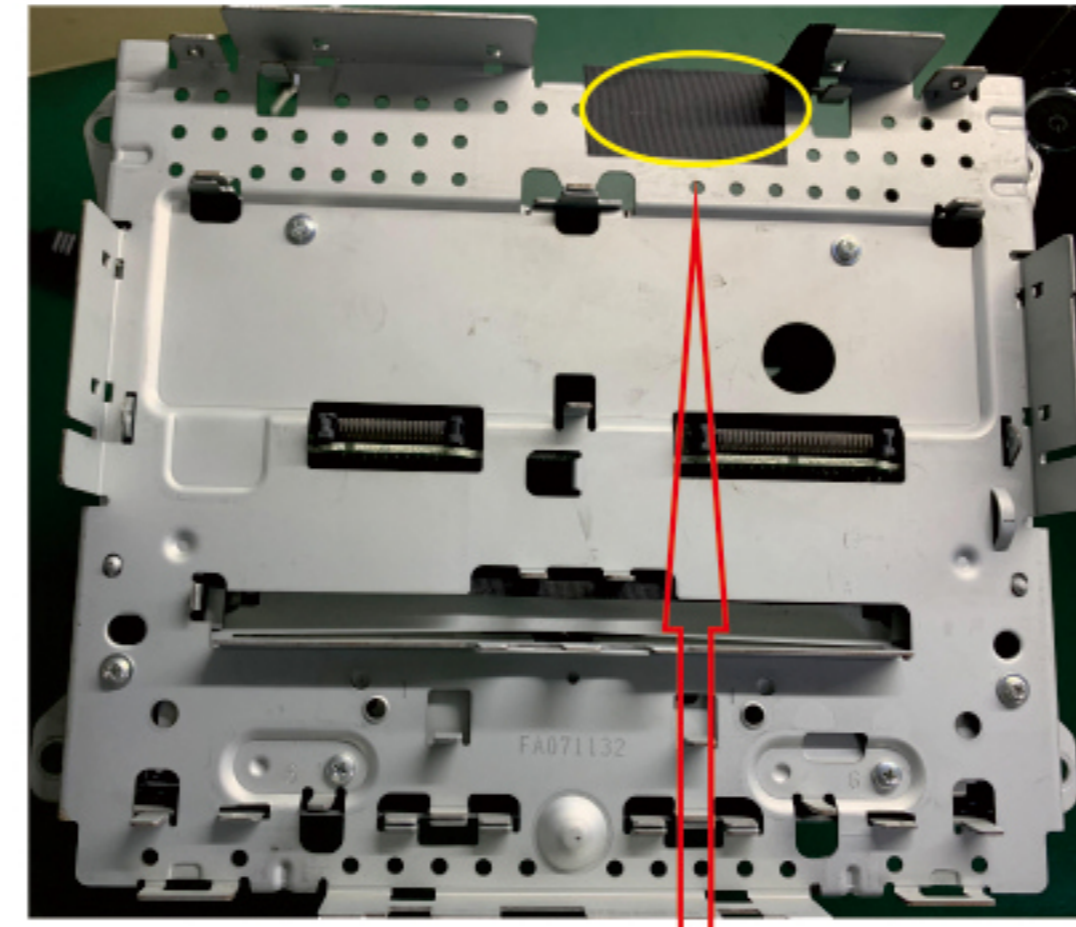
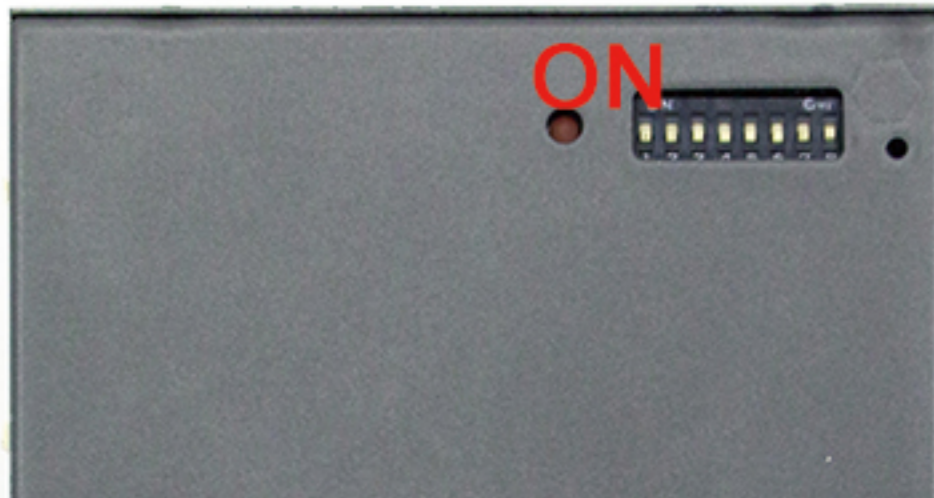
# Porsche CDR31 Wireless CarPlay Installation Diagram



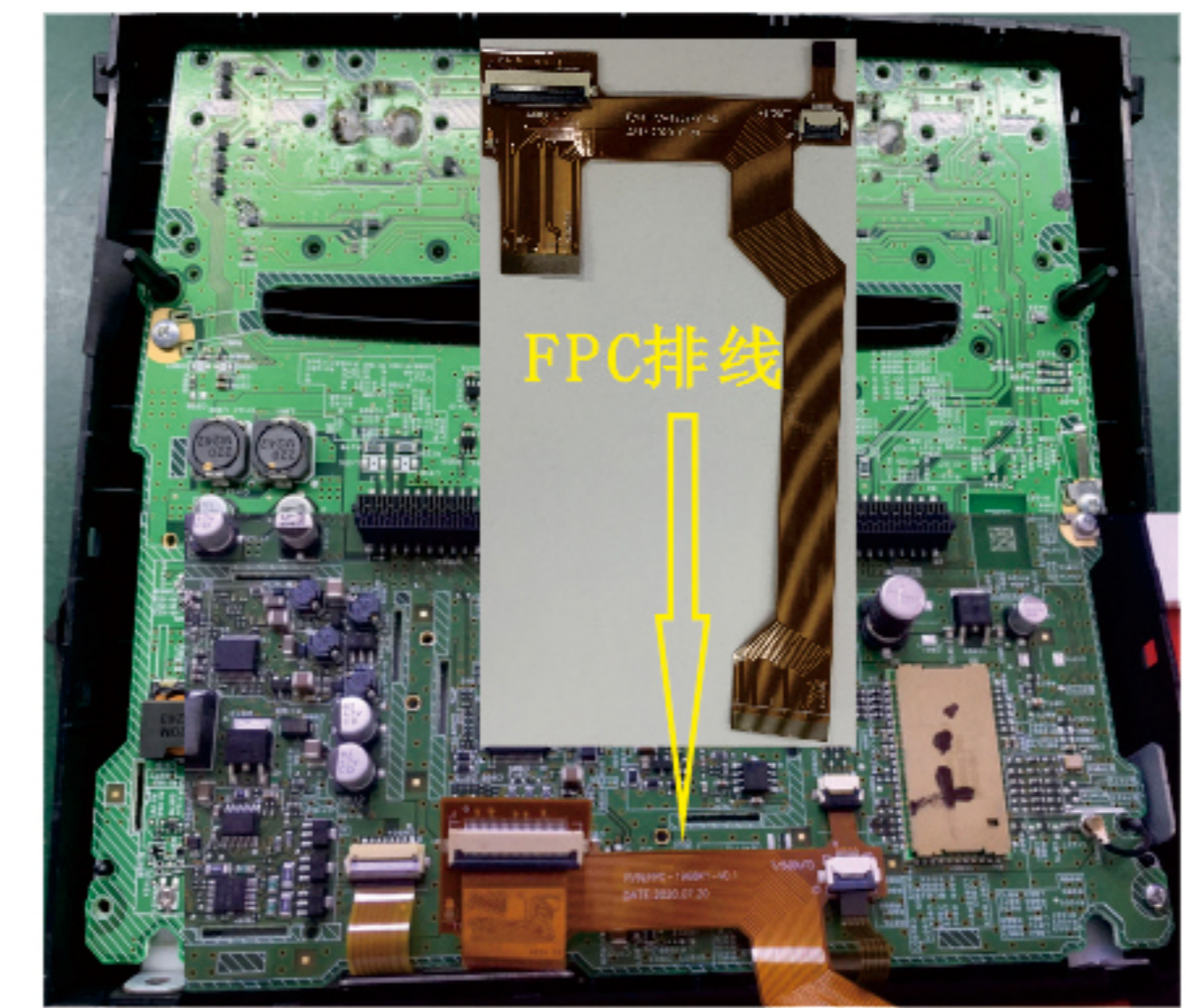
AUX adapter connect to aux port from armrest box

Dip Switch	Status	Description
1	ON	For CDR 31
	OFF	No Function
2	ON	Touch Screen callibration
	OFF	Off After Callibration
4	ON	Reverse guideline OFF
	OFF	Reverse guideline ON
8	ON	Original Rear Camera
	OFF	Aftermarket Rear Camera

3, 5,6, 7 all set OFF.



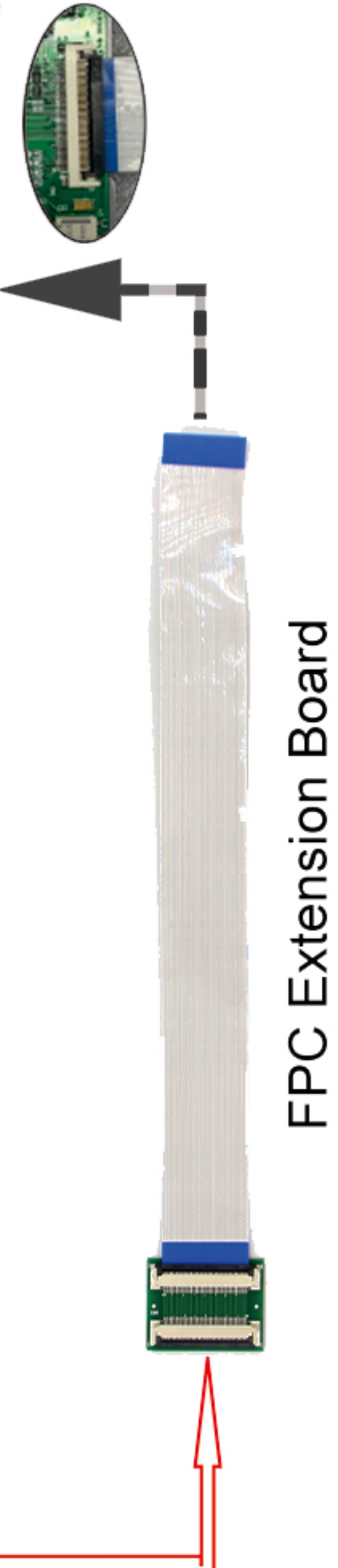
1. Separate the main unit from the panel and remove factory FPC as indicated.



2. Insert the FPC board we provide in the specified areas. Reinsert factory FPC boards into original slots. Make sure connections are flat to avoid shorting circuit.



FPC Flex Board



FPC Extension Board

3. Place an electrical tape to secure the connections, then insert FPC extension board.