

Video Interface for Renault/Opel/Smart Manual

DIP Switch Setting



※ ON : DOWN / OFF : UP

PIN	FUNCTION	Dip S/W SELECT
1	LVDS	OFF : LVDS MODE ON : LVDS MODE SKIP
2	HDMI1	OFF : HDMI1 MODE ON : HDMI1 MODE SKIP
3	AV1	OFF : AV1 MODE ON : AV1 MODE SKIP
4	AV2	OFF : AV2 MODE ON : AV2 MODE SKIP
5	FRONT CAMERA	OFF: EXT FRONT CAMERA ON: OEM FRONT CAMERA
6		N/C
7	REAR CAMERA SELECT	OFF : OEM REAR CAMERA MODE ON : EXT REAR CAMERA MODE
8		N/C

※ Please make sure to disconnect the power cable of the interface and reconnect the power cable again to apply the dip switch setting whenever changing DIP switch.

Remote Control Setting



Key	FUNCTION
POWER & PIP	N/C
MENU	Activating OSD menu
OK	Making a selection, changing image display
▲	Moving upward
▼	Moving downward
◀	Moving leftward (If you press this button 2 seconds long, you can access the factory mode)
▶	Moving rightward (If you press this button 2 seconds long, you can reset all the data about user environment)

Installation Guide

1



Please disassemble the monitor and disconnect OEM FFC cable as above.

2



Connect supplied FFC cable after disconnect OEM FFC cable.

3



Connect OEM FFC cable and another side of supplied FFC cable to supplied sub board.

4



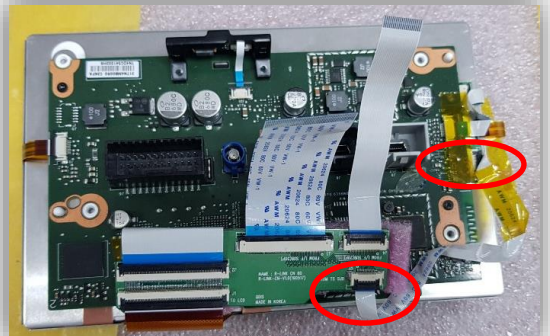
Disconnect OEM FFC cable and fix supplied sub board as above.

5



Connect OEM FFC cable to the middle socket of supplied sub board and connect supplied FFC cable from first socket of supplied sub board to OEM socket as above.

6



Connect supplied FFC from third socket of supplied sub board to another supplied sub board as above.

7



Assemble OEM back cover and pull out another side of supplied FFC cable as above.

8



Please connect OEM FFC cable to OEM PCB and supplied FFC to OEM PCB