

NBT 安装方法/ Installation steps



- ⑥ 将屏幕拔出的LVDS线接入主机LVDS IN ⑦ 对接原车上拆下来的线
- ④ 将USB线引出到手套箱, 无需接线 ⑤ 不要将天线贴到金属上, 会干扰信号

- ⑥ Connect the unplugged LVDS cable from the screen to the host LVDS IN ⑦ Connect to OEM power plug
- ④ Lead the USB cable to the glove box and no need wiring
- ⑤ Don't attach the antenna to the metal, it will interfere with the signal

◆ 装好复位前:请务必测试电话功能、倒车影像与音乐多媒体功能
Before installing and resetting: please be sure to test the phone function, reversing image and music multimedia function

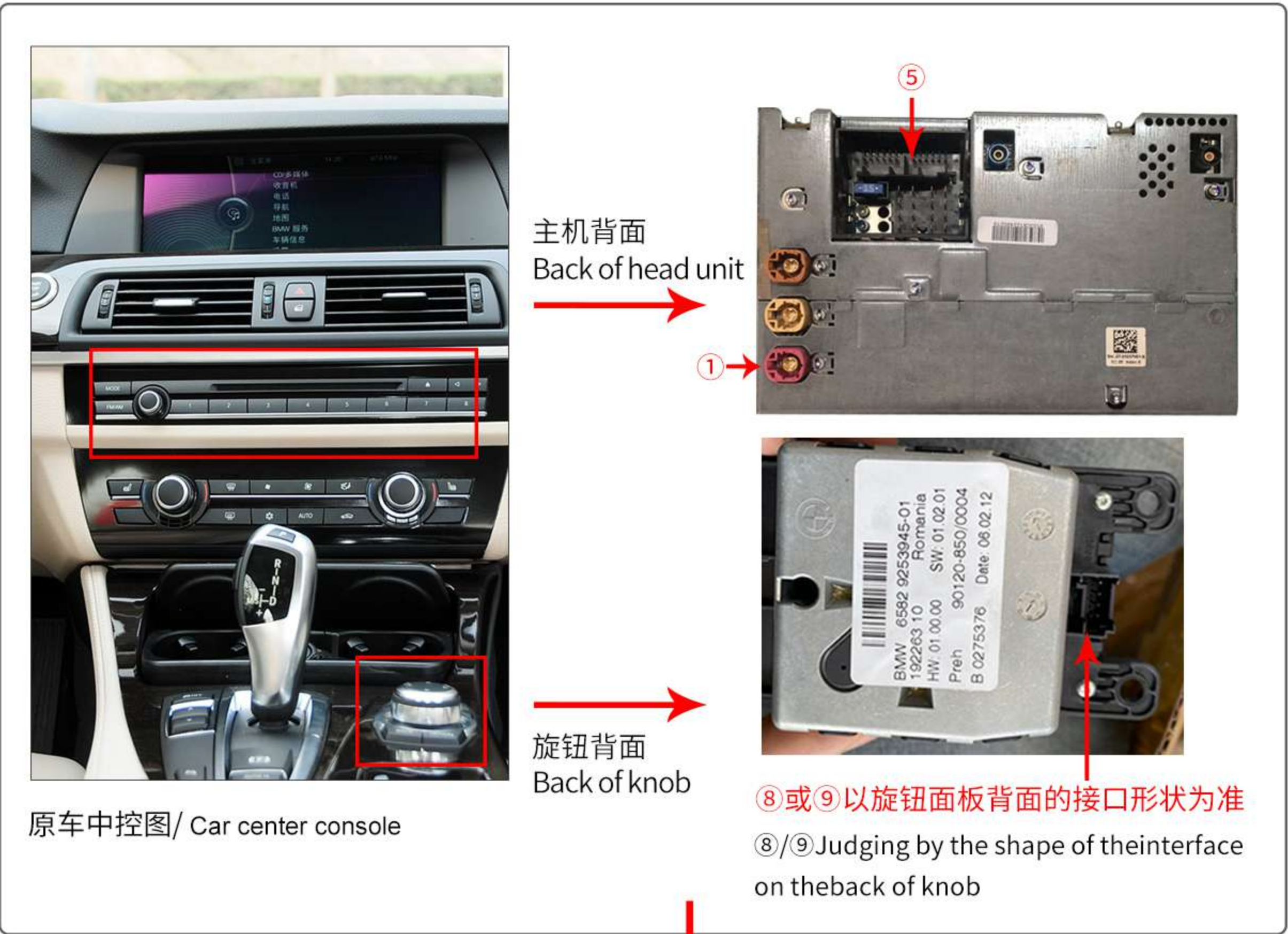
EVO 安装方法/ Installation steps



声卡安装/USB-AUX Adapter

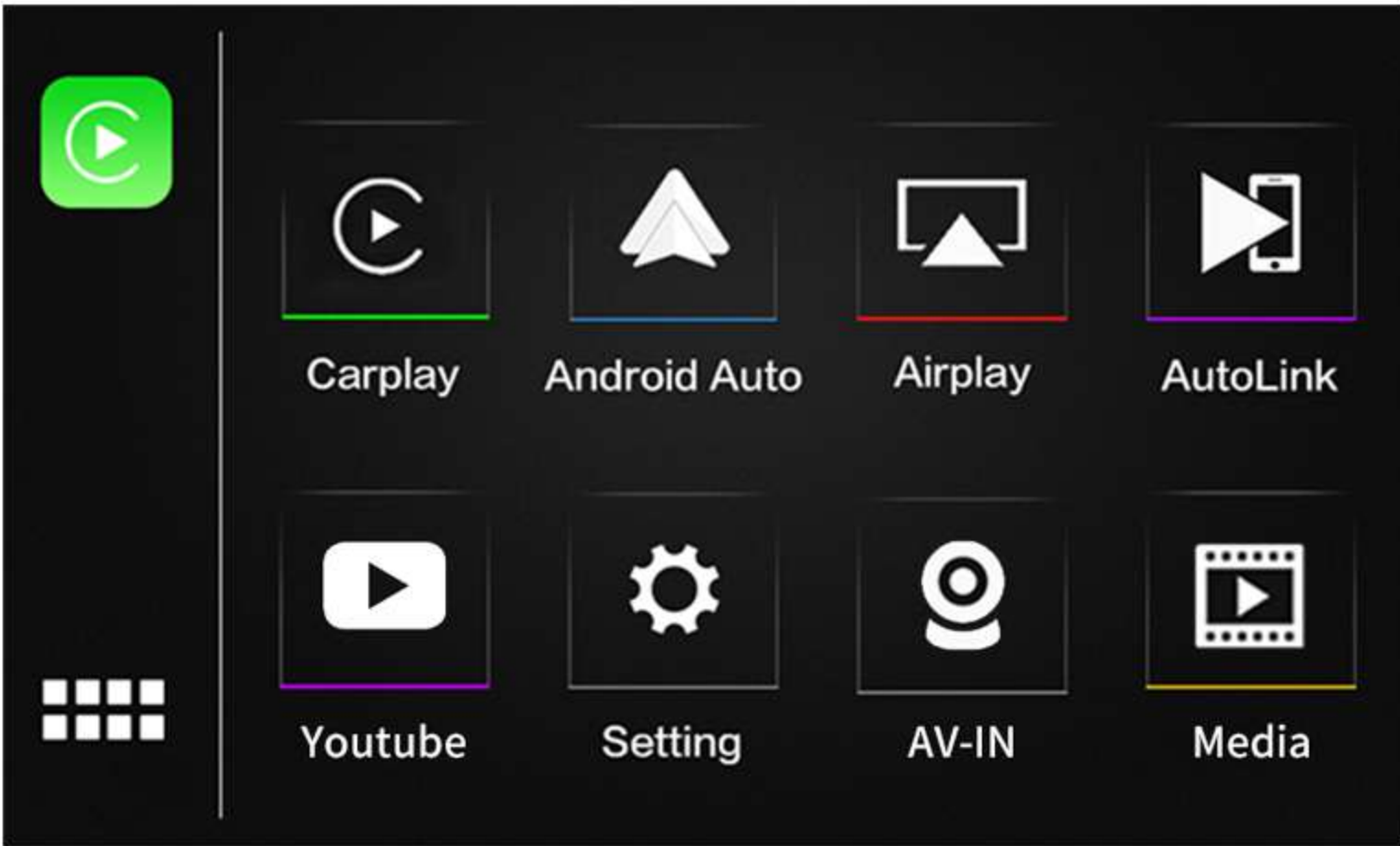



CIC 安装方法/ Installation steps




注: 若原车不带麦克风, 需要在Can线的MIC口插入麦克风产品
Note: If the car does not have OEM microphone, you need to install an aftermarket microphone.

NBT/EVO/CIC 功能说明/ Function Description



 苹果手机使用Carplay系统/ iPhone Enter CarPlay System
支持有线或无线连接,可实现导航、电话、siri、音乐等功能。

Support wired or wireless connection, can achieve navigation, telephone, siri, music and other functions.

 安卓手机使用Carlife系统/ Android Phone Enter Carlife System
通过数据线连接,可实现导航、电话、音乐等功能。

Through the USB connection, can realize navigation, telephone, music and other functions

 国外安卓手机使用Android Auto，实现地图、语音等功能
Android phones from abroad use Android Auto, to achieve map, voice control functions.


 苹果手机无线投屏/ iPhone Wireless Mirroring
同步手机画面，支持各类APP,可看视频、MV等。

Synchronous mobile phone screen, support all kinds of APP, can watch video, MV and so on.

 安卓手机有线投屏/ Wired USB Android phone Mirroring
同步手机画面，支持各类APP,可看视频、MV等。

Synchronous mobile phone screen, support all kinds of APP, can watch video, MV and so on.

 U盘影音播放
USB stick playback

 设置菜单/ Setting menu

 前置/后视摄像头
Front /Reverse camera

 Youtube

按键说明 Buttons Description

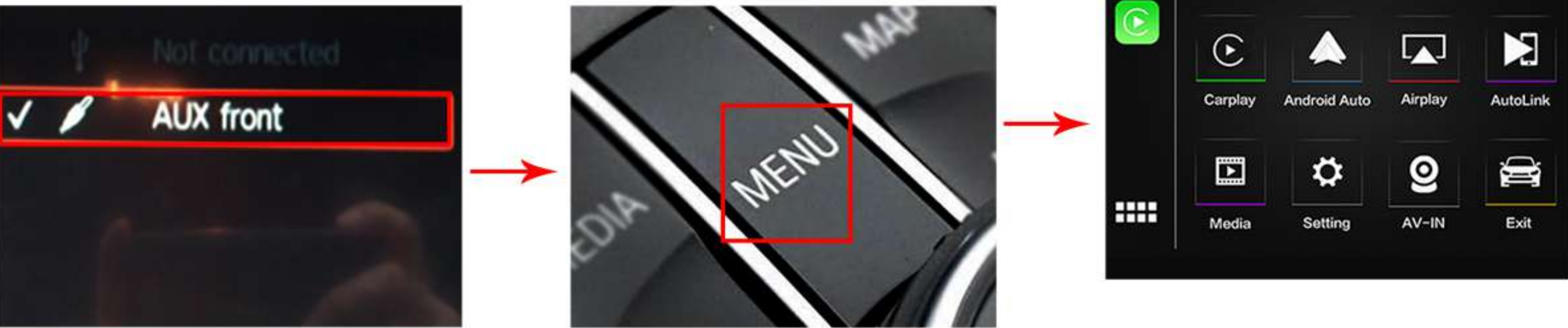


1. 长按3秒调出Siri
2. 切换键：切换原车系统和CarPlay系统
3. 旋钮键：与原车操作相同
4. 方向盘滚轮，在Carplay界面为上下功能，按下为选中
5. 返回键：短按返回，长按退出当前系统



1. Press & hold for 3 seconds to wake up Siri
2. Knob button: Same operation as the original car
3. Press Option to start the sound
4. This operation in CarPlay is up and down , push it to select
5. Back button: Short press to return. Press & Hold it to quit the system

进入系统/ Enter the system



如图上所示，原车菜单需选到AUX,按MENU键4秒即可切换到CarPlay界面
Shown on the picture, needs to select AUX first in Media source menu, then hold the “ MENU” button for 4 seconds to switch to the CarPlay interface.

加装倒车影像/ Install reversing image



拨码说明/ Switches description

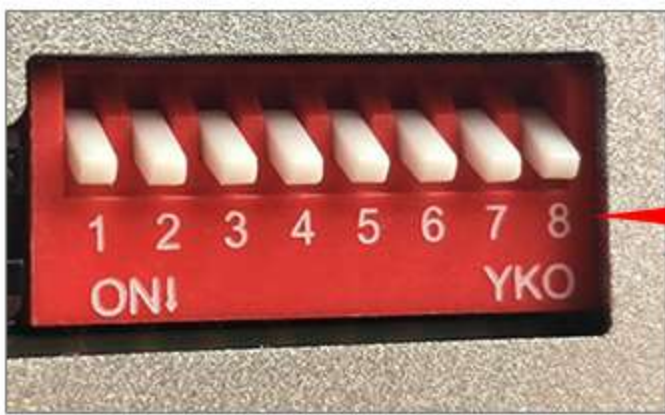


拨码7：车带麦克风OFF，加装麦克风ON
Switch code 7: OEM Microphone to OFF, Aftermarket Microphone to ON

| NBT/EVO | 年份/Year | OFF▲ | ON▼ |
|---|---------|-------|-----|
| 1-5系/Series X3/MINI (6.5") | 13-16 | 34568 | 12 |
| X1 (6.5") | 13-17 | 34568 | 12 |
| 1-7系/Series X1/X3/X5/X6 MINI (8.8")/(10.2") | 13-16 | 4568 | 123 |

注：根据车型和条件按照以上表格对应拨码，也可参照盒子背标拨码即可

Note: Different car models please refer to the diagram on the decoder box or in user manual to set switches codes .

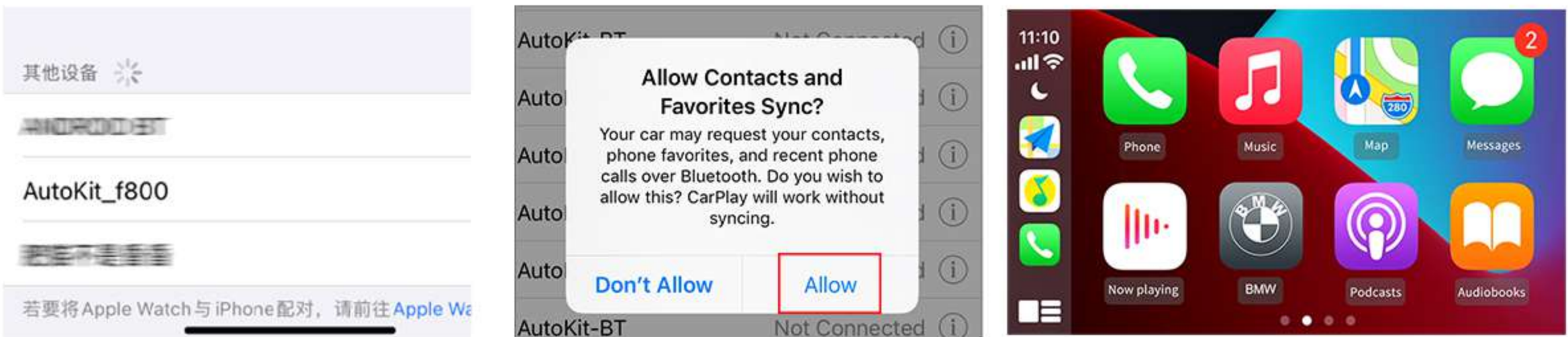


| CIC | OFF▲ | ON▼ |
|-------------|--------|-----|
| 6.5" | 123568 | 4 |
| 8.8"/10.25" | 12568 | 34 |

拨码7：车带麦克风OFF，加装麦克风ON

Switch code 7: OEM Microphone to OFF, Aftermarket Microphone to ON

无线CarPlay连接说明 Wireless CarPlay Description



1. 关闭原车蓝牙。
2. 打开手机Wifi和蓝牙,在蓝牙界面搜索设备，点击产品蓝牙名称(通常以AutoKit为开头)，选择使用CarPlay车载，等待2-3S即可连接成功。

1. Turn off the Bluetooth of the original car.
2. Open the mobile phone Wifi and Bluetooth, search for the device on the Bluetooth interface, and click the product Bluetooth name (usually starting with AutoKit),Choose to use CarPlay and wait for 2-3S to connect successfully.