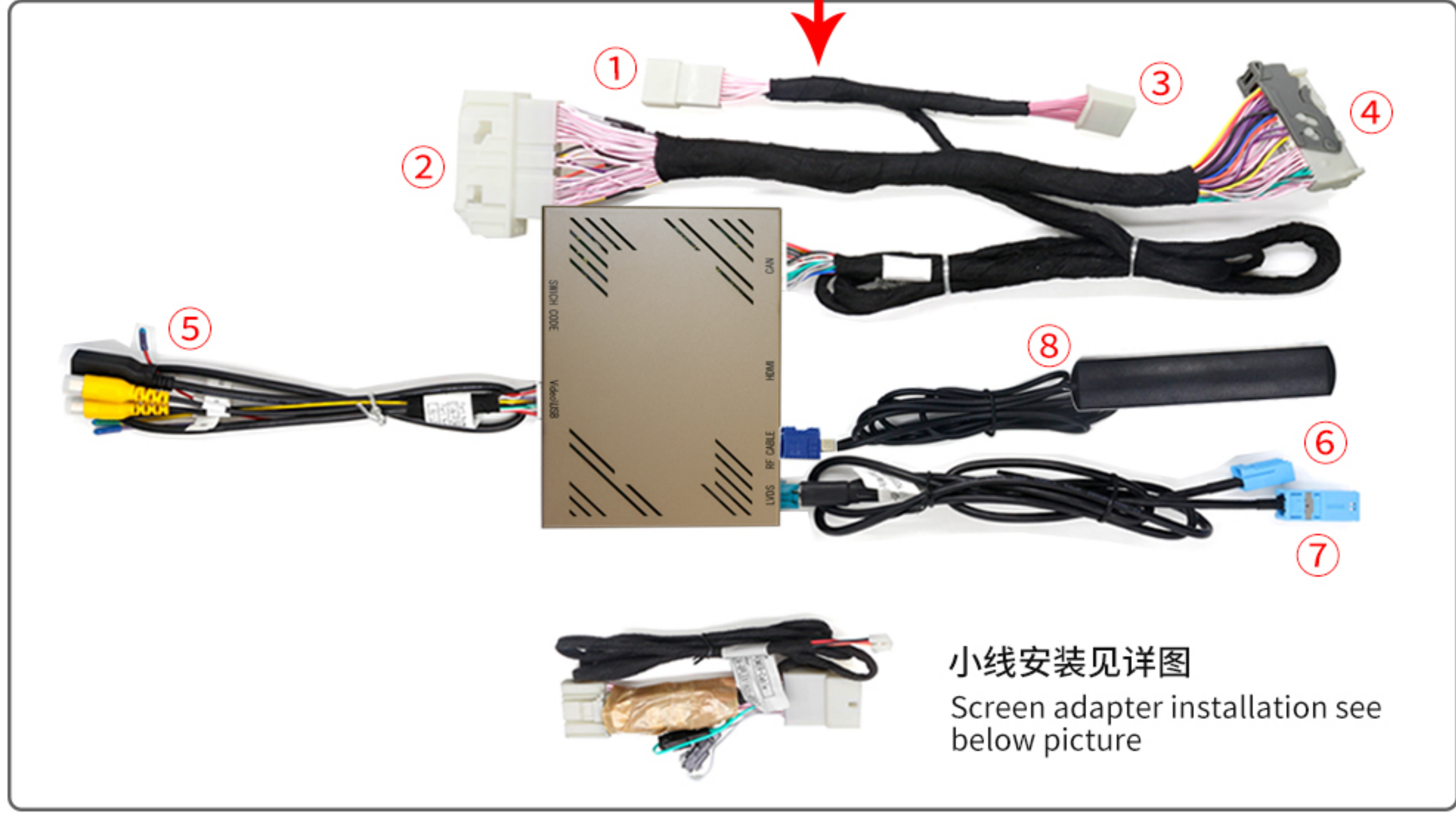


高配 安装方法/ Installation steps

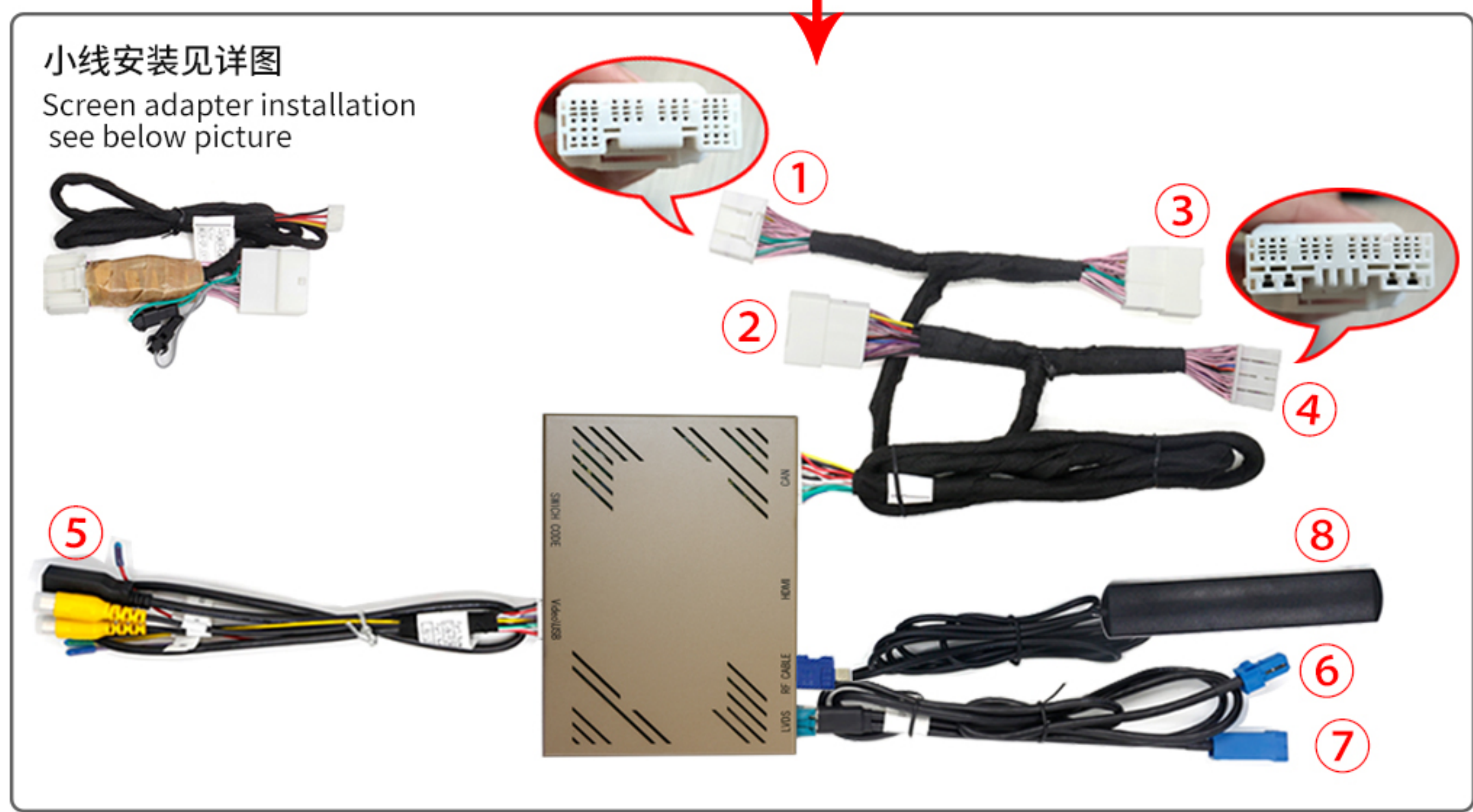
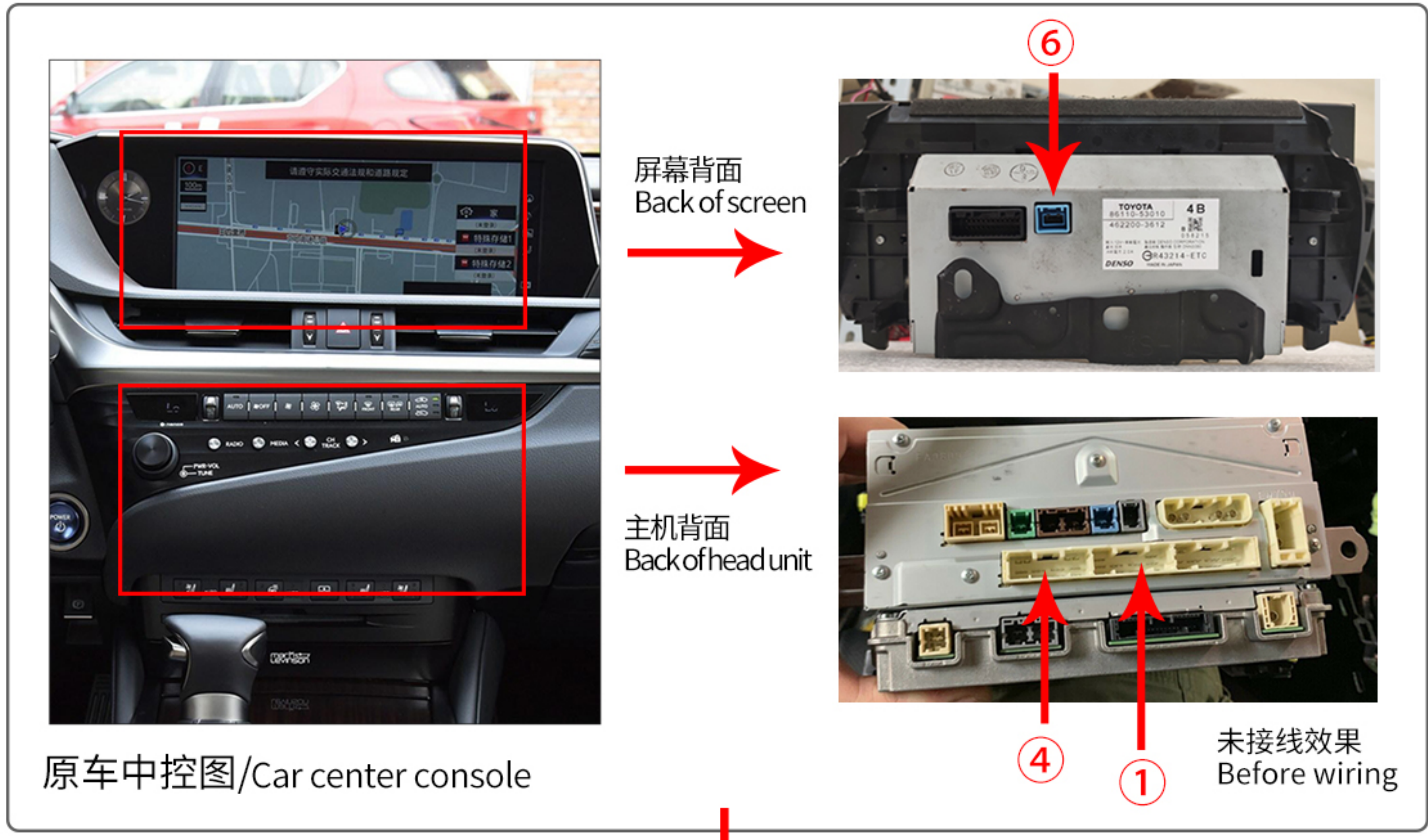


①②⑦对接原车上拆下来的线，⑤将USB线引出到手套箱，无需接线
⑧不要将天线贴到金属上，会干扰信号

①②⑦Connect to car OEM plugs ,
⑤ Lead the USB cable to the glove box and no need wiring
⑧Don't attach the antenna to the metal, it will interfere with the signal

◆ 装好复位前:请务必测试电话功能、倒车影像与音乐多媒体功能
Before installing and resetting: please be sure to test the phone function,
reversing image and music multimedia function

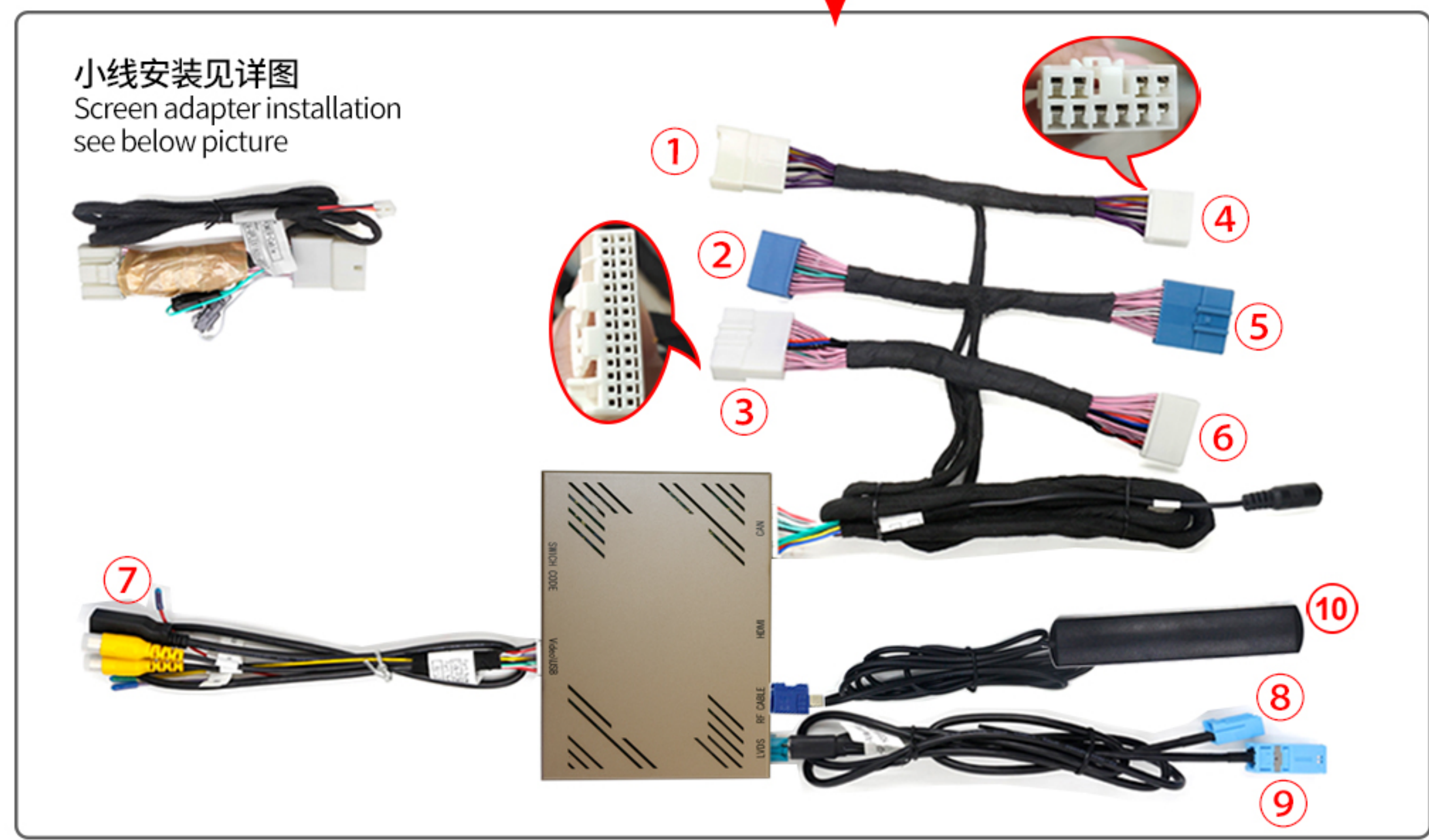
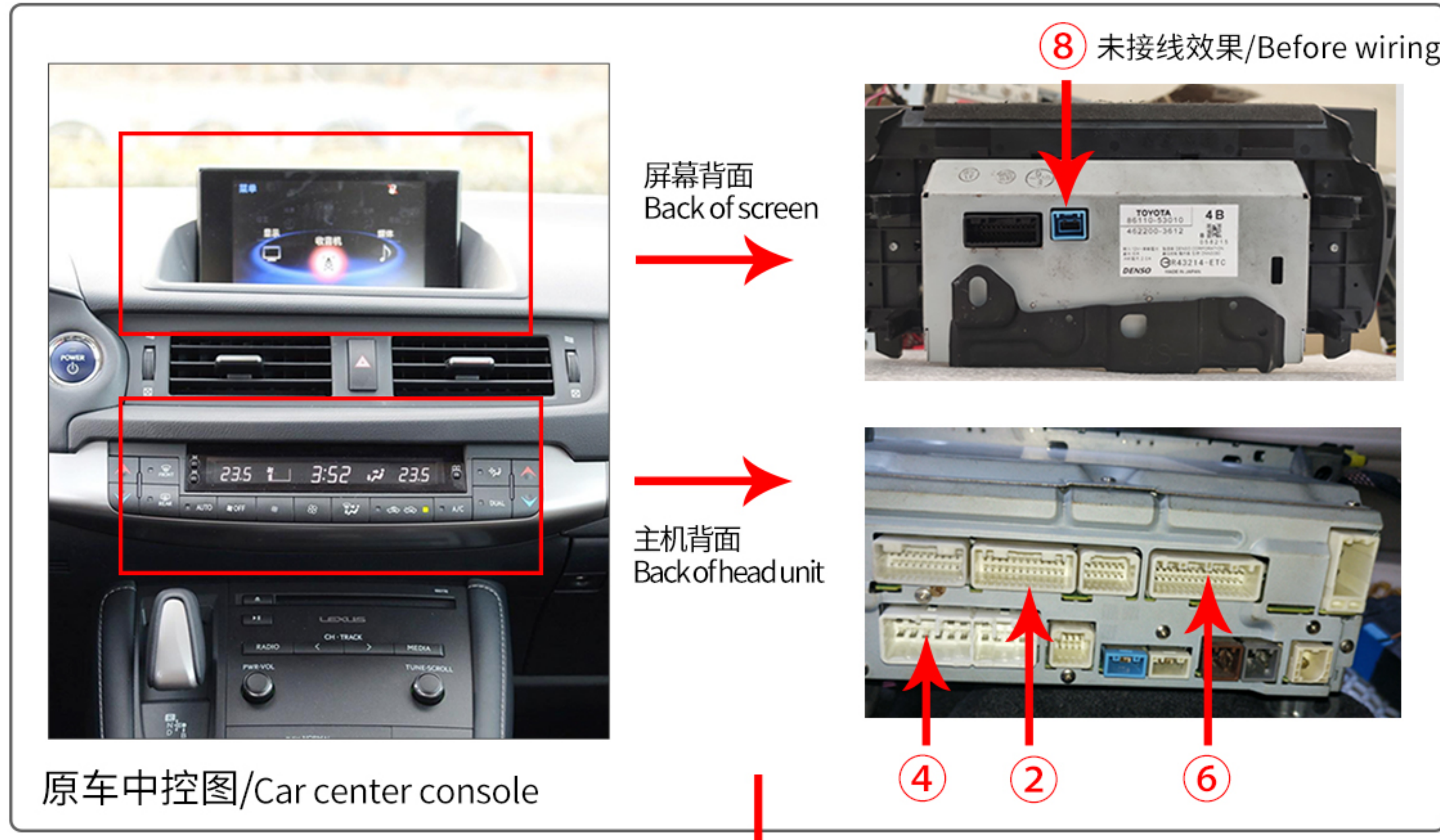
新款 安装方法/ Installation steps



②③⑦对接原车上拆下来的线，⑤将USB线引出到手套箱，无需接线
⑧不要将天线贴到金属上，会干扰信号

②③⑦ Connect to car OEM plugs ,
⑤ Lead the USB cable to the glove box and no need wiring
⑧Don't attach the antenna to the metal, it will interfere with the signal

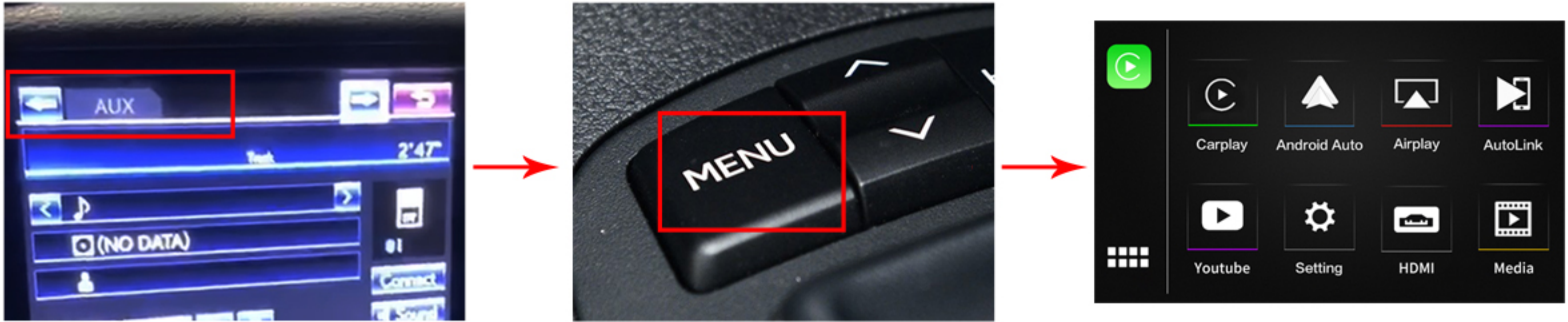
老款 安装方法/ Installation steps



①③⑤⑨对接原车上拆下来的线，⑦将USB线引出到手套箱，无需接线
⑩不要将天线贴到金属上，会干扰信号

①⑤⑥⑨Connect to car OEM plugs ,
⑦ Lead the USB cable to the glove box and no need wiring
⑩Don't attach the antenna to the metal, it will interfere with the signal

LEX 功能说明/Function Description



如上图所示，原车菜单需选到AUX,按MENU键4秒即可切换到CarPlay界面

As shown above, needs to select AUX first in Media source menu, then hold the “MENU” button for 4 seconds to switch to the CarPlay interface.

苹果手机使用Carplay系统/ iPhone Enter CarPlay System

支持有线或无线连接,可实现导航、电话、siri、音乐等功能。

Support wired or wireless connection, can achieve navigation, telephone, siri, music and other functions.

安卓手机使用Carlife系统/ Android Phone Enter Carlife System

通过数据线连接,可实现导航、电话、音乐等功能。

Through the USB connection, can realize navigation, telephone, music and other functions

国外安卓手机使用Android Auto，实现地图、语音等功能

Android phones from abroad use Android Auto, to achieve map, voice control functions.

苹果手机无线投屏/ iPhone Wireless Mirroring

同步手机画面，支持各类APP,可看视频、MV等。

Synchronous mobile phone screen, support all kinds of APP, can watch video, MV and so on.

安卓手机有线投屏/ Wired USB Android phone Mirroring

同步手机画面，支持各类APP,可看视频、MV等。

Synchronous mobile phone screen, support all kinds of APP, can watch video, MV and so on.

U盘影音播放

USB stick playback

设置菜单/ Setting menu

Youtube

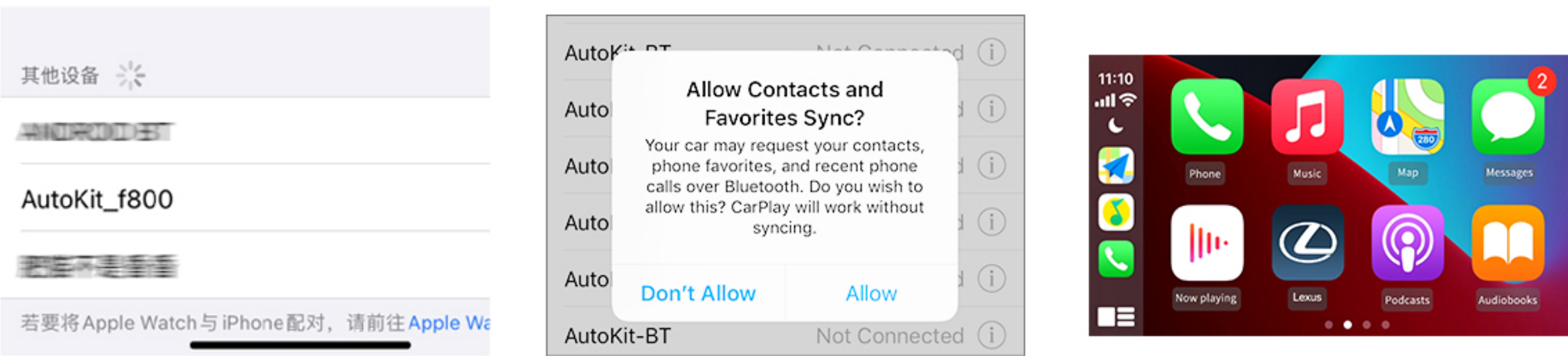
高清多媒体接口/HDMI



1. 切换键：切换原车系统和CarPlay系统 2. 返回键：短按返回
3. ③ 触摸屏 ④ 摇杆 ⑤ 旋钮：上下左右选择，控制 CarPlay菜单；轻点确认

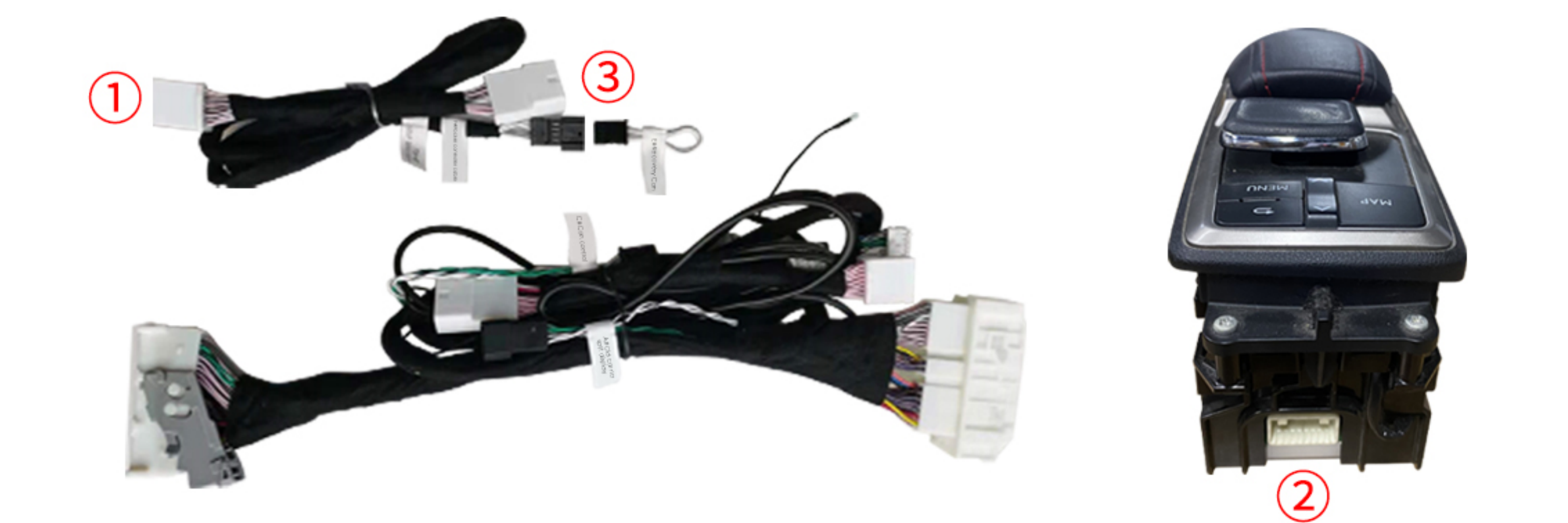
1. Switch button: Switch the car system and CarPlay system 2. Back button: Short press to return
3. ③ Touchpad ④ Joystick ⑤ Knob: select up, down, left, and right to control the CarPlay menu; tap to confirm

无线CarPlay连接说明 Wireless CarPlay Description



1. 关闭原车蓝牙。
2. 打开手机Wifi和蓝牙,在蓝牙界面搜索设备，点击产品蓝牙名称(通常以AutoKit为开头)，选择使用CarPlay车载，等待2-3S即可连接成功。
1. Turn off the Bluetooth of the original car.
2. Open the mobile phone Wifi and Bluetooth, search for the device on the Bluetooth interface, and click the product Bluetooth name (usually starting with AutoKit),Choose to use CarPlay and wait for 2-3S to connect successfully.

附加说明 Additional information



摇杆款如遇到CarPlay与原车联动问题，请将附加线中E#线与F#线拆开。把E#线接入Can中A#线，F#线接入Can线中C#线。将①接入②,把③接入摇杆拔下来的线材。

If you encounter problems with the linkage between CarPlay and the original car for the joystick model, please disconnect the E# line and F# line in the additional line. Connect the E# line to the A# line in the Can, and the F# line to the C# line in the Can line. Connect ① to ②, and connect ③ to the wire that has been unplugged from the joystick.

小线安装/ Screen adapter installation



拨码说明/ Switches description

车型/Model	年份/屏幕尺寸 Year/Screen size	OFF▲	ON▼
旋钮款 Knob button	13-15 老款/Old(7")	126	345
	(7"/8")	12346	5
	(12")	1246	35
	(10.3") /19-20 (12.3")	1236	45
触控款 Touchpad	13-15 老款/Old(7")	156	234
	(7"/8")	13456	2
	(12")	1456	23
	(10.3") /19-20 (12.3")	1356	24
摇杆款 Joystick	13-15 老款/Old(7")	16	2345
	(7"/8")	1346	25
	(12")	146	235
	(10.3") /19-20 (12.3")	136	245

车带麦克风 78 OFF,加装麦克风 78 ON

OEM Microphone 78 OFF,Aftermarket Microphone 78 ON

注：根据车型和条件按照以上表格对应拨码，也可参照盒子背标拨码即可

Note: Different car models please refer to the diagram on the decoder box or in user manual to set switches codes