

# Product Operation Instructions

Version 5.0



Carplay

Connect iPhone with the unit choose this icon you will enter CarPlay then you can use Phone Music Maps Siri....

Support iPhone : iPhone 5 and above,IOS 10 and above

Note:Please use factory iPhone cable or MFI certification iPhone cable.

Note:iPhone phone connection delays 6 seconds to automatically enter this mode



Android Auto

Connect android phone with the product,choose this icon you will enter Android auto then can use Google Music,google maps , Phone.

The phone function needs to connect to the car Bluetooth in the main menu "BT Setting"

Support Phone:Android Phone



IOS Mirror

Connect iPhone with the unit choose this icon you can enter AirPlay Mirroring then you can watch TV or Youtube on your car screen.

Support iPhone : all iPhone

Note:can mirror all the APP on your iPhone , can only control by the iPhone



Android Mirror

Connect android phone with the product,choose this icon you will enter android mirroring , and please open your USB Debugging

Note : Because of the android system , it can not transfer sound, if need sound please connect with your car Bluetooth or AUX to transfer,can mirror all the APPs on your phone,only control by phone.



EXTEND

Extend function



EXIT

Return to original car system



BT Setting

If you're using Android Auto, make sure that the car supports Bluetooth phone function,Follow the settings page to connect your phone to the car Bluetooth and select the connection (red)

Note: Only accept one mode to use at same time, eg. When you use Carplay and want use Airplay you must disconnect the CarPlay and then connect with iOS mirroring (just disconnect the iPhone cable)



# User Manual

For Audi

CarPlay function for Audi Car without MMI build-in player can use the USB to play.

LVDS output, make the connection more easy  
Don't need to break the original car cable,  
and make your car more smart.

## Installation



- Install Microphone
- Easy connection
- Support Reverse camera、360 view、Front camera
- Don't need to unpack the car screen.

## Parameter

Work Voltage : 10V-35V

Work Current : <1A

Work Tem : -20~80°C

Video input: Reverse cam, AV input

Video output : LVDS Digital signal

Power Output : 5V/1A

support@car-solutions.com

## Support Model

09 - 17 without MMI Q5

09 - 15 without MMI A4 A5 S5

## Key Description



Original car key description :

- ①Knob:knob function, press to confirm.
- ② Next track/Android Auto "Down"
- ③ Previous track/Android Auto "UP" " Search"
- ④Press to use SIRI,Answer / hang up the phone.  
Android Auto "Menu"
- ⑤Sound Source key : Press then switch to AUX to enter .
- ⑥Press to enter Map/Android Auto, Google Voice Assistant
- ⑦Back button : press to back/press for 3s to switch to front camera image.



- ⑧Voice : Press for 2s to use SIRI  
Android Auto Google Voice Assistant
- ⑨Up and down press to confirm
- ⑩NAV :Long press switch

Switch: 1. Press MEDIA then switch to AUX to enter  
2. Long press the NAVI to enter  
3.Plug with Phone to Switch

Note: The above functions may be different in some models.

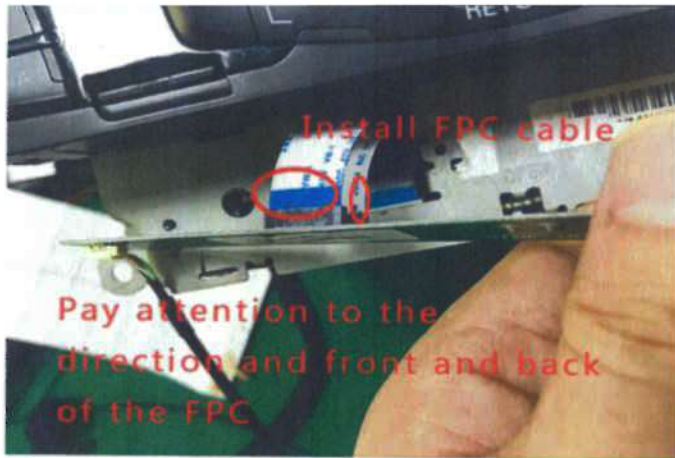
## Safety Note:

- 1.Please read the manual carefully.
- 2.Machine is without waterproof function
- 3.The pictures in the manual are for reference only.
- 4.Don't disassemble the product.
- 5.The company reserves the right to improve products, product specifications and the design is subject to change without notice.

**Disclaimer: The company is only responsible for the service and maintenance of the product, the product caused by the use of data and joint responsibility, the company does not assume any responsibility and obligation.**

car-solutions.com

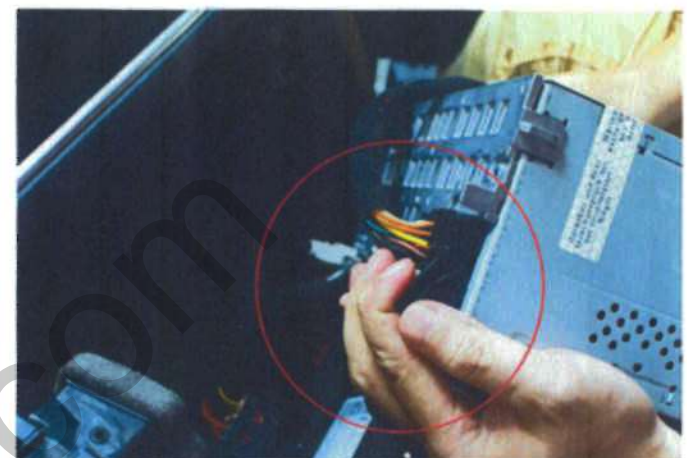




Install the FPC adapter board  
 Notes: Please disconnect after power supply



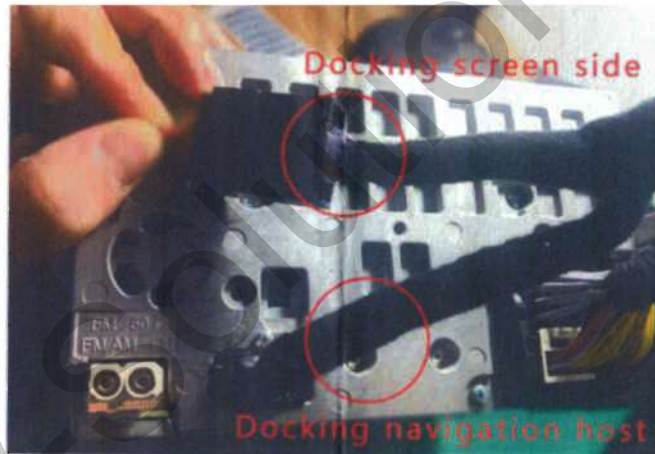
Fixing PCB board



Docking host power



Transfer air conditioner panel plug



Install the screen and power cord  
 (notes: that it is transmitted on the host)



Install MIC

Reversing installation: The video head is connected to "Rear CAM" power supply and "CAM OUT (purple line)" dial: OFF OFF

360 installation: video head connected to "Rear CAM" signal "TRIG (white line)" dial code: OFF ON

Front view and driving recorder: video head connected to "FRONT CAM" through the "AV IN" icon in the system interface