

Instruction Manual

CarPlay Integration for BMW NBT-EVO

Content:

● Warning	3
● Compatibility	5
● Features	6
● Package Components	7
● Connection Diagram	8
● DIP Setting	10
● Operation Instruction	11
■ How to switch from original to add-on interface	11
■ Apple CarPlay	12
■ Android Auto	13
■ Mirroring	14
■ USB Multimedia Playback	14

Warning:

- In order to protect the driving safety and avoid break the traffic law; please DO NOT operate the interface while driving.
- The reversing surveillance function just is used in reversing assistance. Please check the entire surroundings while reversing.
- All steps of installation should be done by the well-trained specialist.
- During installation, the ignition key should be taken off and after all installation finished, connect power cable last.
- Please DO NOT plug or pull the connected cables in the state of power-on, in order to avoid damaged monitor or accessory.
- Install wiring in a manner in which cables will not come in contact with metal parts. The wiring may be damaged by contact with metal parts, resulting in fire and shocks. Avoid all contact with hot surfaces when wiring the main unit. High temperatures may damage wiring, causing shorts, arcing and fires.
- Please DO NOT put the product in the damp environment or water, in order to avoid electric shock, damaged and fire accident caused by a short circuit.
- Kindly check all components are in the box when receiving the product. If anything missing, inform to the supplier/manufacturer.
- Start the engine before loading, check the interface whether have function displayed, key control whether correct, the vehicle

interface whether having a scratch. Please give the feedback to the supplier/manufacturer if there have any questions.

- Please note that put the disassembled automotive components in a good way on the installation process, avoid scratching the instrument panel, the leftovers of connecting cables need to handle and DO NOT leave it in the car. The connecting plug must be insulated in order to short circuit.
- The cables should be connected in a good way; the vehicle installation space is a little small, so reduce space usage as far as possible. There should be a good plan about connect cables, avoid affecting the active component of connecting, such as control components of turning the steering wheel, throttle and brake pedal. There need to be fastened after connecting cables in case of a drop.

Car-Solutions.com

Compatibility:

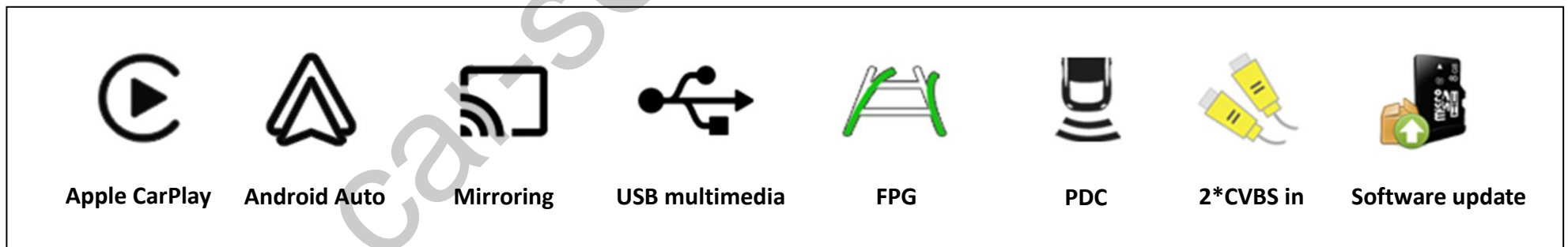
Brands	Class	Years	Original System
BMW	1 Series (F52)	2017 -	NBT-EVO system ID5 & ID6 with/without OEM touch screen 6.5/8.8/10.25 inch monitor 6 Pin LVDS connector
	2 Series (F22, F45)		
	3 Series (F30, F31)		
	4 Series (F32, F33)		
	5 Series (G30)		
	7 Series (G11, G12)		
	X1 (F48)		
	X3 (F25)		
	X4 (F26)		
	X5 (F15)		



NOTE! OEM monitors with and without a touch screen are supported. But OEM touch could not operate the add-on CarPlay integration, please use iDrive controller instead.

Features:

- Integrated 3 in 1 module supports Apple CarPlay, Android Auto, and screen mirroring functions
- Supports USB HD video and lossless music playback (APE, WAV, FLAC, MP3, WMA, etc.)
- Offers 2 CVBS in (1 CVBS video for reverse camera, 1 CVBS A/V in for front view camera or additional A/V devices)
- Support PDC (Parking Distance Control) and FPG (Flexible Parking Guidelines)
- Supply 12V power to the backup camera
- Display front view camera automatically when shifted from “R” gear (DIP setting)
- VGA input for specific 360 panoramic system, offers a clearer picture
- Operate by OEM iDrive controller & steering wheel buttons (OEM touch could not support)
- Support further software update



Package Components:



Main Unit

Dimension: 141*98*29 mm



Quadlock Main Power Cable



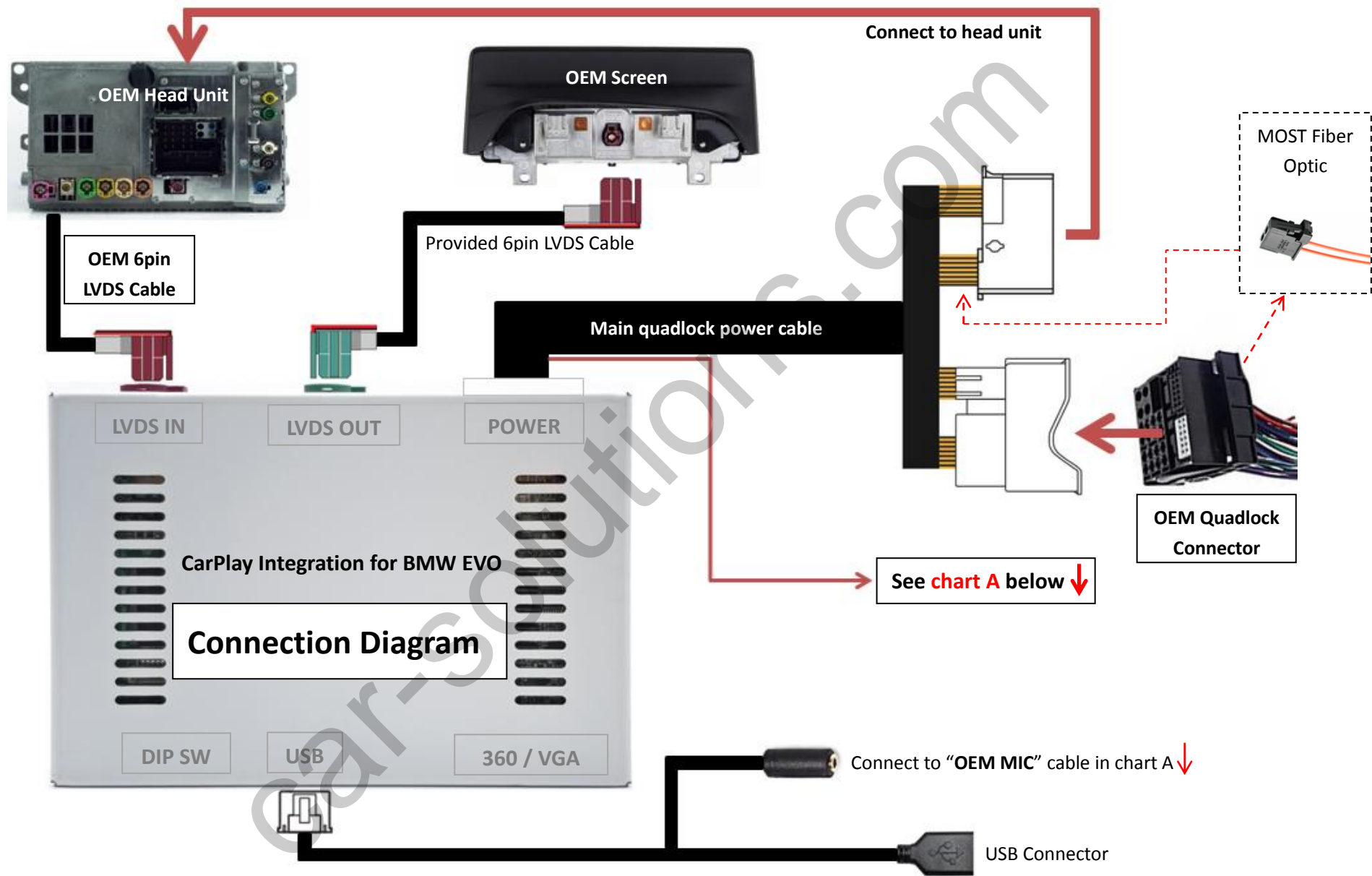
6 pin LVDS Cable



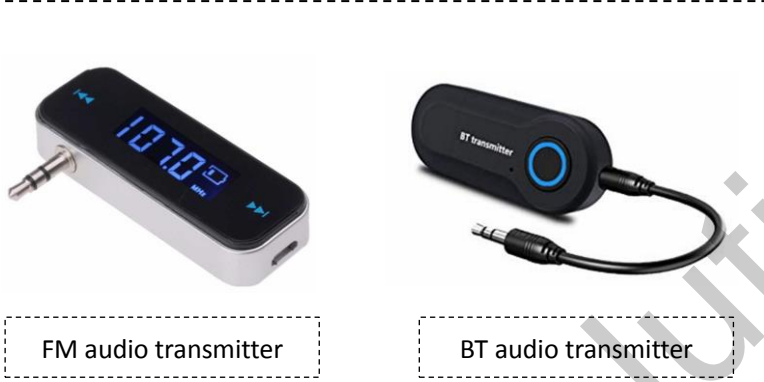
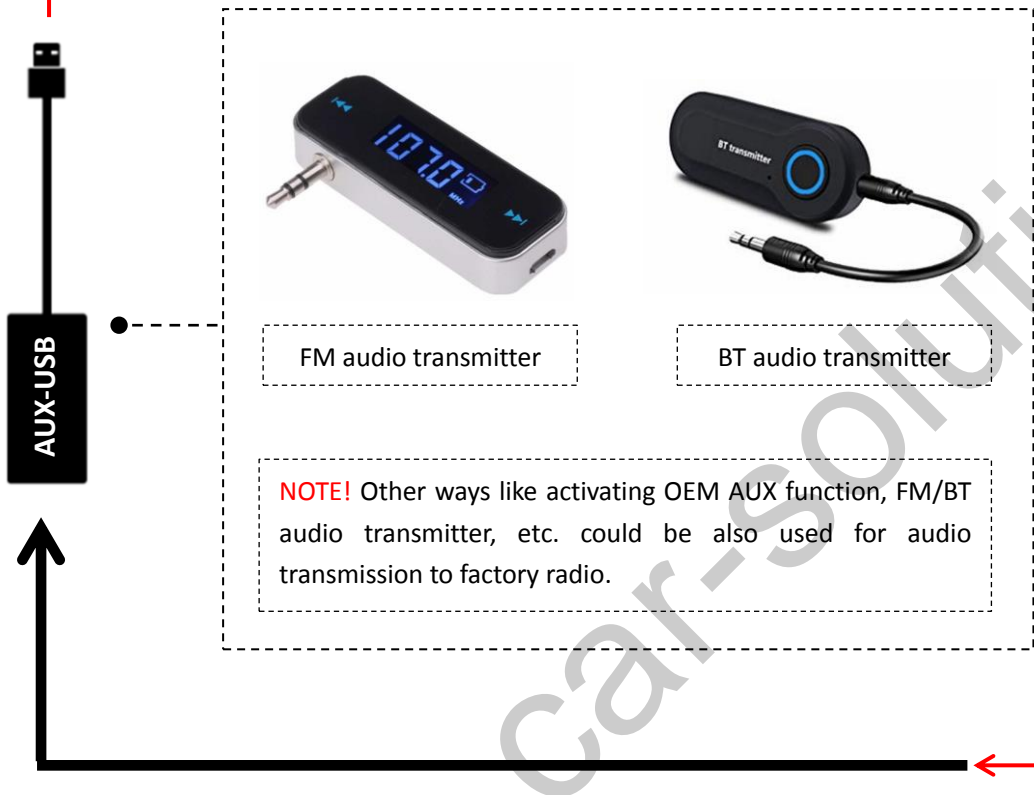
AUX-USB adapter



USB/MIC Cable



How to delivering audio to OEM radio



NOTE! Other ways like activating OEM AUX function, FM/BT audio transmitter, etc. could be also used for audio transmission to factory radio.

Chart A: ↓

	ACC	Supply power for front view camera
	IR OUT	IR signal output
	CAM_POWER	Supply 12V power for backup camera
	REVERSE	Reverse detect (Connect to reverse light if CAM_POWER cable does not output 12V)
	CAMERA	Rear view camera video input
	DTV	Audio & video input for external A/V sources like digital TV, screen mirroring adapter, front view camera, etc.
	DTV AUDIO R	
	DTV AUDIO L	
	DC 12V OUT	Supply DC 12V for external A/V device
	OEM MIC	Connect to provided USB/MIC cable
	AUX OUT	AUX audio output (Connect to AUX-USB adapter or other audio transmitters for audio delivering to OEM radio)

DIP Setting:



PIN	ON ↑	OFF ↓
1	CAN2	CAN1 (Default)
2	Disable Dynamic Parking Guideline	Enable Dynamic Parking Guideline
3	Display front view camera for 10S automatically after shifted from "R" gear	Skip front view (Enter "DVR" icon to view picture)
4	CVBS	VGA
5	Enable PDC (Parking Distance Control)	Disable PDC (Full screen rear view camera)
6	Selection of monitor size	
7		
8	Original Rear View Camera	Aftermarket Rear View Camera

6	7	Resolution & Size
ON ↑	ON ↑	1440*540 (10.25")
ON ↑	OFF ↓	1280*480 (8.8")
OFF ↓	OFF ↓	800*480 (6.5")

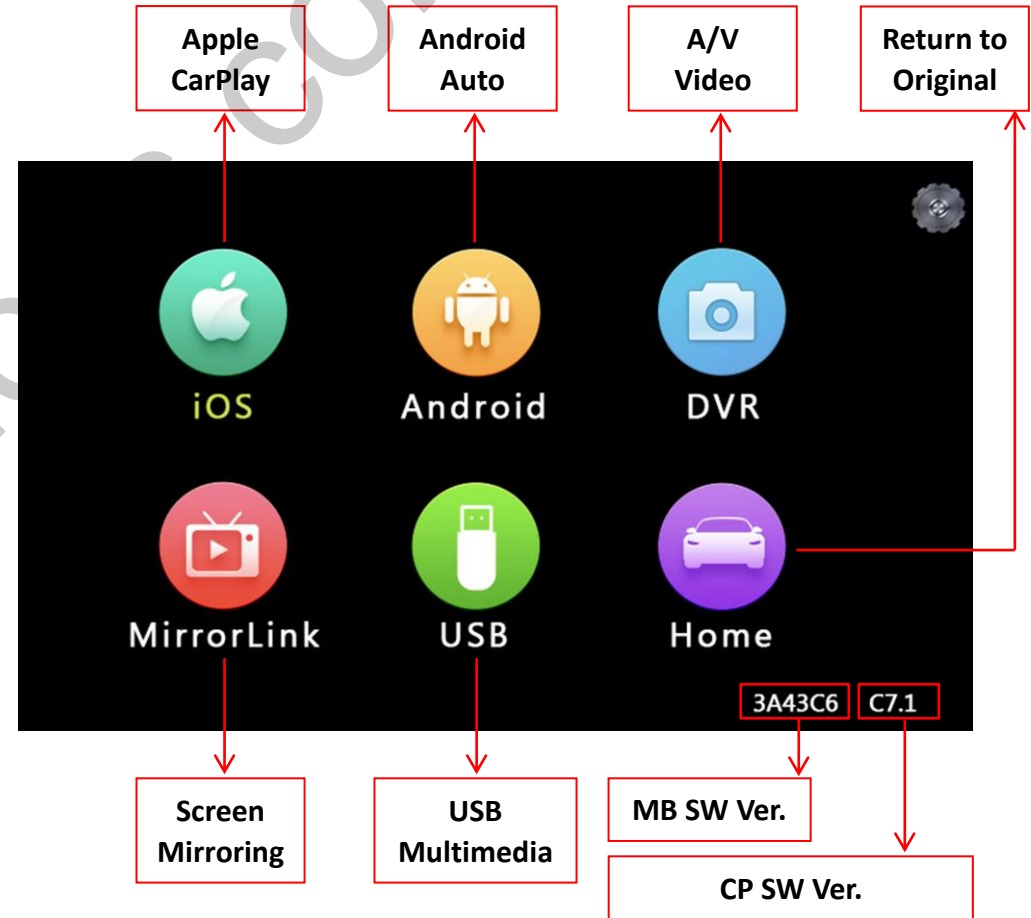
NOTE! Please reboot the interface for effective after changing any DIP setting.

Operation Instruction:

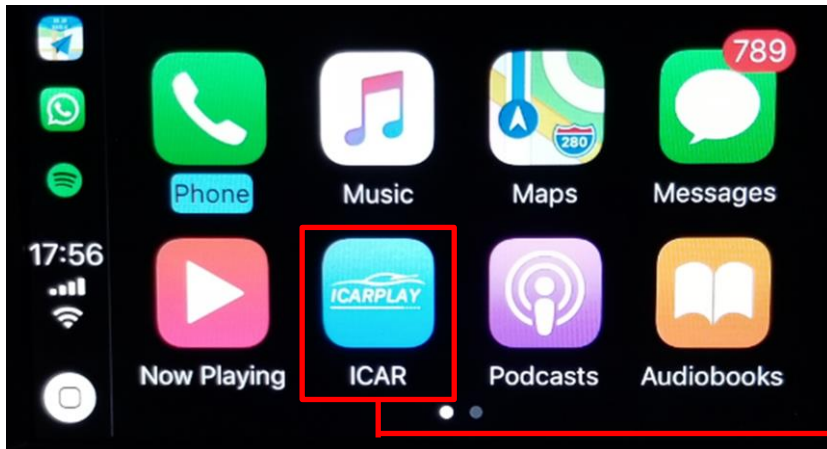
- How to switch from Original to Add-on interface



Add on module UI:



- Apple CarPlay



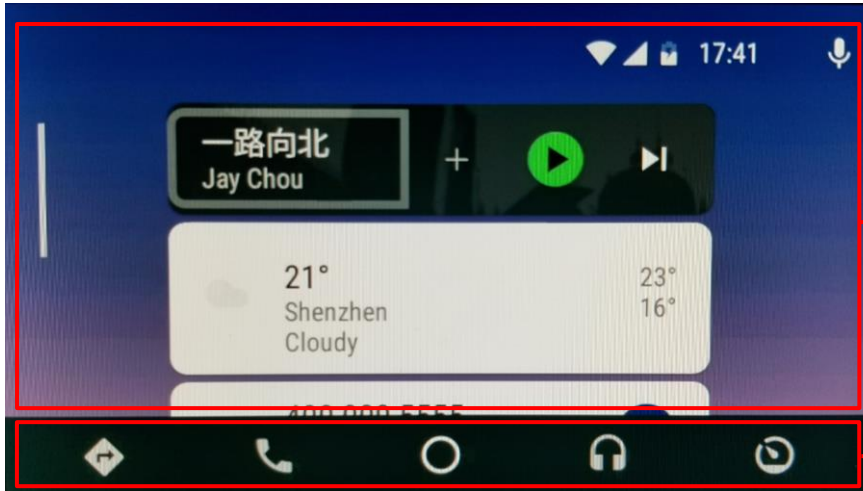
NOTE! Disconnect the Bluetooth connection between the phone and car stereo when using Apple CarPlay.

Return to add-on module UI



- ①: Click as home button; long press for switch mode: OEM-Add on-OEM
- ②: Turn the dial to move menu pointer
- ③: Answer/Hang up phone call
- ④: Click to activate Siri
- ⑤: Previous/Next song when playing music

- **Android Auto**

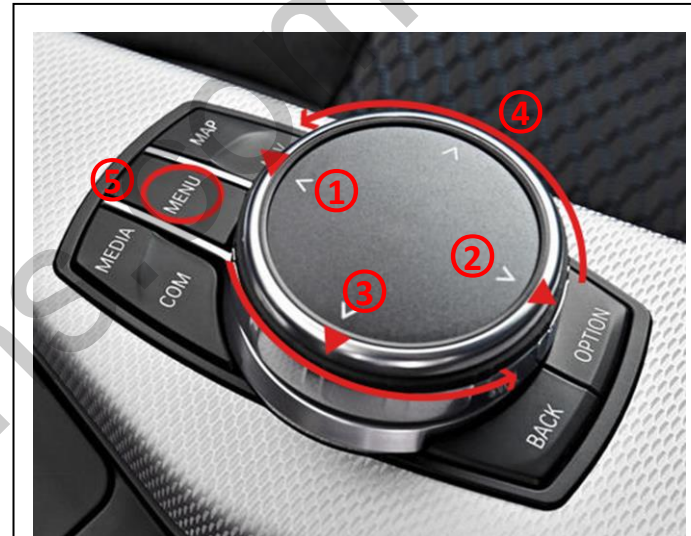


A area

B area

NOTE!

- Make sure smartphone connect to original car stereo Bluetooth for phone call audio delivering when using Android Auto.
- NOT available for activating **Google Assistant** with factory buttons, please use voice command "**OK Google**" instead.



①: Menu-pointer switch to **A area**

②: Menu-pointer switch to **B area**

③: Bring up the menu of upper left

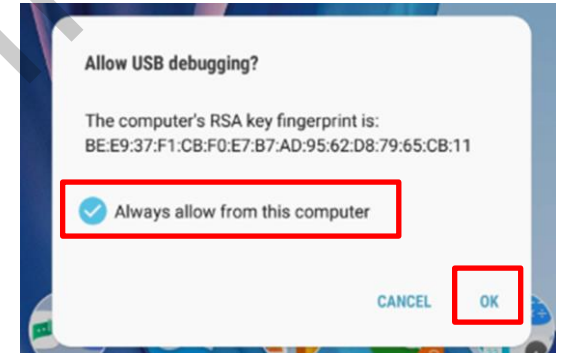
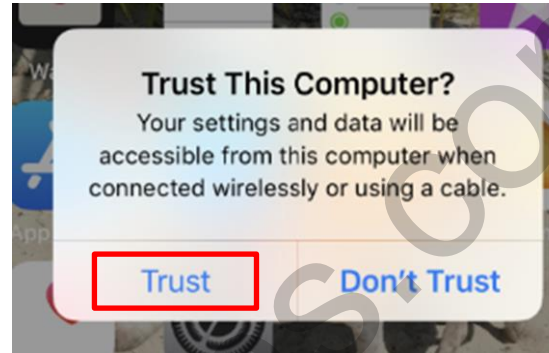
④: Turn the dial to move menu-pointer

⑤: Long press for switch mode: OEM-Add on-OEM

● Mirroring



Connect Android smartphone/iPhone with USB cable, and then enter “MirrorLink” for screen mirroring.



NOTE!

- Please always **trust or allow** when display a popup notification
- Enabling “USB Debugging” on an Android device
- Android device must connect to car stereo BT for all audio delivering

● USB Multimedia Playback



Connect a USB memory stick, enter “USB” icon for playing multimedia: Music, Picture, and Video.