

INSTRUCTION MANUAL

CARPLAY/ANDROID AUTO UNIVERSAL ADAPTER

CONTENT

Features	4
Specifications	5
Package Components	6
Connection Diagram	7
Main Menu UI	8
Apple CarPlay	9
Android Auto	10
How To Connect Bluetooth	11
USB Storage Music & Video	12
Settings	13
Start CarPlay/Android Auto Automatically	13
Touch Calibration	13
Sounds Setting	14
Display Setting	15
Language Setting	15
Wallpaper Setting	15

WARNING

In order to protect the driving safety and avoid break the traffic law; please DO NOT operate the interface while driving.

The reversing surveillance function just is used in reversing assistance. Please check the entire surroundings while reversing.

All steps of installation should be done by the well-trained specialist.

During installation, the ignition key should be taken off and after all installation finished, connect power cable last.

Please DO NOT plug or pull the connected cables in the state of power-on, in order to avoid damaged monitor or accessory.

Install wiring in a manner in which cables will not come in contact with metal parts. The wiring may be damaged by contact with metal parts, resulting in fire and shocks. Avoid all contact with hot surfaces when wiring the main unit. High temperatures may damage wiring, causing shorts, arcing and fires.

Please DO NOT put the product in the damp environment or water, in order to avoid electric shock, damaged and fire accident caused by a short circuit.

Kindly check all components are in the box when receiving the product. If anything missing, inform to the supplier/manufacturer.

Start the engine before loading, check the interface whether have function displayed, key control whether correct, the vehicle interface whether having a scratch. Please give the feedback to the supplier/manufacturer if there have any questions.

Please note that put the disassembled automotive components in a good way on the installation process, avoid scratching the instrument panel, the leftovers of connecting cables need to handle and DO NOT leave it in the car. The connecting plug must be insulated in order to short circuit.

The cables should be connected in a good way, the vehicle installation space is a little small, so reduce space usage as far as possible. There should be a good plan about connect cables, avoid affecting the active component of connecting, such as control components of turning the steering wheel, throttle and brake pedal. There need to be fastened after connecting cables in case of a drop.

FEATURES

Integrated 2 in 1 module supports Apple CarPlay, Android Auto

Supports USB HD video (up to 1080P) and lossless music (APE, WAV, FLAC, MP3, WMA, etc) playback

CVBS and HDMI (480P/720P) output

Automatic enable CarPlay/Android Auto when plugging in an iPhone/Android phone

Integrate BT module for Android Auto calling audio delivering

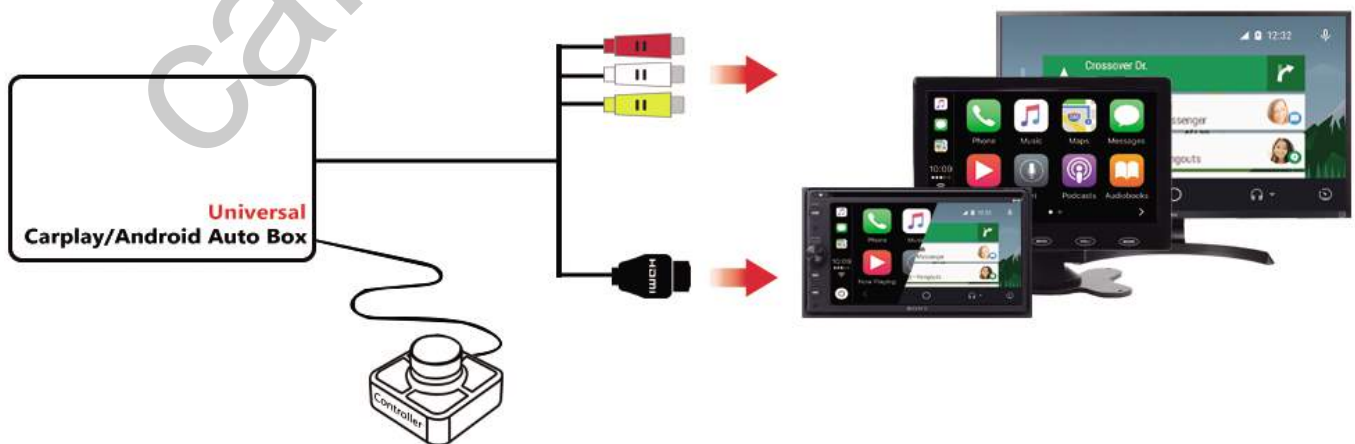
High performance audio output and support control sound volume, EQ setting

Provide external knob controller for operation

Offer high quality microphone for phone talking & voice command

Mobile phone charging

Further software update via USB



SPECIFICATIONS

Inputs	RCA*2 (1 rear camera and 1 external video in) 3.5mm AUX*1 (Microphone) USB*2
Outputs	RCA*3 (CVBS & audio L/R outputs) HDMI*1
Output resolution	CVBS: 720*480, NTSC HDMI: 800*480 (default), 1280*720 (optional, upgrade via software)
Input voltage	9-16V
Consumed power	5W
Working temperature	-20°C~75°C
Main unit dimensions	110*75*30 mm
Weight	170g



For any car/monitor with HDMI or RCA AV input.

PACKAGE COMPONENTS



Main Unit



Power Cable



Touch/Video Cable

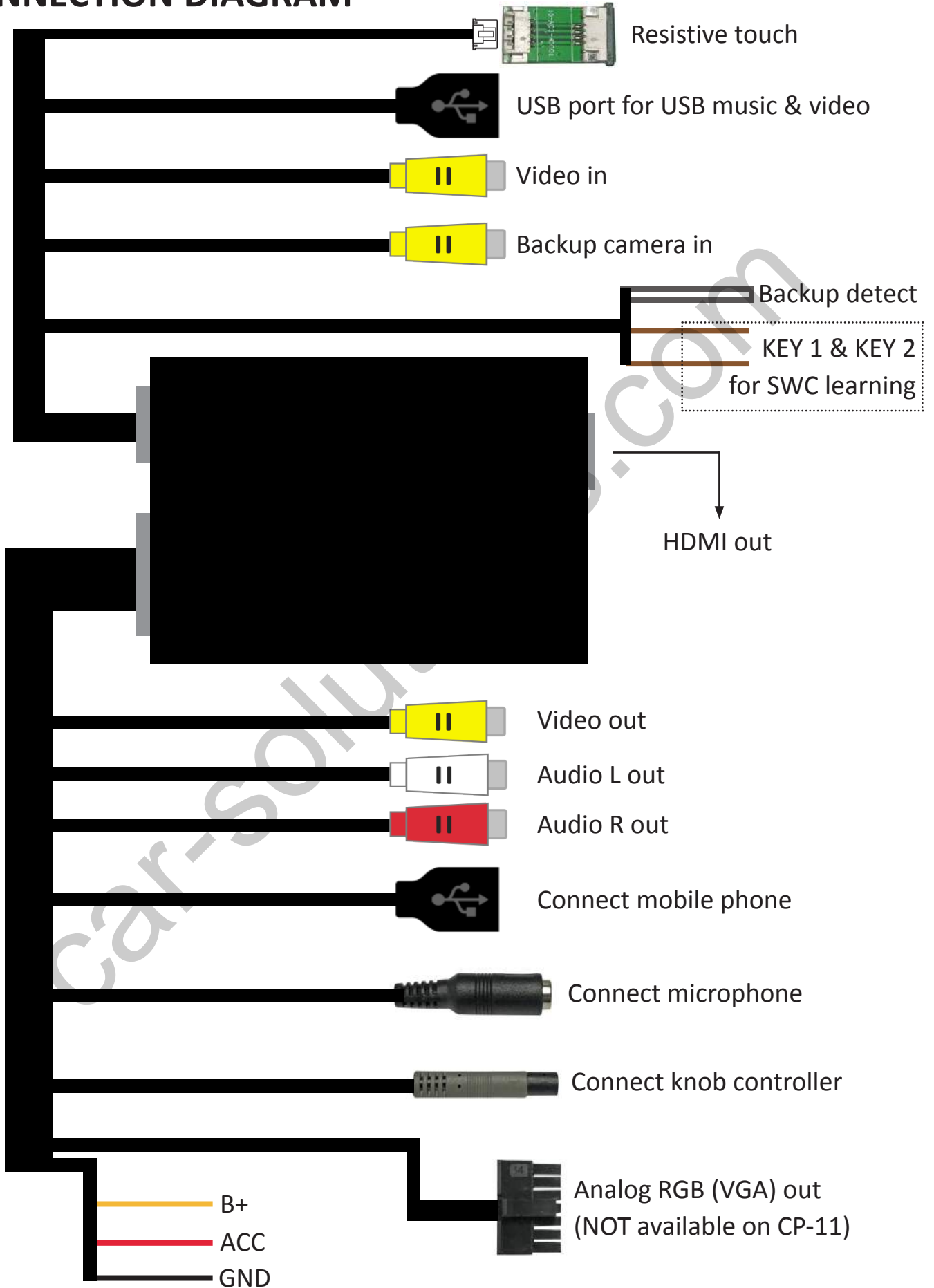


Knob Controller

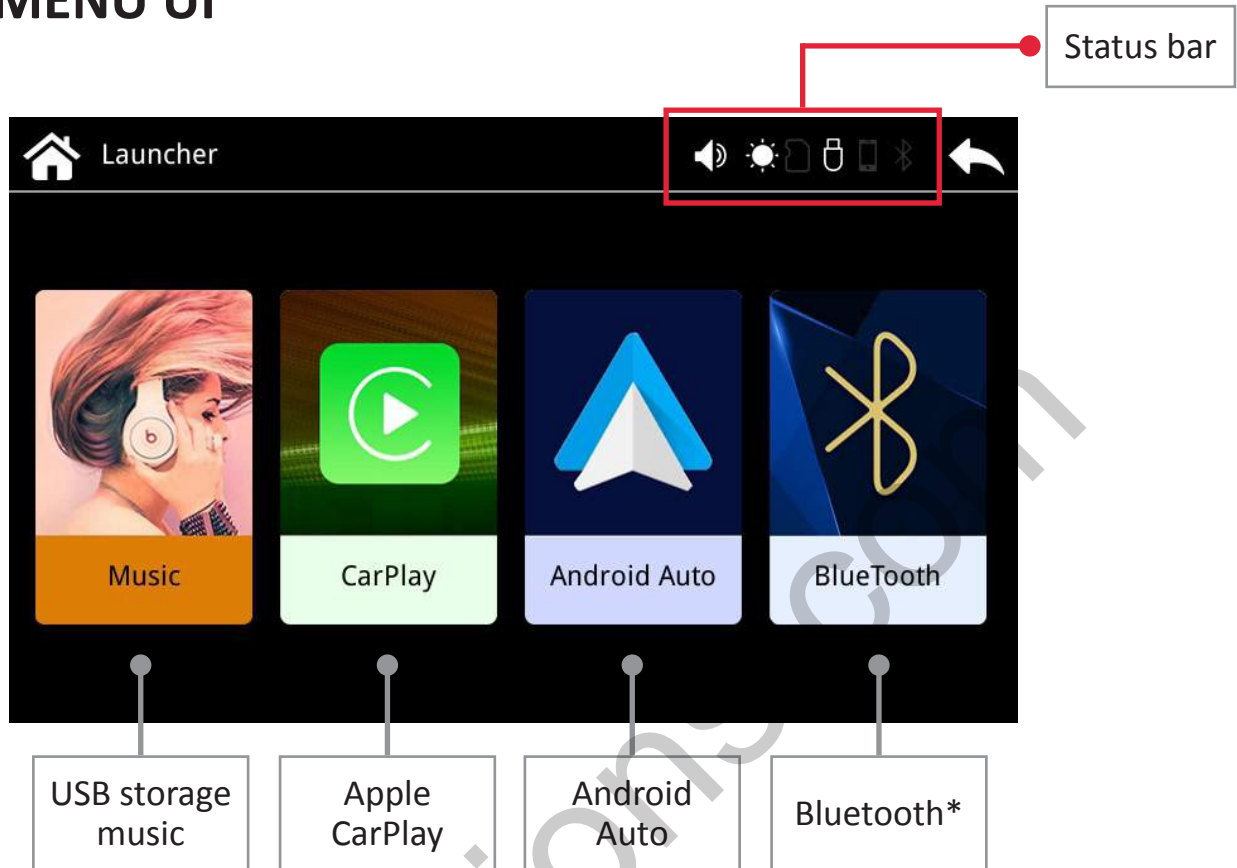


Microphone

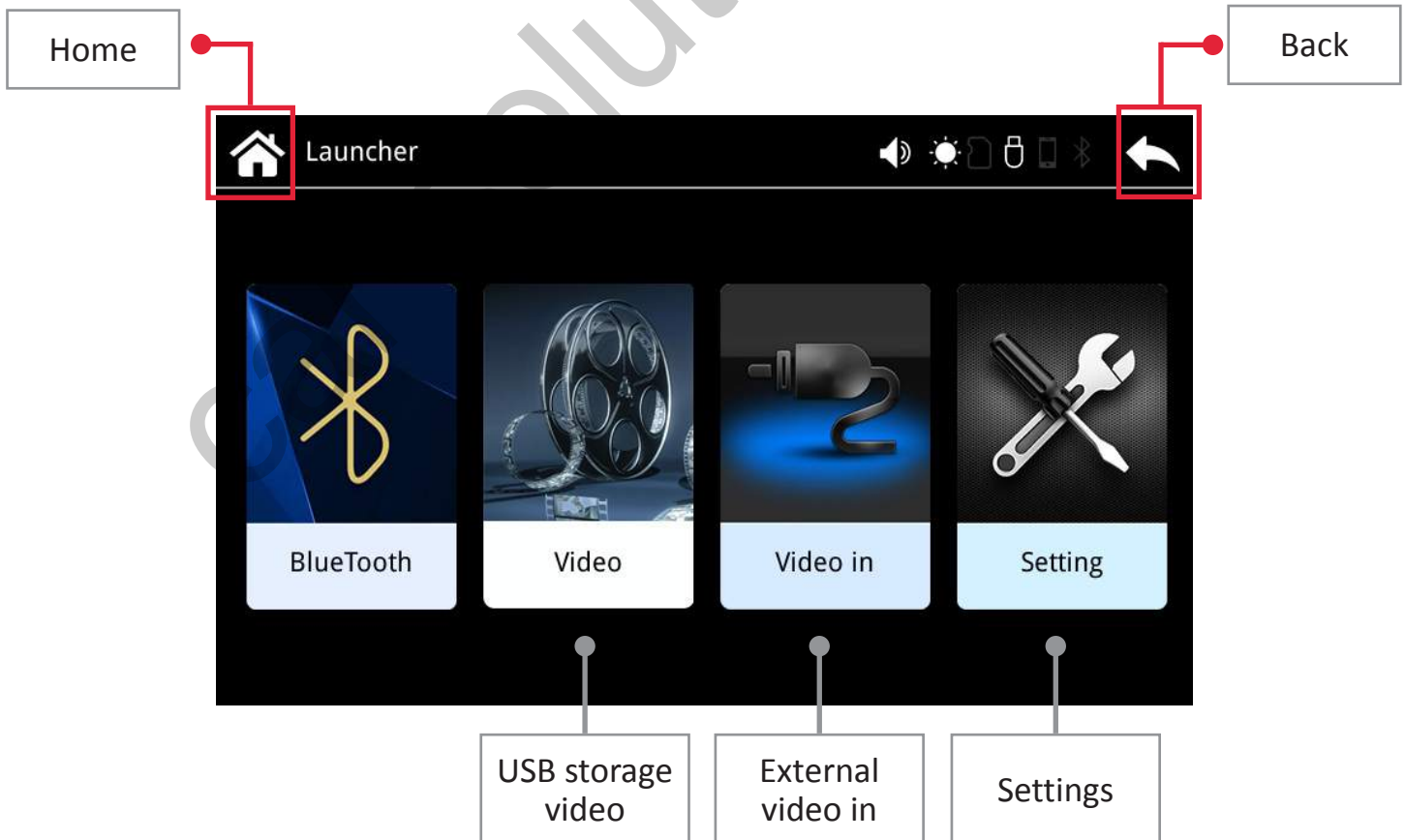
CONNECTION DIAGRAM



MAIN MENU UI



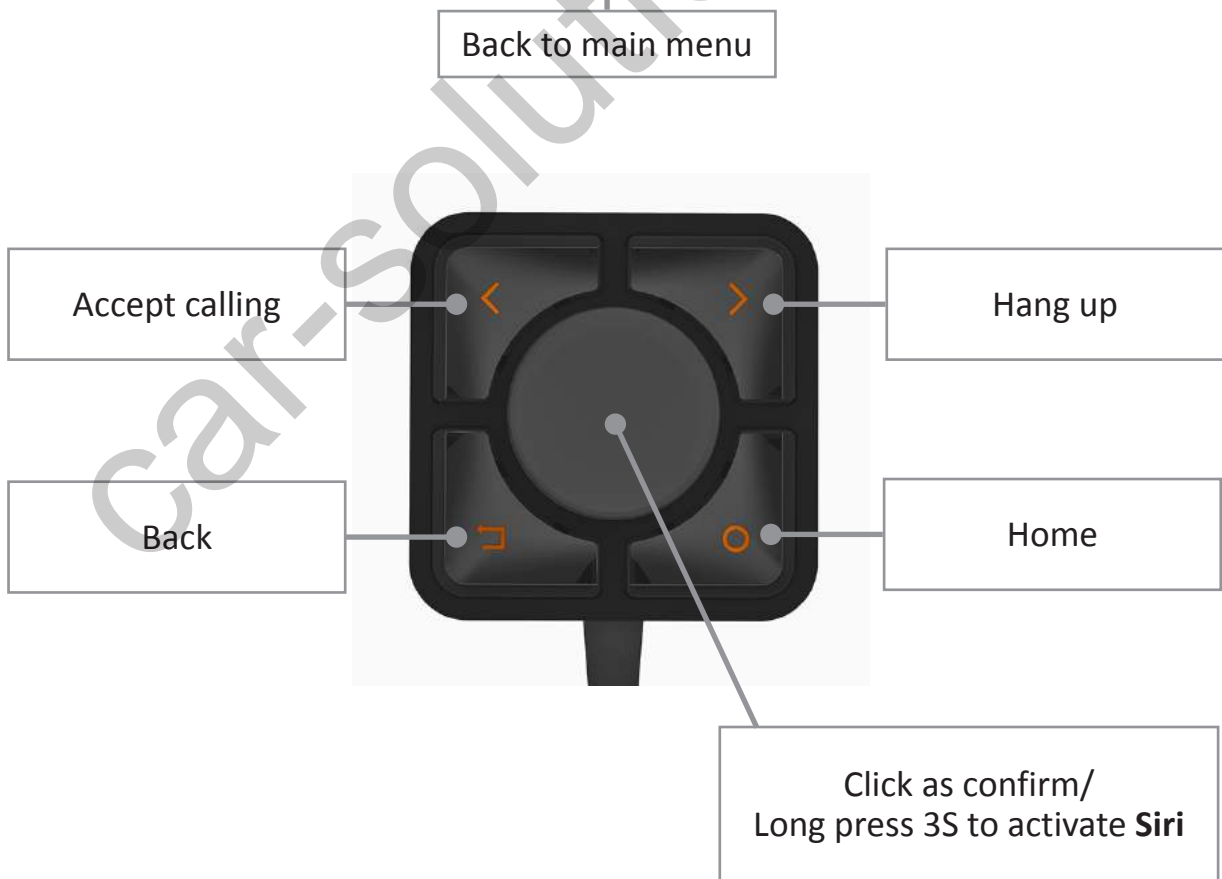
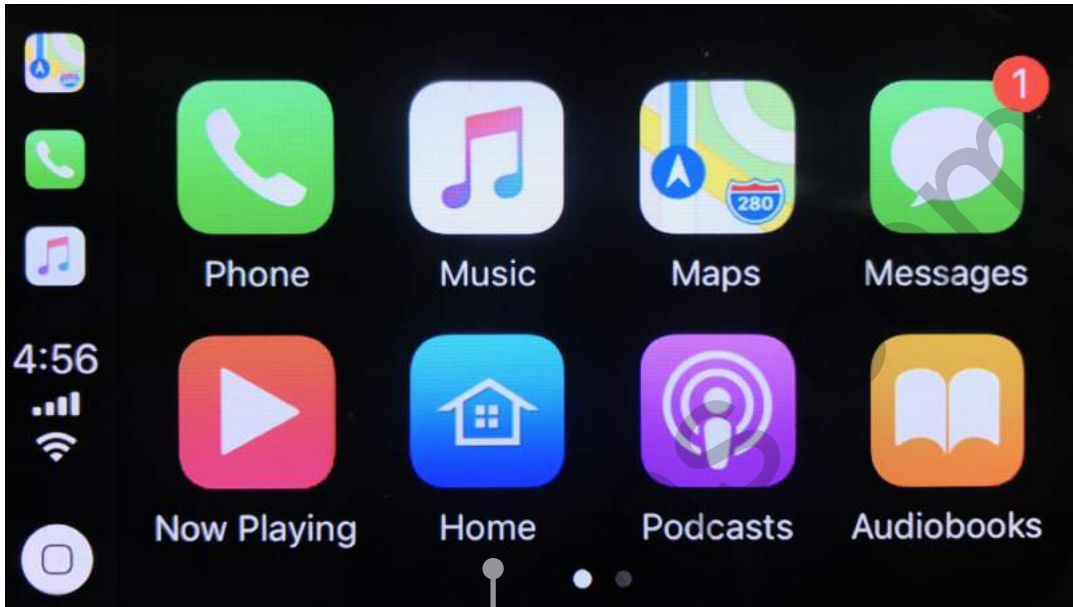
* Bluetooth is designed for Android Auto calling audio delivering



APPLE CARPLAY

Plug in your iPhone with USB cable, select and enter CarPlay

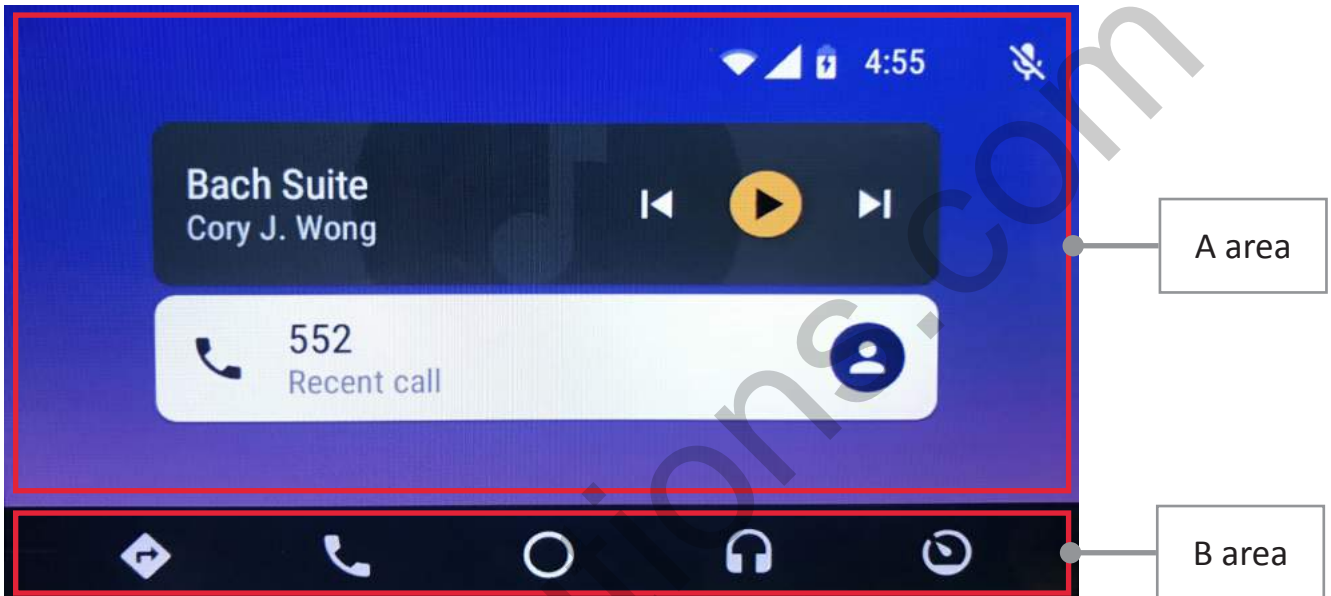
NOTE! Please disconnect iPhone's bluetooth before using Apple CarPlay.



ANDROID AUTO

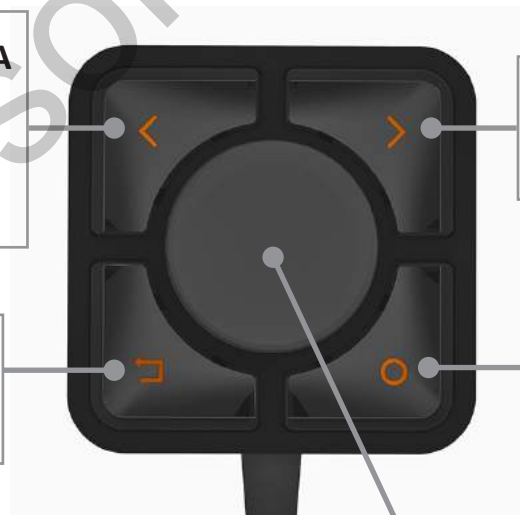
Plug in your Android smartphone with USB cable, select and enter Android Auto

NOTE! Make sure smartphone connect to this adapter's Bluetooth for phone call audio delivering before using Android Auto.



- Move menu-pointer to **A area**
- Pop up upper left menu
- Accept calling

Move menu-pointer to **B area / Back**



- Activate **Google Assistant**
- Hang up

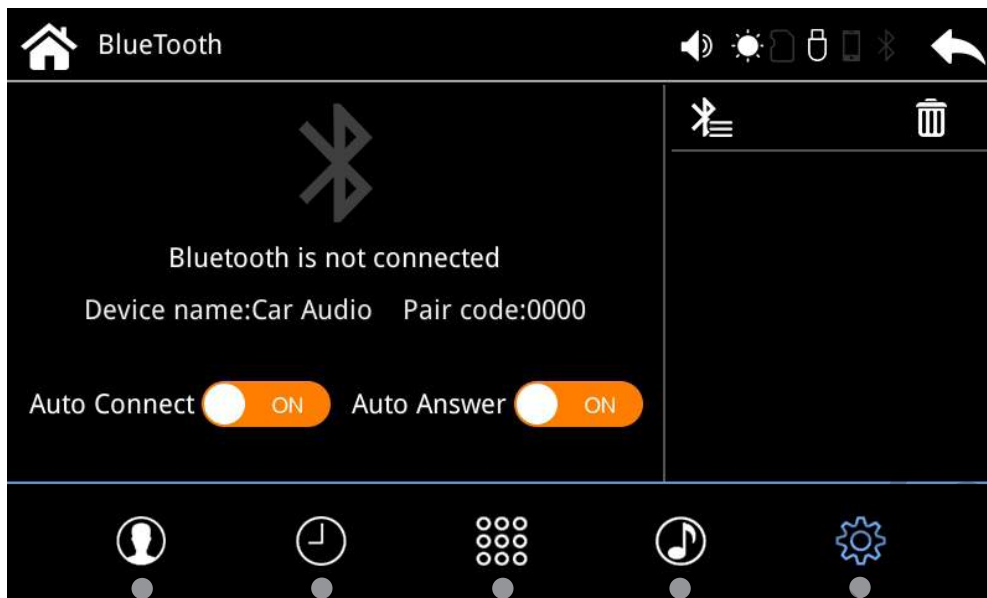
Home

Click as confirm/
Long press 3S to activate **Google Assistant**

HOW TO CONNECT BLUETOOTH

Device name: Car Audio

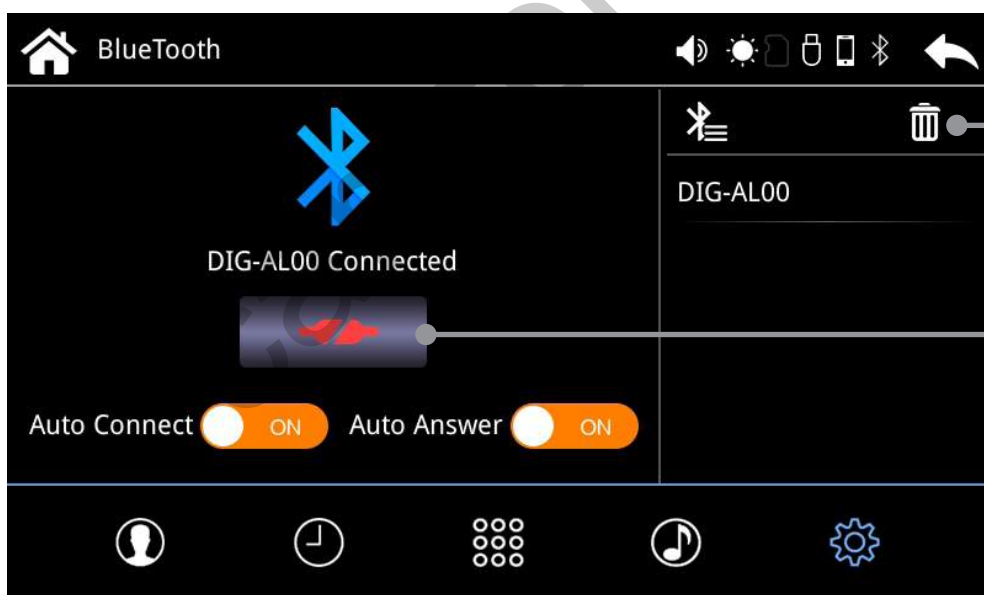
Pair code: 0000



Auto Connect ON: mobile phone connect Bluetooth automatically after starting the adapter

Auto Answer ON: Accept calling automatically

Contacts Recents Keypad Music BT Setting

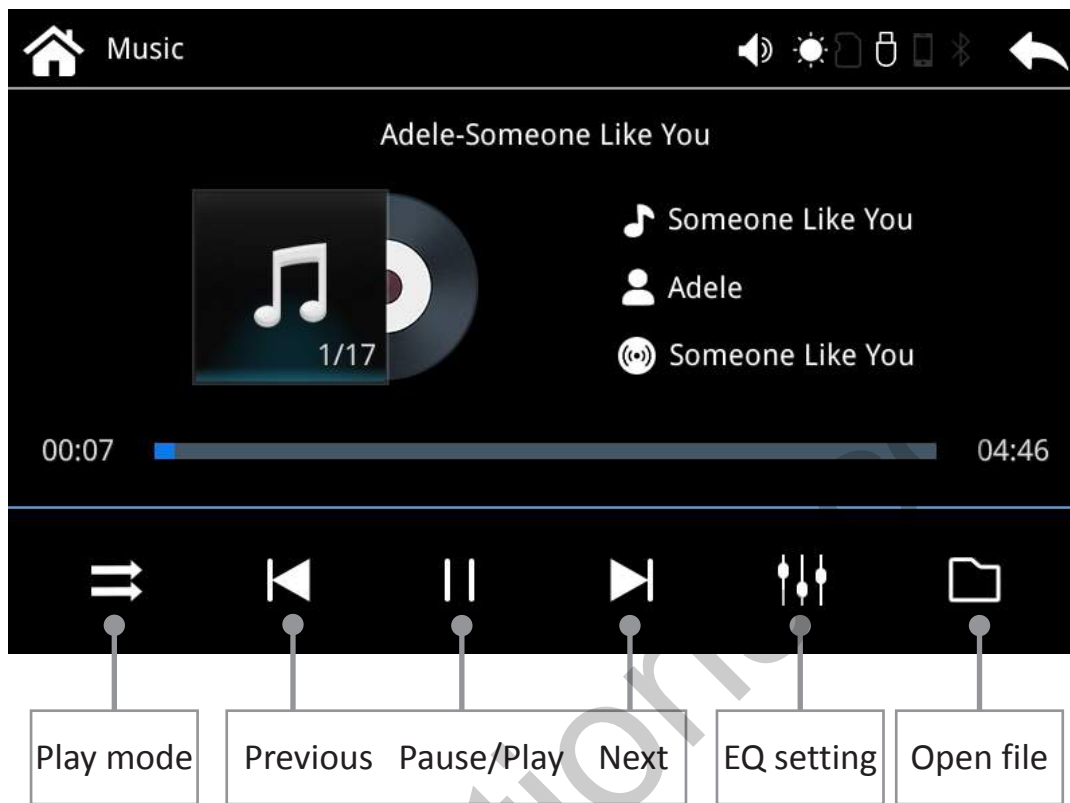


Delete paired device

Disconnect BT

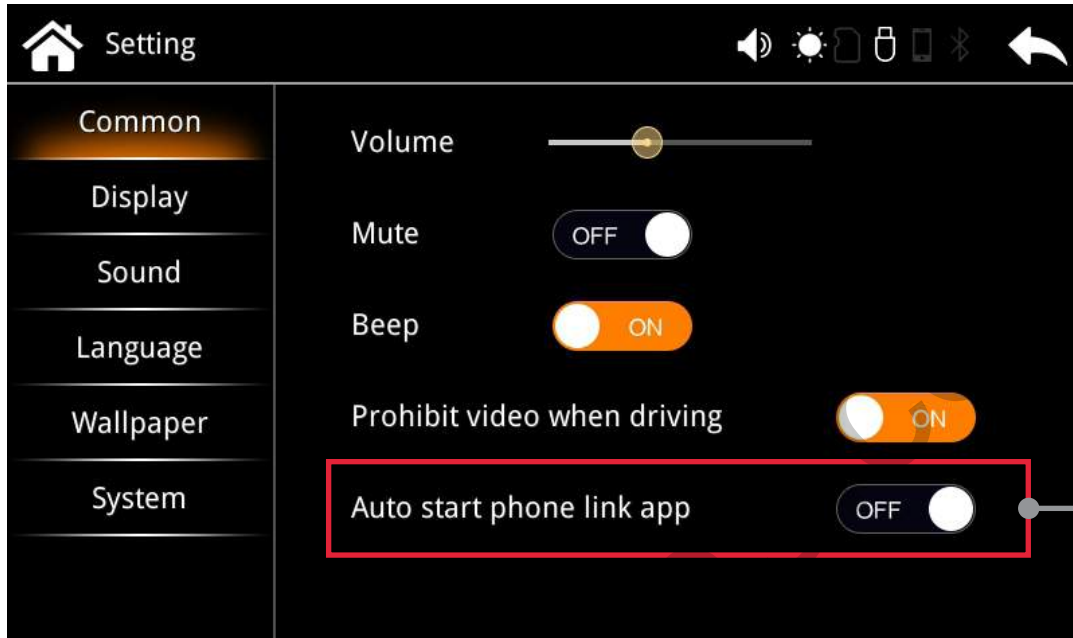
NOTE! Bluetooth function is designed for Android Auto call audio delivering. It's unnecessary to connect BT when using CarPlay on iPhone.

USB STORAGE MUSIC & VIDEO



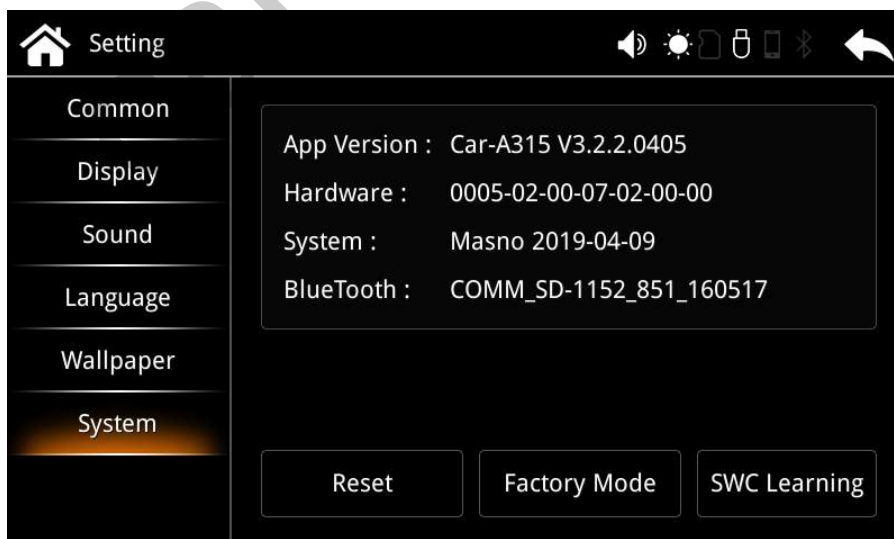
SETTINGS

● START CARPLAY/ANDROID AUTO AUTOMATICALLY

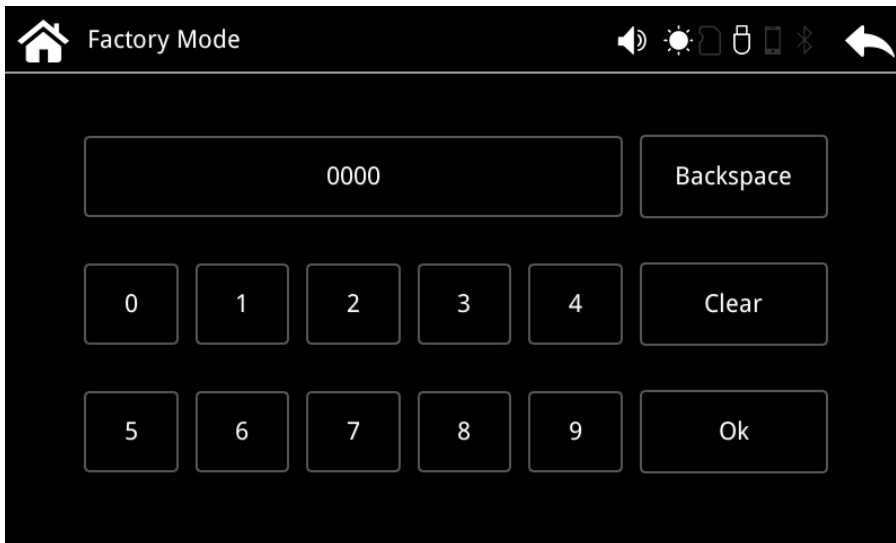


Please select "**Setting**" on main menu and set "Auto start phone link app" **ON**. Then "Carplay" or "Android Auto" will start automatically after connecting your iPhone or Android smartphone.

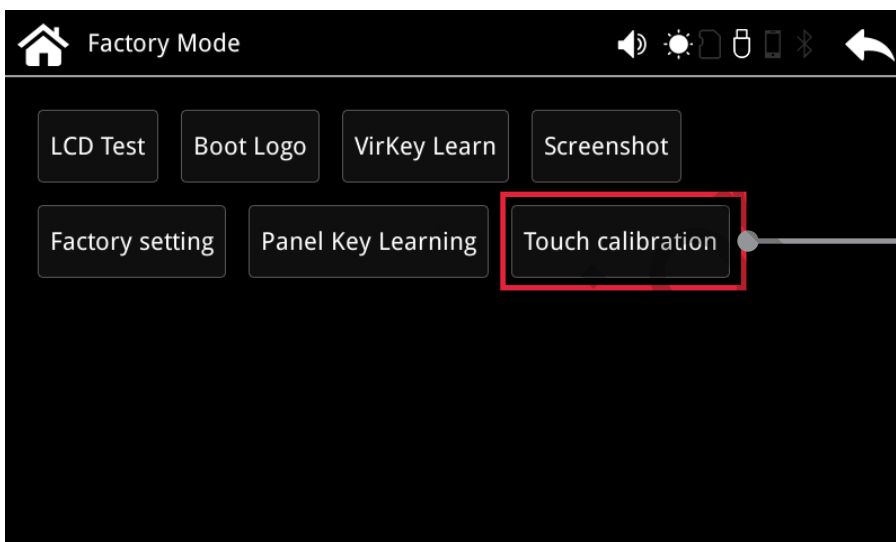
● TOUCH CALIBRATION



1. Select "**Setting**" on main menu -- "**System**" -- "**Factory Mode**"

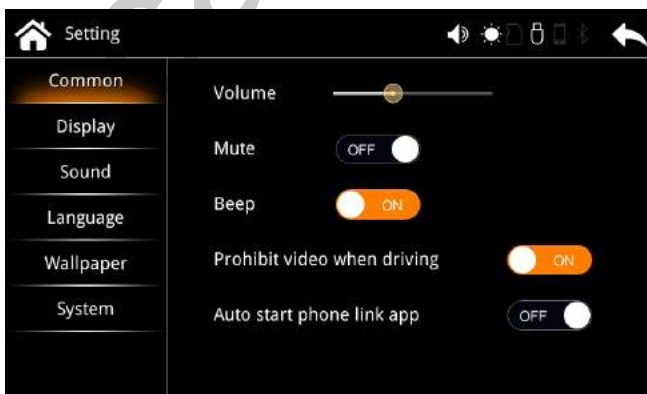


2. Type "0000" and select "OK"

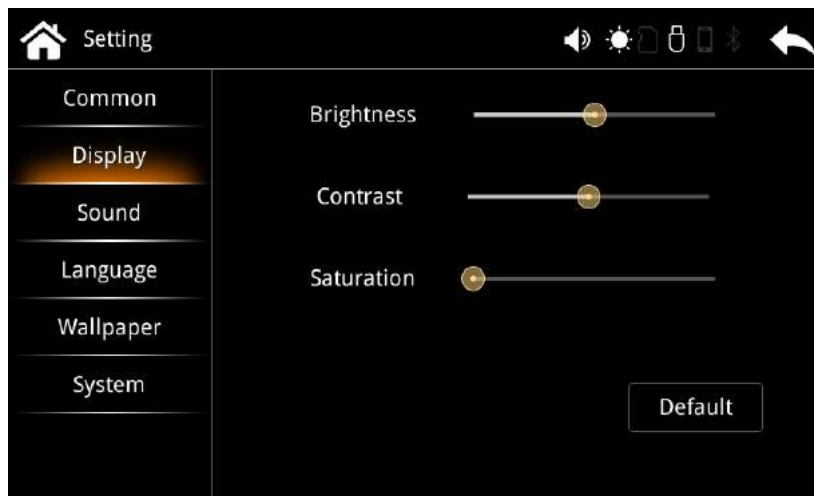


3. Select "Touch calibration" and follow the steps

● SOUNDS SETTING



● DISPLAY SETTING



● LANGUAGE SETTING



● WALLPAPER SETTING

