

NAC 800*480 , 7 inch Peugeot Rear view Camera Interface

--

Notice:

- * Keep flameout before installation
- * Make sure interface match with your car model

--

(Installation on a 2017 Peugeot 308, details can be different based on car models)

Installation process:

1. Take apart panel above Gear box and LCD.



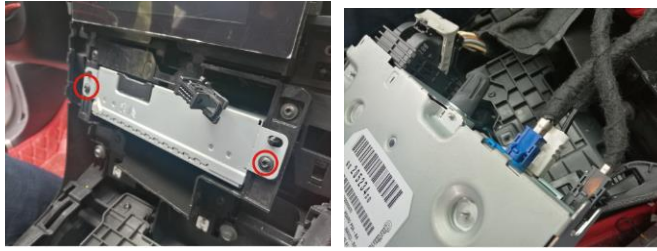
2. Be aware of screws marked on the pictures. (Around LCD, Center console and GearBox.)



3. Take away LCD Panel.



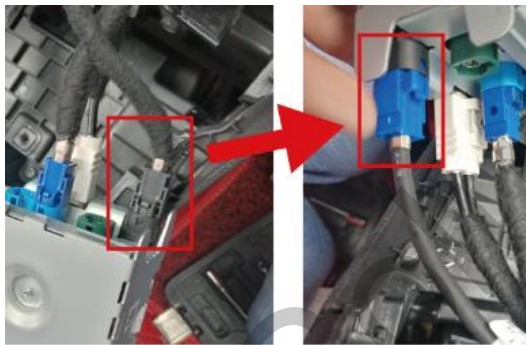
4. Take out of Main unit



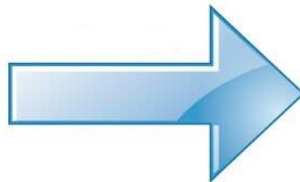
4. Plug out of Quadlock connector, and connect it to Interface cable accordingly.



5. Factory LVDS, from main unit to Interface box; Interface LVDS, from Interface box to Factory LVDS position;



6. Connect camera to camera inputs harness, and finish installation.



--

DIP switches setup:

| SW1 | SW2 | car models |
|-----|-----|------------------|
| OFF | OFF | 2017 Peugeot 308 |
| ON | OFF | 2017 Peugeot 408 |

SW4 SW5 Function mode
OFF OFF Reversing Guidelines
ON OFF without guidelines
OFF ON Factory Rear cam. mode

SW3 Graphic Radar
OFF Enable
ON Disable

SW6 Second Video_IN
OFF Front view mode
ON Normal Video_IN

Car-Solutions.com