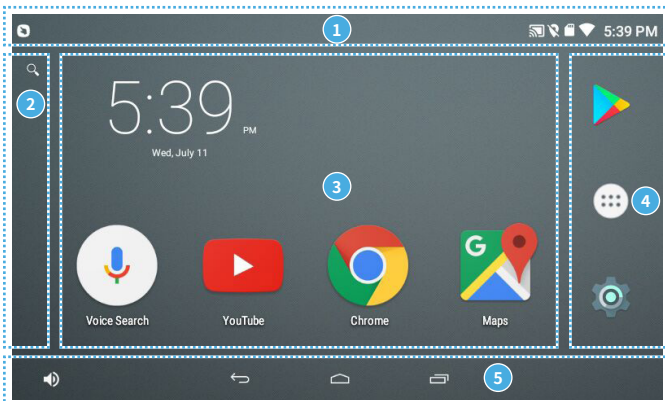
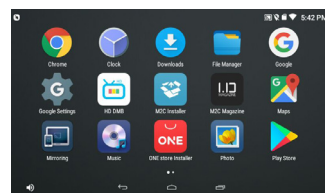


HOME



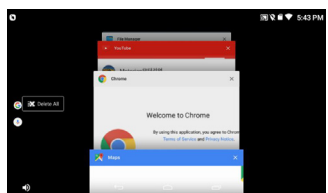
- 1 SYSTEM BAR** Displays the notification contents and status of the device. You can drag down to see a list of quick settings and notifications.
- 2 SEARCH** Search the contents of a device such as a file, a function, an app, or input the contents to the Internet. You can search and find the information you want.
- 3 HOME PANEL** This is where you place your app shortcuts, folders, and widgets directly. You can move the Home panel area to another page by sliding it left or right.
- 4 FAVORITES TRAY** Always display frequently used shortcuts and folders, no matter what home panel you are looking at. Touch the All Apps button in the center to see a full list of apps.
- 5 NAVIGATION BAR** Provides a function button to exit the running app or move the screen.

APP DRAWER



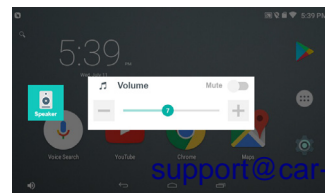
Press and hold an app to create a shortcut in Home.

RECENT APP



You can touch an app item to switch it to the app or to the left or right to delete it from the list.

VOLUME



You can adjust the volume of the output sound and set the mute.

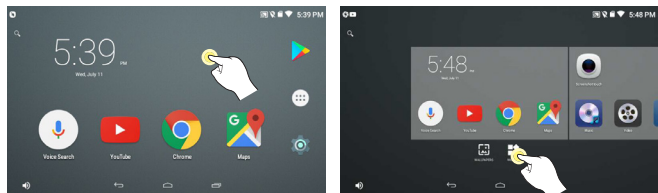
The left speaker switch turns on / off the terminal speaker output. It is a feature.

You can turn mute on or off by touching and holding the speaker button on the left side of the navigation bar.

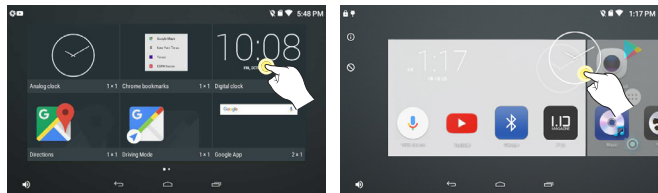
support@car-solutions.com

How to create widget

In addition to the built-in widgets, you can install and use additional widgets from the Google Play Store.



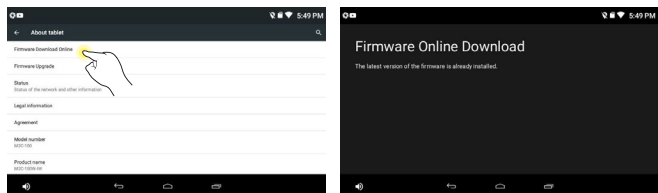
Touch and hold an empty area on the Home screen to go to the Home Edit screen. Touch the Widgets button to display a list of available widgets.



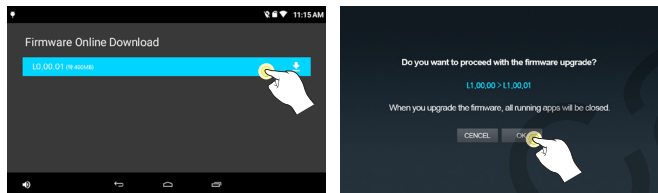
If you touch and hold a desired widget in the widget list, you can drag and drop the selected widget on the screen. After dragging to the position of the desired home panel, the widget is created at the specified position when the touch is released.

Firmware online download

'M2C Carblet' can search for and upgrade the latest firmware from online servers.

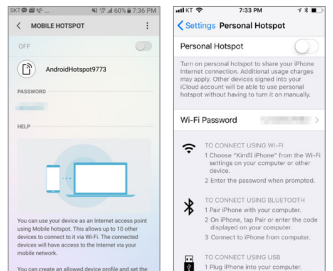


Retrieves firmware versions that can be upgraded from the 'Carblet' Server.



You can start downloading by touching your latest firmware. During the download process, you can cancel it or run another task at any time. When the download is completed, the firmware upgrade will be performed automatically.

- ! If the firmware file is large, data usage fees may be charged if the remaining data usage is exceeded.
- ! If you stop upgrading after completing the firmware download, The system will again indicate whether to upgrade at next boot. (If there is a downloaded firmware file)



Android - Hotspot iPhone - Hotspot

To connect the M2C Cabelt to your smartphone for wireless data communication, You need to set up hotspots.

How to set the hotspot on the smartphone you want to connect may vary slightly depending on the smartphone. Please refer to the instruction manual of each smartphone.

When you connect to a hotspot of a smartphone and make data communication, data communication charges may occur depending on the smartphone plan used.



How to use 'Hotspot Auto' APP

The 'Hotspot Auto' app will automatically turn on the hotspot when your smartphone gets close to the 'M2C Cabelt'.

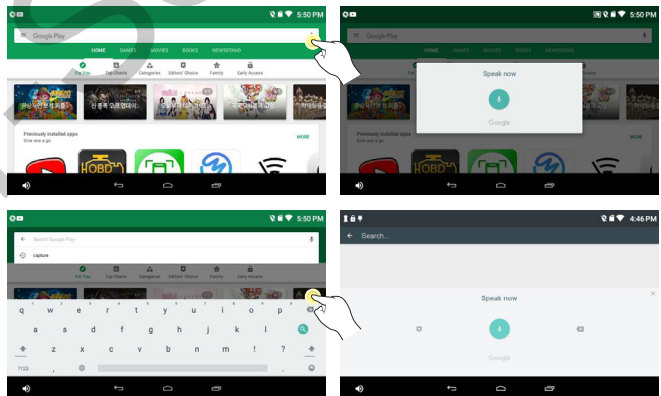
(* 'Hotspot Auto' uses Bluetooth communication to recognize the M2C cabelt. So, Bluetooth on your smartphone and 'M2C Cabelt' should be turned on.)

* 'Hotspot Auto App' of the 'M2C Cabelt' is only supported on Android smartphones.

- ① Install the app by searching for 'M2C Carblet' or 'Hotspot Auto' in the Google Play Store. (Please check the app icon.)
- ② Run the app and enter your product's serial number or Wi-Fi MAC Address to authenticate. (Authentication is performed only once at the beginning.)
- ③ After authentication, select 'M2C Carblet' or Bluetooth device in your car from the list of Bluetooth devices. When the app recognizes the specified device via Bluetooth, it automatically turns on the smartphone's hotspot.
- ④ When the hotspot is on, search for "Wi-Fi" in "M2C Carblet" and connect it to the smartphone you want to connect to the hotspot. If a password is set, you must enter it.
- ⑤ If you always keep on Bluetooth on your smartphone, it will automatically connect to the hotspot.

Voice search

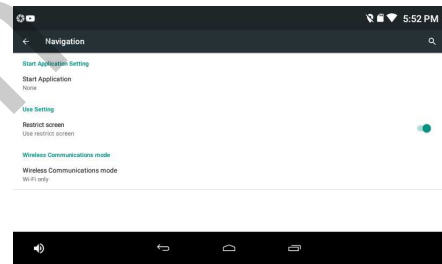
'M2C Carblet' has built-in Google voice search.



- ! Touch the "Google Settings" icon on the list screen of all apps to set various options for voice recognition.

Navigation setting

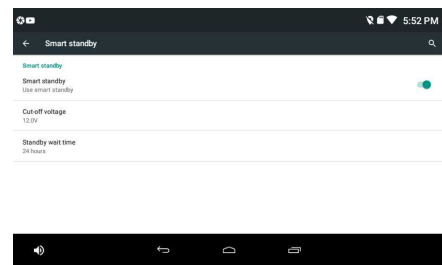
You can select the default navigation app from the Settings menu. If you set this, the selected navigation application is executed immediately when M2C-120W is executed.



- 1 START APP** User can set a specific application to run automatically when the M2C Carblet starts.
- 2 VIDEO REGULATION** Limit display of video such as DMB, video, and mirroring while driving. This feature only applies to native apps.
- 3 Communication Method** Displays the communication method and carrier currently in use.

Smart Standby

'Smart Standby' is a function that keeps the power of the product even when the vehicle is turned off, and displays the screen quickly at the next start-up. This function uses the battery power of the car. Therefore, various 'Cut off' options are provided to prevent discharge of the battery.



- 1 SMART STANDBY** the M2C Carblet connect to permanent power of car. When the car is turned off, it switches to sleep mode, and then displays the screen quickly at the next start-up. (OFF can be set)
- 2 CUT-OFF VOLTAGE** After the vehicle is turned off and enters Smart Standby mode, Check the battery voltage of the vehicle and if it falls below the set value, the M2C Carblet will automatically shut down. After the auto shutdown, it boots to normal mode at the next start-up.
- 3 STANDBY TIME** After the vehicle is turned off and enters Smart Standby mode, M2C Carblet will automatically shut down if the car does not start for a set period of time to prevent the car battery from discharging. After the auto shutdown, it boots to normal mode at the next start-up.

- ! 'Smart Standby' is available only when the M2C Carblet is connected to the permanent power of car. If connected to the cigar jack, even if Smart Standby is set to ON, the power is turned off when the vehicle is turned off.
- ! If it is not set to the correct value, Smart Standby may cause the vehicle battery to discharge before the product is turned off. Be sure to set it to an appropriate value.

Navigation Box on Android Manual



INFORMATION

Precautions

- This product is assistive devices that help the driving safely. Do not drive by rely solely on this product.
- The rated voltage of this product is DC 12. And it requires the correct wiring connections and mounting. Please install only by a qualified technician.
- GPS Satellite reception may be unstable in a particular area or some vehicles that have the special tinted windows and electromagnetic interference.
- Please read the manual prudently before using this product. And then use this product correctly.
- Please make sure to follow all instruction from manual.
- To avoid any risk of electric shock or other injuries, please never disassemble and reassemble this product.
- Never feed power to other electronic products by cutting the insulation of the power supply lead of this product and tapping into the lead. The current capacity of the lead will be exceeded, causing overheating.
- This product yourself Installing or servicing this product and its connecting cables may expose you to the risk of electric shock or other hazards, and can cause damage to this product.
- Do not cut the GPS antenna cable to shorten it or use an extension to make it longer. Altering the antenna cable could result in a short circuit or malfunction.
- Any function that requires your prolonged attention should only be performed after coming to a complete stop. Always stop the vehicle in a safe location before performing these functions. Failure to do so may result in an accident.
- Please remember to wear your seat belt at all the times while operating your vehicle. If you are in an accident, your injuries can be considerably more severe if your seat belt is not properly buckled.
- Company can not be held responsible for incidental damages of the driver caused as a result of using the product.

Components

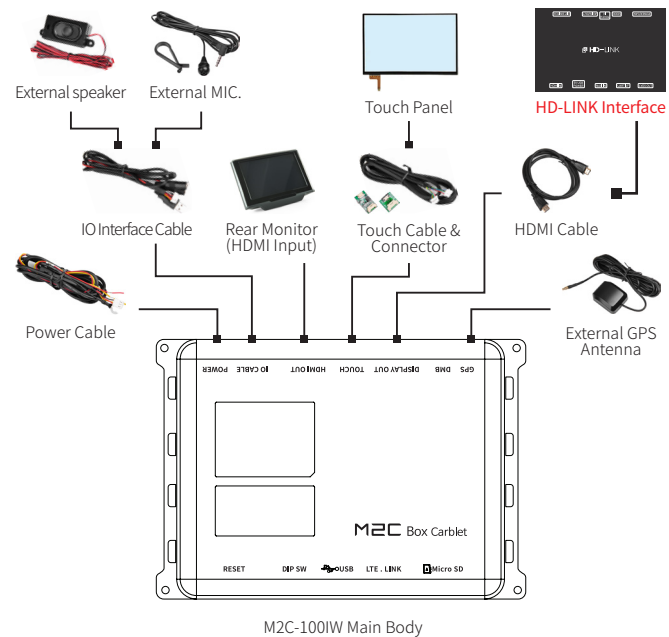
Please check the following components after opening the package.
(Component images may differ from actual components.)

Basic Components



INSTALLATION

Full Diagram



Supports the various external input equipment using USB port.



M2C Carplet can work with various peripherals. Wireless keyboard, mouse as well as USB, SD card, SSD external hard drive, camera and can be connected.

DIP S/W Setting - *ON : DOWN, OFF : UP



Resistive touch mode.



Resistive touch mode. Calibration Mode - Return off to #2 after complete calibration.



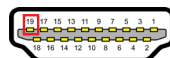
Capacitive touch mode. (indiwork)
Touch type selection in "C-Touch select" application



UART Touch in HDMI CABLE (LVDS)
- Touch work by 19pin map in HDMI Cable. (Interface LVDS)

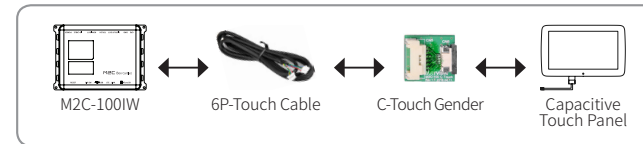
▲ May not be support depending on interface model type and car model.

HDMI PINOUT Pin NO # 19 Touch TX



Touch Panel Connection

Capacitive Touch Panel

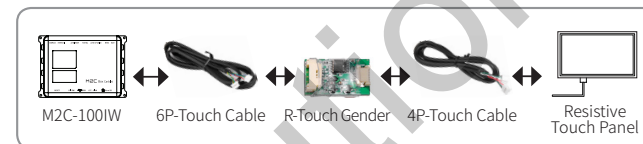


* Adjust the 1-pin of the DIP SW for using the capacitive touch.

* Selects the touch type in the 'C-Touch select' application.

If you are using a capacitive touch panel, set the 'DipSwitch 1' to ON, and selects the touch panel size in the 'C-Touch Select' application using the mouse. (The mouse can be used by connecting to a USB port.)
If the correct touch panel is not selected, touch recognition will not work properly. Selects the correct touch panel in the list and reboot to reflect the settings.

Resistive Touch Panel

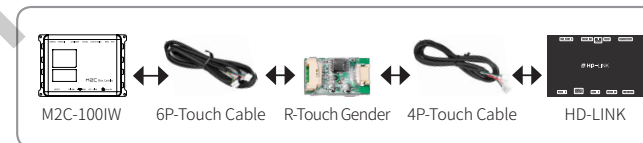


* Turn off all dip switch to use the resistive touch.

* Resistive Touch Calibration.

Touch calibration of Resistive Touch can be done by turning on 'DIP switch 2'. When the touch calibration is completed, be sure to change 'DIP switch No. 2' to OFF. If DIP switch is ON, touch calibration can be repeated.

Original Touch Monitor



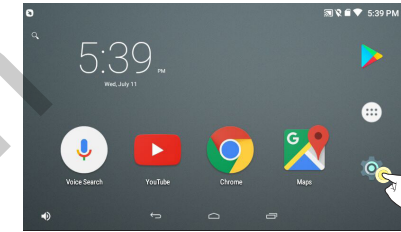
* Turn off all dip switch to use the original touch.



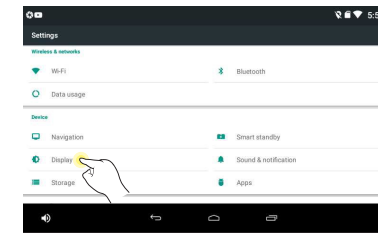
Please check the DIP switch setting for each touch connection method. If the dip switch is incorrect, the touch will not work. After touch connection, please perform touch calibration.

TOUCH SETTING

If the touch is misrecognized or errors occur frequently, you can calibrate touch recognition through touch setting.

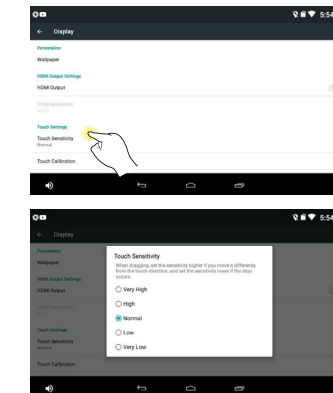


(On the Home or App drawer screen) Touch the Settings icon to launch your preferences.

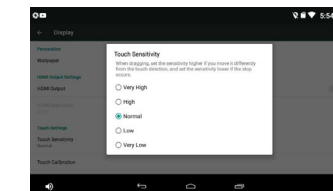


* Preferences menu > Display

Touch Sensitivity Setting

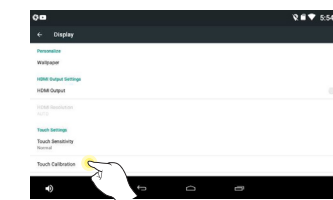


* Display > Touch sensitivity



Select the appropriate adjustment value from the displayed pop-up. If you move it differently from the direction of the touch when you drag, set the sensitivity higher. If the stop occurs, set the sensitivity lower.

Touch Coordinate Setting



* Display > Touch coordinate correction



Touch the center of the red circle to complete touch coordinate correction.

Specifications

CPU	MediaTek Quad-core
VGA	Mali 450 MP4
OS	Android 5.1 Lollipop
Operating Temperature	-10°C ~ 60°C
Wi-Fi	802.11 a/b/g/n
Display	NC (Using the car LCD)
RAM/ROM	DDR3L 1GB / eMMC 16GB
GPS	U-Blox 8 (Autonomous online & AssistNow)
Size	149 x 105 x 19.5 mm
Bluetooth	4.0

Product Warranty

Thank you for purchasing our product. We offer the warranty for 1 year from the date of purchase. The warranty period for this product is calculated from the date of purchase, so be sure to write the date of purchase.

Product Information	Product Name	M2C-100IW
	Date of purchase	
	Model Number	
Customer Information	Serial Number	
	Name	
	Contact	
	Address	

1. Free A/S

We will provide free after-sales service within one year from the date of purchase only in case of defects in manufacturing and naturally occurring faults within the warranty period.

If this product is used for any purpose other than its original purpose or for commercial use, the warranty period will be shortened to six months.

2. Paid A / S

- Free A / S warranty period has elapsed.
- Failure caused by customer's negligence or carelessness.
- Defects caused by external factors, not defects in the quality or performance of the product.
- When you want to purchase accessories or consumables separately.
- Failure due to product disassembly.

www.car-solutions.com