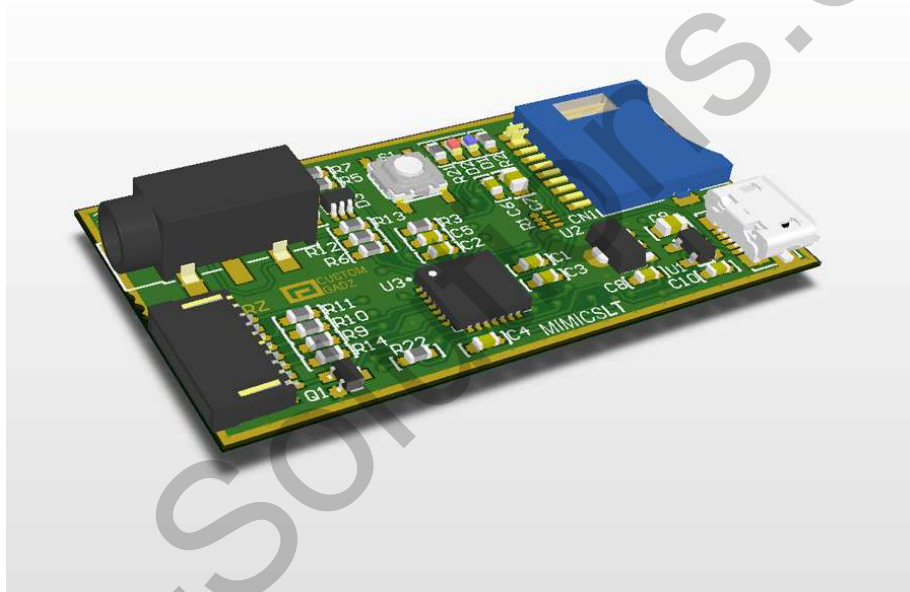


USER MANUAL



MimicsLT - Gives you plug n play touchscreen and multimedia control interface for your Android stick/box.

SOME USES:

- Custom Android systems for automotive vehicles
- Allows you to quickly evaluate the performance and functionality of your Android TV stick/box with minimal setup and fuss.
- Android Kiosk display systems
- If touch support is not required device can be used as a 3.5mm resistive to USB multimedia converter

Table of Contents

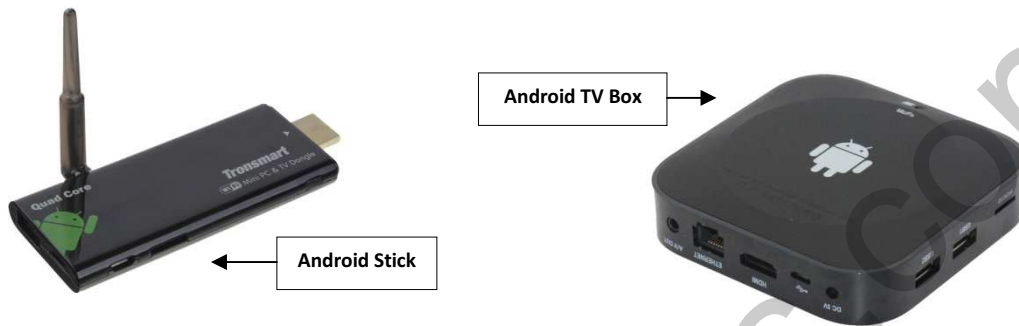
1. Overview
2. What's in the box
3. Quick start guide
4. Touchscreen configurations
5. Optional multimedia interface
6. Updating The Firmware
7. Additional Information/Support

Car-Solutions.com

1. Overview

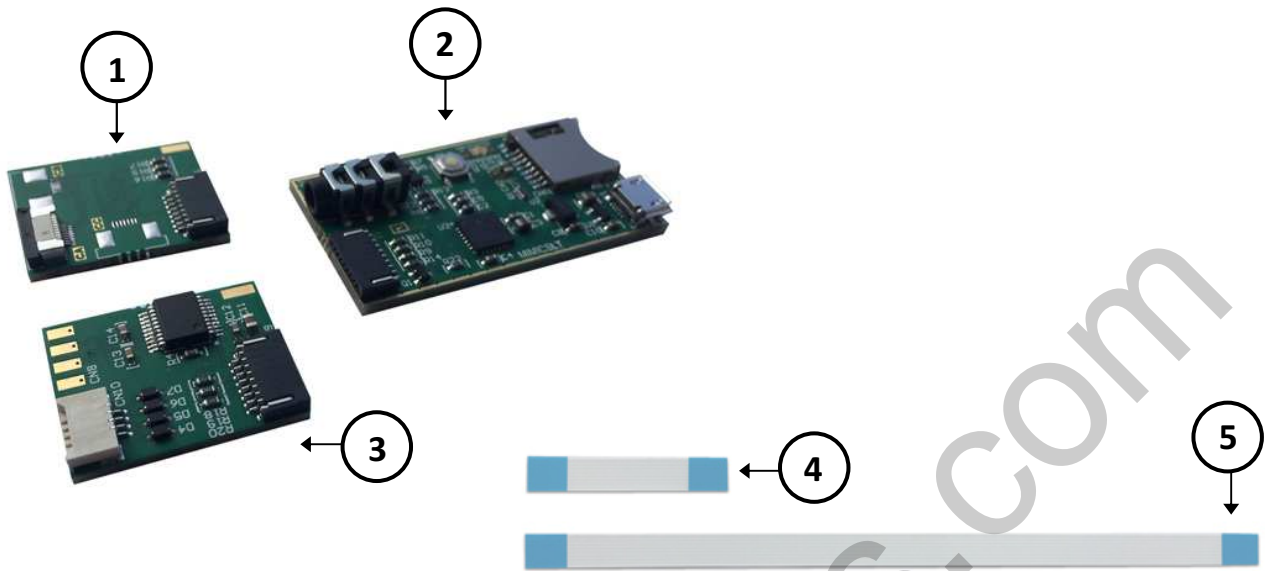
The MimicsLT is a small device that enables you to connect an external compatible resistive or capacitive touchscreen to any Android stick/TV box. With the added functionality of a multimedia interface, the MimicsLT is only device you will need for interacting with your Android device.

Here what these Android devices typically look like.



The great thing about these devices is that they can be quite cheap and easily updateable/upgradable unlike conventional embedded "built in" Android systems. The MimicsLT uses a unique USB connection to be able to connect to the target device.

2. What's in the box



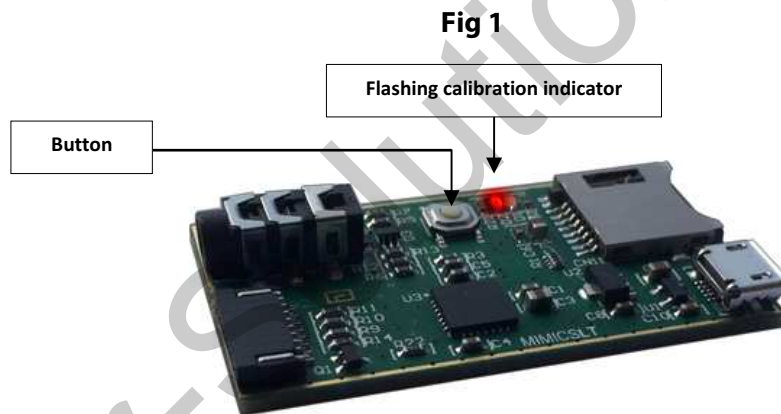
- (1) - Capacitive touchscreen adapter - Used to connect to specific touchscreens
- (2) - MimicsLT main module
- (3) - Resistive touchscreen adapter - This Allows you to connect any size 4-wire resistive touchscreen
- (4) - 2" Ribbon cable - This cable is used to connect between the main module and touchscreen adapters
- (5) - 8" Ribbon cable - This cable is the same as the 2", but simply longer.

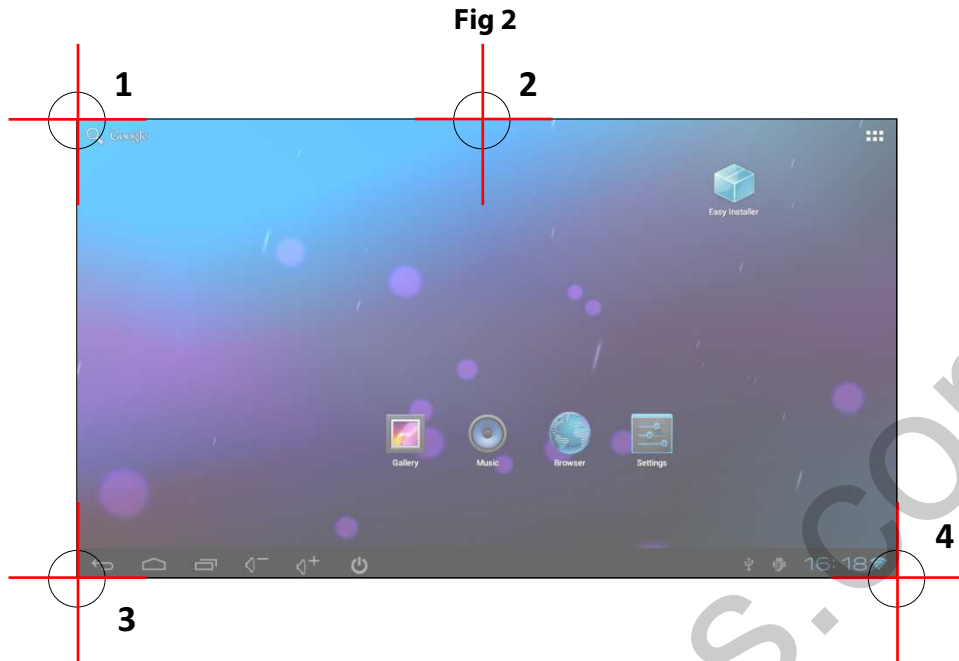
* **Note:** Its highly unlikely, but if you are missing any of these components please contact us at customgadz.com.

** **Note:** Micro USB cable is not supplied since virtually all Android sticks/boxes with have this cable supplied. It just the stock standard Android micro USB cable.

3. Quick start guide

- Ensure you have the latest SDcard firmware installed. If not see "**Section 6**"
- Plug in the target Android stick/box to the external monitor and make sure you can see the Android system displayed.
- When the USB connection is established you should see a green light blinking
- If you are using the capacitive touchscreen kit most likely you will not need to do any calibration, and you should be able to use the touchscreen right away.
- If you are using a resistive touchscreen, or want to scale down the capacitive touchscreen to work with a smaller screen you will need to enter calibration mode. But by default, touching the screen should yield some touch activity.
- Enter calibration mode by pressing the button on the MimicsLT board for about 5 seconds until a red light starts flashing (see fig 1)
- Press each of the 4 points on the edges of the screen (for about 1 second) in sequence as shown in (**fig 2**) As you do this the light pattern will change as you progress.
- A successful calibration will be when you see the yellow light blinking again and now you can use the touchscreen.





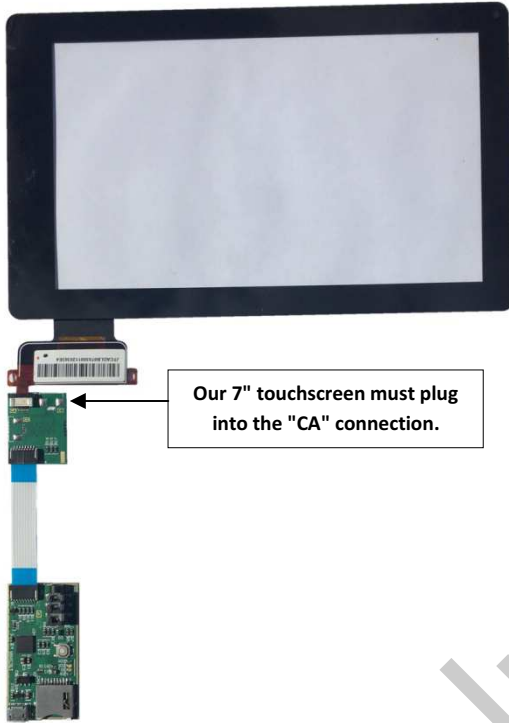
* It's important to press as close to the edge as possible. If using a resistive touchscreen a stylus can help this make the job easier.

* The red light will increase its flashes depending on which point you should press next. i.e. if red light is flashing 2 times per second you should press point #2.

4. Touchscreen configurations

Our touch adapters allow various touchscreens to be connected. Here is a couple examples of how to connect them.

Our 7" Capacitive



Generic 4-wire resistive



***Note:** Our capacitive touchscreen adapters have connections to match specific touchscreens. Do not attempt to plug in a touchscreen that is not supported into any of the connections as damage to the unit can result! This is not issue when using a 4-wire touchscreen as we support all of those.

5. Optional multimedia interface

Not only does the MimicsLT give you touchscreen control of your Android device, but if you connect it to a standard 3.5mm resistive steering wheel/media interface you will be able to expand the functionality of the module. Here's an example of how enable this functionality.

Enabling multimedia interface



Simply connect a 3.5mm steering wheel interface to instantly enable multimedia function to the android device. Currently the default protocol for the interface is SONY. Any Sony compatible interface will work as default without anything needing to be set.

Some of the multimedia functions are as follows:

- Play/Pause
- Volume +/-
- Track >>/<<
- Android Home/back

If you require additional media functions please let us know and we will do our best to add support for it.

***Note:** If you are planning to use the media functions in a vehicle your car might have a CAN-BUS interface. If this is the case you can use a CAN-BUS to resistive interface and set the output to SONY mode.

***Tip:** Briefly pressing the button on the MimicsLT board will also trigger a "Home"/"Back" sequence to the Android device. (Will be implemented shortly)

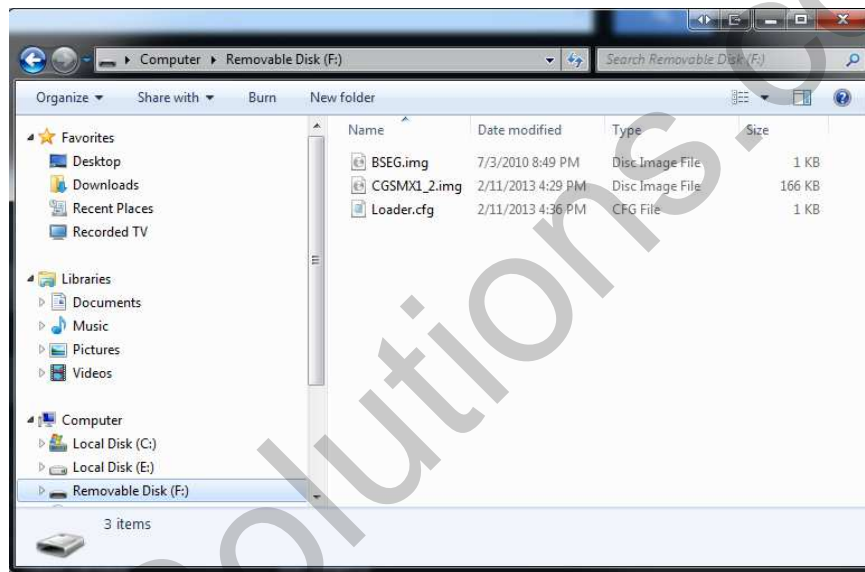
6. Updating The Firmware

Firmware updates allows easy and rapid turnaround low level changes to the core MimicsLT operating system. After loading the MicroSD Card with the firmware files you can plug in the SDcard at any time and it will automatically update!

To upload new firmware.

- Download the latest firmware specific for your device/platform (zip file) from the customGadz website. <http://www.customgadz.com/downloads/>
- Extract the contents of the .zip file and put all 3 files onto a MicroSD card (not supplied). You should see the following 3 files.

Firmware update files



- Inset the MicroSD card into the MimicsX2 main board and wait approximately 7 seconds to the new firmware to be updated.

