

CADILLAC ESCALADE TDL2 (**VIDEO Interface**)



MODEL	ML-PAS-161018
DATE	2017.12.20

Main Spec.

1. Input Spec. (MULTI VIDEO INTERFACE)

- 2 x A/V Input (External video source).
- 1 x CVBS(REAR CAMERA) Input. (Rear camera source)
- 1 x CVBS(FRONT CAMERA) Input. (Front camera source)
- 1 x Analog RGB Input (Navigation System output)
- 1 x Digital RGB Input (Navigation System output)
- 1 x LVDS Input. (Car Command System)

2. Output Spec.

- 2 x CVBS Output (Video out for Installing Headrest Monitor)
- 1 x Audio L/R Output.
- 1 x LVDS Output (LCD Operation)

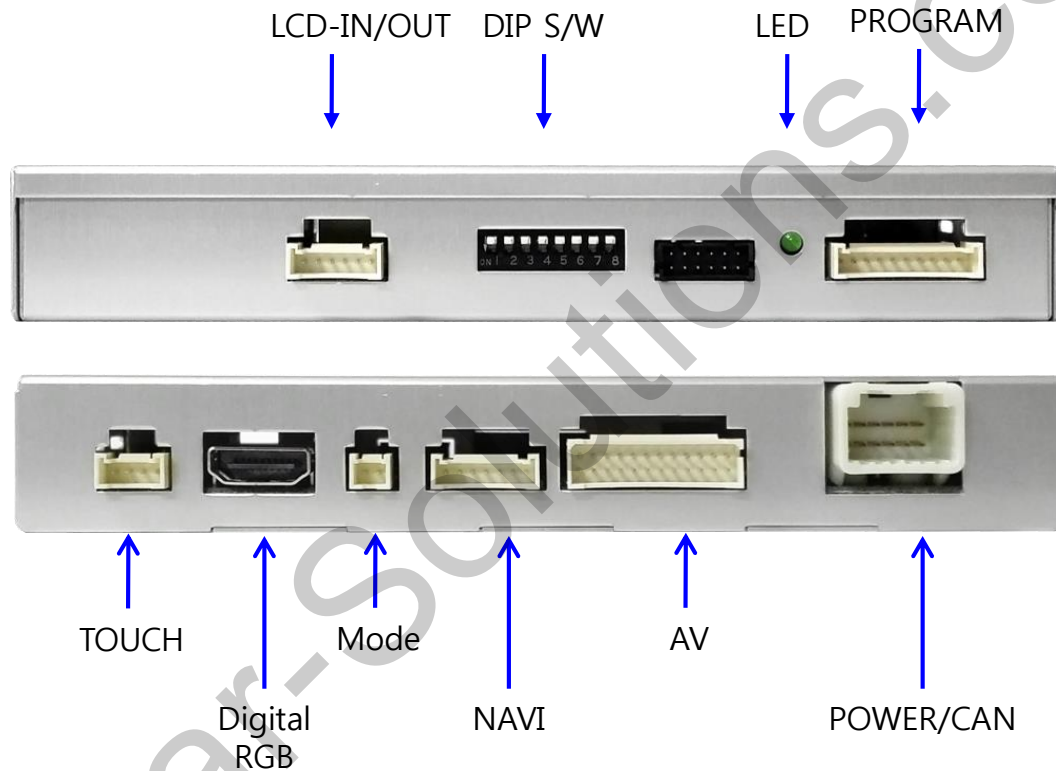
3. Power Spec.

- Input Power : 8VDC ~ 24VDC
- Consumption Power : 12Watt, Max

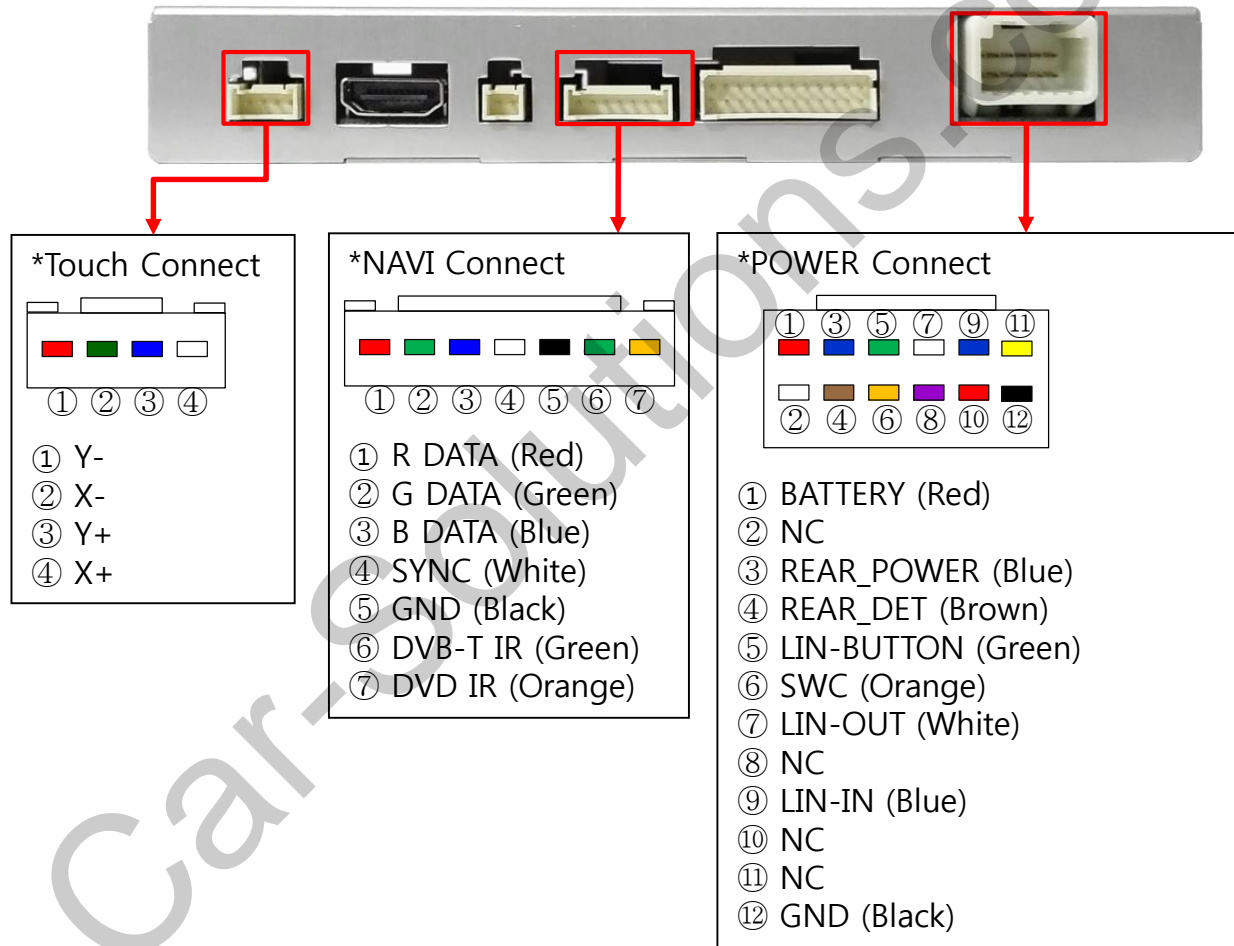
4. Switch Input mode

- Possible to select CAR model while switching mode by DIP S/W
- By button on the Commander in the car via CAN

External Appearance



Connector Pin Assignment



Product Composition



Interface 1 EA



A/V Cable(24pin) 1 EA



Power Cable 1 EA



LVDS Cable 1 EA



RGB NAVI Cable(7pin) 1 EA



OSD Board 1 EA

DIP S/W Setting

* ON : DOWN , OFF : UP

PIN	FUNCTION	DIP S/W Selection
1	NAVI	ON : Not Used OFF : Used
2	AV1 (DVB-T)	ON : Skipping Video OFF : Display
3	AV2 (DVD)	ON : Skipping Video OFF : Display
4	N.C	
5	N.C	
6	CAR type SEL	Right Picture
7		
8		

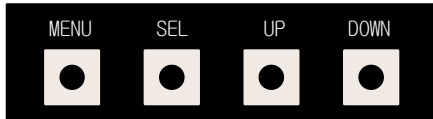
* DIP S/W Example



ESCALADE 2016~
CTS 2014~

OSD(On Screen Display) Control

OSD Control Board



MENU	Push -> OSD menu On/Off
SEL	Item Selection, Value Selection
UP	Item up Increase selected value
DOWN	Item down Decrease selected value

Mode State

MENU	Config	NAVI
Config	NAVI-RGB	KD900(WVGA)
Option	NAVI-AV	Default
Image	DVD	ELT-980XU Slim
Screen	DVB-T(IMB)	ELT-DVBT20
Parking	BlackBox	Default

First Menu Second Menu Third Menu

OSD(On Screen Display) Control

First Menu	Second Menu	Third Menu	Action
Option	RearCam-Type	OEM	Original Camera
		ExtDevice	Use aftermarket Rear camera
	RearCam-Power	ON	Rear camera get +12V consistently
		AUTO	Rear camera get +12V when reverse gear on
		OFF	Shut out the power supply.
	FrontCam-Type	OEM	Original Camera
		ExtDevice	Use aftermarket Front camera
	FrontCam-Power	ON	Front camera get +12V consistently
		AUTO	Front camera get +12V when reverse gear on
		OFF	Shut out the power supply.
	RearCam-RcvOpt	ON	Show Frontcam 25sec after rear mode.
		OFF	Default
	Reset	Excute	Option Menu all Reset

OSD(On Screen Display) Control

NAVI-RGB menu

First Menu	Second Menu	Third Menu	Action
Image	Brightness		Adjust the value of brightness
	Contrast		Adjust the value of contrast
	Color-RED		Adjust the value of RED
	Color-GREEN		Adjust the value of GREEN
	Color-BLUE		Adjust the value of BLUE
	Reset	Excute	Option Menu all Reset

DVD,DVB-T(DMB),NAVI-AV,REAR,FRONT menu

First Menu	Second Menu	Third Menu	Action
Image	Brightness		Adjust the value of brightness
	Contrast		Adjust the value of contrast
	Saturation		Adjust the value of Saturation
	Hue		Adjust the value of Hue
	Sharpness		Adjust the value of Sharpness
	Reset	Excute	Option Menu all Reset



<< Brightness >>



<< Saturation >>



<< Contrast >>

Mode Change



- For use Navigation, DIP-SW 1=OFF



MENU	ChgMode Opt	NAVI
Config	FrontCam-Det	ExtWire
Option	FrontCam-RcvOpt	<input type="checkbox"/> 0s
Image	AV Out	USER
Screen	B/T Call	On
Parking	ChgMode Opt	Double Long

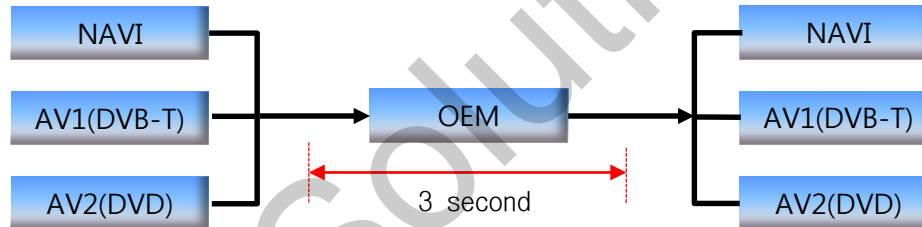
- * HOME icon setting on OSD menu
 - Double : Home icon push double.
 - Long : Home icon push long.

Mode Change

* Use channel Button Control



* Press buttons, back to OEM Screen for 3 second, then return.



- If you use this function, must set "ON"
- Push "BACK" button 7sec, then screen pop up "Auto Return : On" message
- Push 7sec again, then screen pop up "Auto Return : Off" message.



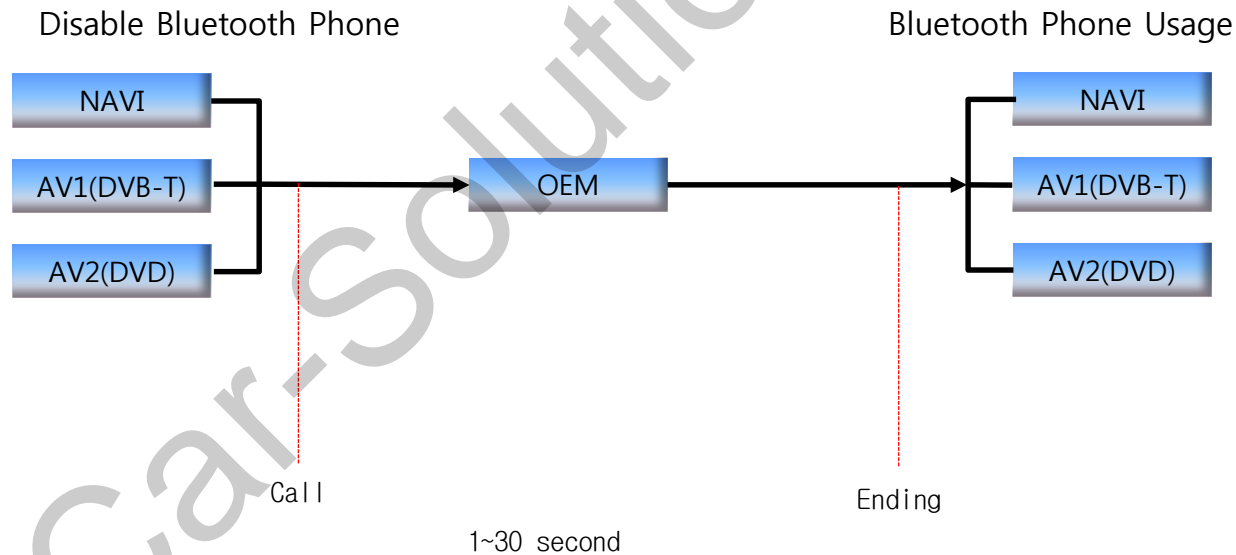
Auto Return : On

OSD(On Screen Display) Control

Bluetooth call function

MENU	B/T Call	NAVI
Config	FrontCam-Det	ExtWire
Option	FrontCam-RcvOpt	<input type="text"/> 0s
Image	AV Out	USER
Screen	B/T Call	On Off
Parking	ChgMode Opt	Double

MENU	B/T Call	NAVI
Config	FrontCam-Det	ExtWire
Option	FrontCam-RcvOpt	<input type="text"/> 0s
Image	AV Out	USER
Screen	B/T Call	On Off
Parking	ChgMode Opt	Double



OSD(On Screen Display) Control

OSD Setting - Parking Mode On/Off



PAS ON



PAS OFF

OSD(On Screen Display) Control

OSD Setting - Parking sensor Display On/Off (OPS)

MENU	OPS Display	REAR
Config	OPS Display	On Off
Option	Warnings Lang	English
Image	Horizontal	50
Screen	Vertical	50
Parking	Reset	Execute Cancel

MENU	OPS Display	REAR
Config	OPS Display	On Off
Option	Warnings Lang	English
Image	Horizontal	50
Screen	Vertical	50
Parking	Reset	Execute Cancel



OPS OFF



OPS ON

OSD(On Screen Display) Control

OSD Setting - Warnings Language Change

MENU	Parking / Warnings Lang	REAR
Config	OPS Display	English
Option	Line Display	中文
Image	Warnings Lang	한국어
Screen	Horizontal	台灣
Parking	Vertical	Россия

English

Check entire surroundings!

中文

请注意车辆周围环境!

한국어

차량 주변을 전부 확인

台灣

請注意車輛周圍環境!

Россия

Следите за всем окружением автомобиля!

日本

周辺の安全を確認

OSD(On Screen Display) Control

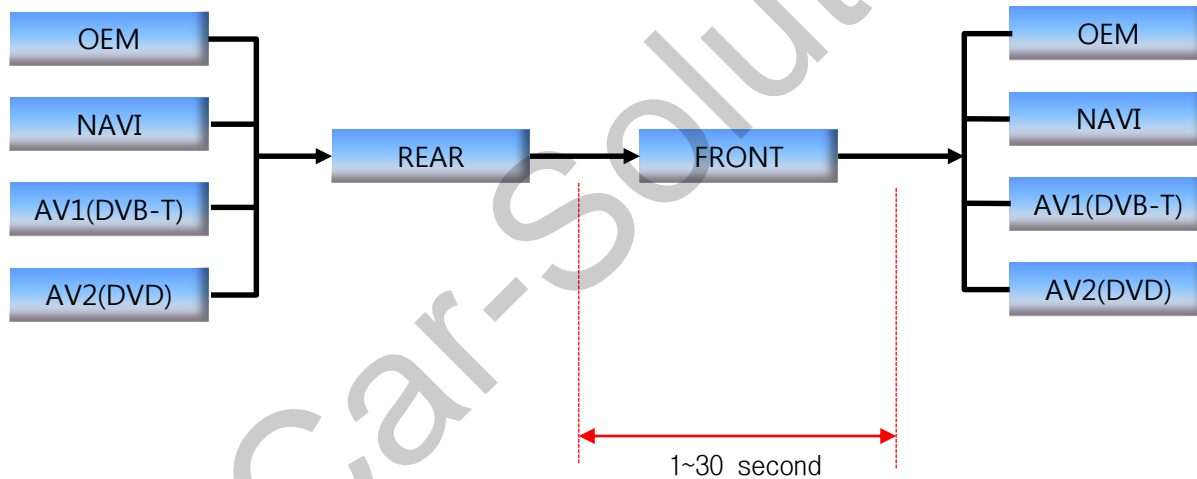
OSD Setting - Front Camera Auto Mode

- Option -> RearCam-RcvOpt -> 0 second = RearCam-RcvOpt menu OFF

1~30 second = RearCam-RcvOpt menu ON & time control

MENU	Option / RearCam-RcvOpt	REAR
Config	FrontCam-Det	ExtWire
Option	RearCam-RcvOpt	<input type="text"/> 0s
Image	AV Out	USER
Screen	Reset	Execute Cancel
Parking		

MENU	Option / RearCam-RcvOpt	REAR
Config	FrontCam-Det	ExtWire
Option	RearCam-RcvOpt	<input type="text"/> 30s
Image	AV Out	USER
Screen	Reset	Execute Cancel
Parking		



OSD(On Screen Display) Control

OSD Setting- Screen Mode

- Horizontal
- Vertical
- Scaler X Up
- Scaler X Down
- Scaler Y Up
- Scaler Y Down

MENU	Screen	MAVI
Config	Horizontal	50
Option	Vertical	50
Image	Scale X Up	50
Screen	Scale X Down	50
Parking	Scale Y Up	50

OSD(On Screen Display) Control

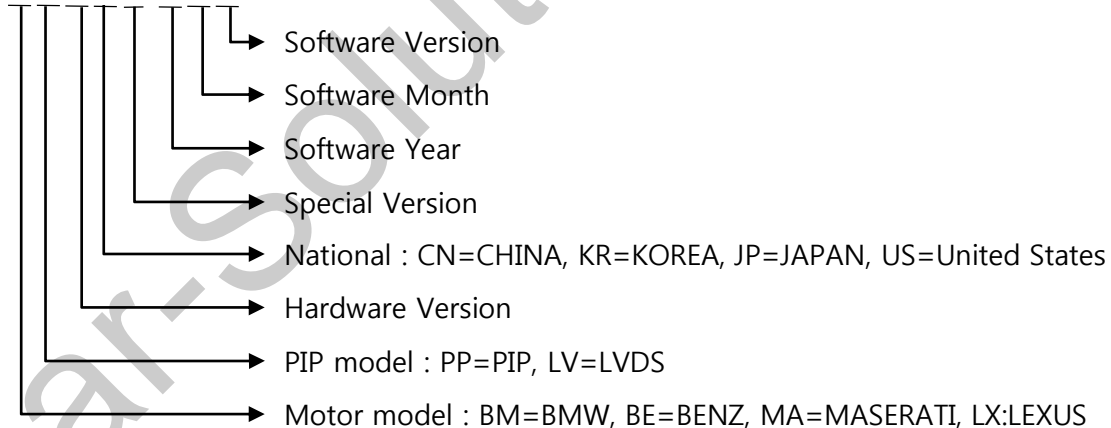
OSD Setting - Utility Mode

MENU	Utility / Factory Reset	REAR
OSD	Factory Reset	Execute Cancel
Utility	Version	BEPP06SGX-130950

- Factory Reset : Execute - Reset All (Setting Default)
- Version : FW Version

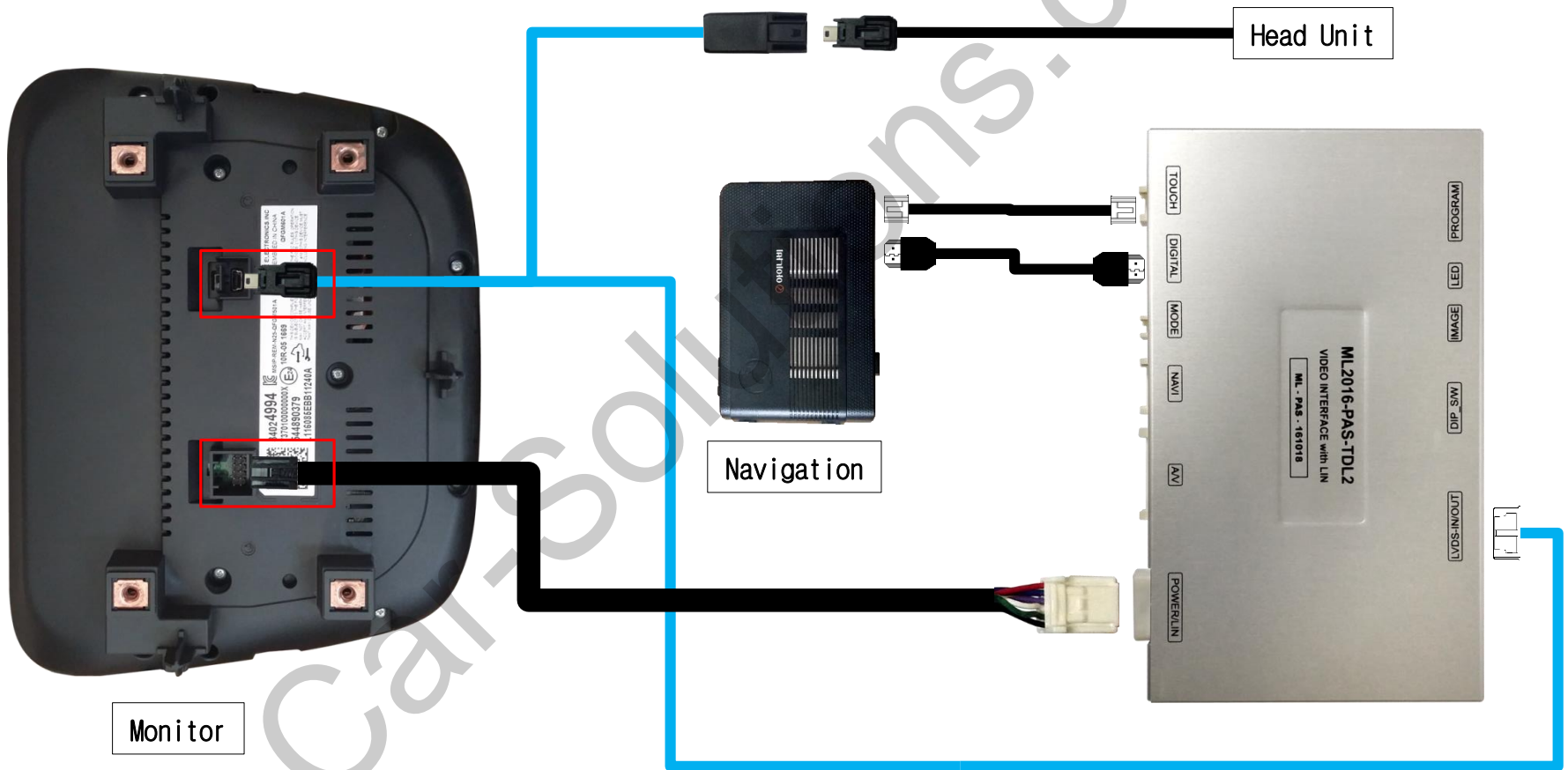
Finish update FW, check the FW version

Last Source : BEPP06SGX-130950



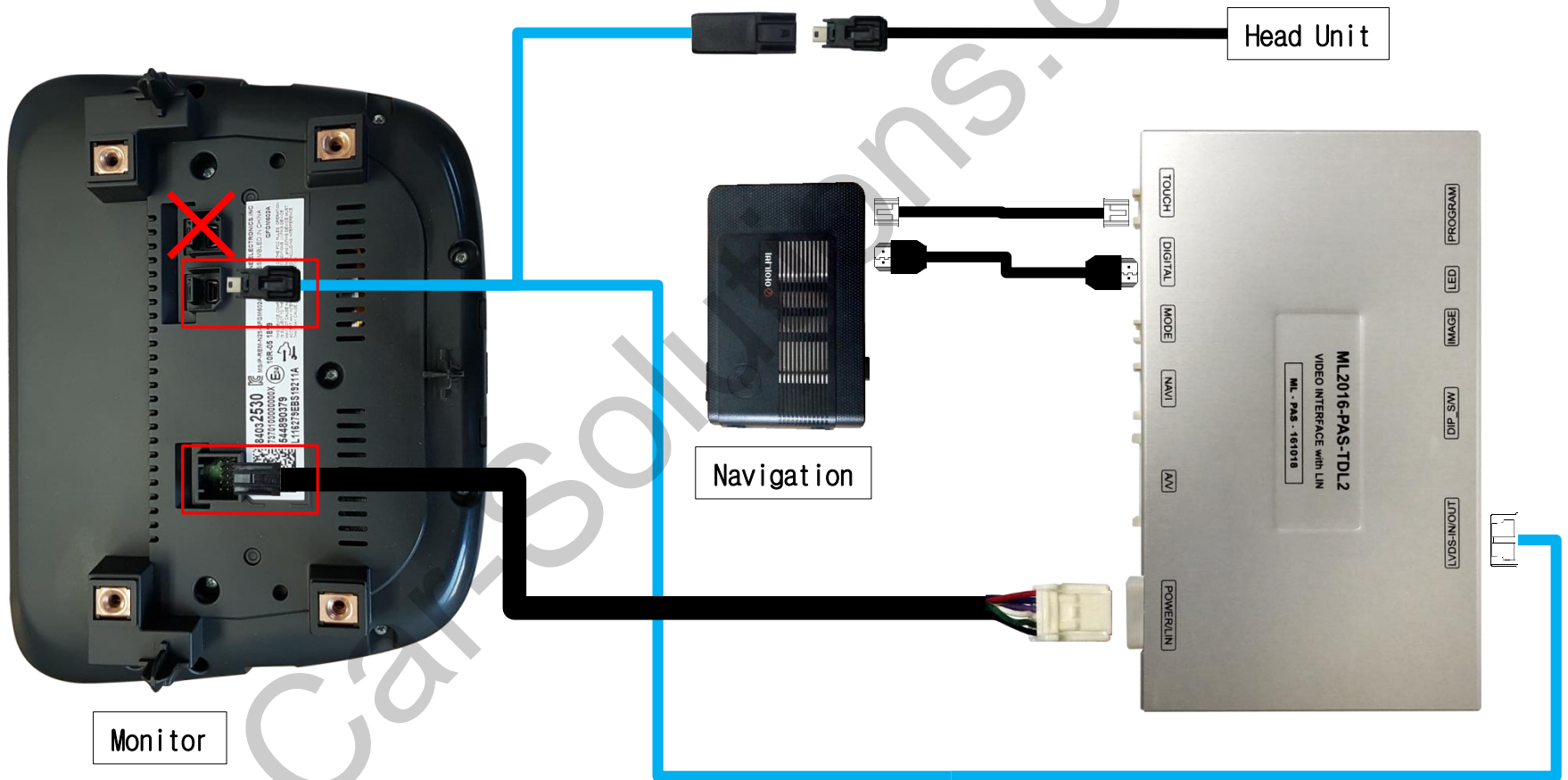
Install Manual (No OEM Navi)

1. Installation LVDS connection
No OEM Navigation

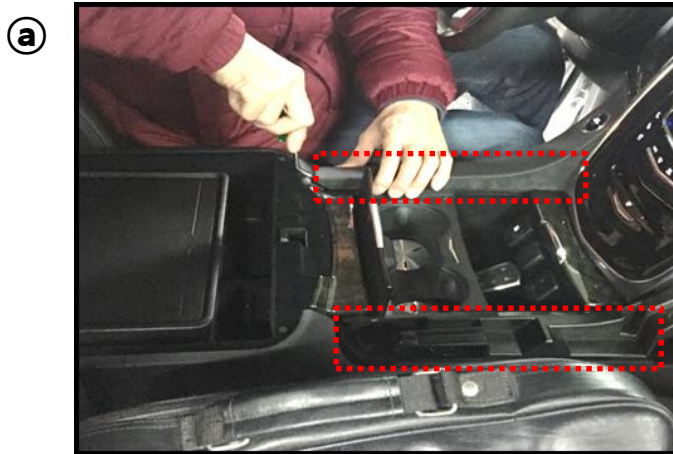


Install Manual (OEM Navigation)

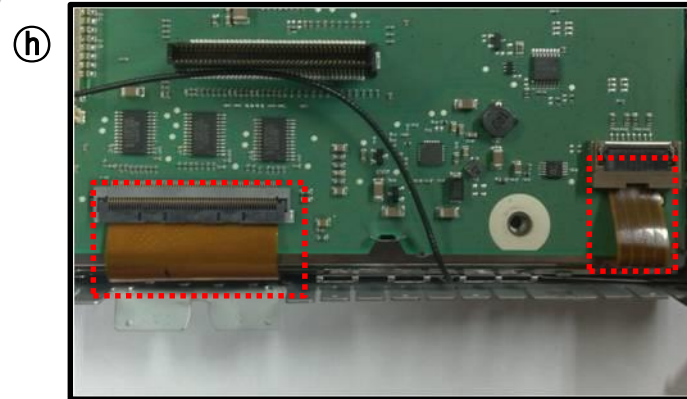
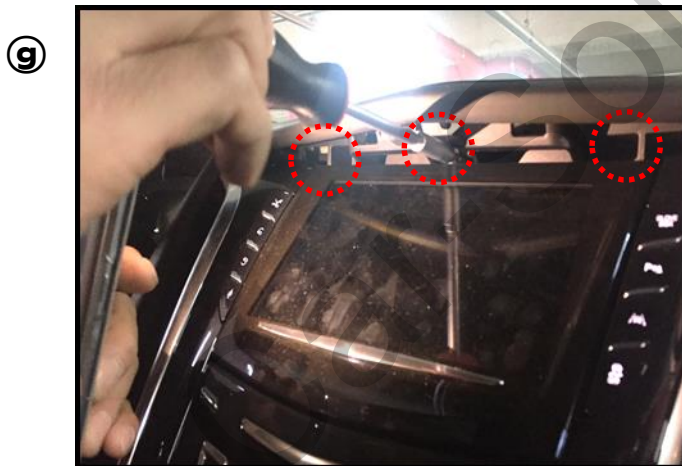
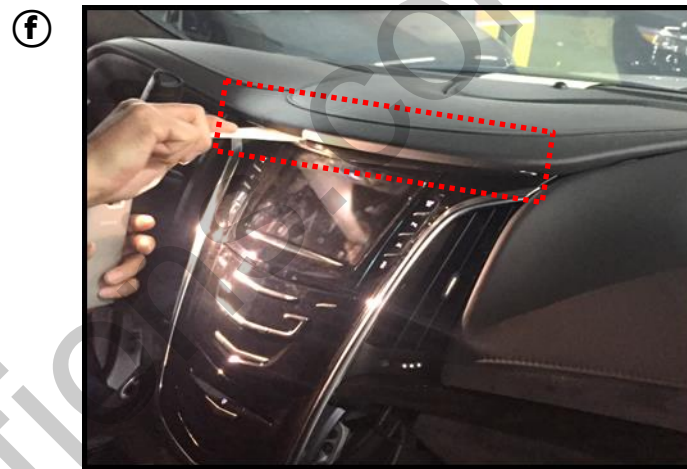
2. Installation LVDS connection OEM Navigation



Install Manual



Take out Back Cover



Take out OEM FPC CABLE

Q & A

1. If Interface has a problem, Please check LED.



- ACC on (12v), If Interface does not have a problem; GREEN LED is blinking every 1 sec..
- RED LED is turn on (not blinking), Interface has a problem.
- RED LED is turn off every 1 sec, there is no input.
- RED LED and GREEN LED both are not turn on, check the CAN or ACC connection.

2. Q : LCD screen black

A : LVDS Cable problem or, connection problem.

3. When DTV or DVD mode, cannot control with I-Drive

- Check IR cable, and DTV or DVD device' s ground cable and Interface ground cable join together with using extra cable.
- Check device in OSD menu