

# Video Interface for Porsche Manual



## NET-CDR31 PORSCHE VIDEO INTERFACE FPG&PDC MANUAL

DOC NO : 15/11/04

### 1) COMPATIBLE VEHICLE : PORSCHE CDR31

\*HOW TO SET S/W MODE [ (ON)-Down 0 : ↓ off / (OFF)-Up 1 : ↑ on ]



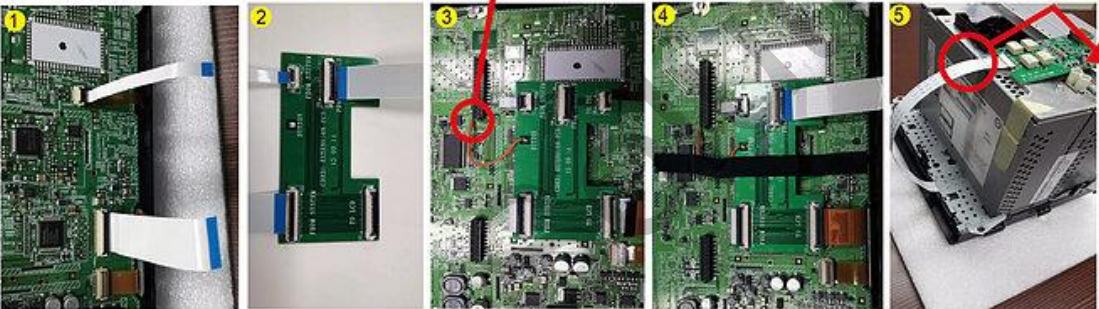
DIP\_SW1 : Navigation On/Off  
 DIP\_SW2 : AV1 On/Off  
 DIP\_SW3 : AV2 On/Off  
 SETTING ON THE BY R/C  
 DIP\_SW4 : REAR CAMERA On/Off  
 DIP\_SW5,6,7,8 : X  
 DIP\_SW9,10 : On

### 2) HOW TO SWITCH REAR CAMERA:

AFTER CONNECT COMAND CABLE AND CAN,  
 DO NOT USE VACK WIRE (SWITCH THE CAN)  
 OUTPUT REAR CAMERA(REAR CAMERA POWER)



### 3) HOW TO INSRAL SERCE BOX : 1 → 2 → 3 → 4 → 5



### 5) HOW TO SWITCH SCREEN



1) PRESS [ ] BUTTON SHORT  
 [ OEM-NAV1->AV1->AV2->AV3 ]  
 SWITCH CONSECUTIVE

### 6) BACK OF COMMAND [ CAN ]



No.9 : CAN LOW BROWN (CAN)  
 No.11: CAN HIGH BROWN / RED (CAN)  
 No.12: GND  
 No.15: B+

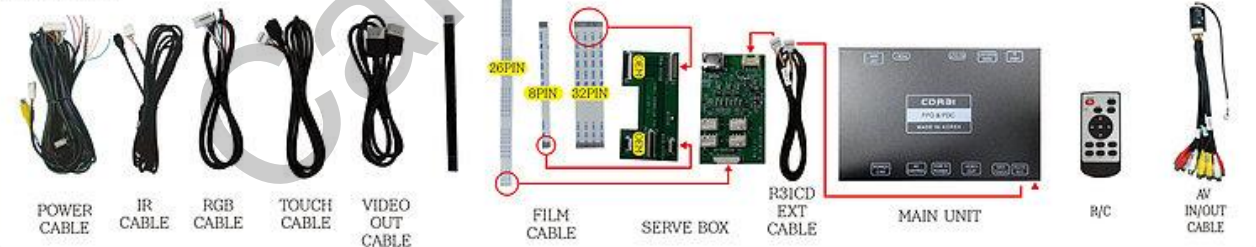
### \*HOW TO ENTER GPS SETTING MODE



PRESS [ ] BUTTON 4 TIMES THAN YOU WILL SEE THE NUMBER 1 ON THE LEFT TOP OF THE SCREEN FROM 1-4,WHEN IT'S NUMBER 4, PRESS THE [ ] BUTTON TO ENTER THE SETTING MODE.



### [ COMPONENTS ]



### ※ DETAILS OF POWER ※

	ACC, B+
	GND
	CAM REAR 12V OUT
	IR
	CAN HIGH - No.11
	CAN LOW - No.9
	REVERSE