

Installation Manual

Video Interface for FIAT 500 Series



• Specification

Compatibility : 2016 FIAT 500 Series, Alfa Romeo 5inch

Components : Interface* 1pcs, Subboard* 1pcs

Interface Input/Output specification

Input : Analog RGB*1, A/V*1, CVBS(Rear Camera)*1

CVBS(Front Camera)*1

Output : To LCD*1

Power Spec

Input Power : 8VDC ~ 18VDC

Consumption : 5WATT

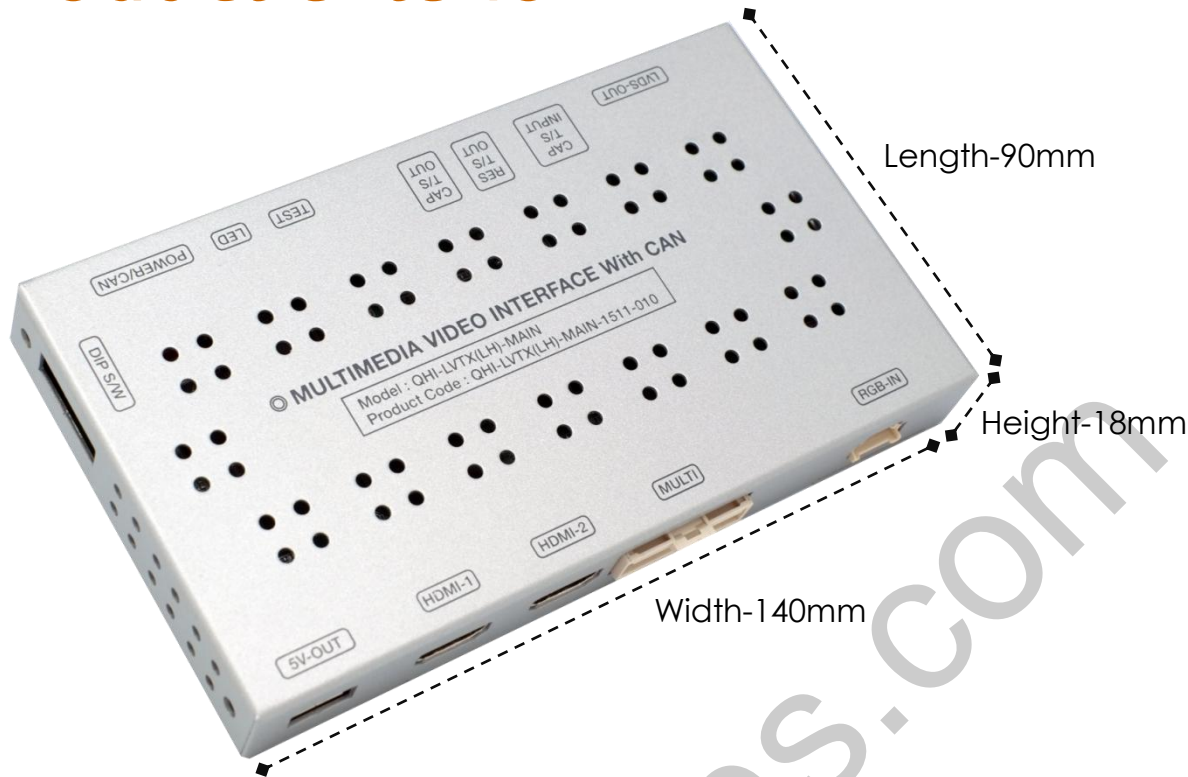
Switch input mode

- External video sources skip function : able to control input videos on and off via DIP switches.
- Able to switch videos via the remote, button switch, and original buttons.
- Able to detect the rear view camera (back up camera) via Lamp or CAN.

• Features

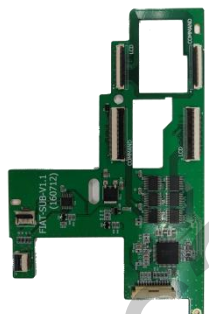
- Control external videos sources (DVD, DTV) via Multi Media Touch
- Adjust external videos screen position
- Check the improved Screen Display (User Friendly Interface)
- Switch modes via original OEM button
- Supply power to rear view camera (Back up camera)
- Offer Dynamic Pas(Parking assistance system), moving parking line based on the steering wheel movement.

• Product exterior



MODE(Button cable) | IR(IR cable) | POWER(Power cable) | REAR(rear cable) |
RGB-IN-HDMI(Mirroring connection) | RGB-IN-NAVI(RGB Navigation) |
AV IN/OUT(AV cable | TO NAVI T/S OUT(NAVI touch cable) | LVDS-OUT(Subboard)
TEST(No use) | LED | DIP S/W(Dip switch setting)

• Components



Sub board * 1ea
(PCBSUBC0441)



Power * 1ea
(HPOWER0044)



TOUCH * 1ea
(HTOUCH0004)



NAVI * 1ea
(HRGBCA0013)



AV * 1ea
(HAVCAB0002)



LVDS * 1ea
(HLVDSC0047)



FFC * 1ea
(FFCBAL0079)



FFC * 1ea
(FFCBAL0078)



FFC * 1ea
(FFCBAL0072)



R-CAM * 1ea
(HARETC0002)



BUTTON * 1ea
(HARETC0001)



IR * 1ea
(HIRCAB0002)



Remote * 1ea
(REMOTE0001)

DIP SWITCH



※ ON : DOWN / OFF : UP

PIN	Function	Dip S/W
1	RGB mode	OFF : Display RGB(Navi) Mode ON : Skip RGB(Navi) Mode
2	AV1 mode	OFF : Display AV1 Mode ON : Skip AV1 Mode
3	AV2 mode	OFF : Display A/V2 Mode ON : Skip A/V2 Mode
4	Front camera	OFF : Display A/V3 Mode ON : Skip A/V2 Mode
5	Car model	5-OFF 6-OFF : Fiat 500c(Europe version) 5-ON, 6-OFF : Fiat 500x 5-OFF, 6-ON : Alfa Romeo 5-ON, 6-ON : Fiat 500c(Default)
6		
7	Rear Camera	ON : Aftermarket rear camera OFF : OEM rear camera
8	No use(OFF)	

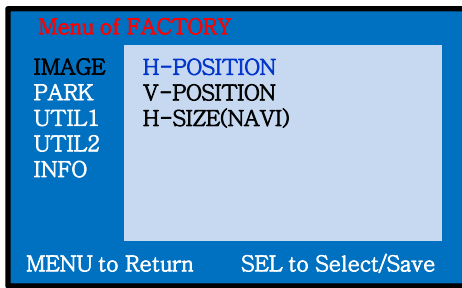
※ Please make sure to disconnect and reconnect the power cable after changing the dip switch setting. Otherwise, new dip switch setting will not be applied.

Remote Control



Key	Function
POWER & PIP	No use
MENU	Activate FACTORY mode
OK	Select, Changing image display
▲	Move up
▼	Move down
◀	Move left(Access to the factory mode if you press this button more than 2 seconds)
▶	Move right (Activate the data reset if you press this button more than 2 seconds)

• Factory Setting

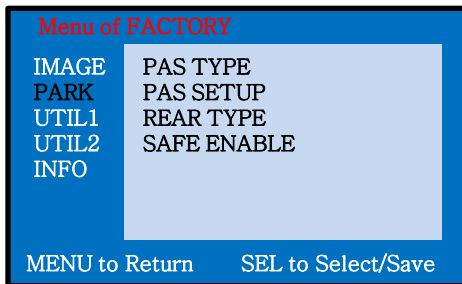


Adjust the position and size of image

H-POSITION : Move the image horizontally

V-POSITION : Move the image vertically.

H-SIZE(NAVI) : Adjust the size of navigation image horizontally

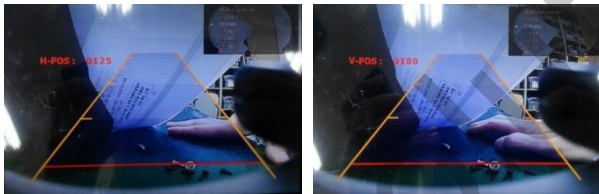


Setting for rear camera

PAS TYPE : Parking guideline setting

- NOT USED : No use parking guideline
- PAS ON : Selecting Dynamic parking guide line
- PAS OFF : Selecting fixed parking guide line

PAS SETUP : adjusting the position of the parking guideline



<H-POSITION>

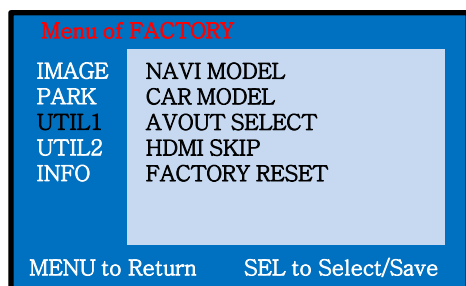
<V-POSITION>

REAR TYPE : Choose rear camera recognition

- * LAMP - Detecting the rear view camera via rear lamp (Installer must connect "Rear-C" cable of the power cable to the rear lamp of the car.)
- * CAN - Detecting the rear view camera by CAN signal (Installer must connect "CAN" cable of the power cable to the "CAN" cable of the car.)

SAFE ENABLE : Able/unable to display the image of external modes while driving(Default: Off)

• Factory Setting



Select Navigation&Car model

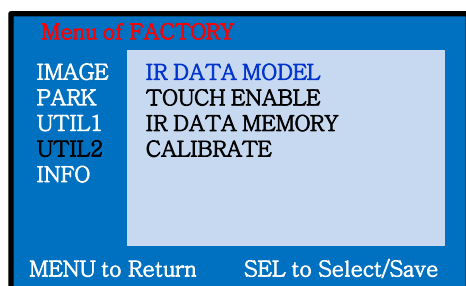
NAVI MODEL : Select RGB Navigation model

CAR MODEL : No use

AVOUT SELECT : Select background mode sound
via Car Aux(AV1, AV2, Default)

HDMI SKIP : Able to skip HDMI mode

FACTORY RESET : FACTORY mode reset.



Setting for other options

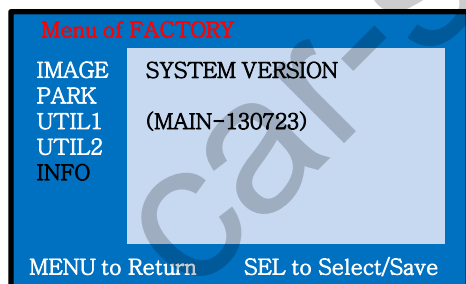
IR DATA MODEL : Resister IR Memory of DVD, DTV
(Default, User)

TOUCH ENABLE : Activate/Deactivate
UI remote touch

IR DATA MEMORY : Enter Remote values
of DTV, DVD

CALIBRATE : Activate Touch calibration

✖ Refer to IR manual for IR settings



Able to check the version of product

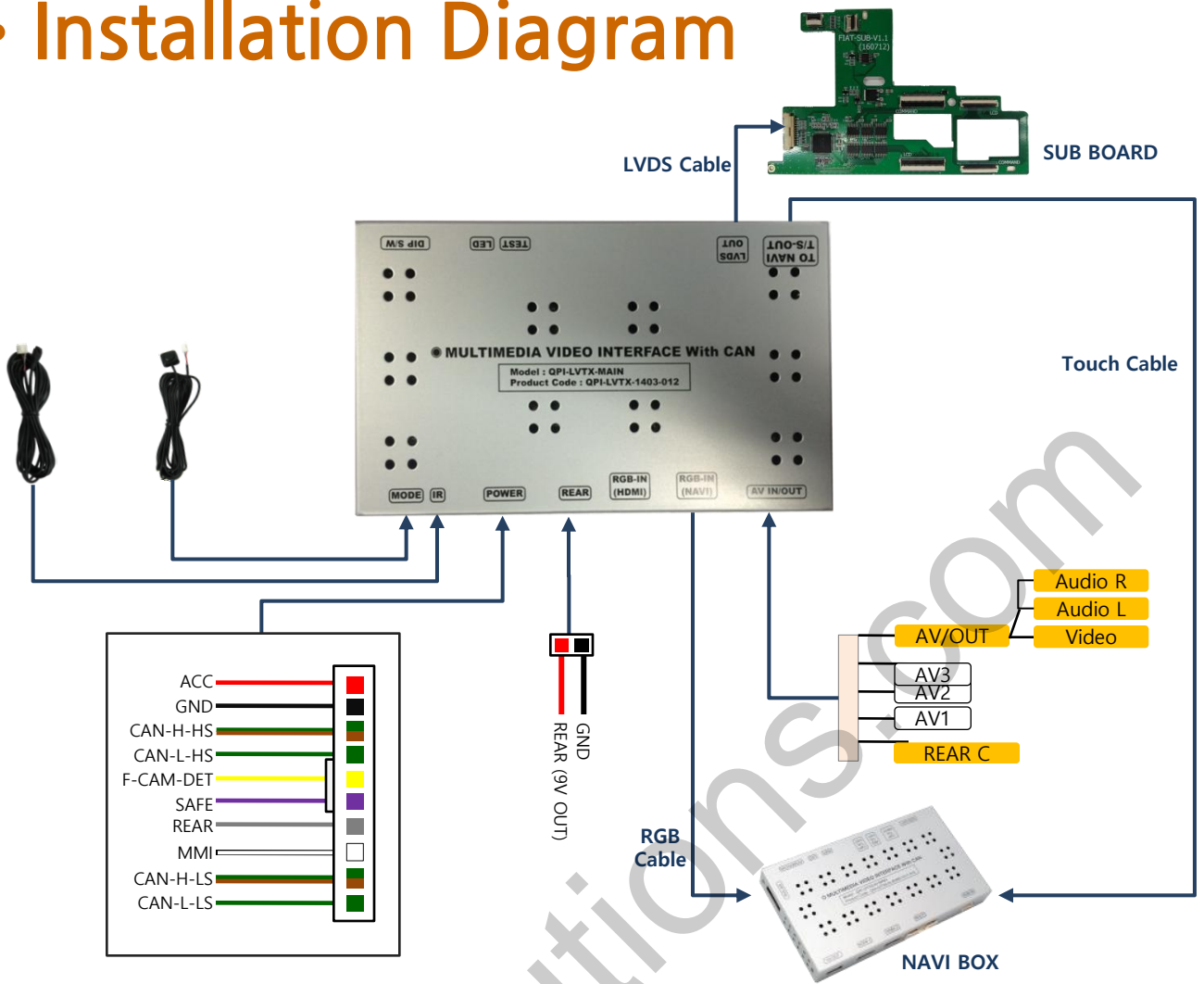
- ※ Long press - Activate the front camera
(Front camera image will disappear 10 seconds later)



- ※ Long Press - Mode switch (RGB→AV1→AV2→F-CAM)
Short Press - Return to OEM mode

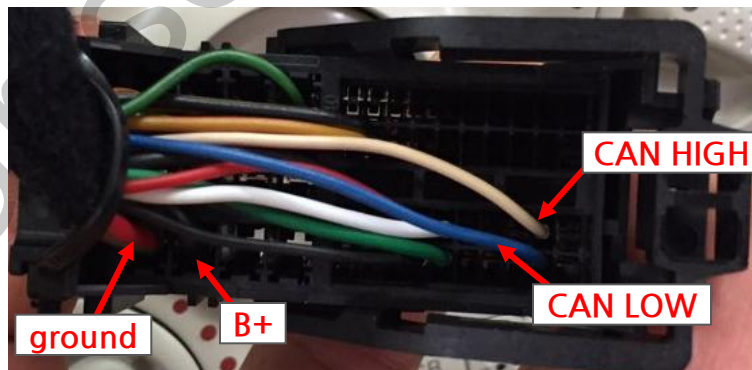
- ※ Return to OEM mode if other buttons are pressed

• Installation Diagram



• CAN / ACC wire connection

※ Find OEM cables behind the command



※ Connection

- Connect Supplied CAN-H-HS wire(Green+Brown) to OEM CAN HIGH wire(White)
- Connect Supplied CAN-L-HS wire(Green) to OEM CAN LOW wire(Blue)
- Connect supplied ACC wire(Red) to OEM B+ wire(Black)
- Connect supplied GND wire(Black) to OEM Ground (Red+Brown)

※ Cable position might be different based on certain car models but the color of wires is same

• Subboard Monitor Connection

1



Disassemble the monitor

2



Remove the original FFC cable in a circle

3



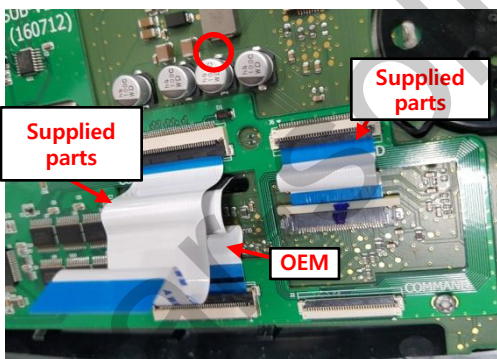
Put the supplied subboard on the top of PCB board and assemble bolts in marked places (Use OEM bolts)

4



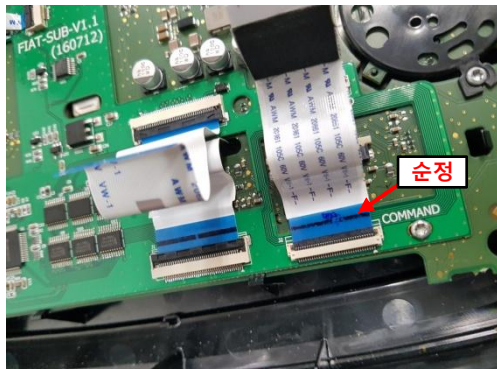
Connect touch cable as shown above

5



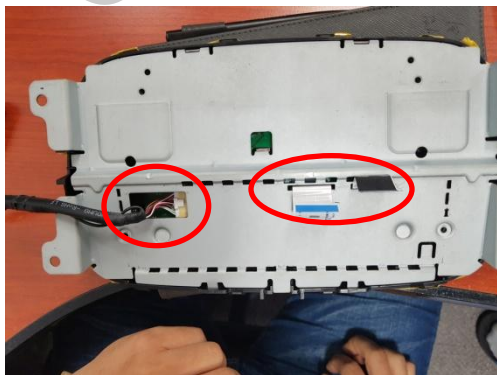
Connect FFC cable as above

6



Connect the original FFC cable which is removed from NO. 2 Instruction to the marked place

7



Take out the FFC&LVDS cables from marked holes

• Trouble shooting

Q. I cannot change mode

A. Check connection of Ground cable and IR Cable. Check LED lamp is on, if not check connection of POWER cable.

Q. All I got on the screen is black.

A. Check second LED lamp of the interface is on, if not, check A/V sources connected are working well.
(Second lamp indicates AV sources connected works well.)
Check interface connection has been done well.

Q. Displayed image color is not proper (too dark or unsuitable color)

A. Press ► button on the remote control for 2 seconds and check how it goes, if it does not work, inform to manufacturer.

Q. I cannot watch the rear camera on the screen

A. Set the DIP switch #7 as state "ON".

Q. Set mode not appear

A. Check DIP Switch.

Q. OEM image is not displayed.

A. Check interface's LCD In/Out cable connection. If the status keeps on, inform to manufacturer.

Q. Screen only displays white color.

A. Check LCD out cable is connected well, if this status keeps, inform to manufacturer.

Q. If the original screen is shown half only after using the handle button for running the PIP function.

A. This is not because of defect but incorrect setting up. Make sure to set up the original monitor function as "split screen"

Q. If no image is shown on screen after connecting CAN wire with Park gear.

A. Go on the "FACTORY MODE", check "UTIL-Rear Select". If "LAMP", change the setting as "CAN" with the remote control. (※ when connecting Rear-C wire of LAMP power cable to Backup lights, Setting should be like this / CAN : if controlling rear camera with CAN wire)