

# Install Manual

## (QVI-G5(1CH)-V7)

---

Update Date	2014.02.04
Model	QVI-LVTX-1CH-V7.1
Firmware Date	

# Warning / Caution



## Warning

- When installing the main unit, do not remove or alter existing vehicle fasteners, including nuts, bolts, screw, clips, and fittings. Never detach, move or alter existing vehicle wiring, including electrical grounds and straps. Alteration of existing vehicle components may make vehicle unsafe to operate. Should be no any electronic devices or magnetic pole around installation place.
- Air bags are vital part of a safety system. Never install main unit in a way which will alter air bag wiring or interfere with air bag deployment. Air bags must function properly in the event of an accident.
- Before installing, check the location of pipe, tank, electrical cables and others.
- Read and follow the instruction manual.
- Wiring location must not interfere driving, get in or out from car.
- Use electrical tape to insulate the ends of all wires, even if they are not used. Proper insulation prevents arcs, shocks and fires.
- When installation is complete, test all vehicle electrical systems to ensure they operate correctly, including lights, horn, brake lights, and emergency flashers.
- According to our sales policy, any problems caused by user's mistake, careless can not be guaranteed.



## Caution

- All steps of installation should be done by well-trained specialist.
- During installation ignition key should be taken off and after all installation finish connect power cable with interface for the last step.
- Do not install the main unit in places where it may be exposed to dew condensation (around the air conditioning hose, etc), or in locations where it may come in contact with water, high levels of moisture, dust or oily smoke
- Install wiring in a manner in which cables will not come in contact with metal parts. The wiring may be damaged by contact with metal parts, resulting in fire and shocks. Avoid all contact with hot surfaces when wiring the main unit. High temperatures may damage wiring, causing shorts, arcing and fires.
- Kindly check all parts are in the box, when receiving the product, if anything missing, inform to the supplier or manufacturer.

# Table of Contents

---

1. Specifications	
1.1 Main Specifications -----	1
1.2 Features -----	2
1.3 System Diagram -----	3
1.4 Components -----	4
1.5 Exterior -----	5
2. Installation	
2.1 Installation Diagram-----	6
2.2 Installation -----	7
3. Settings	
3.1 DIP Switch -----	16
3.2 Remote Control -----	17
3.3 Factory Menu	
3.3.1 Image, Park -----	18
3.3.2 UTIL -----	20
3.4 OSD(ON SCREEN DISPLAY)	
3.4.1 ANALOG RGB MODE -----	24
3.4.2. VIDEO MODE -----	26
4. Trouble Shooting -----	26

# 1. Specifications

---

## 1.1 Main Specifications

1. Car Compatibility  
Volkswagen Golf 7<sup>th</sup> Generation 5inch monitor
2. Components  
Interface\* 1EA  
Sub-board\* 1EA
3. MULTIMEDIA INTERFACE input specification
  - 3 \* A/V input (video external input)
  - 1 \* CVBS(Rear Camera) input
  - 2 \* Analog RGB(Navigation, HDMI)
  - 1 \* LCD input (Car system input)
4. MULTIMEDIA INTERFACE output specification
  - 1 \* LCD output
  - 1 \* Audio output
  - 2 \* CVBS output
5. Power specification  
Input power : 8VDC ~ 16VDC  
Consumed power : 4WATT
6. Switch input mode
  - External display skip function : through DIP switch, can control each video input
  - Through remote control, can change input mode
  - Available to switch mode via Toggle Switch

# 1. Specifications

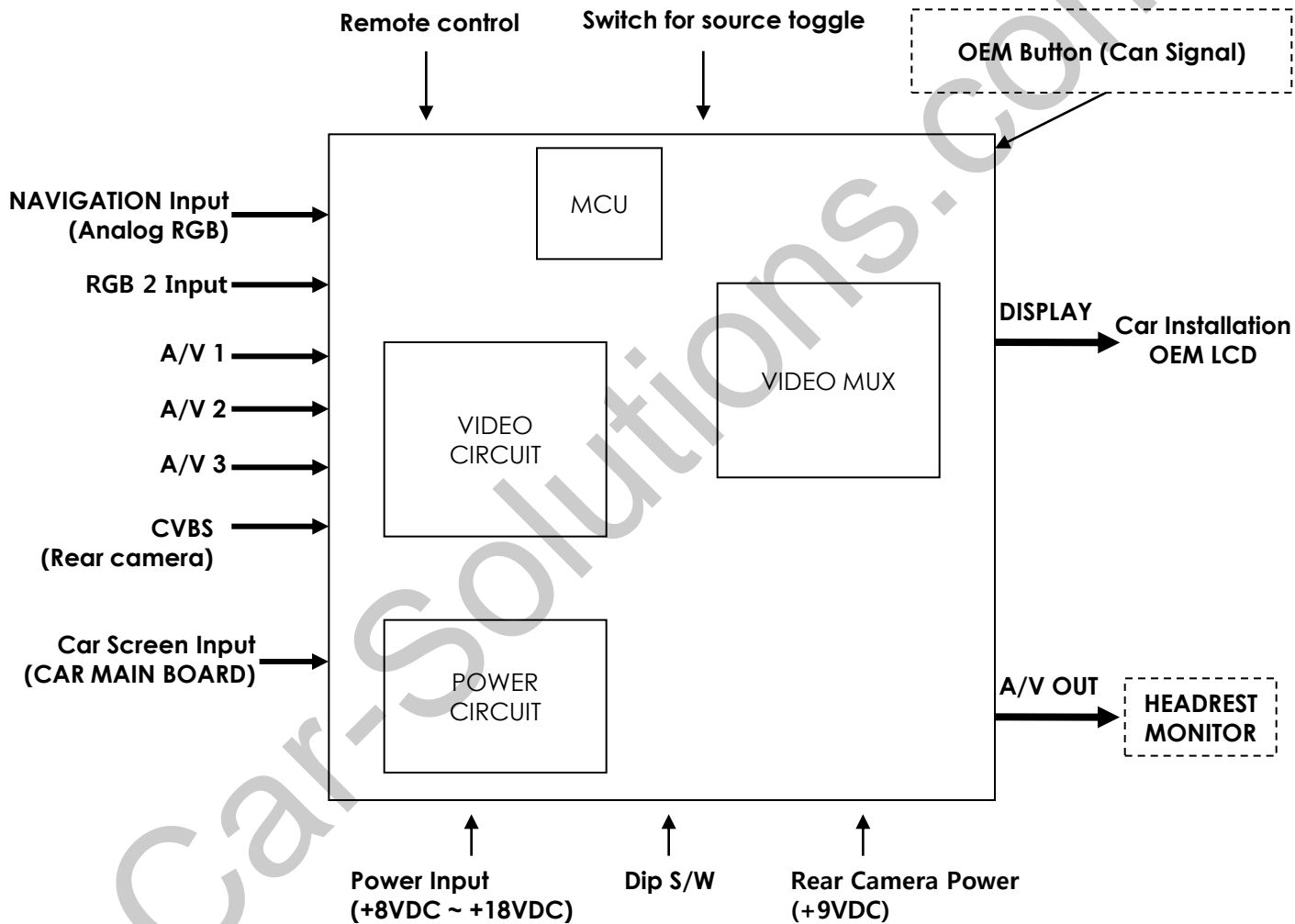
---

## 1.2 Features

- Able to adjust DVD, NAVI display on screen
- Improved Screen Display (user-oriented interface)
- Provide power cable to connect with rear camera

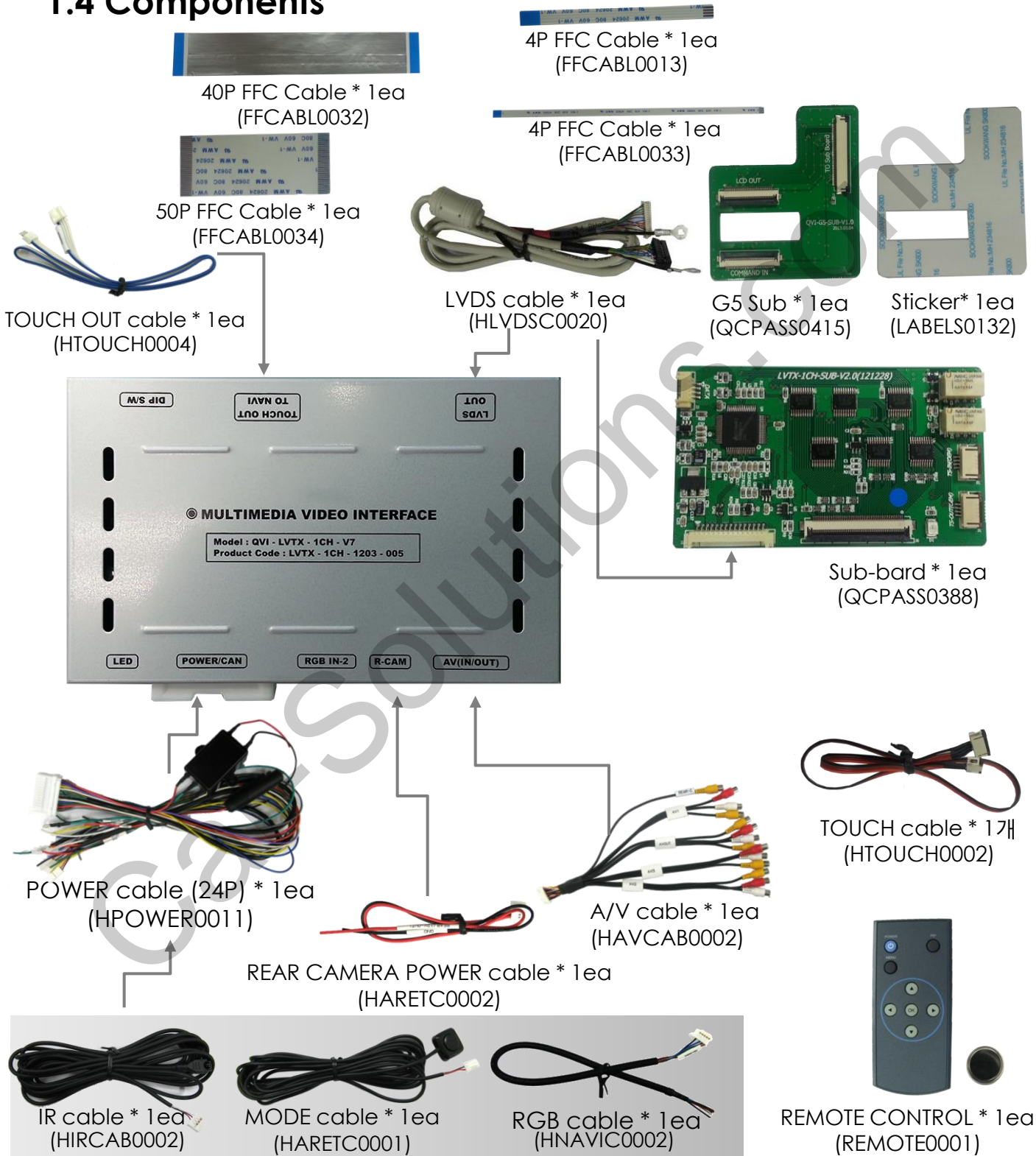
# 1. Specification

## 1.3 System Diagram



# 1. Specification

## 1.4 Components





# 1. Specifications

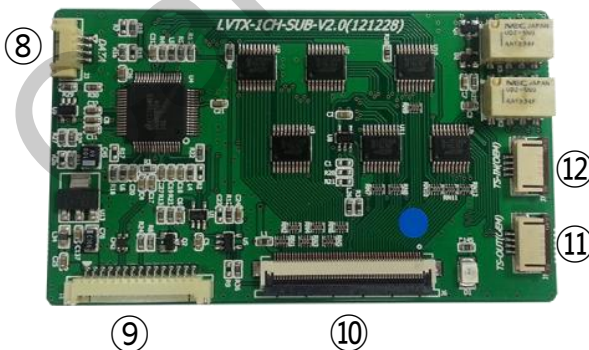
## 1.5 Exterior



### Dimension

width 125mm  
Length 105mm  
Height 21mm

- ① LED
- ② POWER
- ③ RGB IN-2
- ④ R-CAM
- ⑤ AV(IN/OUT)
- ⑥ DIP SWITCH
- ⑦ TOUCH OUT TO NAVI
- ⑧ LVDS OUT



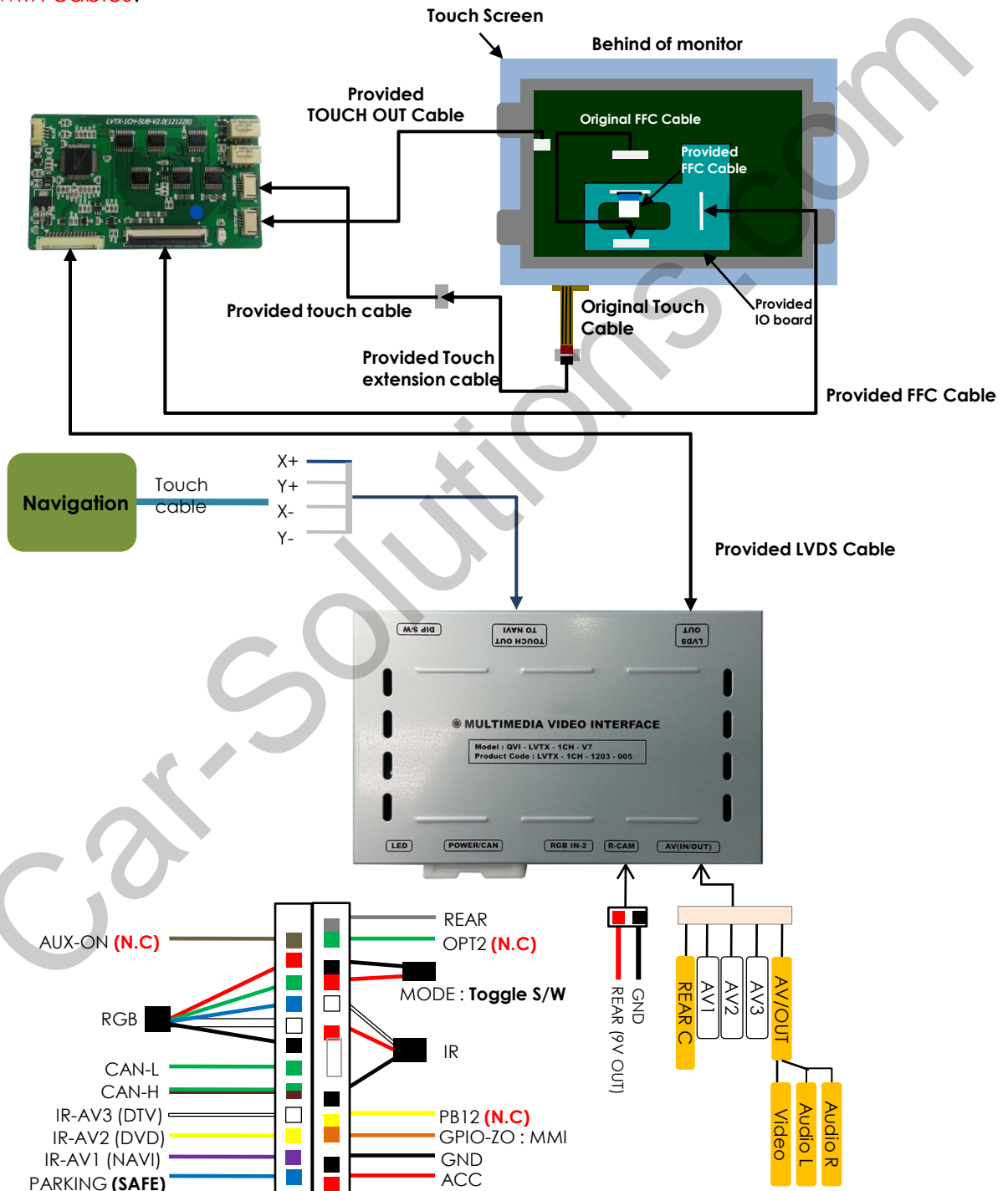
- ⑧ DATA
- ⑨ LVDS IN
- ⑩
- ⑪ TS-OUT(OEN)
- ⑫ TS-IN(OEM)



# 2. Installation

## 2.1 Installation Diagram

※ **Please make sure that** the installation should be carefully conducted to avoid from the damage of a monitor by ESD(Electrostatic discharge) and misalignment while connecting the module of a monitor with cables.



# 2. Installation

## 2.2 Installation

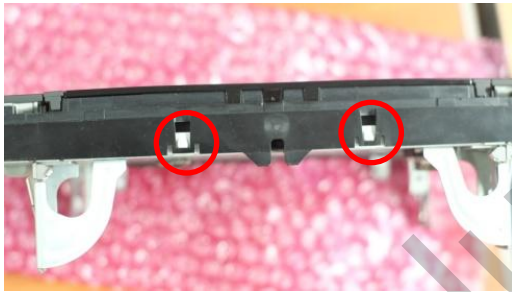


- ① Separate monitor from the car, release the lock (shown above) on the left and right side of it, and separate also monitor and command.

※ **Please make sure that** the installation should be carefully conducted to avoid from the damage of a monitor by ESD(Electrostatic discharge) and misalignment while connecting the module of a monitor with cables.

# 2. Installation

## 2.2 Installation



- ① Separated monitor shown above. Put the lower part to the top, separate board on the back.

# 2. Installation

## 2.2 Installation



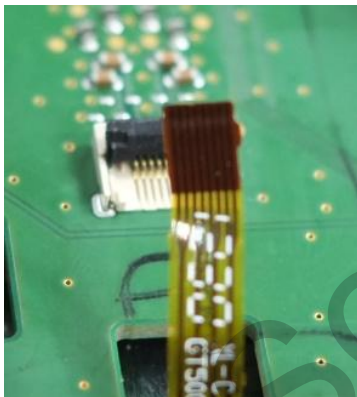
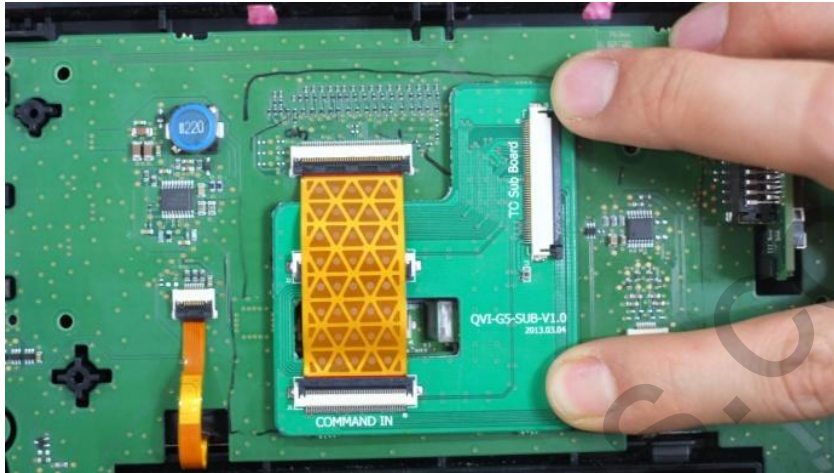
- ① Put offered FFC on the place where original FFC cable put (shown above). After that, put touch sub-board (shown above), connect FFC cable on LCD OUT.

※ **Please make sure that** the installation should be carefully conducted to avoid from the damage of a monitor by ESD(Electrostatic discharge) and misalignment while connecting the module of a monitor with cables.



# 2. Installation

## 2.2 Installation



- ① Connect original FFC with COMMAND IN in touch sub-board. Take out wing part from original touch cable, and connect with touch cable extension.

※ **Please make sure that** the installation should be carefully conducted to avoid from the damage of a monitor by ESD(Electrostatic discharge) and misalignment while connecting the module of a monitor with cables.

# 2. Installation

## 2.2 Installation

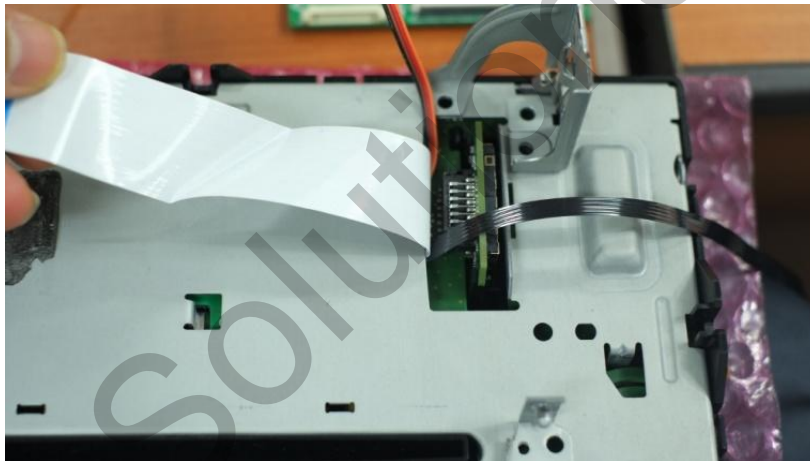
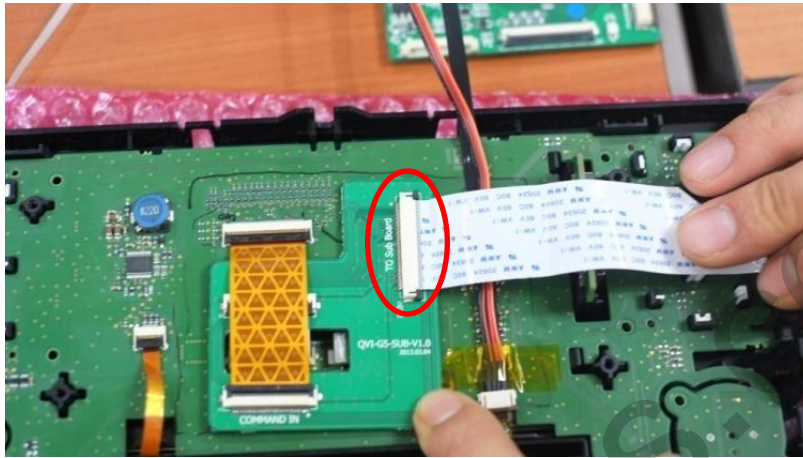


- ① Put offered TOUCH OUT cable on the place where original touch cable was taken, put tape to make it fix. Put touch cable extension on top of it and put some tape.

※ **Please make sure that** the installation should be carefully conducted to avoid from the damage of a monitor by ESD(Electrostatic discharge) and misalignment while connecting the module of a monitor with cables.

# 2. Installation

## 2.2 Installation



- ① Put offered FFC cable on sub-board (written TO SUB BOARD), put together the board (shown picture above), take out the cable through the square hole.

※ **Please make sure that** the installation should be carefully conducted to avoid from the damage of a monitor by ESD(Electrostatic discharge) and misalignment while connecting the module of a monitor with cables.



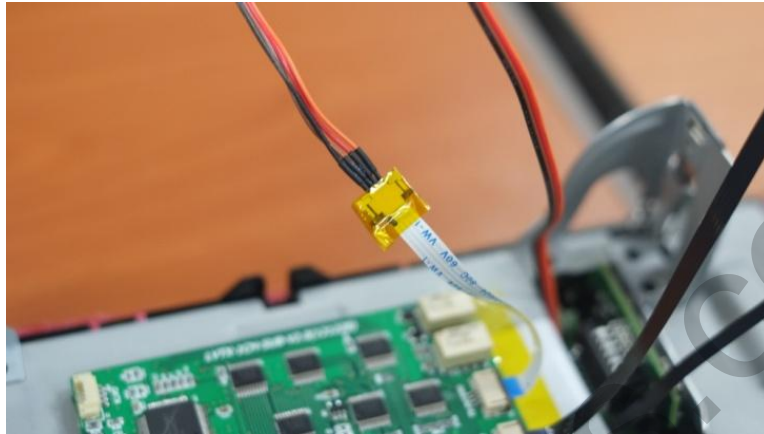
## 2. Installation



- ① After take out FFC cable from the hole (shown picture above), put tape and fold and connect with sub-board (see picture above).

# 2. Installation

## 2.2 Installation



- ① Connect touch cable extension with offered FPC cable and put some tape. Connect TS-IN (OEM) with offered touch cable, and connect offered Touch out cable with TS\_OUT(OEM).

※ **Please make sure that** the installation should be carefully conducted to avoid from the damage of a monitor by ESD(Electrostatic discharge) and misalignment while connecting the module of a monitor with cables.

# 2. Installation

## 2.2 Installation



- ① In order to fix the cable, put tape on the board (refer picture above).
- ② Second picture shows after putting some tapes on the board.

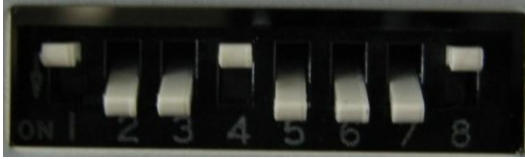
※ **Please make sure that** the installation should be carefully conducted to avoid from the damage of a monitor by ESD(Electrostatic discharge) and misalignment while connecting the module of a monitor with cables.

# 3. Settings

## 3.1 DIP Switch

※ Example DIP S/W usage

- Use input mode : A/V3, Navigation(RGB)
- Use external navigation
- External rear camera



※ ON : DOWN / OFF : UP  
Default : #8 OFF

▷ DIP S/W : 1 → OFF

▷ DIP S/W : 2,3 → ON (A/V1,2 Skip)

▷ DIP S/W : 4 → OFF (A/V3 display)

▷ DIP S/W : 5 → ON

▷ DIP S/W : 6 → ON

▷ DIP S/W : 7 → ON (display external rear cam)

▷ DIP S/W : 8 → OFF

PIN	Function	Dip S/W Selection
1	Displaying RGB input	ON : RGB mode skip OFF : RGB mode display
2	Displaying A/V 1	ON : A/V 1 mode skip OFF : A/V1 mode display
3	Displaying A/V 2	ON : A/V 2 mode skip OFF : A/V2 mode display
4	Displaying A/V 3	ON : A/V 3 mode skip OFF : A/V3 mode display
5		N.C
6		N.C
7	Setup of rear camera use	ON : CVBS4 OFF : MAIN
8	Navigation Skip	ON : OEM Navigation OFF : External Navigation (DEFAULT)

※ Please make sure to disconnect the power cable of the interface and reconnect the power cable again to apply the dip switch setting whenever changing DIP switch. Otherwise, DIP switch setting will not be applied.

# 3. Settings

## 3.2 Remote Control

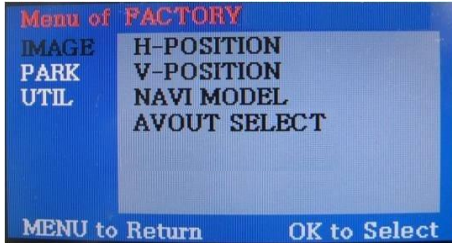


<i>Key</i>	<i>Function</i>
POWER & PIP	Unavailable
MENU	Activating OSD menu
OK	Making a selection, changing image display
▲	Moving upward
▼	Moving downward
◀	Moving leftward (If you press this button 2 seconds long, you can access the factory mode.)
▶	Moving rightward (If you press this button 2 seconds long, you can reset all the data about user environment.)

# 3. Settings

## 3.3.1 FACTORY MODE-IMAGE, PARK

FACTORY mode – Press ◀ button 2 seconds long on the remote control.



### ❑ IMAGE

Adjust navigation position and size

**H-POSITION** : Move display horizontally

**V-POSITION** : Move display vertically

**NAVI MODEL** : DEFAULT, KD900(WVGA), MD7000(WVGA), MYVI(WVGA), PAPAGO(WVGA)

**AVOUT SELECT** : Selecting background sound After returning navigation or original mode

DEFAULT : Selecting AV sound just before changing navigation or original mode from the AV mode

AV 1~3 : Sound of the selected AV source 1~3

### ❑ PARK

**PAS ENABLE** : Selecting whether to display the parking guide line or not on rear gear (default : ON)

**PAS SETUP** : Adjusting the position of the parking guide line

**SAFE ENABLE** : If your car is connected with CAN cable and it is in "ON" state, you can NOT watch DVD or A/V except original image or navigation while driving. At that time the screen get back to the main (default : OFF)

※ After installing rear camera : DIP S/W #7 must be put down (ON).



# 3. Settings

## 3.3.1 FACTORY MODE-IMAGE, PARK

**FACTORY mode** – Press ◀ button 2 seconds long on the remote control.

Go to Factory Menu, choose PAS SETUP, by using OK button change  
H-POS → V-POS

### □ H-POS



In H-POSITION, use ◀, ▶ on remote control, to adjust parking guideline left and right.

### □ V-POS



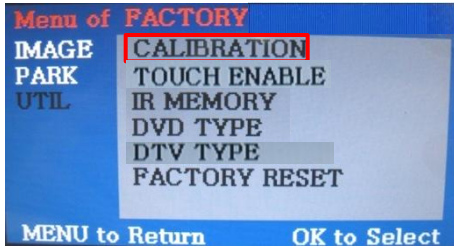
In V-POSITION use ▲, ▼ on remote control, to adjust parking guideline up and down.



# 3. Settings

## 3.3.2 FACTORY MODE-UTIL

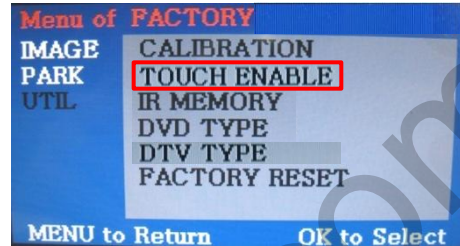
FACTORY mode – Press ◀ button 2 seconds long on the remote control.



### ❑ UTIL – CALIBRATION

Touch Calibration

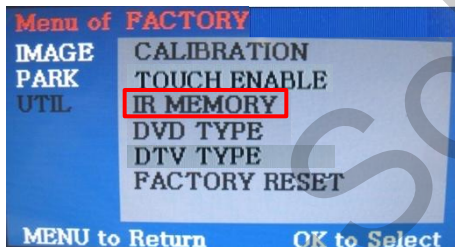
YES / NO



### ❑ TOUCH ENABLE

To select whether to use TOUCH

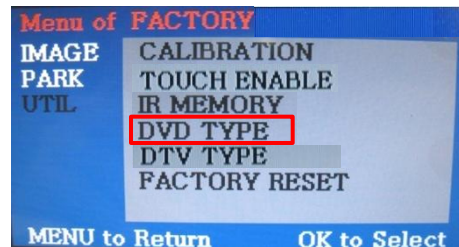
YES / NO



### ❑ UTIL – IR MEMORY

After register DVT, DTV  
Remote control value, Can  
control DVD, DTV by remote  
control UI

※ To use this function, in UTIL-  
DVD / DTV TYPE select USER  
mode



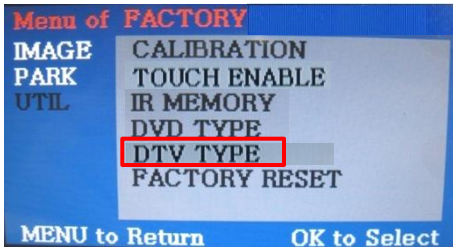
### ❑ UTIL – DVD TYPE

Selecting DVD model

# 3. Settings

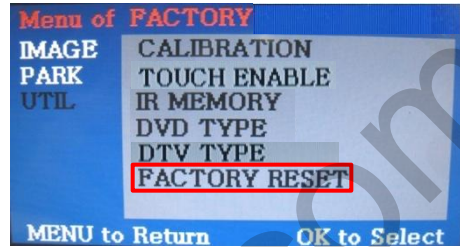
## 3.3.2 FACTORY MODE-UTIL

FACTORY mode – Press ◀ button 2 seconds long on the remote control.



### ❑ UTIL – DTV TYPE

Selecting DTV model



### ❑ UTIL – FACTORY RESET

FACTORY MODE RESET

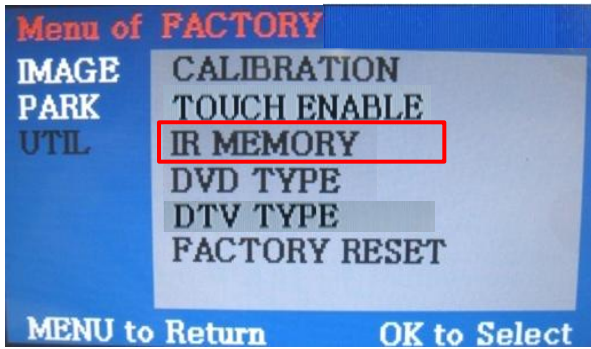
Same functions as press long to right button in remote controller

# 3. Settings

## 3.3.2 FACTORY MODE-UTIL

FACTORY mode – Press ◀ button 2 seconds long on the remote control.

### ❑ UTIL – IR MEMORY



- ① First of all, press ◀ button on remote controller 2 seconds long or press UP→DOWN→UP→MENU button in order to access Factory mode. Choose IR MEMORY on UTIL2.

In IR MEMORY, you can choose AV source of DTV and DVD you want to use.

- ② Picture above shows DVD remote control button value input, select menu you want to save. (To register DVD remote control button value, select IR MEMORY – DTV and follow below instructions.

Example)

- a. After select POWER button on OSD menu, press intended OK button on Remote control
- b. Indicated part above will flicker, and press POWER on DVD remote control.  
(continue to next page)

### What is IR-MEMORY Mode?

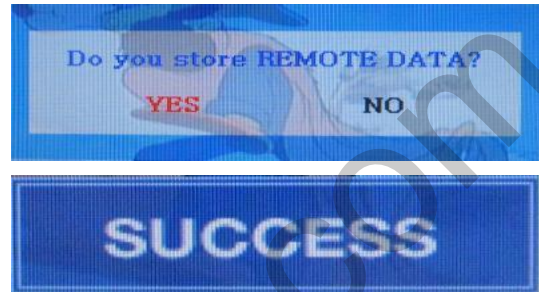
Is to allow MMI and touch screen to control other DVD or DTV (besides the existing,; for example : SANYO, NECVOX) by register remote control value.

# 3. Settings

## 3.3.2 FACTORY MODE-UTIL

FACTORY mode – Press ◀ button 2 seconds long on the remote control.

### ❑ UTIL – IR MEMORY



Instruction> continued...

c. The values that you registered will appear as green text in the marked area on pressing the button. And the values will be saved automatically.

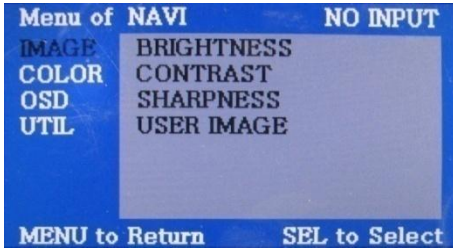
d. Register remain buttons' value in OSD menu like the above-mentioned.

- ③ After register, select "INPUT" button in OSD menu. Then you can see confirmation window as shown above. At the moment, (If data is saved, DVD TYPE and DTV TYPE will be changed to "USER" automatically.)

If you see "SUCCESS" on screen, the data is saved clearly and you can control DVD via touch screen. BUT, you MUST change the option in FACTORY-UTIL-DVD to "USER".

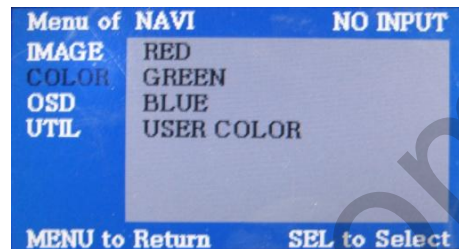
# 3. Settings

## 3.4.1 OSD (On Screen Display) / Analog RGB Mode



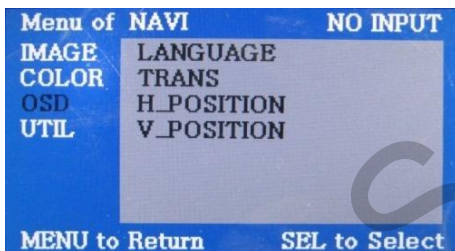
### □ IMAGE

- \* BRIGHTNESS
- \* CONTRAST
- \* SHARPNESS
- \* USER IMAGE



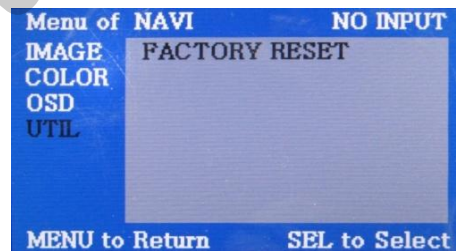
### □ COLOR

- \* RED
- \* GREEN
- \* BLUE
- \* USER COLOR



### □ OSD

- \* LANGUAGE : Set OSD language (only support English and Chinese)
- \* TRANS : Adjust OSD transparency
- \* H-POSITION : Move OSD horizontally
- \* V-POSITION : Move OSD vertically

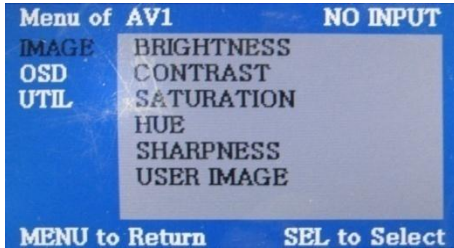


### □ UTIL

- \* FACTORY RESET : Factory reset only for OSD function (unable reset video position)

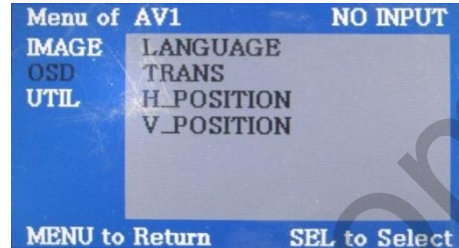
# 3. Settings

## 3.4.2 OSD (On Screen Display) / Video Mode



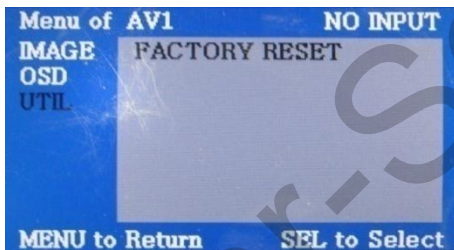
### □ IMAGE

- \* BRIGHTNESS
- \* CONTRAST
- \* SATURATION
- \* HUE
- \* SHARPNESS
- \* USER IMAGE



### □ OSD

- \* LANGUAGE : Set OSD language (only support English and Chinese)
- \* TRANS : Adjust OSD transparency
- \* H\_POSITION : Move OSD horizontally
- \* V\_POSITION : Move OSD vertically



### □ UTIL

- \* FACTORY RESET  
: Factory reset only for OSD function  
(unable reset video position)



# 4. Trouble Shooting

---

**Q. I cannot change mode**

- A. Check connection of Ground cable and IR Cable.  
Check LED lamp is on, if not check connection of POWER cable.

**Q. All I got on the screen is black.**

- A. .Check second LED lamp of the interface is on, if not, check A/V sources connected are working well.  
(Second lamp indicates AV sources connected works well.) Check interface connection has been done well.

**Q. Displayed image color is not proper (too dark or unsuitable color)**

- A. Try to select "INITIAL" in OSD menu, if it does not work, inform to manufacturer.

**Q. I cannot watch the rear camera on the screen**

- A. Set the DIP switch #7 as state "ON".

**Q. Set mode not appear**

- A. Check DIP Switch.

**Q. OEM image is not displayed.**

- A. Check interface's LCD In/Out cable connection. If the status keeps on, inform to manufacturer.

**Q. Screen only displays white color.**

- A. Check LCD out cable is connected well, if this status keeps, inform to manufacturer.

**Q. Show PIP function via handle button, and original screen appear half only.**

- A. This is not because of faulty interface, please check original monitor split function settings.

**Q. After connect CAN cable, set gear "R", video doesn't appear.**

- A. Go to "FACTORY MODE" and check "UTIL-Rear Select". Change "LAMP" settings to "CAN" with remote control.  
※ LAMP : In case of connecting "Rear-C" wire of Power Cable to Rear Lamp in vehicle.  
It may not work on a camera with 12V