

Manual Date : 2016.10.27

Installation Manual

Video Interface for 5inch VW monitor

Model : QPI-LVTX-NCC5



• Specification

Car Compatibility : 2015 Polo 5inch monitor

Components : Interface* 1ea, Sub-board*1ea

Multimedia interface Input/output spec

Input : Analog RGB*2 (Navigation, SMI), A/V*3,
CVBS(Rear Camera)*1

Output : To LCD*1

Power spec

Input power : 8VDC ~ 18VDC

Consumption : 5WATT

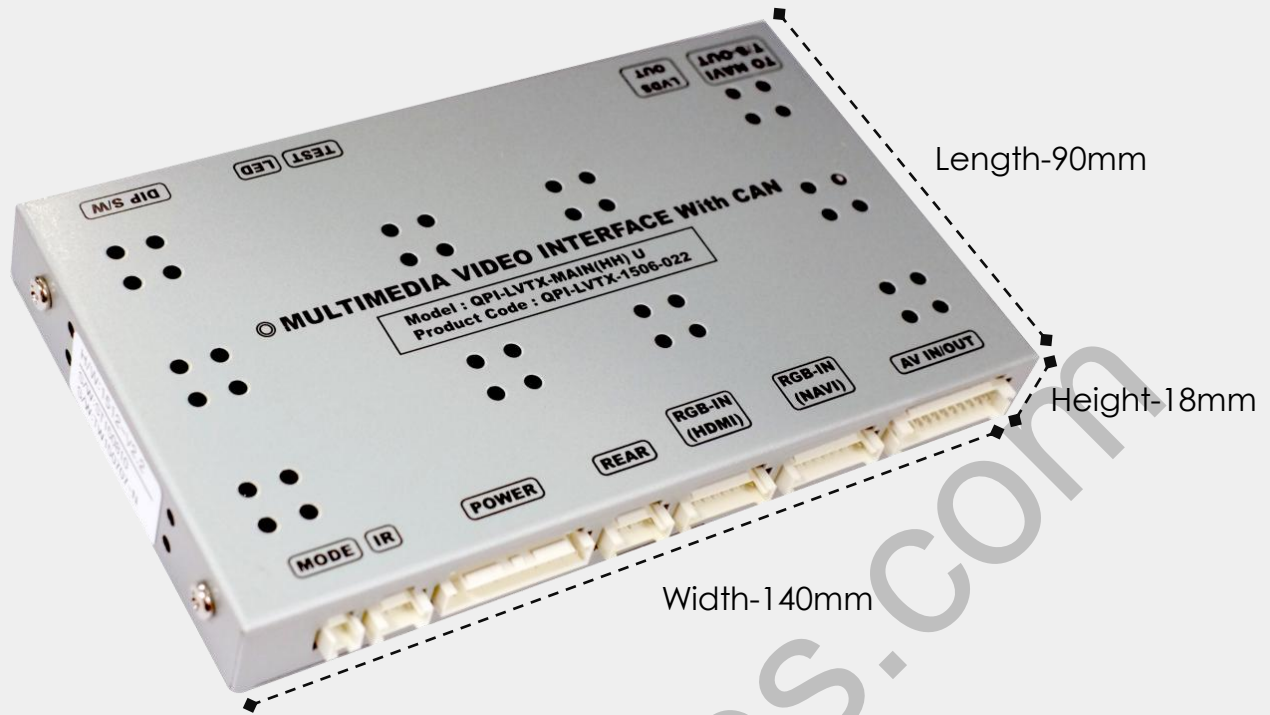
Switch input mode

- External video sources skip function : able to control input videos on and off via DIP switches.
- Able to switch videos via the remote, button switch, and original buttons.
- Able to detect the rear view camera (back up camera) via Lamp or CAN.

• Features

- Control external videos sources (DVD, DTV) via Multi Media Touch GUI
- Adjust external videos screen position
- Check the improved Screen Display (User Friendly Interface)
- Switch modes via original OEM button
- Supply power to connect rear view camera (Back up camera)
- Assist your parking via Dynamic PAS(Parking Assistance System), PDC(Parking Distance Control), moving parking line according movement of steering wheel.

• Product exterior



MODE(Button cable connection) | IR(IR cable connection) | POWER(Power cable connection)
 | REAR(Rear cable connection) | RGB-IN-HDMI(Mirroring device connection)
 | RGB-IN-NAVI(RGB Navigation connection) | AV IN/OUT(AV cable connection) | TO NAVI T/S OUT(NAVI
 touch cable connection) | LVDS-OUT(Sub board connection)
 TEST(No use) | LED | DIP S/W(Dip switch setting)

• Components



Sub-board * 1ea



Bracket * 1ea
(PRESET0378)



Touch board * 1ea



POWER * 1ea
(HPOWER0044)



LVDS * 1ea
(HLVDSC0020)



RGB * 1ea
(HRGBCA0013)



AV * 1ea
(HAVCAB0002)



NAVI TOUCH * 1ea
(HTOUCH0004)



REAR * 1ea
(HARETC0002)



BUTTON * 1ea
(HARETC0001)



IR * 1ea
(HIRCAB0002)



RC * 1ea
(REMOTE0001)

support@car-solutions.com

www.car-solutions.com

DIP SWITCH



※ ON : DOWN / OFF : UP

PIN	FUNCTION	Dip S/W SETTING
1	RGB INPUT MUTE	OFF : RGB DISPLAY ON : Skipping RGB Mode
2	HDMI1 MODE MUTE	OFF : HDMI1 DISPALY ON : Skipping HDMI1 Mode
3	AV MODE MUTE	OFF : AV DISPLAY ON : Skipping AV Mode
4	FRONT CAM MUTE	OFF : Front camera function on ON : Front camera function off
5	NO USE (OFF)	
6	MONITOR SETTING	OFF : Default
7	REAR MODE	OFF : OEM Rear Camera ON : External Rear Camera
8	NO USE (OFF)	

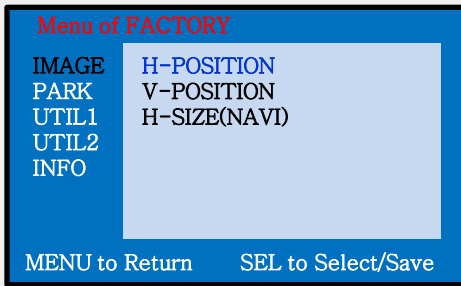
※ Please make sure to disconnect the power cable of the interface and reconnect the power cable again to apply the dip switch setting whenever changing DIP switch. Otherwise, DIP switch setting will not be applied.

REMOTE CONTROL SETTING



KEY	FUNCTION
POWER & PIP	NO USE
MENU	Activating FACTORY MENU
OK	Making a selection, changing image display
▲	Moving upward
▼	Moving downward
◀	Moving leftward (If you press this button 2 seconds long, you can access the factory mode.)
▶	Moving rightward (If you press this button 2 seconds long, you can reset all the data about user environment.)

• Factory setting

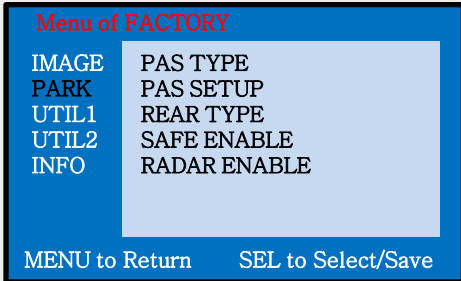


Adjust a current screen position and size.

H-POSITION : Move display horizontally

V-POSITION : Move display vertically

H-SIZE(NAVI) : Adjust the horizontal size of Navigation



Adjust rear view camera setting.

PAS TYPE : Select type of parking guide line

- NOT USED : No use parking guide line
- PAS ON : Selecting Dynamic parking guide line
- PAS OFF : Selecting fixed parking guide line

PAS SETUP : Adjusting the position of the parking guide line



<H-POSITION>



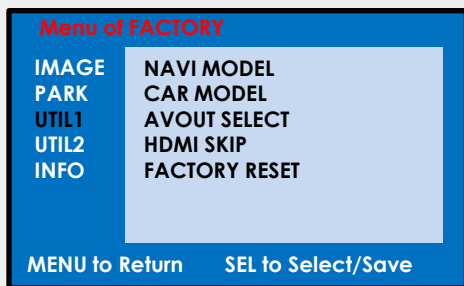
<V-POSITION>

REAR TYPE : Choose rear camera recognition.

- CAN : By connecting to "CAN" cable of the car gear, changing to rear camera mode when shifting into reverse. (Connect "CAN" cable of the power cable to the "CAN" cable of the car gear.)
- LAMP : By connecting to the rear lamp of the car, switch to rear camera mode when shifting into rear. (Connect "Rear-C" cable of the power cable to the rear lamp of the car.)

SAFE ENABLE : If it is enable, RGB, and A/V mode doesn't show up while driving. (Default : OFF)

• Factory setting



Navigation & Car model setting up

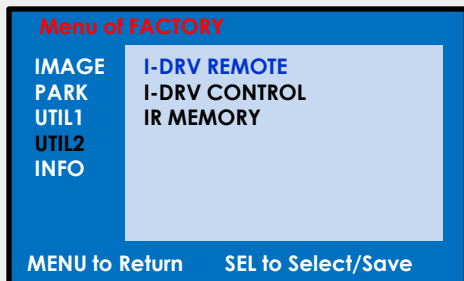
NAVI MODEL : Setting up RGB Navigation.
(Default, QWGA, Q-ROI)

CAR MODEL : Selecting the model of car.
(POLO)

AVOUT SELECT : Selecting background sound
through car AUX. (HDMI1, HDMI2, AV)

HDMI2 SKIP : Skipping HDMI mode when
switching modes.

FACTORY RESET : Reset the factory setting.

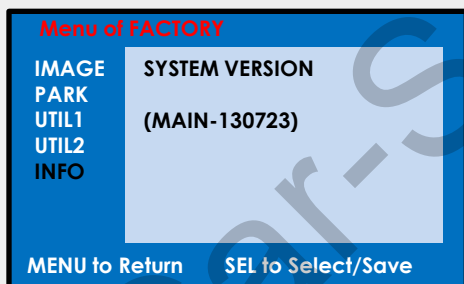


Other options setting up

I-DRV REMOTE : Able to use remote control on
DVD, DTV by selecting "User" after IR
memory registered. (Default, User)

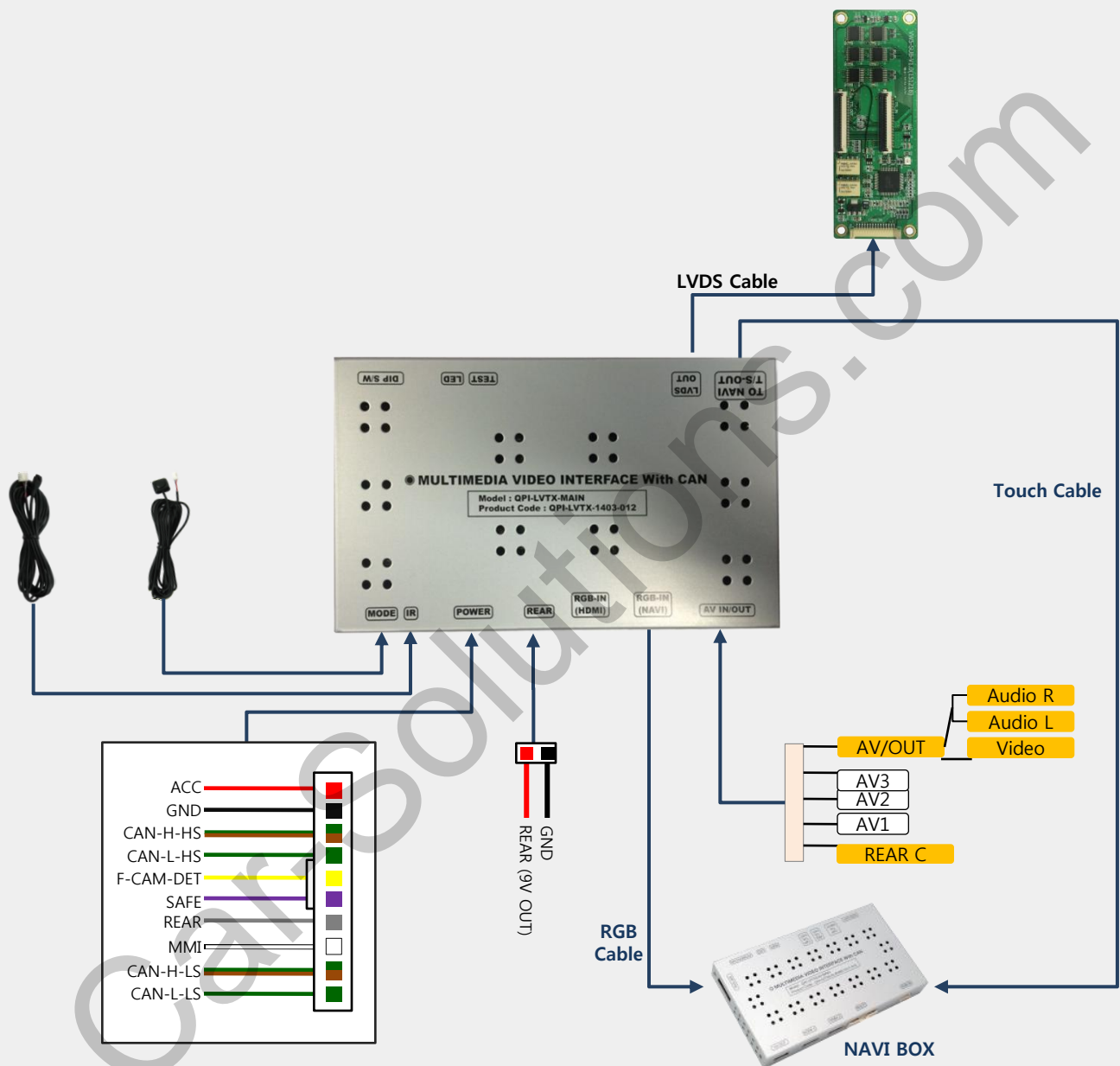
I-DRV CONTROL : Turning on or off of Remote
control usage.

IR MEMORY : Registering IR memory (Remote
control values) of DTV, DVD.

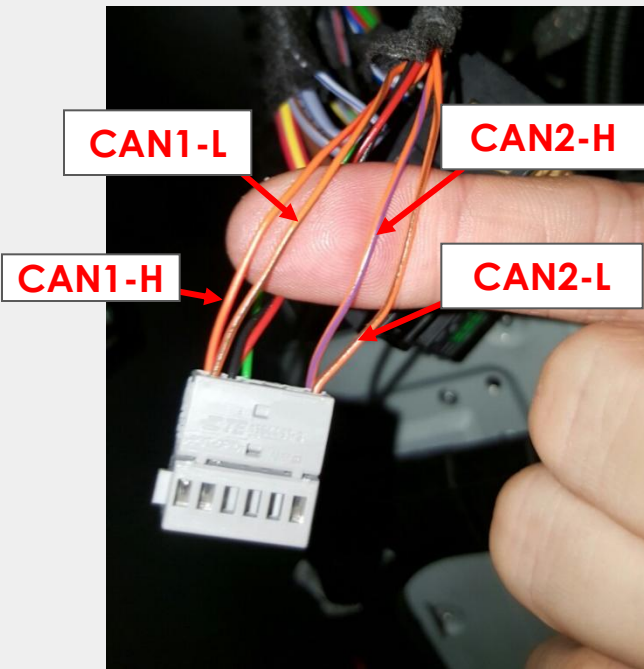


System version information

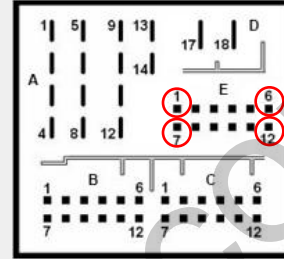
• Installation Diagram



• CAN cable connection



Original Power Cable

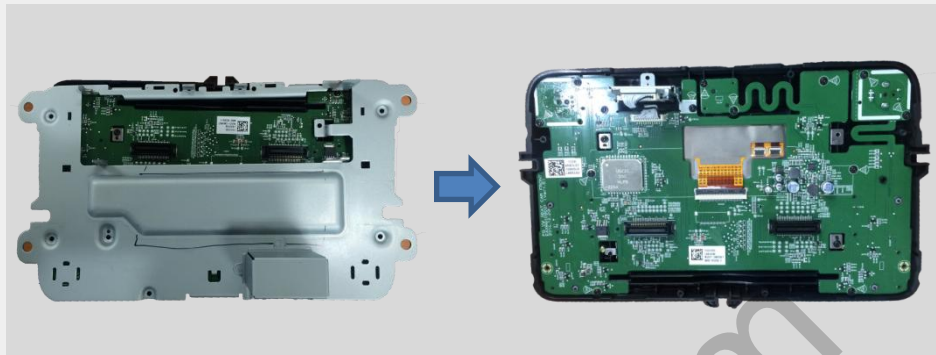


- ※ Find the original 12 pins cable as above at the back side of command.
 - Provided CAN-H-HS wire (Green+Brown) → Original CAN-H wire #1 pin (Orange+Black)
 - Provided CAN-L-HS wire (Green) → Original CAN-L wire #7 pin (Orange+Brown)
 - Provided CAN-H-LS wire (Green+Brown) → Original CAN-H #6 pin (Orange+Purple)
 - Provided CAN-L-LS wire (Green) → Original CAN-L #12 pin (Orange+Brown)
- ※ Color of cable would be different depending on Cars.

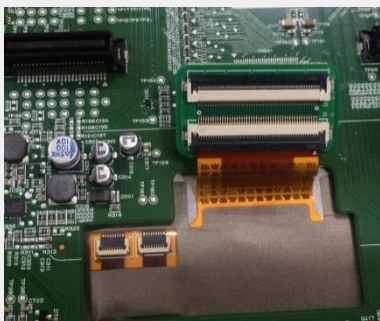
• Connect S/B to Monitor



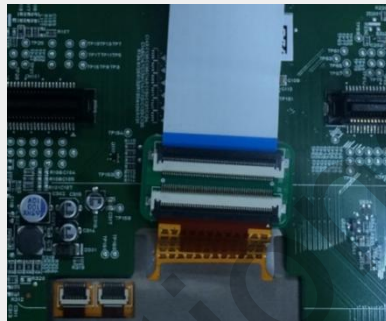
Remove monitor from car



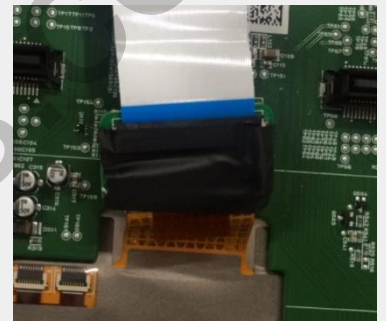
Remove LCD part from the head unit and disassemble the bracket as picture above.



Disconnect the original FPC cable and connect it to Touch sub-board.



Connect the provided FFC cable #1 to the other side of Touch sub-board.



Tape it well so it wouldn't disconnect



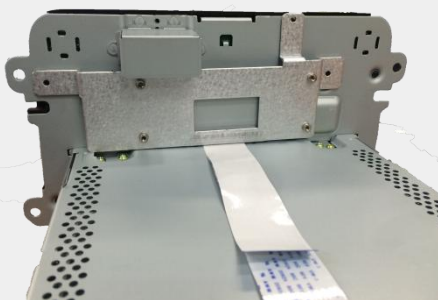
Connect the provided FFC #2 cable to where the original cable removed.



Reassemble the bracket



Reassemble the LCD part to the head unit with arranging cables as picture above.



Install the provided bracket on the back side of LCD as picture above.



Assemble the sub-board and connect FFC cables

FFC #2 from LCD part

↓ Connect
TTL_IN

FFC #1 from Touch S/B

↓ Connect
TTL_OUT

• Trouble shooting

Q. I cannot change mode

A. Check connection of Ground cable and IR Cable. Check LED lamp is on, if not check connection of POWER cable.

Q. All I got on the screen is black.

A. Check second LED lamp of the interface is on, if not, check A/V sources connected are working well.
(Second lamp indicates AV sources connected works well.)
Check interface connection has been done well.

Q. Displayed image color is not proper (too dark or unsuitable color)

A. Press ► button on the remote control for 2 seconds and check how it goes, if it does not work, inform to manufacturer.

Q. I cannot watch the rear camera on the screen

A. Set the DIP switch #7 as state "ON".

Q. Set mode not appear

A. Check DIP Switch.

Q. OEM image is not displayed.

A. Check interface's LCD In/Out cable connection. If the status keeps on, inform to manufacturer.

Q. Screen only displays white color.

A. Check LCD out cable is connected well, if this status keeps, inform to manufacturer.

Q. Show PIP function via handle button, and original screen appear half only.

A. This is not because of faulty interface, please check original monitor split function settings.

Q. If no image is shown on screen after connecting CAN wire with Park gear.

A. Go on the "FACTORY MODE", check "UTIL-Rear Select". If "LAMP", change the setting as "CAN" with the remote control. (※ when connecting Rear-C wire of LAMP power cable to Backup lights, Setting should be like this / CAN : if controlling rear camera with CAN wire)