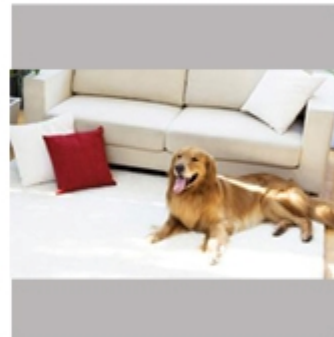


Wireless IP Camera

Quick Installation Guide



HW



Packing List

- IP Camera X1
- DC Power Supply X1
- CD X1
- Certificate of Quality X1
- Warranty Card X1
- Mounting bracket X1
- Mounting screw X1

Key Features

- 1.720P HD Lens
- 2.Free P2P
- 3.Support 9 screens viewing by IE Browser
- 4.Remote viewing by Mobile
- 5.Support pan/tilt,wifi,night vision functions

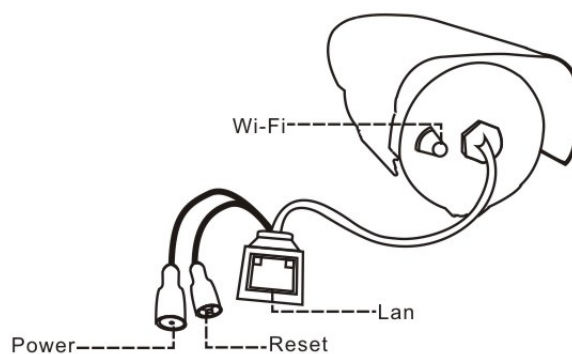
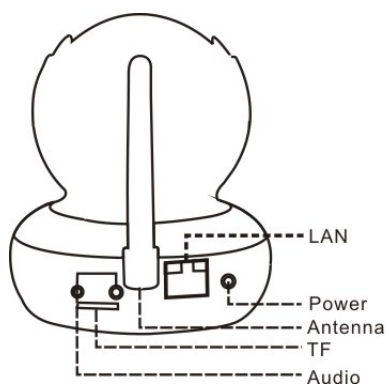


Step 1: Hardware Installation

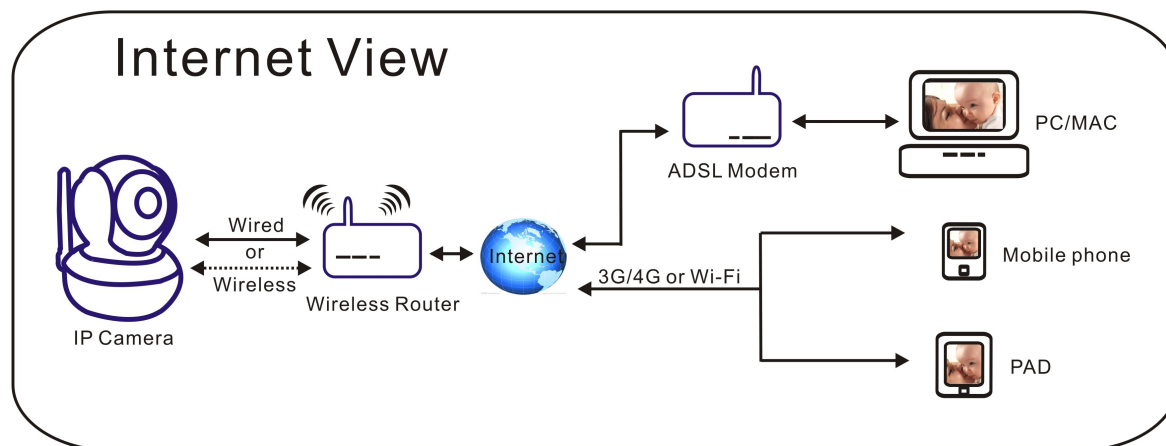
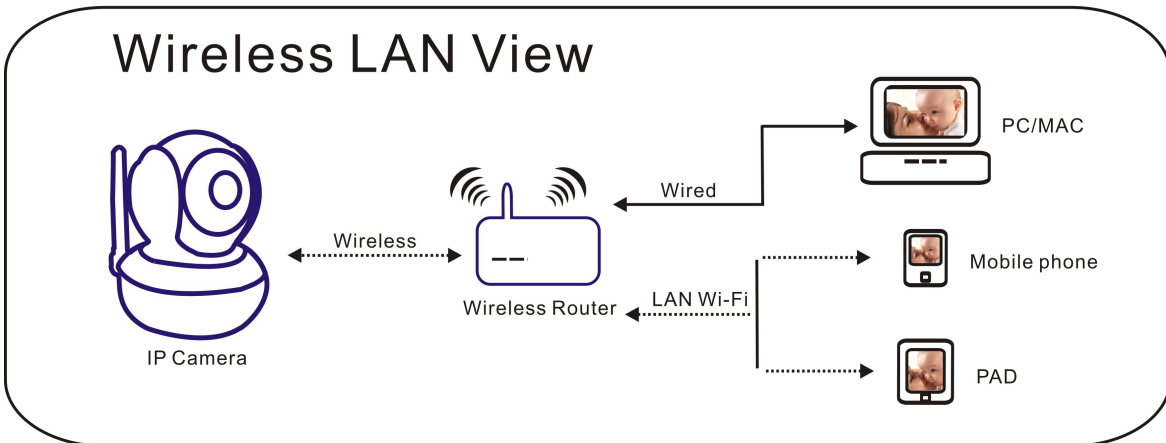
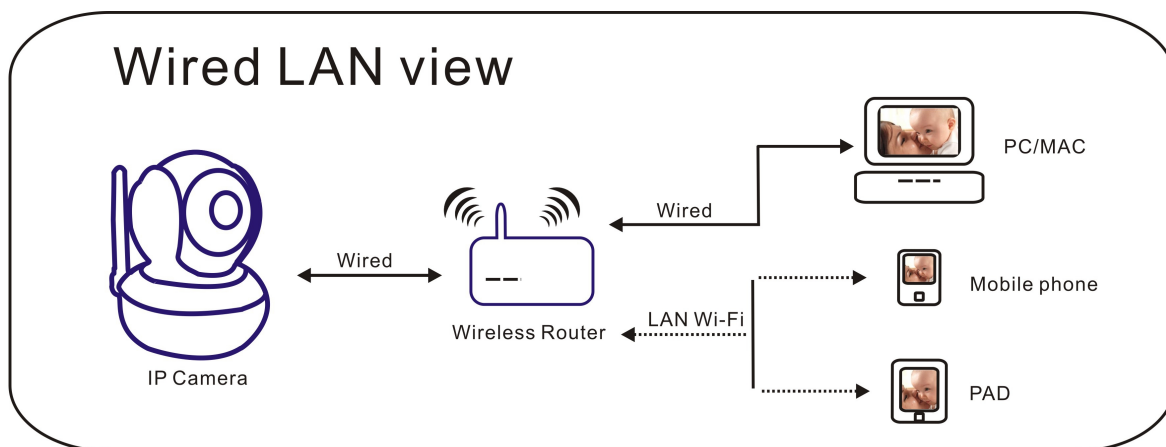
1. Install the antenna.
2. Plug in the right power supply.
3. **Connect your camera to the wireless router (Modem or Switcher) with net cable.**



Screw the antenna to the back of the camera; Make sure it is attached securely. Connect your camera to the router, modem or switcher with net cable. Plug in the power. After a while, the yellow network light at the rear of the camera will blink and the camera will pan and tilt automatically. The green power light will keep on. (If off, said the search network fails, pls check the network cable is correctly used)



The method of the camera connection:



Step 2: Software Installation




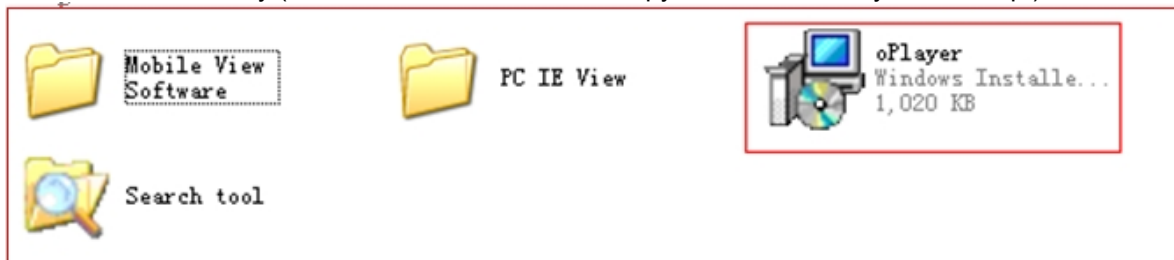
Insert the small CD to your computer CD driver, open the CD, install the following software:

1. ActiveX: Click “oPlayer”—“Next”—“Install”—“Finish”. (This is just a plugin.)



Search tool

2. Search Tool: Open the CD, click , the search tool will run automatically. (No need to install. You can copy this software to your desktop.)




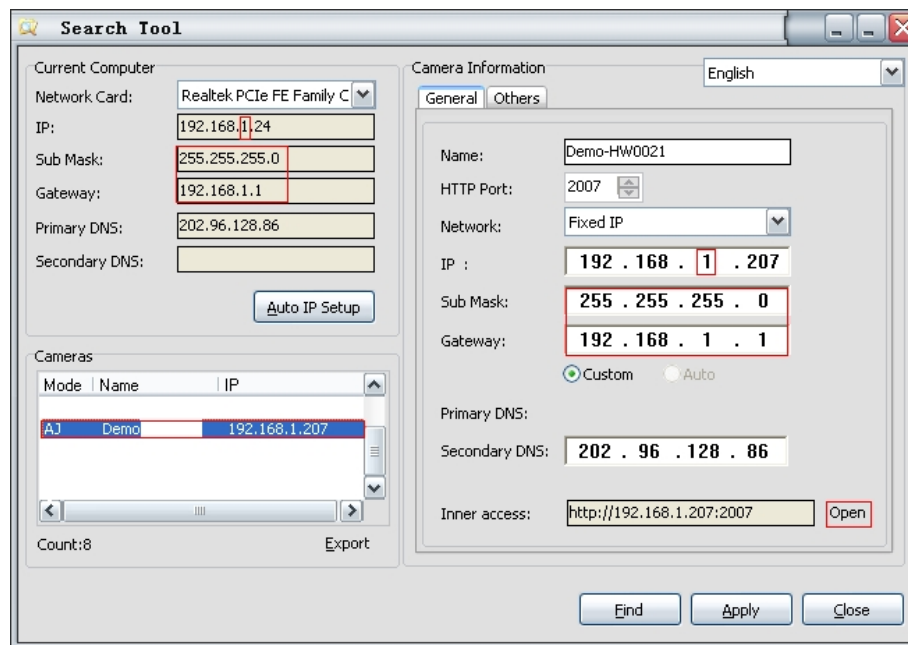
Every camera has an IP address, fixed or dynamic. The search tool is used to find its IP address and port, and also you can use the search tool to modify your camera's information.

Step 3: Login the Camera



Search tool

1. Double click , and following screen will pop up.



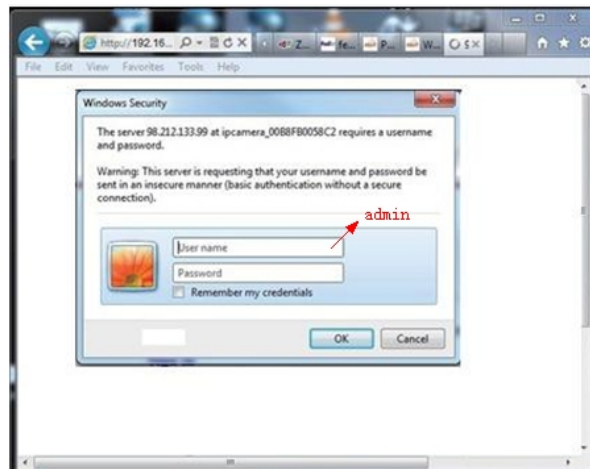
Default Username: **admin**

- Attention: 1. **Current Computer** Shows the computer's IP address information.
2. **Cameras** List shows the cameras which are connected in LAN.
3. **Camera Information**
General **Others** Indicates the camera IP address information.

Confirm that your camera "Subnet Mask", "Gateway", "DNS Server" are the same with your computer's. If not, try to modify it. You can change it manually. When you finished, click "Apply".

Click **Auto IP Setup**, it can help you configure an usable IP address automatically.

2. Finish confirmation, double click the camera IP address in the search tool or click "open" button. Then the default browser will run automatically, asking for username and password.



Default username: admin without password

Input the correct username and password, the logon screen will pop up(support 4 visitors to view online at the same time). There are four modes to login

English | Svenska | Spanish | Deutsch | French | Italian | Korean | Russian | Portugal | 简体中文 | 繁體中文 | OCX Download

ActiveX Mode (For IE Browser)
Sign in

For Internet Explorer

Server Push Mode (For FireFox, Google Browser)
Sign in

For Firefox, Google Chrome, Safari browsers.

No Plug-In Mode (for smartphone browser--JPEG)
Sign in

For smartphone browser.

SD card video playback online(For IE browser)
Sign in

View video files online, for Internet Explorer.

attention: propose using 1024 * 768 screen resolution

Note: 1) If you use IE browser, please choose the first sign-in mode (ActiveX Mode) to login. If you use other browsers, such as Firefox, Safari or Google Chrome, you should choose the second sign-in mode (Server Push Mode). **Don't choose the wrong mode, or you will not see the video.** On the other hand, using Server Push Mode, you lose functions like Recording, 2-way audio, IR control.


2) If use IE browser to connect the camera for the first time, maybe there is no image displayed, there will be an ActiveX prompt, please click the prompt and choose Run Add-on, refresh the IE interface, and login the camera again, then will see live video.

Live video of IE browser:



If the ActiveX installation failed, then you are still unable to see a live video, just a black screen, please don't forget to allow the ActiveX plug-in to run when prompted. (**Tools-Internet Options-Security-Custom level-Enable all the ActiveX.**)

Step 4: Wireless LAN Settings

- 1). Click , go to the "Wireless LAN Settings"
- 2). Scan the WIFI signals, two more times until you find the signals.
- 3). Choose the SSID you want to use.
- 4). Make sure all the parameters are the same with your router, input the WIFI network key.
- 5). Click "Submit", then your camera will reboot, wait a moment, disconnect the net cable carefully.
- 6). Run the search tool see whether you can find the camera IP address, or just refresh the webpage.

Note: Use 802.11 b/g/n mode, Channel less than 11, wpa or wpa2, Aes or Tkip.

Wireless Network List			
4	xha4	94:0C:6D:42:87:74	
5	xhagc	C8:BE:19:AE:19:42	
6	ChinaNet-quZd	38:46:08:D5:81:12	
7	ChinaNet-zFrk	08:18:1A:8D:E5:DF	
8	Carson	00:21:91:45:6A:DC	
9	BLU	BC:D1:77:8C:1F:14	
10	Tenda_289EB0	C8:3A:35:28:9E:B0	
11	ChinaNet-xeE6	9C:D2:4B:44:AE:CC	
12	wanscam1	EC:88:8F:62:1D:B2	
13	wuxian	E0:05:C5:29:E6:4C	
14	HUANG-PC_Network	A8:15:4D:74:DB:30	
15	PHH	90:94:E4:CD:03:DC	
16	MERCURY_11D090	A8:15:4D:11:D0:90	

Scan

Using Wireless Lan ☒

SSID

Network Type


Authentication

Share Key

Submit Refresh

- Device date&Time Settings
- Local record path
- Record Schedule
- Alarm Service Settings
- Mail Service Settings
- Ftp Service Settings
- Alarm Log
- Basic Network Settings
- Wireless Lan Settings
- DDNS Service Settings
- PTZ Settings
- Multi-Device Settings
- Users Settings
- Maintain
- Back

Step 5: DDNS Service Settings

- 1).Click , go to "DDNS Service Settings".
- 2).Choose the DDNS server , input the DDNS user and password.
- 3).Submit, refresh, then DDNS status will show "DDNS Succeed".

DDNS Service Settings	
DDNS Service	<input type="text" value="vipcam.org"/>
DDNS User	<input type="text" value="G1200"/>
DDNS Password	<input type="password" value="....."/>
DDNS Status	DDNS Succeed
proxy config is needed if the device is in China Mainland or HongKong	
Submit Refresh	

Thus the remote address is <http://G1200.vipcam.org>. To make it work, you have to do port Forwarding In your router . That is, create a virtual server; put your camera IP address and port in.

Step 6: Mail Service Settings and Alarm Service Settings

- 1). Mail service is a preparation for the alarm function. When your camera is triggered, it will send You email attached with photo. As Premise, you should set mail service right, and test ok. Take Gmail as example.

Mail Service Settings	
Sender	tracy8705@gmail.com
SMTP Server	smtp.gmail.com @gmail.com
SMTP Port	465
Need Authentication	<input checked="" type="checkbox"/>
SSL	TLS
SMTP User	tracy8705@gmail.com
SMTP Password	•••••
Receiver 1	tracy8705@gmail.com
Receiver 2	1930640568@qq.com
Receiver 3	
Receiver 4	
<input type="button" value="Test"/> Please set at first, and then test	
<input type="button" value="Submit"/> <input type="button" value="Refresh"/>	

[Device information](#)
[Alias Settings](#)
[Device date&Time Settings](#)
[Local record path](#)
[Record Schedule](#)
[Alarm Service Settings](#)
[Mail Service Settings](#)
[Ftp Service Settings](#)
[Alarm Log](#)
[Basic Network Settings](#)
[Wireless Lan Settings](#)
[DDNS Service Settings](#)
[PTZ Settings](#)
[Multi-Device Settings](#)
[Users Settings](#)
[Maintain](#)
[Back](#)

The informations need fill out as follows:

Sender: Fill out your email

Receiver: Fill out your email or others email

SMTP user: Fill out your email username

SMTP password: Fill out your email password

Note: This function works when the ip camera access network. When you use Gmail, the port should be 465, SSL should be TLS. The most important, make sure your Gmail has enabled SMTP.

2). Alarm Service Settings, please do the same settings like following screenshot:

Alarm Service Settings	
Motion Detect Armed	<input checked="" type="checkbox"/>
Motion Detect Sensibility	5 The smaller the value, the more sensitive
Alarm Input Armed	<input type="checkbox"/>
Alarm trigger event	
Alarm preset linkage	None
Send Alarm Notification by Mail	<input checked="" type="checkbox"/>
Upload Image on Alarm	<input checked="" type="checkbox"/>
Upload Interval (Seconds)	5
Alarm Arming Time	
Scheduler	<input checked="" type="checkbox"/>
select all	<input checked="" type="checkbox"/>
Day	0 1 2 3 4 5 6 7 8 9 10 11 12 13 14 15 16 17 18 19 20 21 22 23
Sun	
Mon	
Tue	
Wed	
Thu	
Fri	
Sat	
<input type="button" value="Submit"/> <input type="button" value="Refresh"/>	

[Device information](#)
[Alias Settings](#)
[Device date&Time Settings](#)
[Local record path](#)
[Record Schedule](#)
[Alarm Service Settings](#)
[Mail Service Settings](#)
[Ftp Service Settings](#)
[Alarm Log](#)
[Basic Network Settings](#)
[Wireless Lan Settings](#)
[DDNS Service Settings](#)
[PTZ Settings](#)
[Multi-Device Settings](#)
[Users Settings](#)
[Maintain](#)
[Back](#)

If you keep the camera page (browser) on, it will record for 1 minute when be triggered.

Step 7: Record & Capture Path

Local record path	
Local record path	D:\ <input type="button" value="select..."/>
Record time length(Minute)	5 <small>Least 5 Minutes , MAX 120 Minutes</small>
Reserved disk space(MB)	200 <small>Least 200MB</small>
Record cover	<input type="checkbox"/>

- Record & Capture Path: Where to put the files, video and photos. **(If you can't choose this, pay attention to your PC OS and IE version, use IE browser.)**
- Record file length: At least 100MB
- Record time length: At least 5 minutes.
- Reserved disk space: when your pc disk is less than 200MB, stop recording.
- Record cover: Delete the old files when the disk capacity is not enough.

Step 8: Record Schedule (For HW0021, HW0024, with SD card recording function)

This sector is for **SD card recording settings**. When the SD card has been inserted, it will show the capacity of the card. But at first, you need to format it. It include: Record coverage, Record time, Timer recording. The settings are like following:

Record Schdule	
sd total capacity(M)	0 M
sd remaining capacity(M)	0 M
sd state	sd card is not inserted <input type="button" value="Format"/>
Record coverage	<input checked="" type="checkbox"/>
Record time(minute)	10 <small>Recording time range: 5~180 minutes</small>
Timer recording	<input checked="" type="checkbox"/>
select all	<input checked="" type="checkbox"/>
Day	0 1 2 3 4 5 6 7 8 9 10 11 12 13 14 15 16 17 18 19 20 21 22 23
Sun	
Mon	
Tue	
Wed	
Thu	
Fri	
Sat	

Device information
Alias Settings
Device date&Time Settings
Local record path
Record Schedule
Alarm Service Settings
Mail Service Settings
Ftp Service Settings
Alarm Log
Basic Network Settings
Wireless Lan Settings
DDNS Service Settings
PTZ Settings
Multi-Device Settings
Users Settings
Maintain
Back

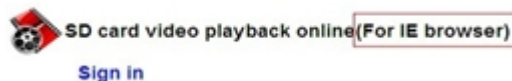


Record coverage: Delete old files when the SD card is nearly full.

Record time: Create a video file every 10 minutes.



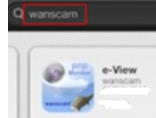
Timer recording: Set the time, select all, keep recording to the SD card.

You can playback the video online with **IE browser**. Press "Enter" button, choose the last sign in mode:





Step 9: Install PC Client and Mobile App

1. For PC, install the program  in the CD, add the cameras in.
2. For Android, copy the app  "E-view" to the phone, install it.
3. For iPhone, iPad, go to App Store, search  "wanscam" to download "e-View".

FAQ

1. Why does my computer or security software say the software is dangerous and it is a virus?

The wizard will detect device in your network, and it seems like a virus. Please ignore the warning and continue.

2. Why can't the wizard detect the camera?

Please make sure the network cable is connected and turn off firewall and security software on your computer.

3. Why does the wizard say "the camera cannot be accessed, please choose Auto IP Set or manual setting" after we have already done Auto IP Set and Manual Setting?

Please connect the camera to your router or ADSL router, and DO NOT connect it to your PC directly.

4. Why does the camera always ask for username and password, or it says Incorrect User?

The camera's default username is **admin**, and please leave password blank.
If you forget your username or password, you can reset the camera to factory settings to get the default username and password.

5. How can I reset the camera to factory settings?

Please press the reset button under or on the camera for about 1 minute until the camera reboots. Please make sure the power supply is connected to the camera when you are doing it.

6. Why is there no audio and video from the camera (Only indoor camera support audio)?

No audio: Please sign in Internet Explorer mode for IE.

No video: IE does not support Firefox mode and other web browsers do not support ActiveX mode, please login the correct mode for video.

Mobile application supports video but does not support audio, you could find some 3rd party application support audio for this IP camera.

7. Why is the image blurry?

Remove the protective film on the lens and rotate the lens of the camera to get a clear image.

8. Why doesn't the camera pan/tilt properly?

Maybe the camera is stuck. Please rotate its head manually to fix it.

9. Why does the camera always drop wireless connection?

Please tighten the antenna of the camera. Make sure it is not far away from the router and there is no big barrier between the camera and the router.

10. The comparison of different browsers.

	IE	Firefox, Chrome, Safari in all platforms
Video	YES	YES
Record	YES	NO
Alarm Record	YES(Only in live video page)	NO
By E-mail or FTP	YES	YES
Multiple View	YES	NO
Audio	2 Way	NO

Note:

Certain functions mentioned in this manual may vary according to camera's model.

For example, pan and tilt function are for Pan/Tilt enabled cameras only.

If you have any difficulty with the installation, please contact our customer service for help or refer to the official website of Wanscam.

Thanks for your support and attention, for further operation details, please check the full version user manual of our IP Cameras!