

**BMW E60 VIDEO PAS INTERFACE MANUAL**

**1.SWITCH TO SCREEN MODE**



MODE	KEY	OPERATION	
DMB		CHANNEL UP (SHORT)	MOVE UP THE IDRIVE ON 12 O'CLOCK DIRECTION (SWITCH CHANNEL)
		CHANNEL DOWN (SHORT)	MOVE DOWN THE IDRIVE ON 6 O'CLOCK DIRECTION (SWITCH CHANNEL)
PIP (AV, REAR CAMERA)		PRESS FOR 3S LONG	ON AV SCREEN – PIP SCREEN MODE SWITCHED ON REAR SCREEN – PIP SCREEN MODE SWITCHED ( FULL → 2:1 → 1:2 )
AV1~2		PRESS FOR 3S LONG	AV SCREEN SWITCHED (SCREEN WILL SWITCH TO WHICH DEVICE ALREADY CONNECTED)
DIRECT TO DMB		PRESS FOR 3S LONG	IT IS POSSIBLE TO DIRECT TO DMB WHEN YOU CONNECTING IR SIGNAL OF INTERFACE WITH IR SIGNAL OF NAVIGATION

\* IT IS POSSIBLE TO SWITCH DMB CHANNEL UP/DOWN OR DIRECT TO DMB WHEN YOU CONNECTING IR SIGNAL OF INTERFACE WITH IR SIGNAL OF NAVIGATION.

\*PLEASE SWITCH SCREEN BY MENU BUTTON .\*

**2.SWITCH TO AV SCREEN MODE**



ORIGINAL SCREEN



AV SCREEN



FULL OF ORIGINAL SCREEN

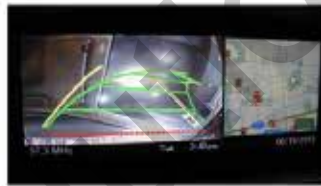


FULL OF AV SCREEN

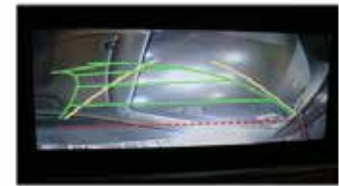
**3.SWITCH TO REAR CAMERA MODE**



ORIGINAL SCREEN SCREEN OF REAR CAMERA(1:2)



SCREEN OF REAR CAMERA(1:2) ORIGINAL SCREEN



FULL SCREEN OF REAR CAMERA

**4.SWITCH MODE**

1)HOW TO SET SWITCH MODE [ (ON) 0 : ↓ off / (OFF) 1 : ↑ on ]

off DIP\_SW1 : Navigation On/Off  
 on DIP\_SW2 : AV1 On/Off  
 DIP\_SW3 : AV2 On/Off  
 DIP\_SW4 : REAR CAMERA On/Off  
 DIP\_SW5 : AT ON / MT OFF  
 DIP\_SW6,7,8 : VEHICLE SETTING  
 [ (ON) 0 : ↓ off / (OFF) 1 : ↑ on ]

Off	On	0,1,1 : 8.8" MONITOR	Off	On	0,1,0 : 8.8" MONITOR
Off	On	0,0,1 : 8.8" MONITOR	Off	On	0,0,0 : 6.5" MONITOR

\* PLEASE SWITCH DIP S/W 6 OFF WHEN VIDEO SCREEN DO NOT DISPLAY. \*

\* Please put dip switch 6 ON when OEM screen has noises. Please hold iDrive to left. Then left of screen will display CLK 1 to CLK6. If the screen display normally. Then mode change finished.

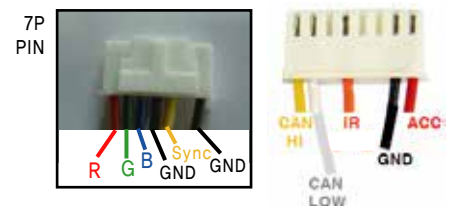
**5.HOW TO ENTER NAVIGATION SETTING MODE**



PRESS **OK** BUTTON 4 TIMES THAN YOU WILL SEE THE NUMBER **1** ON THE LEFT TOP OF THE SCREEN FROM 1~4 WHEN IT'S NUMBER 4, PRESS THE **POWER** BUTTON TO ENTER THE SETTING MODE.

\* PLEASE TURN OFF & ON AFTER SETTING

\* SEQUENCE OF RGB PIN :



**6.ACCESSORIES :**

