

Installation Manual

Q-Roi Navigation System for Porsche

Warning / Precautions!



Warning

- Do not modify, dismantle or unintended operation this system outside Q-roi After Sales. Damage occurred by unintended operation may cause Q-roi After Sales service void.



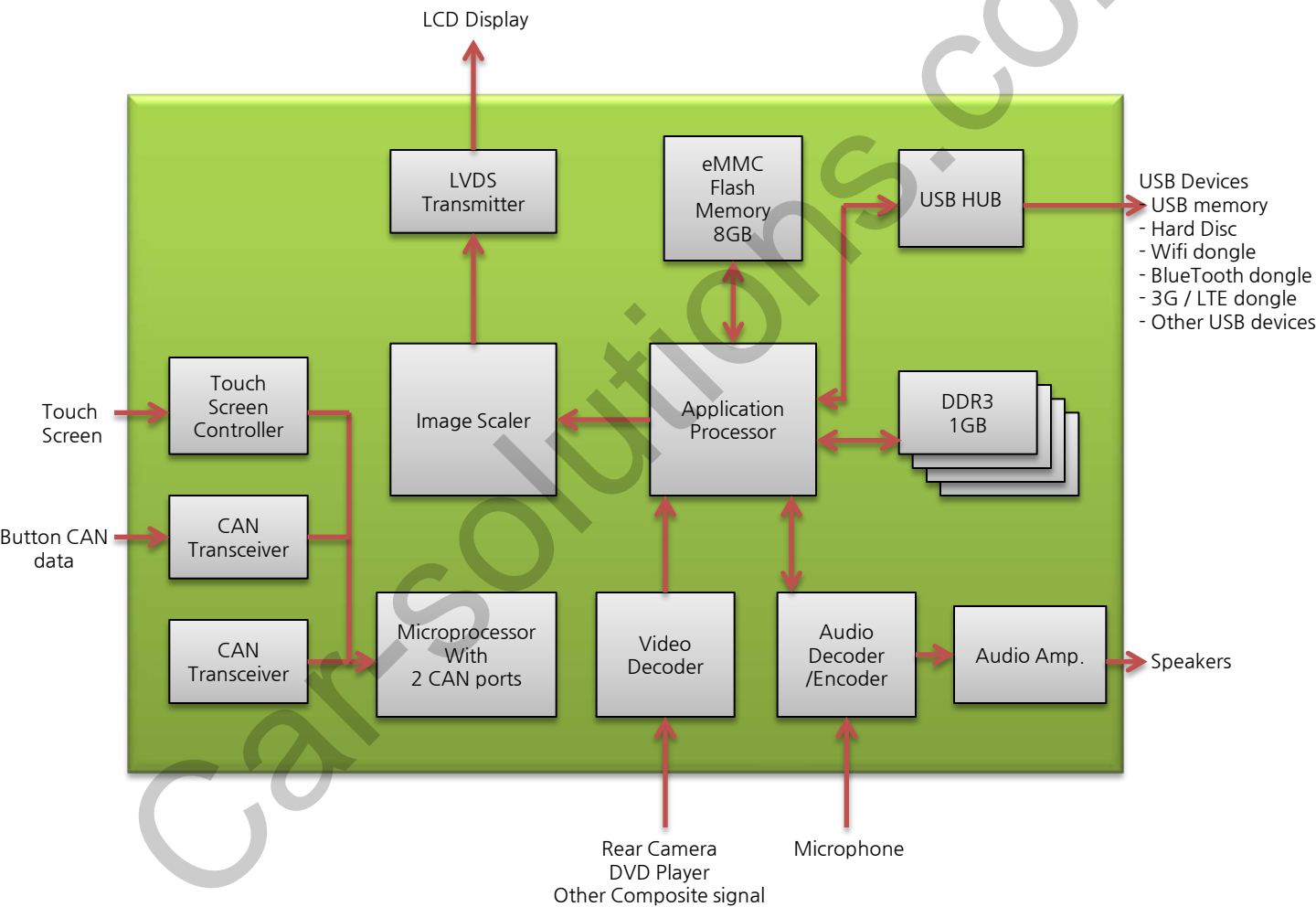
Warning

- Always wear seatbelt. When the vehicle is suddenly stop can cause injury.
- Remove dust, oil, and waste on the display.
- Incidental damages (including, without limitation, consequential damages due to the use of this unit and the dead loss of business profit, changes, loss of memory contents, etc) will not be taken responsibility.
- Any function that requires your prolonged attention should only be performed after coming to a complete stop. Always stop the vehicle in a safe location before performing these functions. Failure to do so may result in an accident.
- The engine is off while the system operates for long time, battery may be discharged.
- This product is not a substitute for your personal judgment. Any route suggested by this navigation system may never supersede any local traffic regulation. Do not follow route suggestions if the navigation system instructs you to perform an unsafe or illegal maneuver.

1. General Spec

OS	Android 4.2.2 (Jelly Bean)
CPU	Telechips TCC8930 (1GHz Cortex A9 DualCore)
Display	OEM LCD
Internal Memory	DDR3 1GB RAM + 8GB eMMC
External Memory	SDHC Slot Support (up to 64GB)
Function	A/V Input x 3, Rear Cam Input x 1, CAN(Controller Area Network) x 2, Mic x 1, External Speaker x 1 (mono), External Audio Out x 1(Car Aux),
Output	LVDS (thru Video Interface)
Touch Type	Resistive Touch
GPS	SiRF
Resolution	800*480
USB	USB 2.0 x 5 (USB x 4, OTG USB x 1)
Input Voltage	12V
Temperature	operating 0 C to 60 C
	Storage -20 C to 60 C
Languages	multi-languages

2. System Diagram



3. Components



SUB BOARD * 1EA



WIFI dongle * 1ea
(ETCETC0196)



LVDS cable * 1EA
(HLVDSC0039)



FFC Cable*1ea
(FFCABL0008)



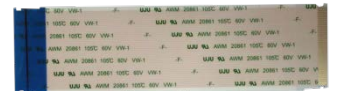
30P FFC Cable*1ea
(FFCABL0056)



POWER cable * 1EA
(HPOWER0045)



4P FFC Cable * 1ea
(FFCABL0033)



50P FFC Cable*1ea
(FFCABL0057)



POWER cable * 1EA
(HPOWER0055)



Multi cable * 1ea
(HARETC0068)



Touch cable * 1EA
(HTOUCH0027)



Speaker * 1ea
(SPEAKE0007)



REAR CAMERA cable * 1ea
(HARETC0002)



AV/BT Cable * 1ea
(HAVCAB0020)



USB cable * 2ea
(HARETC0078)



MODE switch cable* 1ea
(HARETC0001)



Microphone cable * 1ea
(MICPHO0002)



GPS Antenna * 1ea
(GPSANT0008)



SD extension cable* 1ea
(HARETC0080)

4. OEM Buttons

Monitor



※ NAVI button
Short press- mode switch



※ OPTION button
Long press(5seconds)-RESET

Steering Wheel



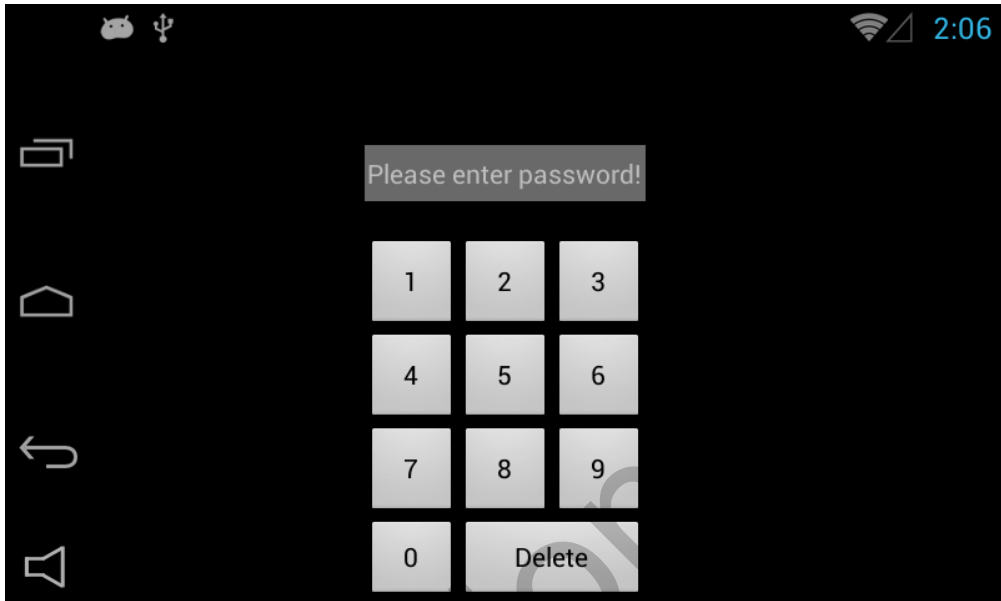
※ BACK button
Long press(5seconds)- Mode switch
Short press - OEM mode

5. Cautions before installation

- Ignition key should be taken off before starting installation, interface power connection must be the last step in installation.
- Power cable should be separated when connecting interface.
- Should be no any electronic devices or magnetic pole around installation place.
- All steps of installation should be done by well-trained specialist.
- Dismantling without manufacturer's permission can not be guaranteed, (No permission to break attached label on the board.)
- Kindly check all parts are in the box, when receiving the product, if anything missing, inform to the supplier or manufacturer.
- Install GPS away from electromagnetic devices such as black boxes, Hi-Pass and etc.
- Advisable to Install GPS at the edge of dash board or a front window or a rear window.
- Install GPS antenna mounted on window or roof facing to Sky .
- According to our sales policy, any problems caused by user's mistake, careless can not be guaranteed.

6. Installation

6.1 Factory Menu



※ APPS→FACTORY SETTING

- ① Put Password and change program upgrade and set-up of external device. (Only Installers are authorized)

※ Please contact the manufacturer to get Password.

6. Installation

6.1 Factory Menu



① CAR MODEL : No use

② DVD TYPE : Only for DVD connected to A/V.
(Connect IR-AV1 to DVD to use DVD as touch Screen.)

③ CMMB SELECT : Select DTV model (Only for China)

④ TOUCH MODE : Settings for LCD resolution to activate touch function

⑤ SETTING

- GEAR CHECK TYPE : Detecting rear camera via either CAN or Rear Lamp.

- EXT. RCAM : Put "On" - Aftermarket Rear Camera

Put "Off" - OEM Camera

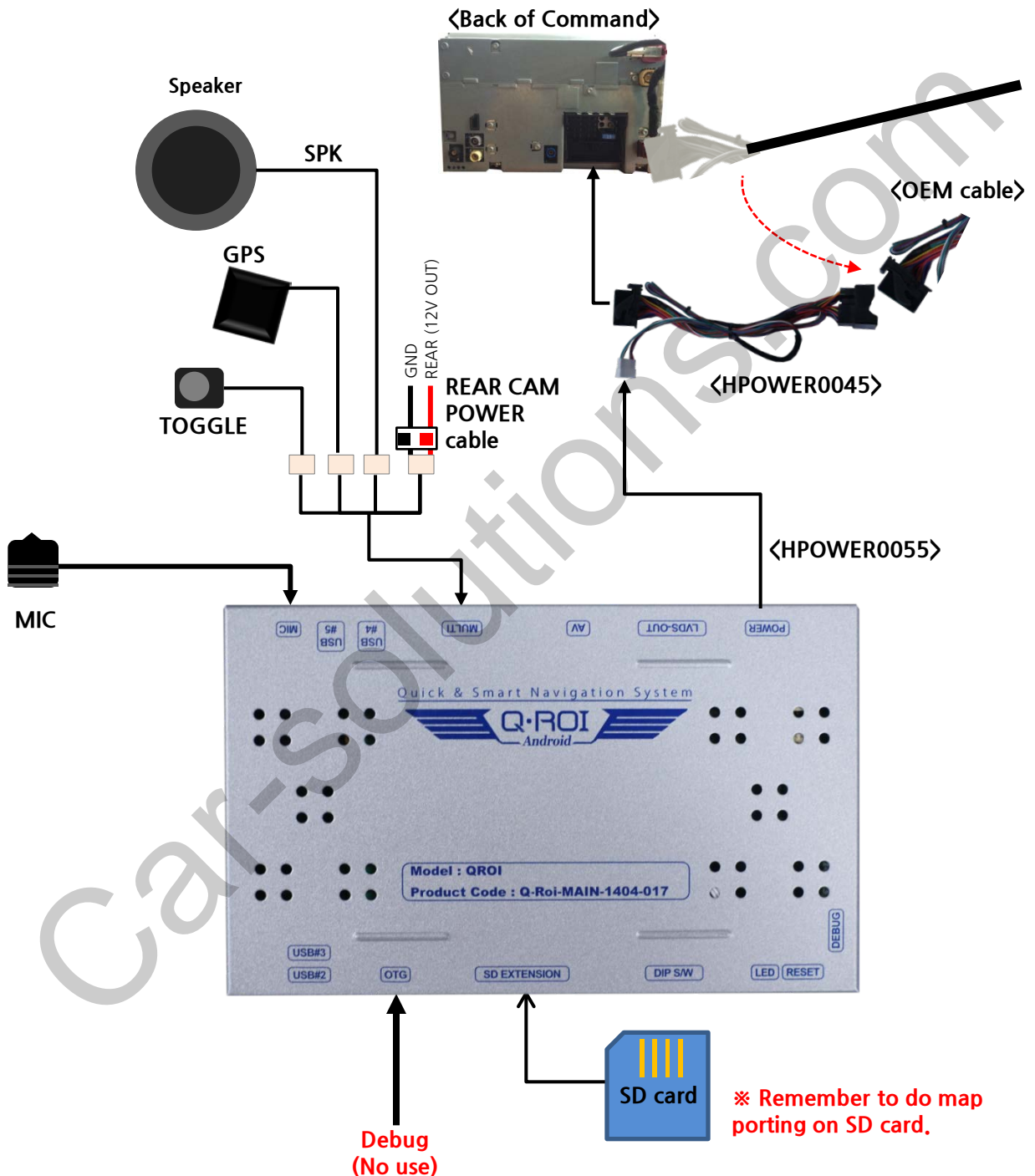
- SAFE MODE : Either Enable or Unable to watch Video while driving.

- HANDLE KEY : No use

⑥ SAVE & EXIT : Save and Reboot

6. Installation

6.2 Installation Diagram



6. Installation

6.4 Sub-board connection



① Disassemble the monitor and connect the touch cable from the back of LCD as shown on the left

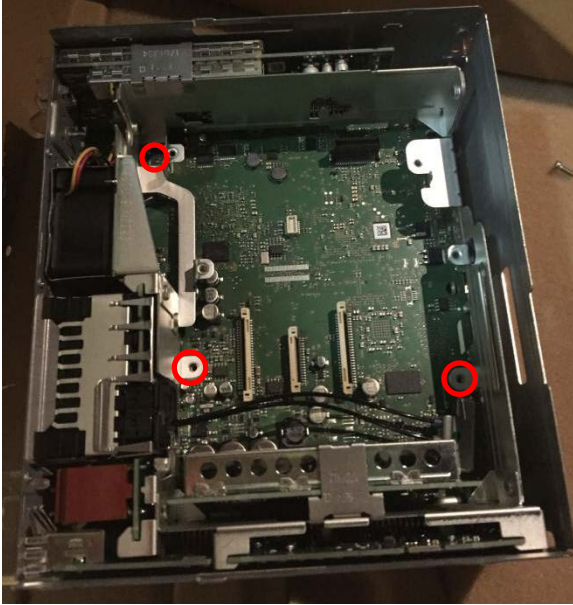
- OEM Gold touch cable → Supplied touch cable (HTOUCH0027)
- Supplied FFC cable → Supplied touch cable (FFCABL0033) (HTOUCH0027)
- Supplied black FFC cable → Where OEM touch cable is connected (FFCABL0008)



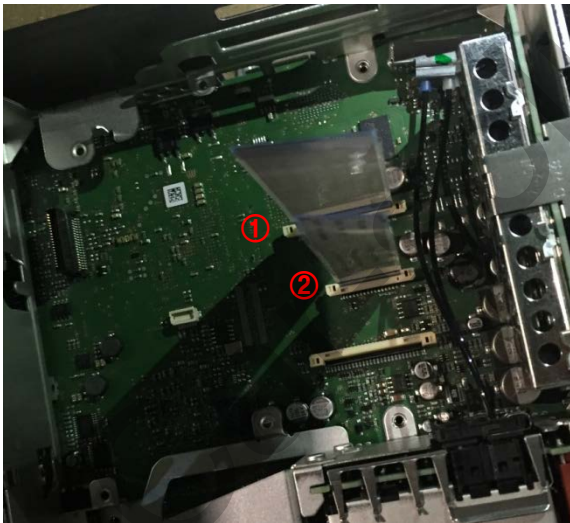
① Take out cables through the marked place and assemble the plate.

6. Installation

6.4 Sub-board connection



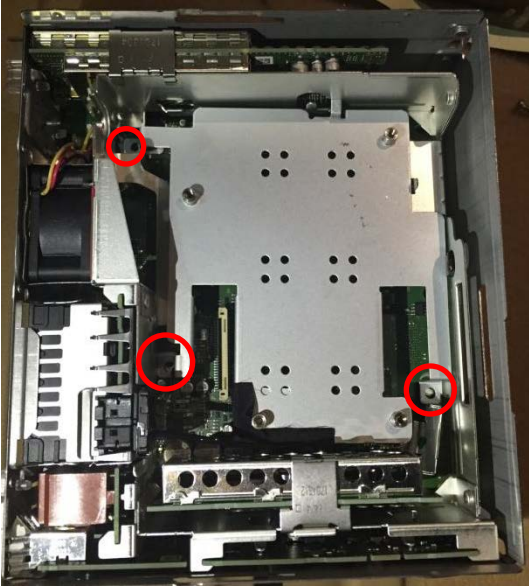
- ③ This shows another side of LCD
Loosen 3 bolts which are marked on the left



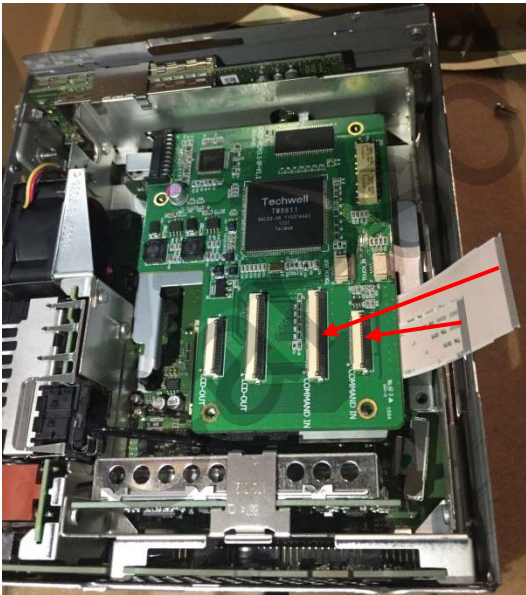
- ④ Connect supplied FFC cable to marked place
- Supplied 50P FFC cable → ①
(FFCABL0057)
 - Supplied 30P FFC cable → ②
(FFCABL0056)

6. Installation

6.4 Sub-board connection



- ⑤ place the bracket where bolts were loosen and tighten bolts again



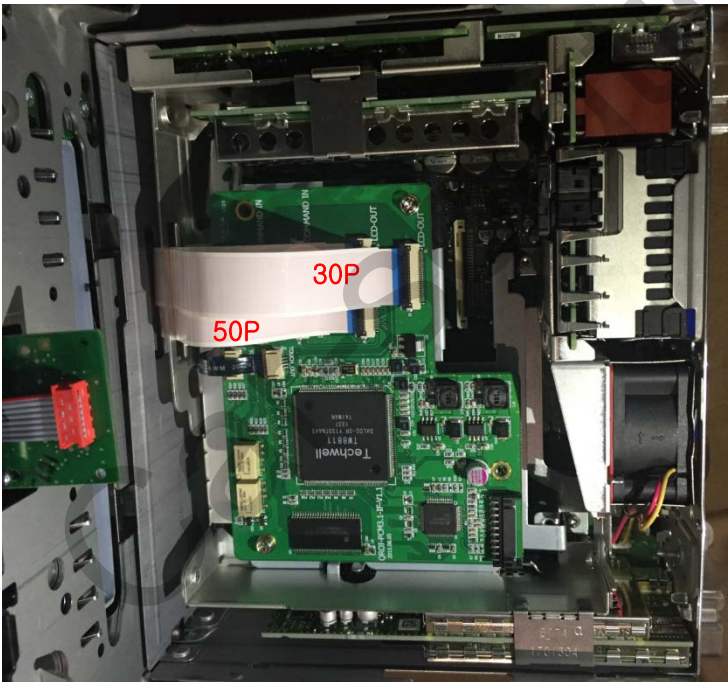
- ⑥ On the top of bracket, place the subboard and connect the supplied FFC cables as shown on the left

6. Installation

6.4 Sub-board connection



- ⑦ Pull the cables on the backside of LCD through the marked place.



- ⑧ Connect cables as shown on the left

- Black FFC cable → LCD OUT
- FFC cable → LCD IN

7. Quality Warranty

This product has been tested and have passed under our strict quality control. If the failure occurred due to the carelessness of workmanship within one year after the purchase, we are responsible to repair free of charge.

Please bring this warranty to dealer whom you purchased this product from at the repair time. Should this warranty not presented, repair charged will be on customer. Please keep this warranty card.

Warranty			
Product name	Q-ROI PCM3.1		
Warranty period	1 year	Purchase date (yy/mm/dd)	
Customer	Address		
	TEL		
	Name		
Dealer	Address		
	Name		