

Q-Roi Toyota Tundra

Instruction Manual

Warning / Caution



Warning

- When installing the main unit, do not remove or alter existing vehicle fasteners, including nuts, bolts, screw, clips, and fittings. Never detach, move or alter existing vehicle wiring, including electrical grounds and straps. Alteration of existing vehicle components may make vehicle unsafe to operate. Should be no any electronic devices or magnetic pole around installation place.
- Air bags are vital part of a safety system. Never install main unit in a way which will alter air bag wiring or interfere with air bag deployment. Air bags must function properly in the event of an accident.
- Before installing, check the location of pipe, tank, electrical cables and others.
- Read and follow the instruction manual.
- Wiring location must not interfere driving, get in or out from car.
- Use electrical tape to insulate the ends of all wires, even if they are not used. Proper insulation prevents arcs, shocks and fires.
- When installation is complete, test all vehicle electrical systems to ensure they operate correctly, including lights, horn, brake lights, and emergency flashers.
- According to our sales policy, any problems caused by user's mistake, careless can not be guaranteed.



Caution

- All steps of installation should be done by well-trained specialist.
- During installation ignition key should be taken off and after all installation finish connect power cable with interface for the last step.
- Do not install the main unit in places where it may be exposed to dew condensation (around the air conditioning hose, etc), or in locations where it may come in contact with water, high levels of moisture, dust or oily smoke
- Install wiring in a manner in which cables will not come in contact with metal parts. The wiring may be damaged by contact with metal parts, resulting in fire and shocks. Avoid all contact with hot surfaces when wiring the main unit. High temperatures may damage wiring, causing shorts, arcing and fires.
- Kindly check all parts are in the box, when receiving the product, if anything missing, inform to the supplier or manufacturer.

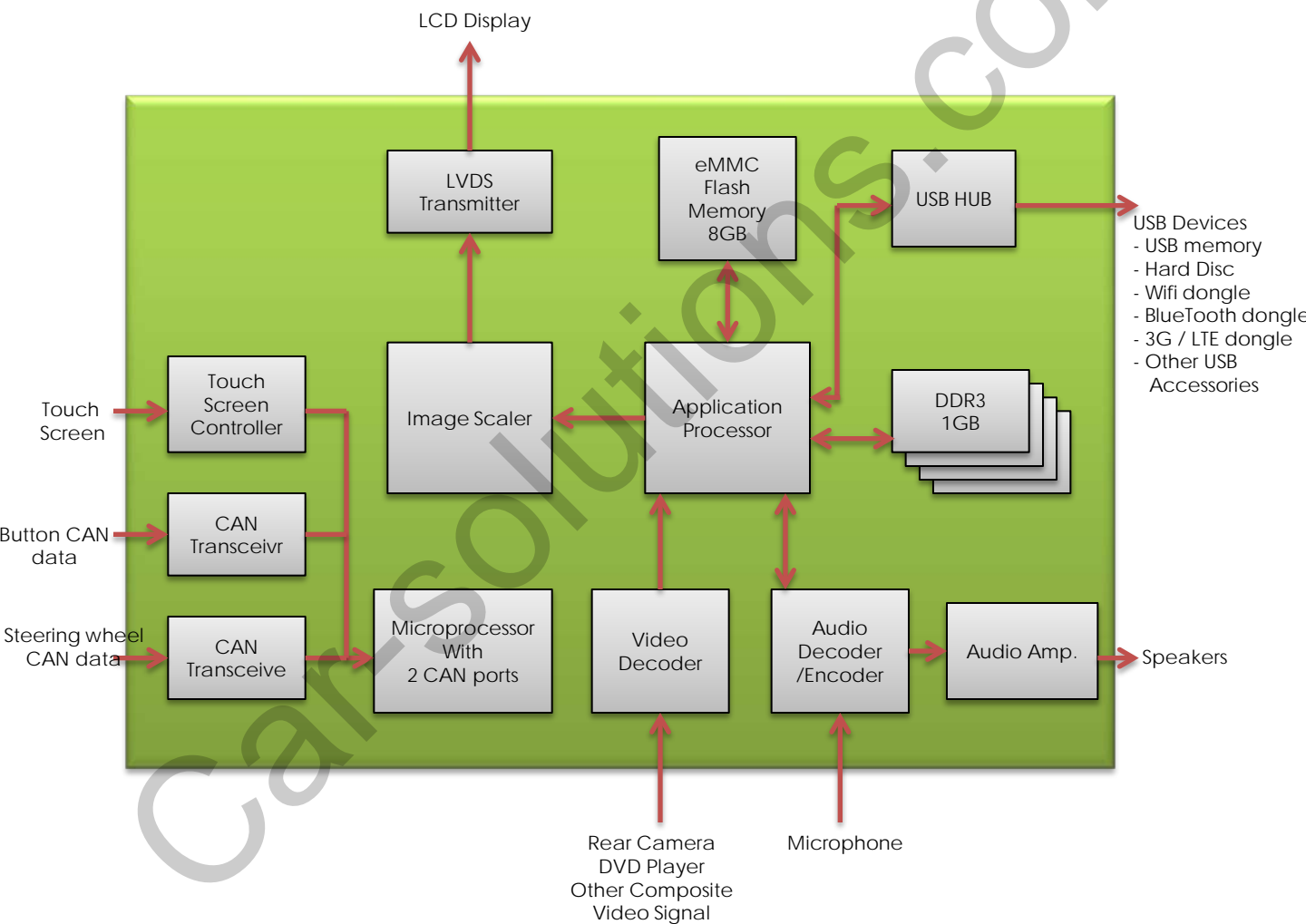
Index

1. General spec
2. System Diagram
3. Components
4. Setting up Dip S/W
5. Installation diagram
6. Pin Specification of Connector Installation Diagram
7. Cautions before Installation
8. Installation
9. Quality Warranty

1. General Spec

| | |
|-----------------|--|
| OS | Android 4.2.2 (Jelly Bean) |
| CPU | Telechips TCC8930 (1GHz Cortex A9 DualCore) |
| Display | OEM LCD |
| Internal Memory | DDR3 1GB RAM + 8GB eMMC |
| External Memory | SDHC Slot Support (up to 64GB) |
| Function | A/V Input x 3, Rear Cam Input x 1, CAN(Controller Area Network) x 2, Mic x 1, External Speaker x 1 (mono), External Audio Out x 1(Car Aux), |
| Output | LVDS (thru Video Interface), RGB (thru Sub-Board) |
| Touch Type | Resistive Touch |
| GPS | SiRF |
| Resolution | 800*480 or 1024*480 |
| USB | USB 2.0 x 5 (USB x 4, OTG USB x 1) |
| Input Voltage | 12V |
| Temperature | operating 0 C to 60 C |
| | Storage -20 C to 60 C |
| Languages | multi-languages |

2. System Diagram



3. Components



3G dongle * 1ea(Option)
(ETCETC0116)



WIFI dongle * 1ea(Option)
(ETCETC0110)



FFC cable* 1ea
(FFCABL0000)



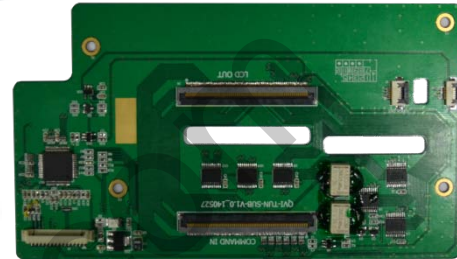
LVDS cable* 1ea
(HALVDSC0020)



Bolt* 4ea
()



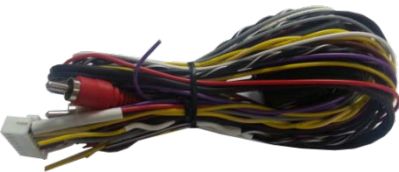
Bolt* 3ea
()



Sub-board * 1ea
(QCPASS0000)



TOUCH cable * 1ea
(HTOUCH0007)



Power cable 16P * 1ea
(HPOWER0041)



GPS Antenna * 1ea
(GPSANT0006)



Multi cable * 1ea
(HARETC0068)



AV/BT Cable * 1ea
(HAVCAB0016)



USB cable * 2ea
(HARETC0027)



Microphone cable * 1ea
(MICPHO0001)



MODE switch cable* 1ea
(HARETC0001)



Speaker * 1ea
(SPEAKE0001)



REAR CAMERA cable * 1ea
(HARETC0002)

4. Setting up Dip Switch(I/F)

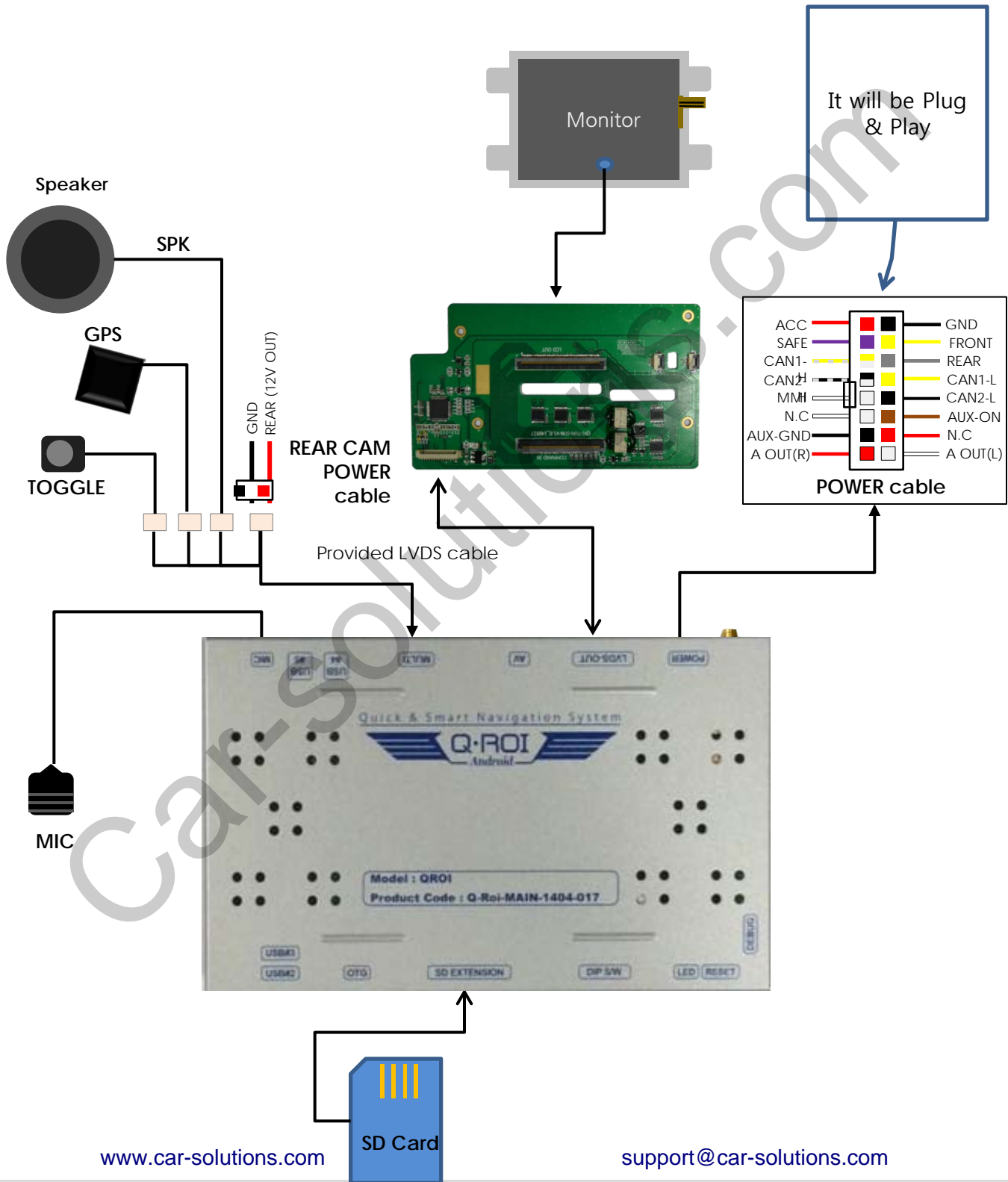


※ ON : DOWN / OFF : UP

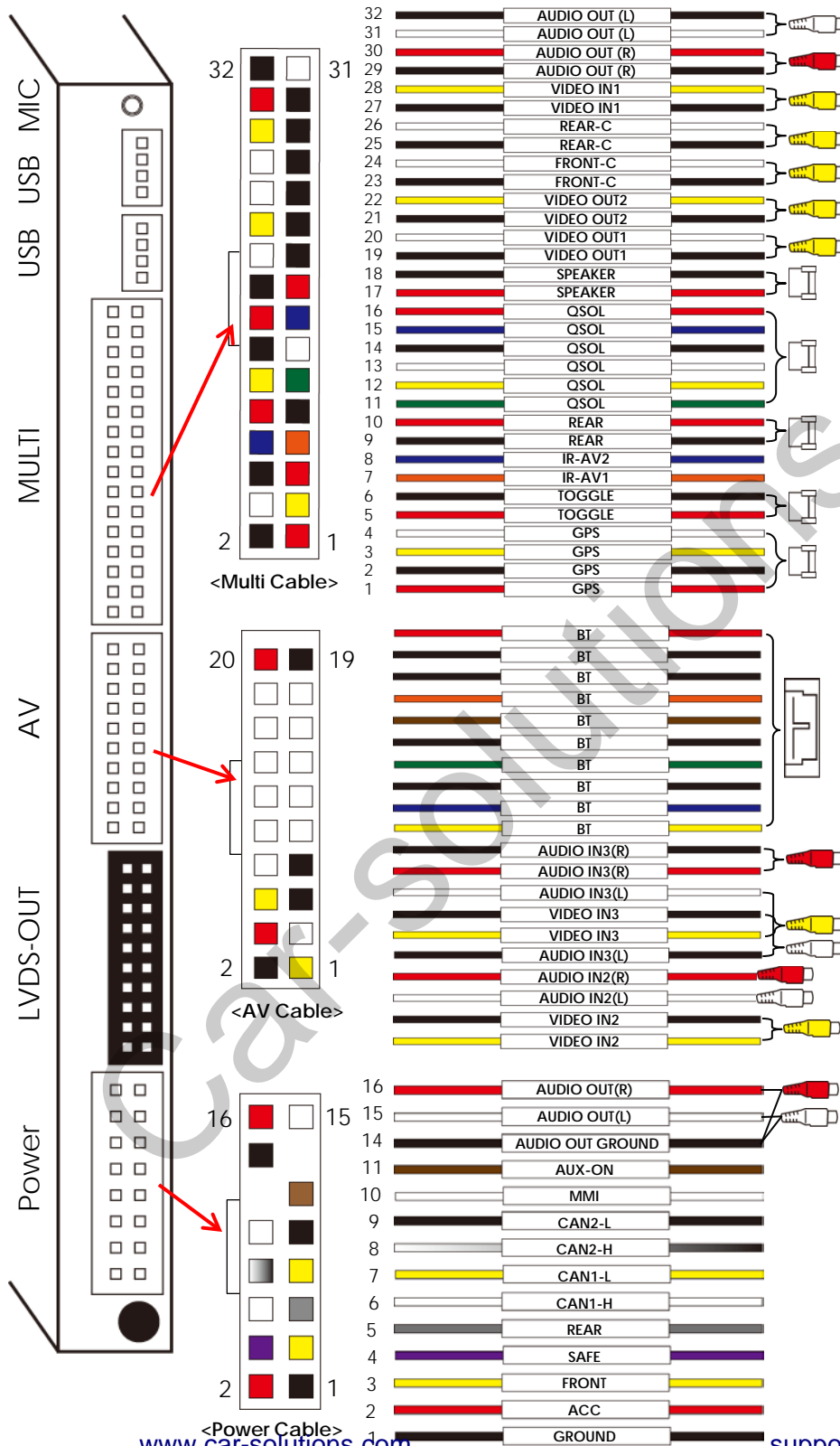
| PIN | Function | Dip S/W Selection |
|-----|------------------|---|
| 1 | | No Use |
| 2 | | No Use |
| 3 | | No Use |
| 4 | | No Use |
| 5 | | No Use |
| 6 | | No Use |
| 7 | | No Use |
| 8 | Bootling options | ON : Start with Q-ROI OFF : Start with OEM |

※ Please make sure to disconnect the power cable of the interface and reconnect the power cable again to apply the dip switch setting whenever changing DIP switch. Otherwise, DIP switch setting will not be applied.

5. Installation Diagram



6. Pin Specification of Connector



| | |
|--------------|--|
| AUDIO OUT(L) | AUDIO L Input |
| AUDIO OUT(R) | AUDIO R Input |
| VIDEO IN1 | VIDEO Input1 |
| REAR-C | Connect Rear Camera VIDEO |
| FRONT-C | Not available |
| VIDEO OUT2 | VIDEO Output2 |
| VIDEO OUT1 | VIDEO Output1 |
| SPEAKER | Connect with Speaker |
| QSOL | Not available |
| REAR | Connect Rear Camera |
| IR-AV2 | Connect external device IR Cable |
| IR-AV1 | Connect external device IR Cable |
| TOGGLE | Connect QDIS Button Cable (For switching mode) |
| GPS | Connect GPS Cable |

| | |
|--------------|----------------|
| BT | Not available |
| AUDIO IN3(R) | AUDIO R Input3 |
| AUDIO IN3(L) | AUDIO L Input3 |
| VIDEO IN3 | VIDEO Input3 |
| AUDIO IN2(R) | AUDIO R Input2 |
| AUDIO IN2(L) | AUDIO L Input2 |
| VIDEO IN2 | VIDEO Input2 |

| | |
|------------------|-----------------------------|
| AUDIO OUT(R) | AUDIO R Output |
| AUDIO OUT(L) | AUDIO L Output |
| AUDIO OUT GROUND | AUDIO Output GROUND |
| AUX-ON | Not available |
| MMI | Not available |
| CAN2-L | Connect with Car CAN2-Low |
| CAN2-H | Connect with Car CAN2-High |
| CAN1-L | Connect with Car CAN1-Low |
| CAN1-H | Connect with Car CAN1-High |
| REAR | Connect with Car Lame cable |
| SAFE | Not available |
| FRONT | Not available |
| ACC | Connect Car ACC |
| GROUND | Connect Car GROUND |

7. Cautions before Installation

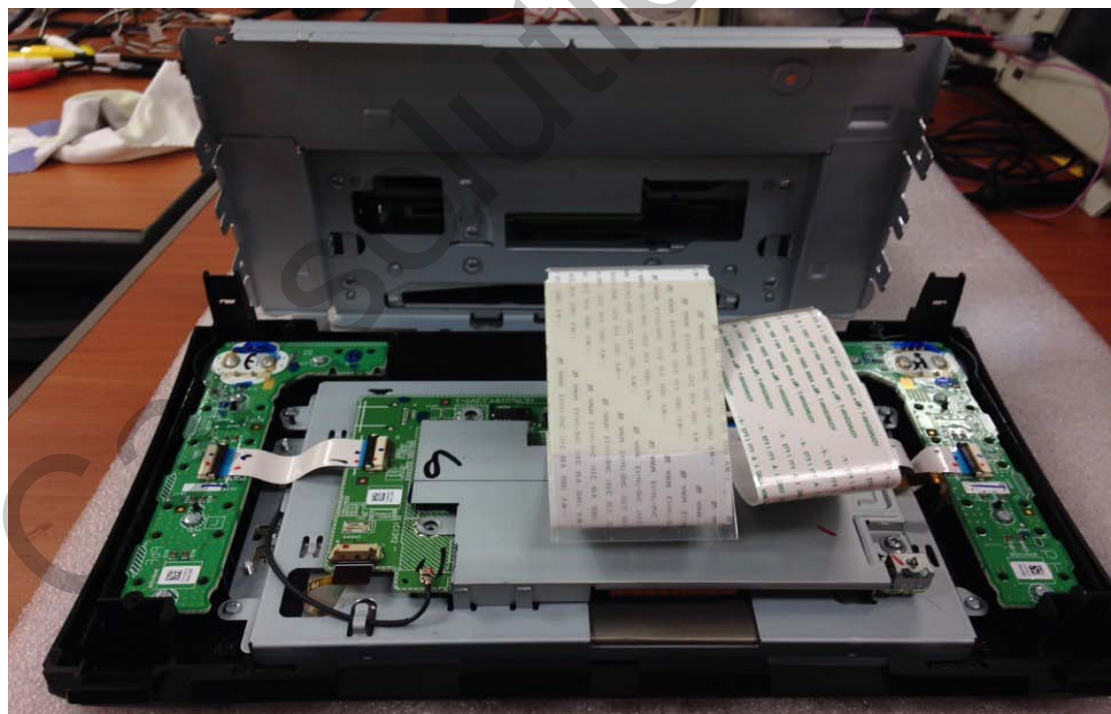
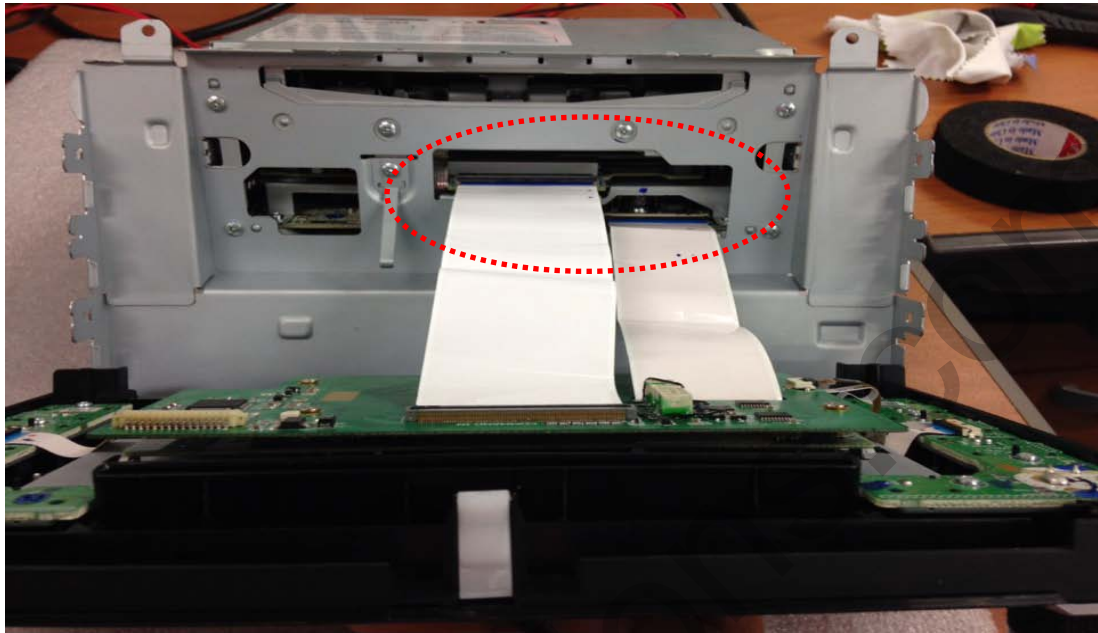
- Ignition key should be taken off before starting installation, interface power connection must be the last step in installation.
- Power cable should be separated when connecting interface.
- Should be no any electronic devices or magnetic pole around installation place.
- All steps of installation should be done by well-trained specialist.
- Dismantling without manufacturer's permission can not be guaranteed, (No permission to break attached label on the board.)
- Kindly check all parts are in the box, when receiving the product, if anything missing, inform to the supplier or manufacturer.
- Install GPS away from electromagnetic devices such as black boxes, Hi-Pass and etc.
- Advisable to Install GPS at the edge of dash board or a front window or a rear window.
- Install GPS antenna mounted on window or roof facing to Sky .
- According to our sales policy, any problems caused by user's mistake, careless can not be guaranteed.

8. Installation



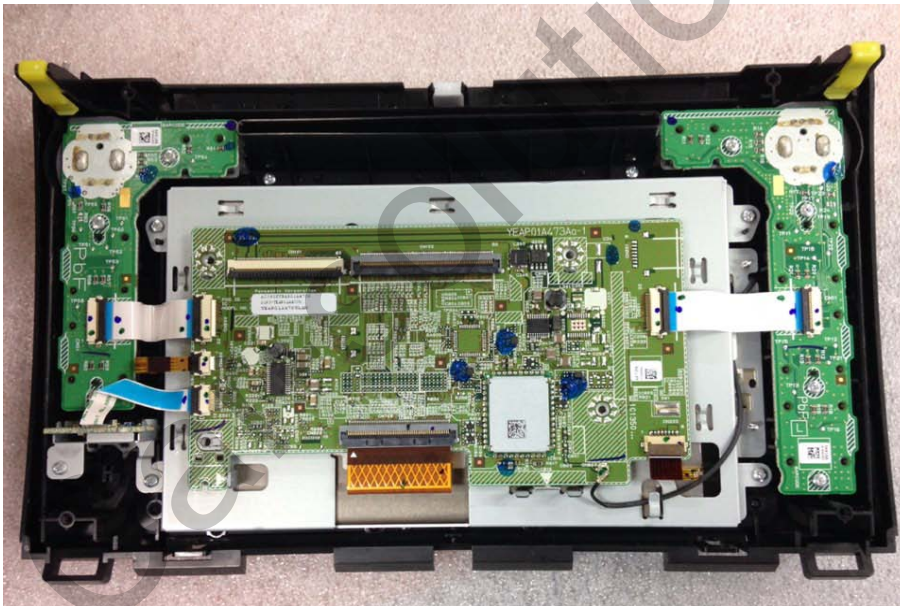
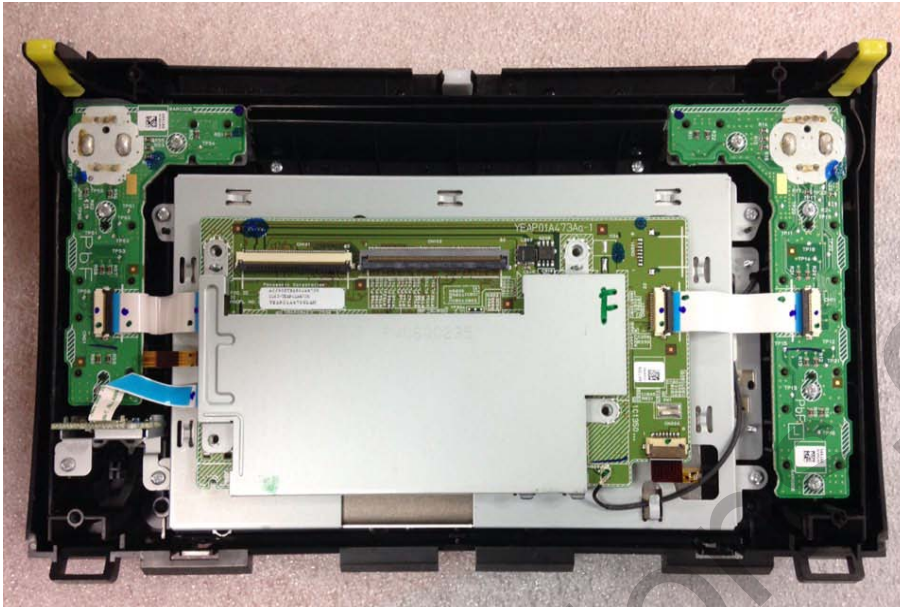
- Please dismantle a monitor and head unit as above.

8. Installation



- Disconnect a FFC cable connected between a command and a monitor.

8. Installation

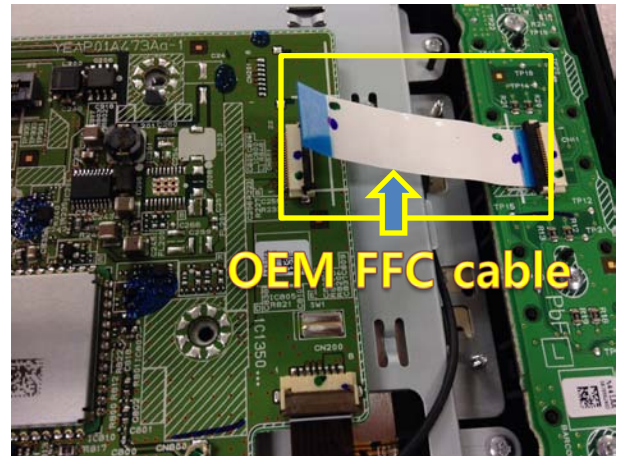
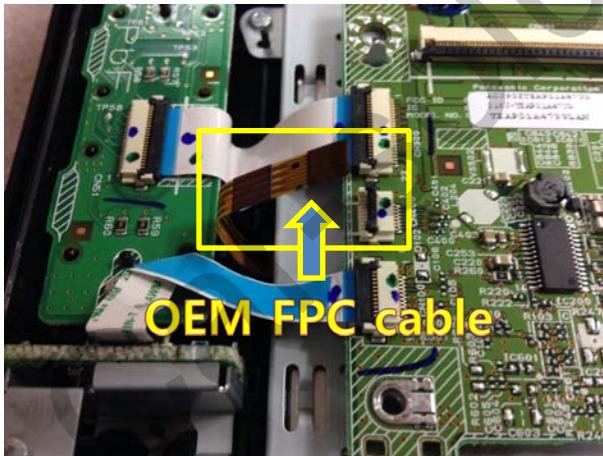


- Take away the cover of the board

8. Installation

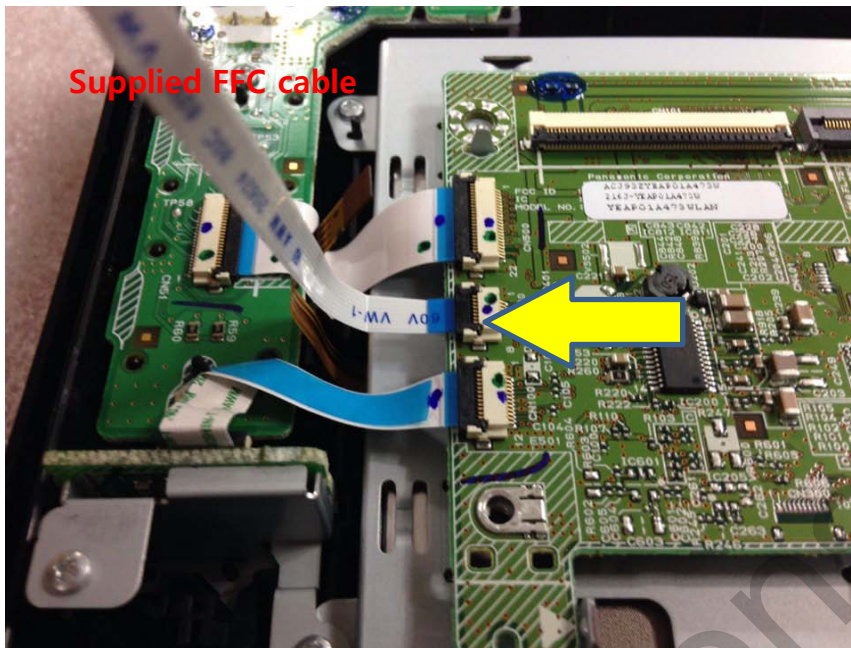


- Disconnect the OEM FFC from the connector.



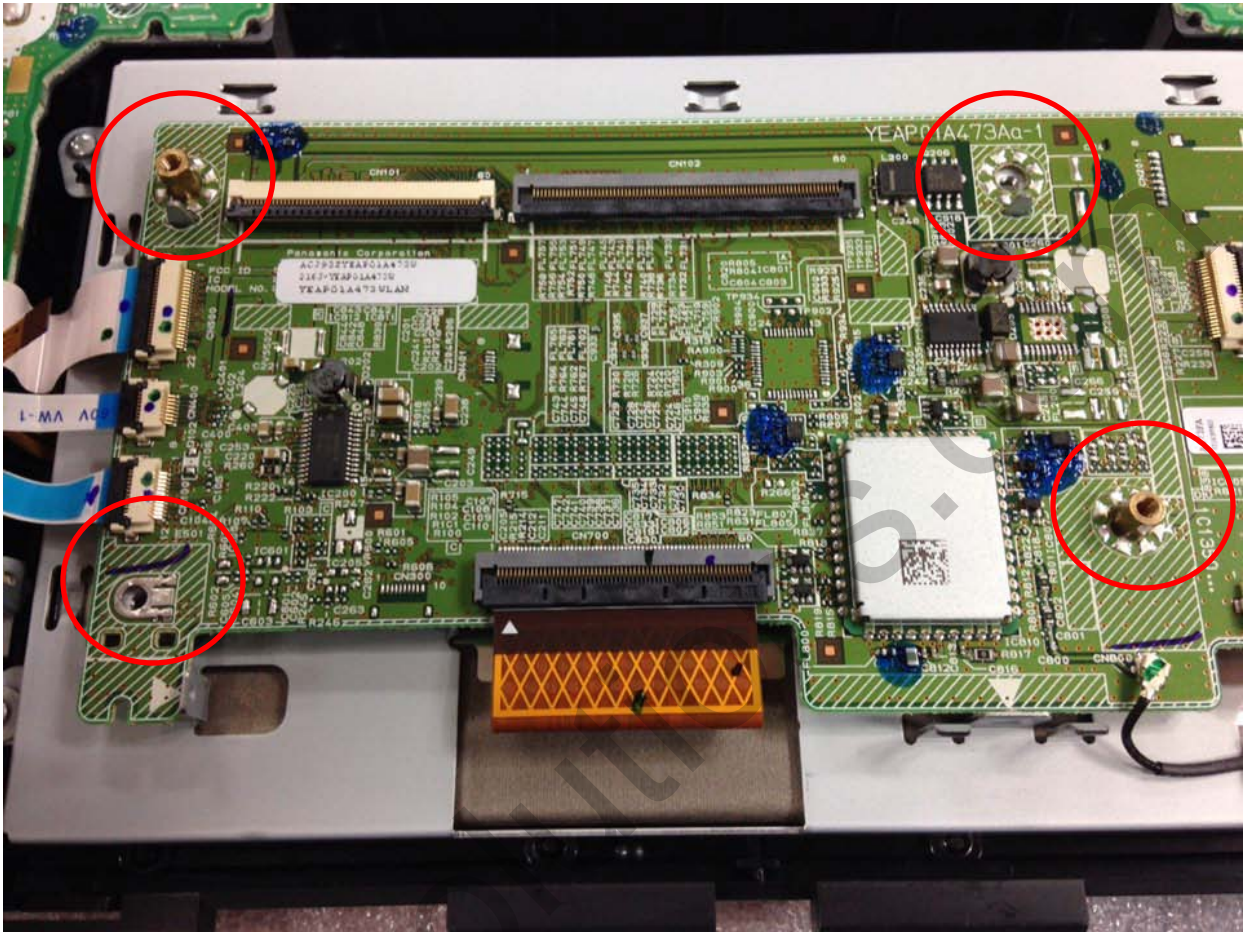
- Disconnect the OEM FFC from the connector.

8. Installation



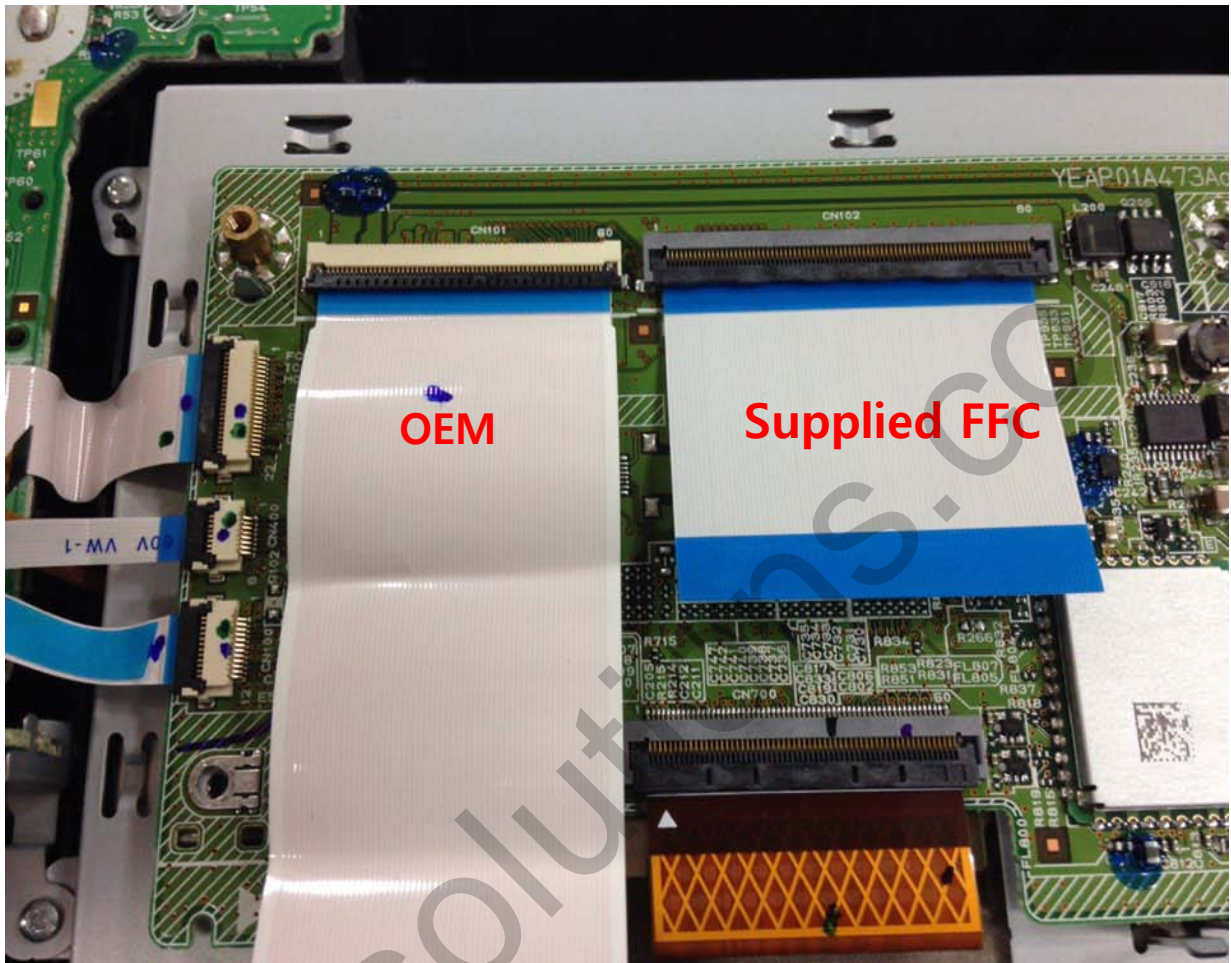
- Connect supplied FFC cable to connectors where OEM FFC were connected.

8. Installation



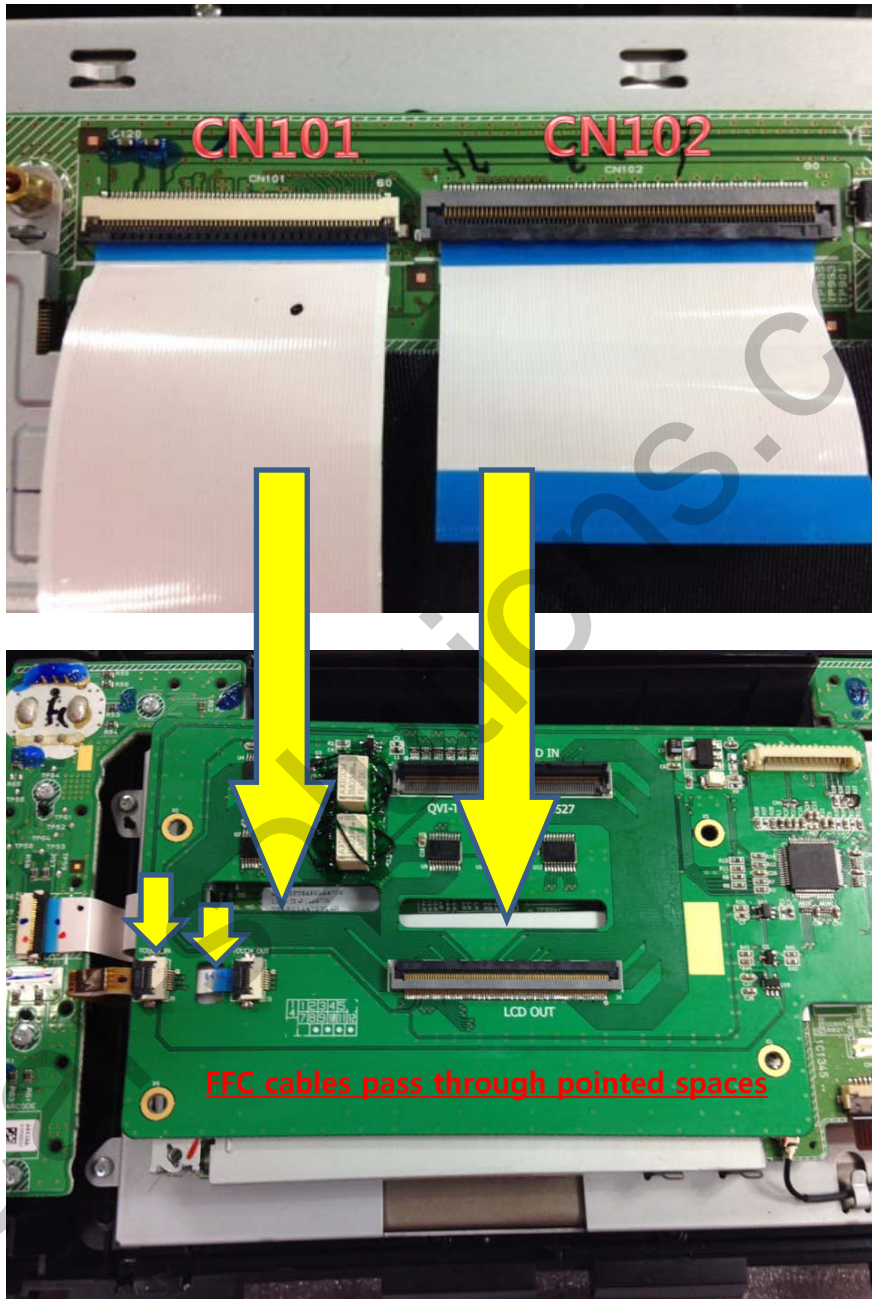
- Please screw 3 numbers of supports as above.

8. Installation



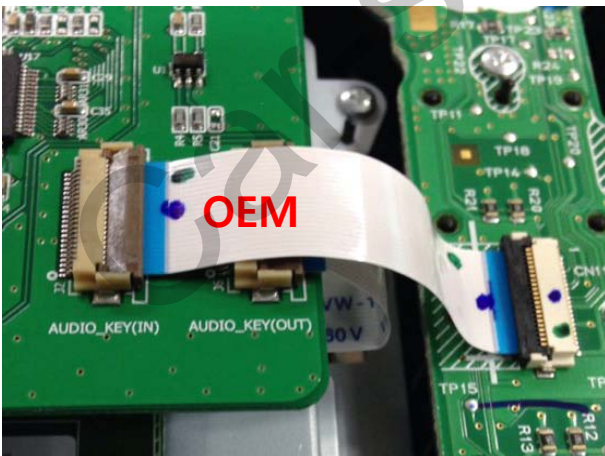
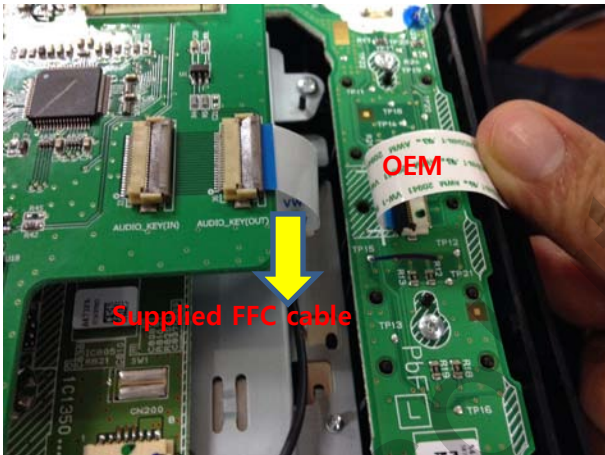
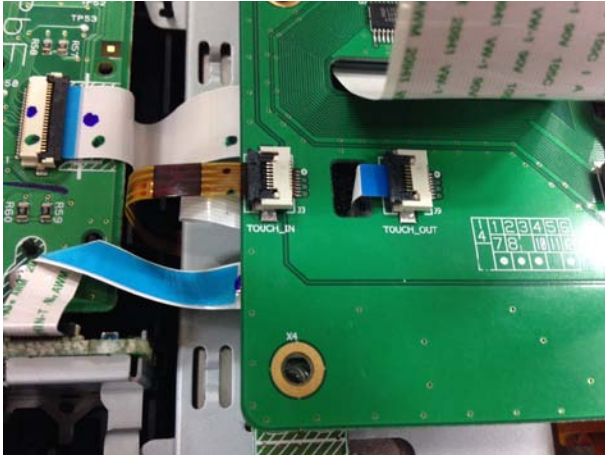
- Please connect FFC cables as above.

8. Installation



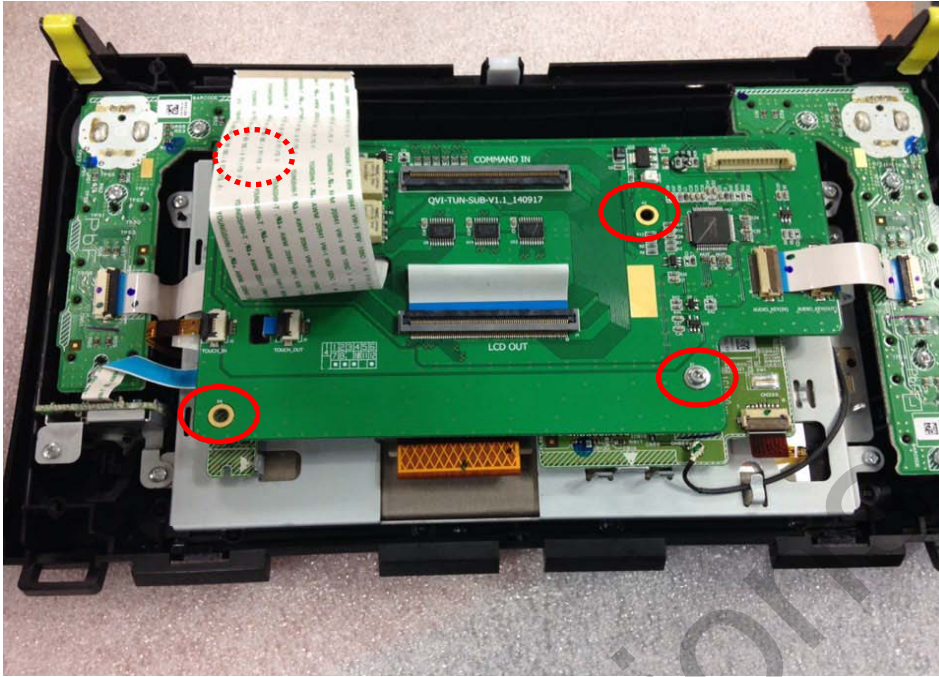
- ① Please the original FFC cables(CN101/CN102)pass through the supplied board.
- ② Please connect the original FFC cable(CN102) to LCD out.
- ③ Please connect OEM FFC to touch in and supplied cables to touch out.

8. Installation

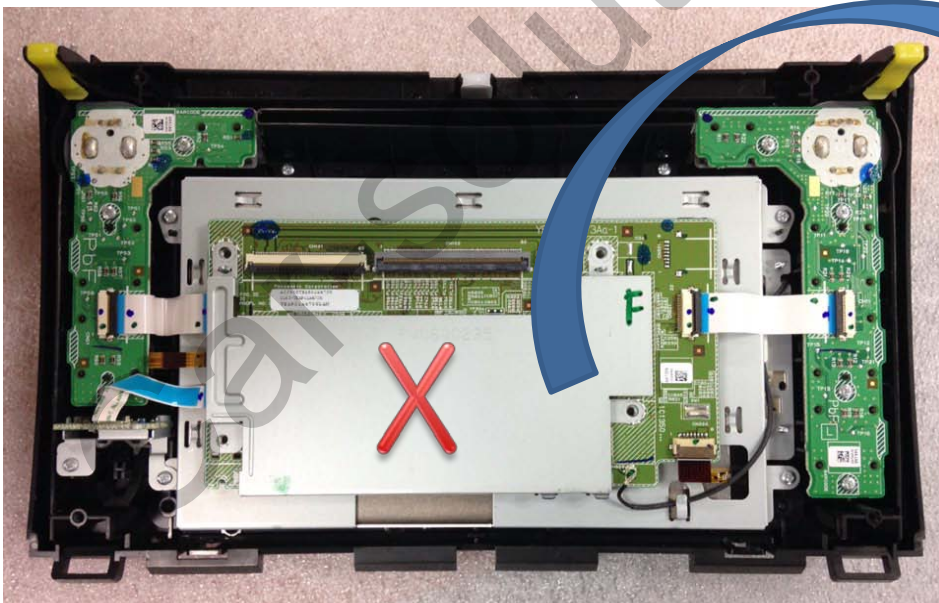


- Please connect FFC cables

8. Installation



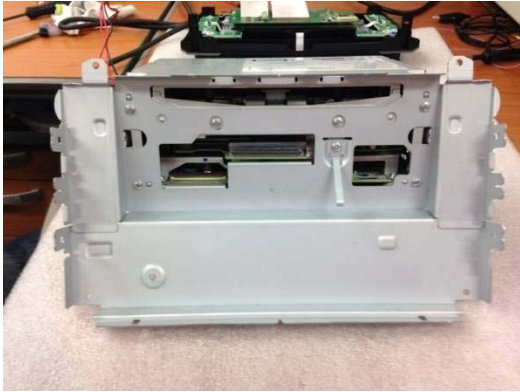
- Please screw bolts



✗ Remove the cover

- Please do not put the cover of the board

8. Installation



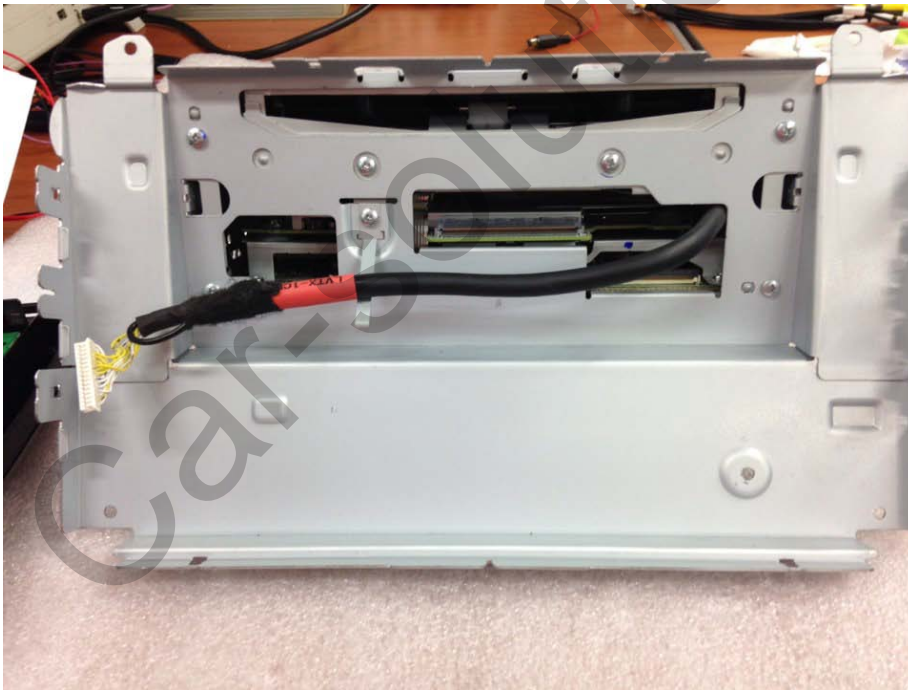
- Please dismantle head unit as above.

8. Installation



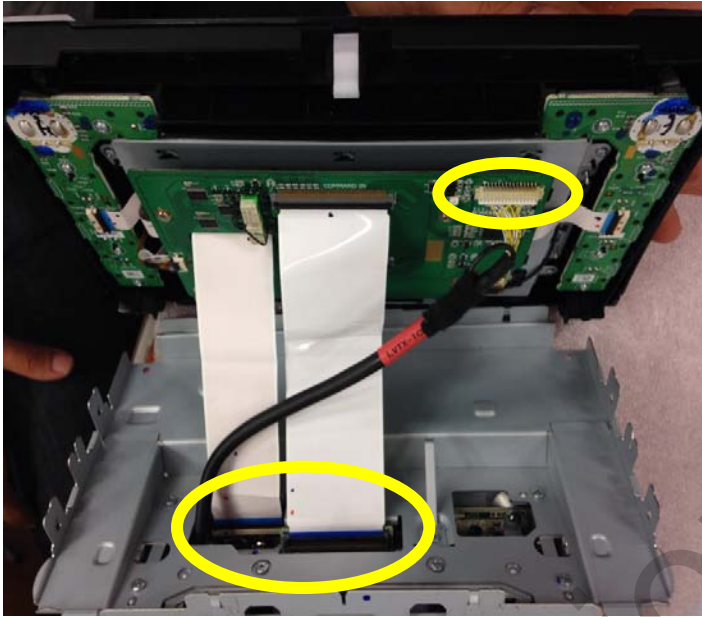
- ① Please dismantle a Fan as above.
- ② Pass through the supplied LVDS cable on the top left of Fan.
- ③ Reassemble the unit

8. Installation



- After reassembling the unit

8. Installation



- Connect FFC cables and LVDS cable .

9. Quality Warranty

This product has been tested and have passed under our strict quality control. If the failure occurred due to the carelessness of workmanship within one year after the purchase, we are responsible to repair free of charge.

Please bring this warranty to dealer whom you purchased this product from at the repair time. Should this warranty not presented, repair charged will be on customer. Please keep this warranty card.

| Warranty | | | |
|-----------------|---------|-----------------------------|--|
| Product name | QROI | | |
| Warranty period | 1 year | Purchase date (yy/mm/dd) | |
| Customer | Address | | |
| | TEL | | |
| | Name | | |
| Dealer | Address | | |
| | Name | | |