

# Installation Manual

## Q-ROI-AUDI A3

---

# Warning / Precautions!

---



Warning

- Do not modify, dismantle or unintended operation this system outside Q-ROI After Sales. Damage occurred by unintended operation may cause Q-ROI After Sales service void.



Warning

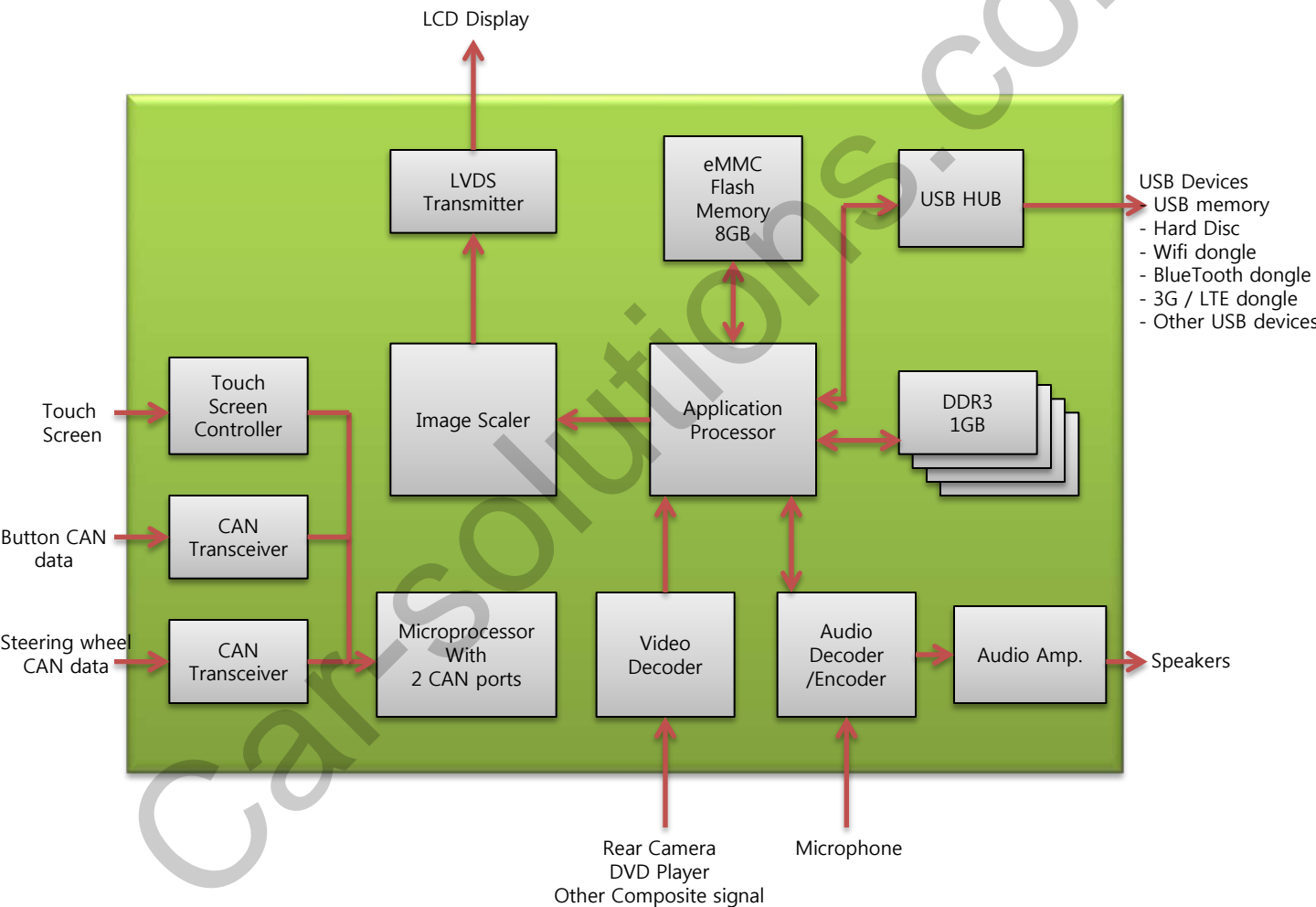
- Always wear seatbelt. When the vehicle is suddenly stop can cause injury.
- Remove dust, oil, and waste on the display.
- Incidental damages (including, without limitation, consequential damages due to the use of this unit and the dead loss of business profit, changes, loss of memory contents, etc) will not be taken responsibility.
- Any function that requires your prolonged attention should only be performed after coming to a complete stop. Always stop the vehicle in a safe location before performing these functions. Failure to do so may result in an accident.
- The engine is off while the system operates for long time, battery may be discharged.
- This product is not a substitute for your personal judgment. Any route suggested by this navigation system may never supersede any local traffic regulation. Do not follow route suggestions if the navigation system instructs you to perform an unsafe or illegal maneuver.

# 1. General Spec

---

|                 |  |
|-----------------|--|
| OS              | Android 4.2.2 (Jelly Bean)   |
| CPU             | Telechips TCC8930 (1GHz Cortex A9 DualCore)  |
| Display         | OEM LCD  |
| Internal Memory | DDR3 1GB RAM + 8GB eMMC  |
| External Memory | SDHC Slot Support (up to 64GB)   |
| Function        | A/V Input x 3,<br>Rear Cam Input x 1,<br>CAN(Controller Area Network) x 2,<br>Mic x 1,<br>External Speaker x 1 (mono),<br>External Audio Out x 1(Car Aux), |
| Output          | LVDS ( thru Video Interface),<br>RGB (thru Sub-Board)  |
| Touch Type      | Resistive Touch  |
| GPS             | SiRF   |
| Resolution      | 800*480  |
| USB             | USB 2.0 x 5 (USB x 4, OTG USB x 1)   |
| Input Voltage   | 12V  |
| Temperature     | operating 0 C to 60 C  |
|                 | Storage -20 C to 60 C  |
| Languages       | multi-languages  |

## 2. System Diagram



# 3. Components



USB cable \* 2ea  
(HARETC0027)



3G dongle \* 1ea(Option)  
(ETCETC0116)



WIFI dongle \* 1ea(Option)  
(ETCETC0110)



LVDS cable\* 1ea  
(HALVDSC0024)



Power cable 16P \* 1ea  
(HPOWER0041)



GPS Antenna \* 1ea  
(GPSANT0006)



MODE switch cable\* 1ea  
(HARETC0001)



Multi cable \* 1ea  
(HARETC0068)



AV/BT Cable \* 1ea  
(HAVCAB0016)



SD extension cable\* 1ea  
(HARETC0080)



REAR CAMERA cable \* 1ea  
(HARETC0002)



Speaker \* 1ea  
(SPEAKE0001)



Microphone cable \* 1ea  
(MICPHO0001)

# 3. Components

---



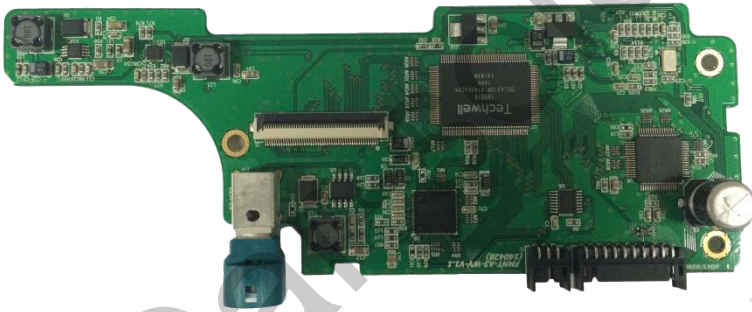
LCD \* 1ea  
(LCDPAN0009)



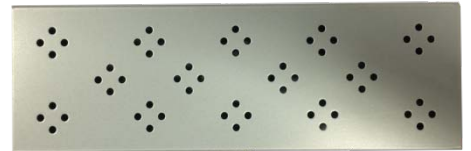
Touch Panel \* 1ea



Finished material \* 1ea  
(MOLDIF0176)



FMNT board \* 1ea



OEM board case \* 6ea  
(PRESET0182)



Screw \* 6ea



Screw \* 6ea

# 4. Original Button Usage

## 4.1 Dynamic\_5.8inch, 7inch

### ※ MMI button

※ Switch to OEM : Short Press NAV button



※ Q-ROI RESET :  
Long press BACK button

※Buttons of switching to OEM : Short Press RADIO, MEDIA, BACK, MENU, TEL

### ※ Steering wheel button



※ Q-ROI RESET : Long press Voice  
button



# 4. Original Button Usage

## 4.2 Entry\_5.8inch

### ※ MMI Button

※ Switch to OEM : Short Press TONE button



※ Q-ROI RESET :  
Long press BACK button

※Buttons of switching to OEM : Short Press RADIO, MEDIA, BACK, MENU, CAR

### ※ Steering wheel Button



※ Q-ROI RESET : Long press Voice  
button



# 5. Cautions before Installation

---

- Ignition key should be taken off before starting installation, interface power connection must be the last step in installation.
- Power cable should be separated when connecting interface.
- Should be no any electronic devices or magnetic pole around installation place.
- All steps of installation should be done by well-trained specialist.
- Dismantling without manufacturer's permission can not be guaranteed, (No permission to break attached label on the board.)
- Kindly check all parts are in the box, when receiving the product, if anything missing, inform to the supplier or manufacturer.
- Install GPS away from electromagnetic devices such as black boxes, Hi-Pass and etc.
- Advisable to Install GPS at the edge of dash board or a front window or a rear window.
- Install GPS antenna mounted on window or roof facing to Sky .
- According to our sales policy, any problems caused by user's mistake, careless can not be guaranteed.

# 6. Installation

## 6.1 Dip Switch (Main board))

### Dip Switch

### Car model



: Dynamic\_5.8inch



: Entry\_5.8inch



: Dynamic\_7inch



: Dynamic\_5.8inch  
(CD Changer : Continental model)



: Entry\_5.8inch  
(CD Changer : Continental model)

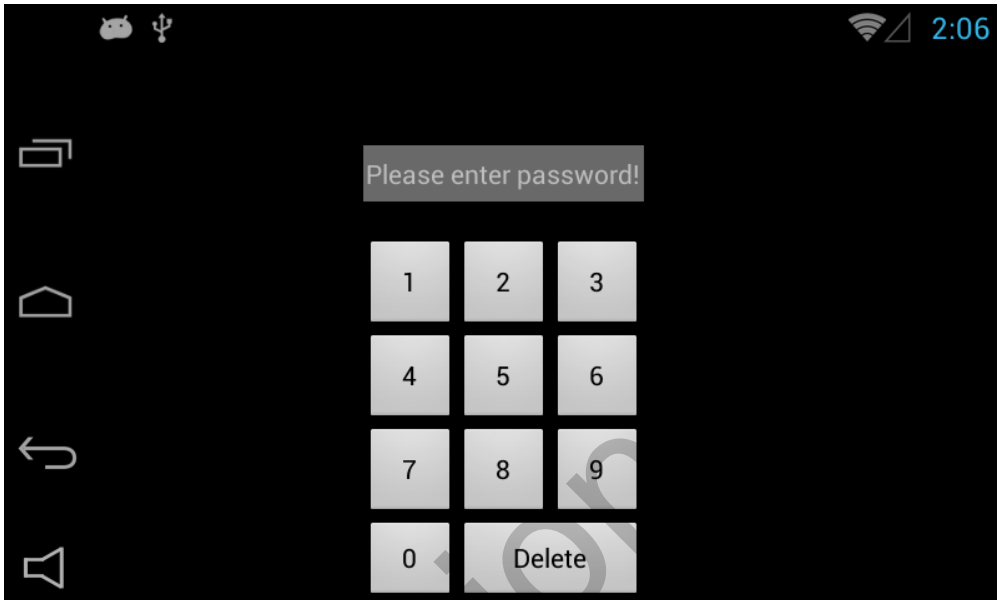
※ Set up Dip switch #8 ON : Car with OEM Navigation

※ Please make sure to disconnect the power cable of the interface and reconnect the power cable again to apply the dip switch setting whenever changing DIP switch. Otherwise, DIP switch setting will not be applied.

# 6. Installation

---

## 6.2 Factory Menu



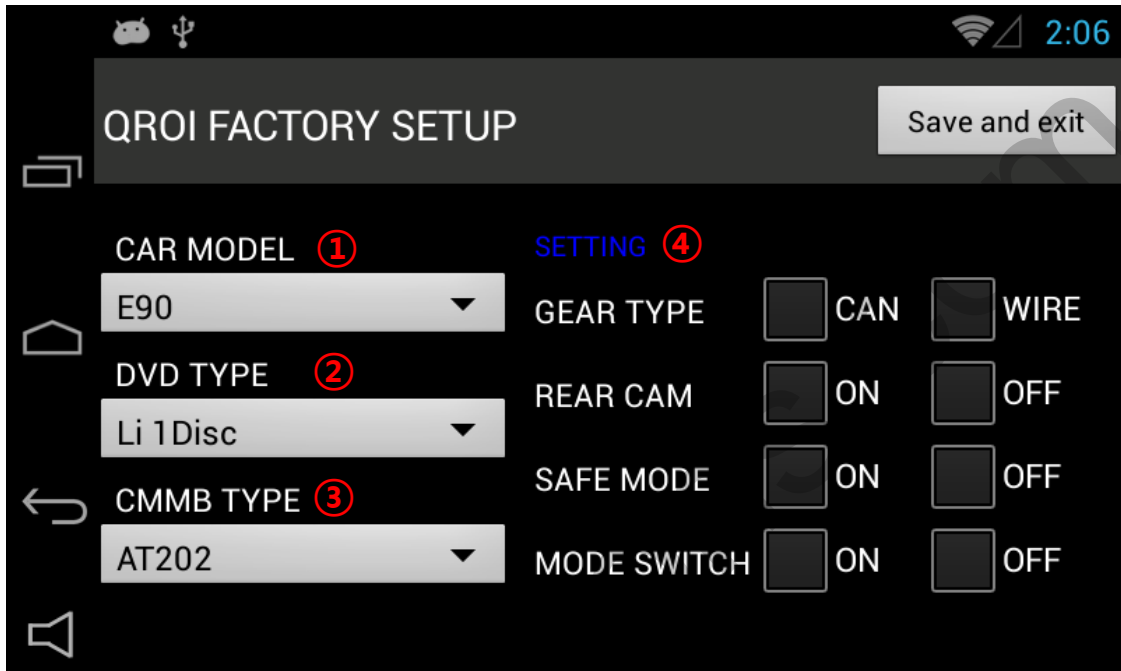
※ APPS→FACTORY SETTING

- ① Put Password and change program upgrade and set-up of external device. (Only Installers are authorized)

※ Please contact the manufacturer to get Password.

# 6. Installation

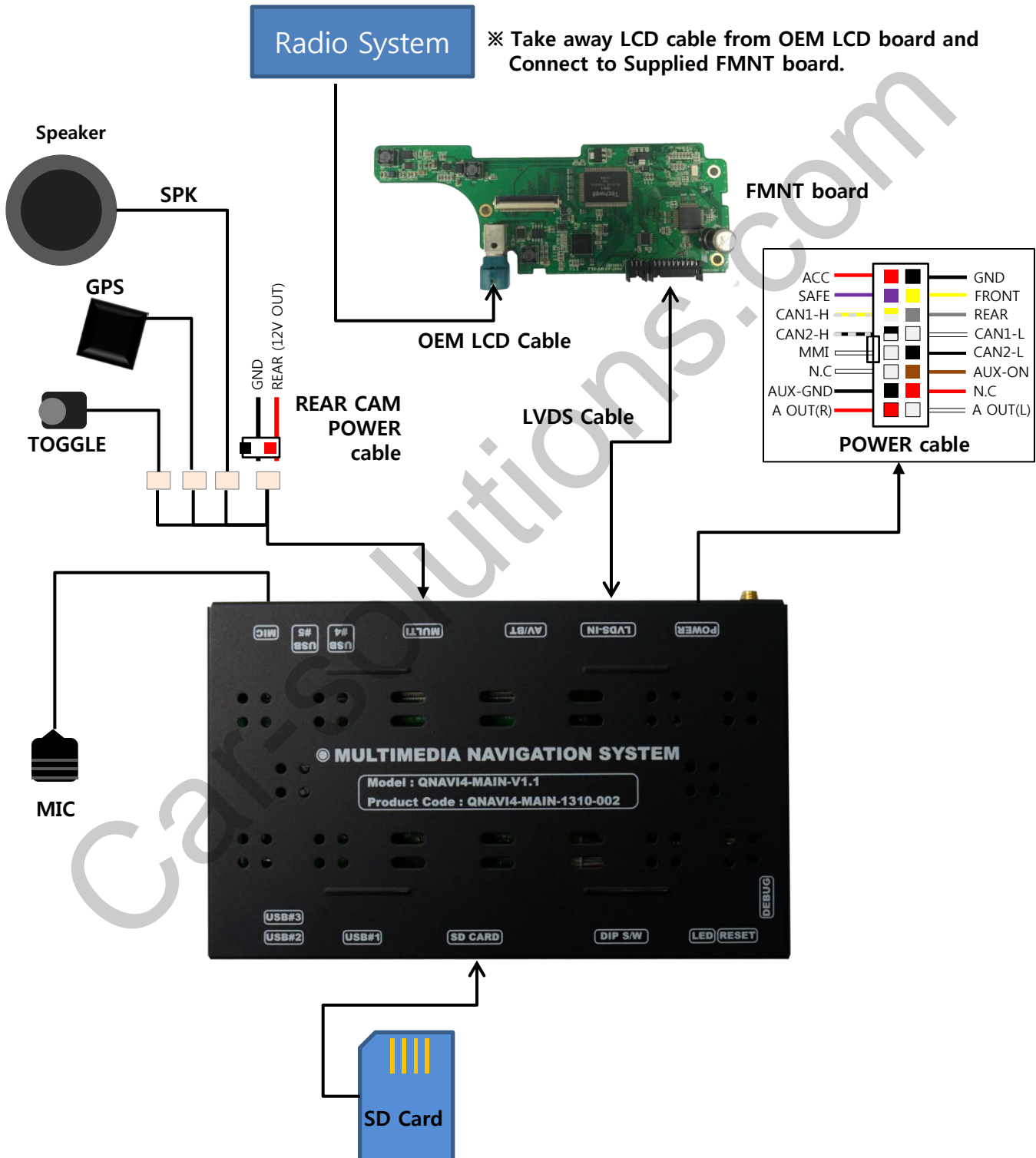
## 6.2 Factory Menu



- ① CAR MODEL : No use
- ② DVD TYPE : Only for DVD connected to A/V  
(Connect IR-AV1 to DVD to use DVD as touch Screen)
- ③ CMMB SELECT : Select DTV model ( Only Chinese)
- ④ SETTING
  - GEAR CHECK TYPE : Detecting rear camera via either CAN or Rear Lamp.
  - REAR CAM : Put "On" – External rear camera  
Put "Off " – OEM Camera
  - SAFE MODE : Either Enable or Unable to watch Video while driving
  - MODE SWITCH : NO use
- ⑤ SAVE & EXIT : Save and Reboot

# 6. Installation

## 6.3 Installation Diagram



# 7. Installation

## 7.1 Replace LCD



- ① Dismantle the OEM monitor and loosen the volts.
- ② Take away the plastic molding part and loosen the volts.



# 7. Installation

---

## 7.1 Replace LCD



- ① Take away Original LCD with a tool.
- ② Refer to above photos.

# 7. Installation

---

## 7.1 Replace LCD



① Assemble LCD and Fasten with supplied volts.

※ Pull the FPC cable of LCD under the bracket.

# 7. Installation

---

## 7.1 Replace LCD



- 
- ① Assemble separated plastic molding part.

# 7. Installation

---

## 7.1 Replace LCD



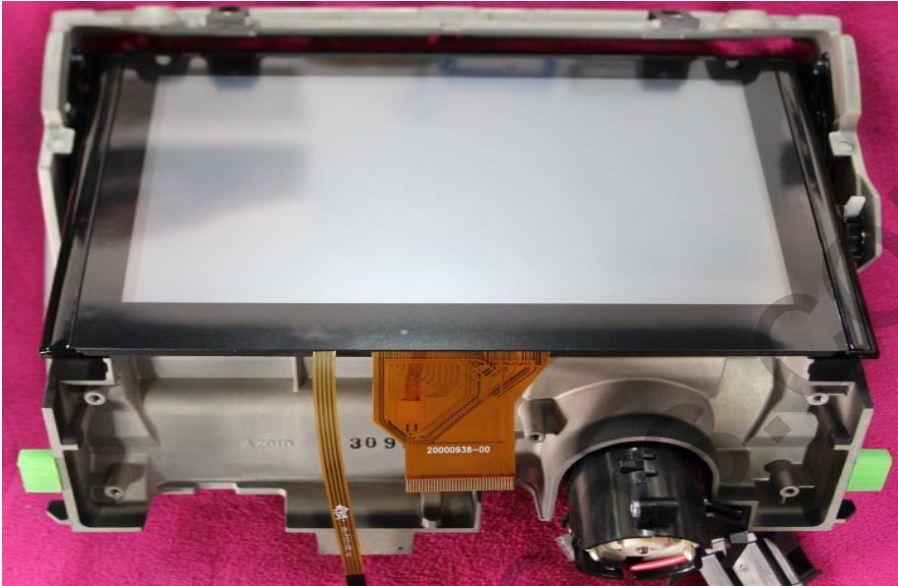
- 
- ① Attach supplied touch screen.  
(Refer to above photos)



# 7. Installation

---

## 7.1 Replace LCD

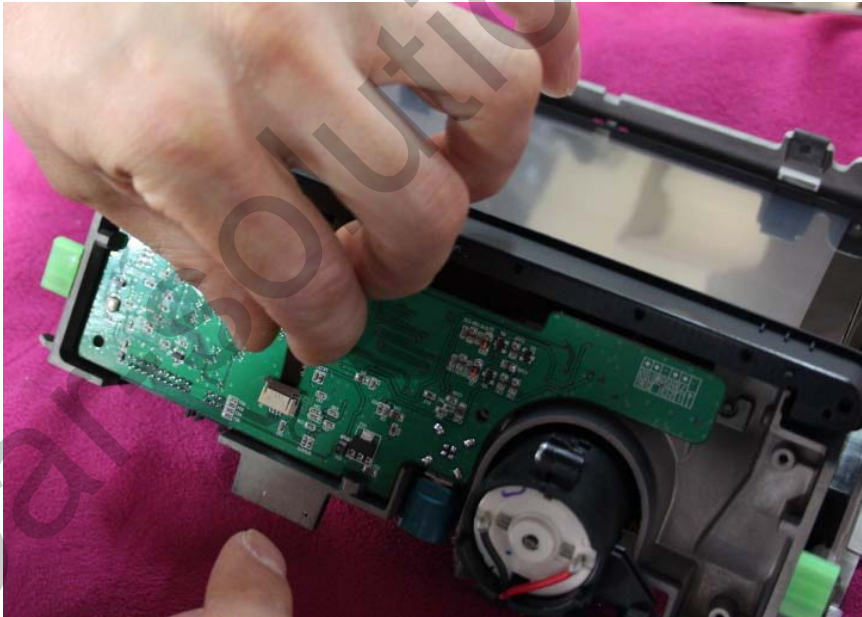
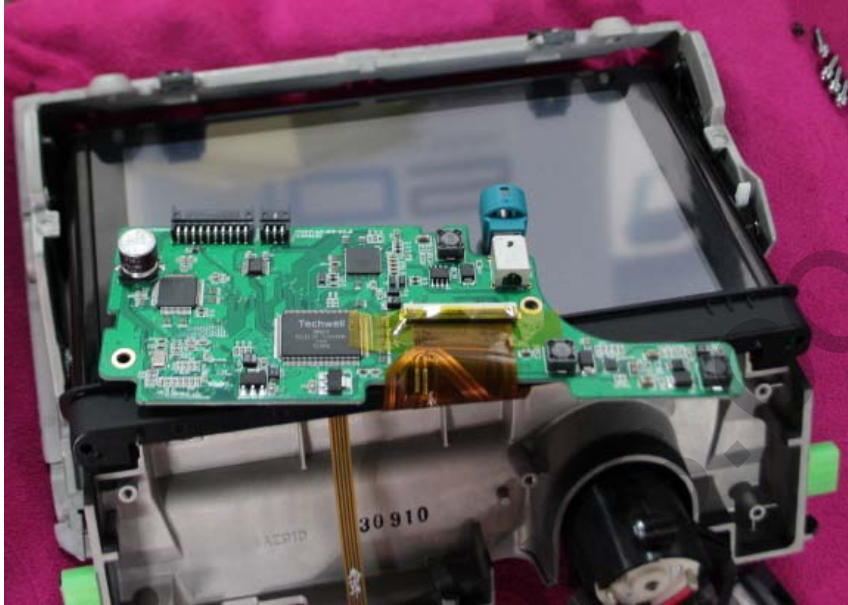


- ① Assemble original bracket and put the FPC cable and touch cable under the bracket. (Refer to photos).

# 7. Installation

---

## 7.1 Replace LCD



① Connect the FPC cable to Sub-board.

Connect the Touch cable to opposite side of sub-board.



# 7. Installation

---

## 7.1 Replace LCD

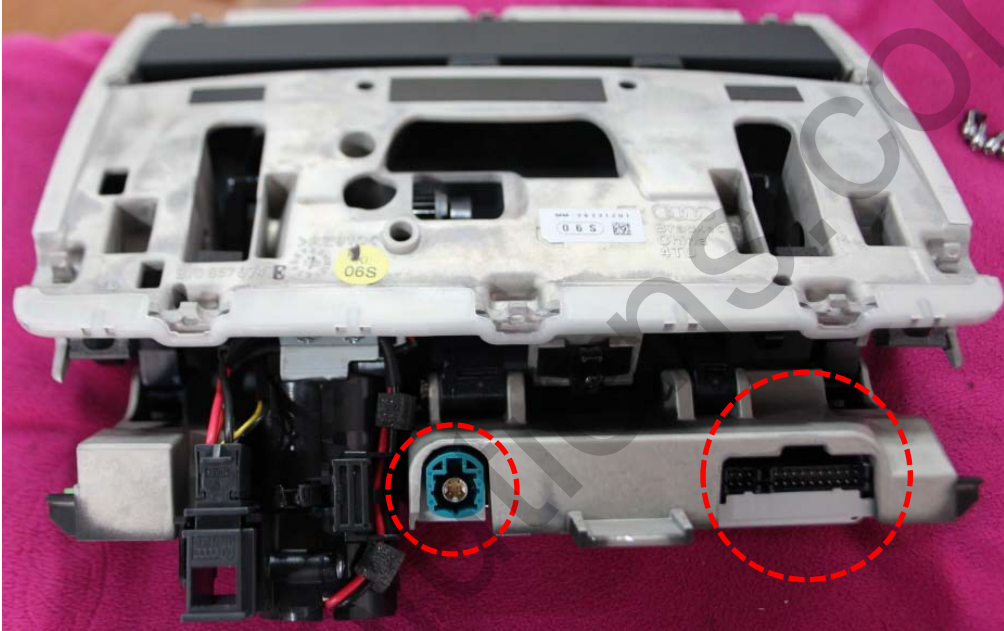


- ① In case the touch cable is too long, you can fold the cable with a tape (Refer to above photos)
- ② Reassemble bracket located under the monitor.

# 7. Installation

---

## 7.1 Replace LCD

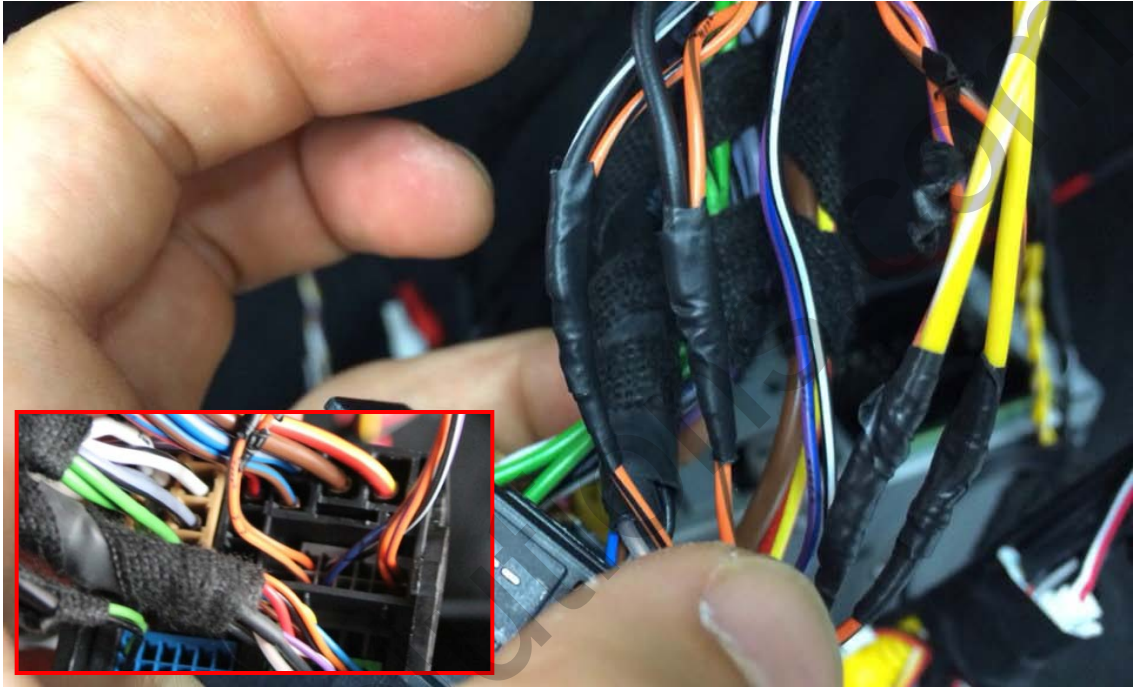


- ① After Assembly, you will be able to see two connectors.
  - ② Connect the left side round connector to original LCD Cable and Connect the square connector to supplied LVDS cable.
- ※ Connect OEM cables to OEM board and put OEM board into supplied metal case to keep.

# 8. Installation

---

## 8.1 Connection of CAN Wires



You will be able to find OEM CAN Wires behind Glove Compartment.

Connect CAN-High(Orange + Purple) to supplied CAN1-H(Yellow + White)  
Connect CAN-Low(Orange + Brown) to supplied CAN1-L(Yellow)

Connect CAN-High(Orange + Black) to supplied CAN2-H(Black + White)  
Connect CAN-Low(Orange + Brown) to supplied CAN2-L(Black)

# MEMO

---

Car-solutions.com

## 9. Quality Warranty

---

This product has been tested and have passed under our strict quality control. If the failure occurred due to the carelessness of workmanship within one year after the purchase, we are responsible to repair free of charge.

Please bring this warranty to dealer whom you purchased this product from at the repair time. Should this warranty not presented, repair charged will be on customer. Please keep this warranty card.

| Warranty        |         |                             |  |
|-----------------|---------|-----------------------------|--|
| Product name    | QROI    |                             |  |
| Warranty period | 1 year  | Purchase date<br>(yy/mm/dd) |  |
| Customer        | Address |                             |  |
|                 | TEL     |                             |  |
|                 | Name    |                             |  |
| Dealer          | Address |                             |  |
|                 | Name    |                             |  |