

Benz 2010 PAS TC2



NTG 4.5

Spec

1. Input Spec. (MULTI VIDEO INTERFACE)

- 1 x Analog RGB Input (Navigation System output)
- 1 x CVBS(REAR CAMERA) Input. (Rear camera source)
- 1 x CVBS(FRONT CAMERA) Input. (Front camera source)
- 1 x LVDS Input. (Car Command System)

2. Output Spec.

- 1 x LCD Output (LCD Operation)

3. Power Spec.

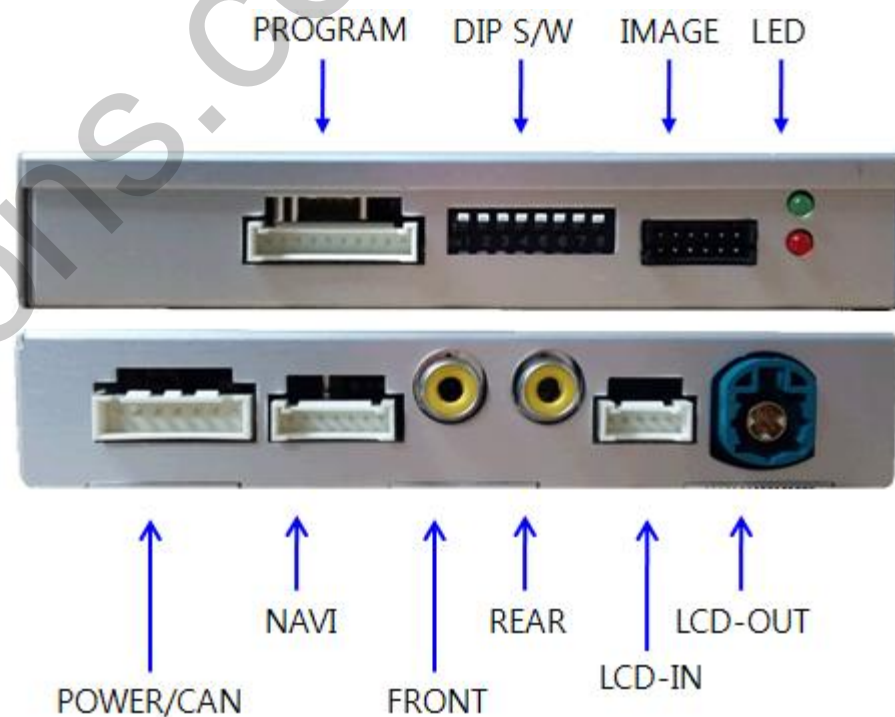
- Input Power : 8VDC ~ 24VDC
- Consumption Power : 12Watt, Max

4. Switch Input mode

- Possible to select CAR model while switching mode by DIP S/W
- By button on the Commander in the car via CAN

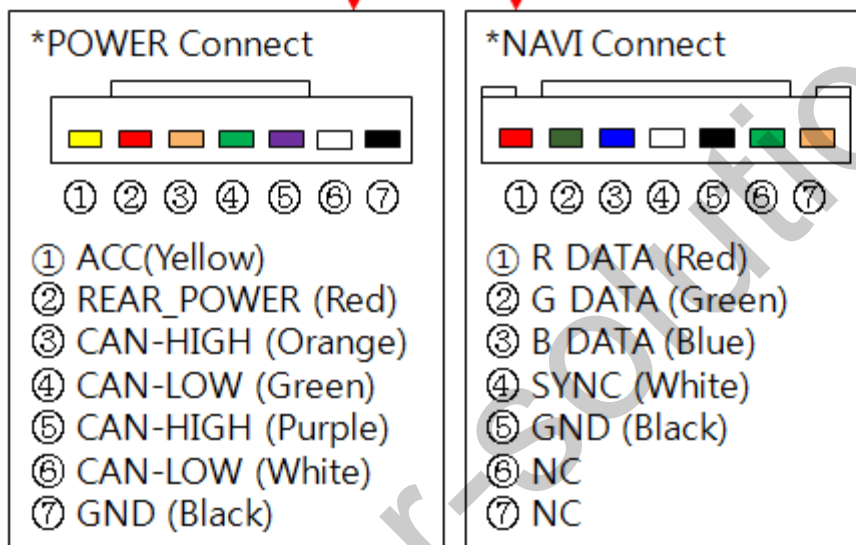
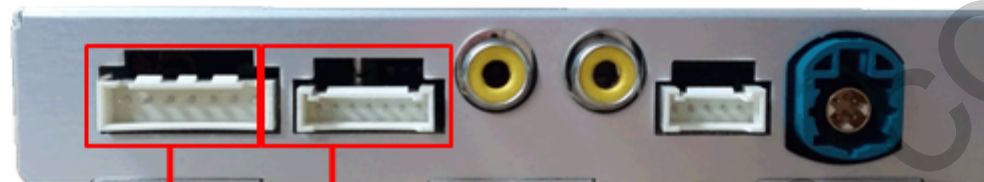
About Interface

- Dimension / External Appearance



* This can change under manufacturer's circumstance

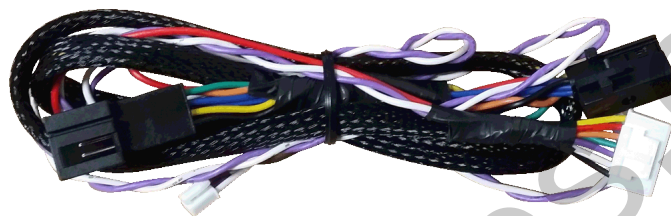
Connector Pin Assignment



Product Composition



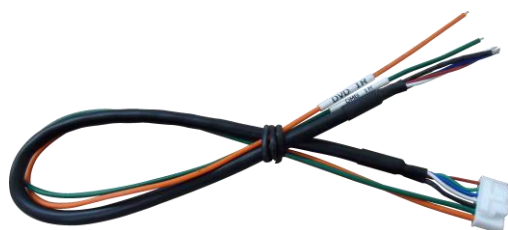
Interface Board 1 EA



Power Cable 1 EA



LVDS OUT Cable 1 EA
(Singapore/ 1m)



RGB (7PIN) 1 EA

Car-solutions.com

DIP S/W Setting

※ ON : DOWN , OFF : UP

PIN	FUNCTION	DIP S/W Selection
1	NAVI	ON : Not Use OFF : Use
2	VIDEO MODE	ON : Not Use OFF : Use
3	N.C	
4	N.C	
5	N.C	
6	CAR TYPE SELLECTION	Check Right photo
7		
8		

DIP S/W Example



7" Model



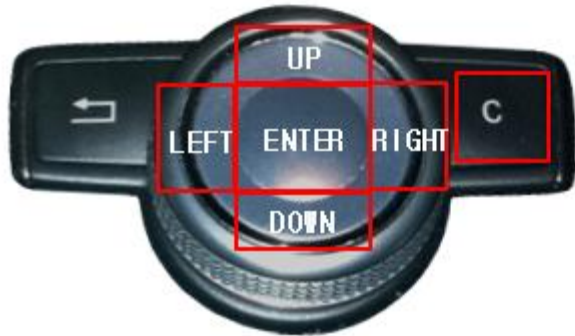
5.8" Model

I-Drive Control

Mode change / DVB-T control



OSD Menu



C	Push 6 Sec = OSD ON Push short = MENU EXIT
ENTER	Item Selection, Value Selection
UP	Item up Increase selected value
RIGHT	First->Second->Third Menu move Third Menu에서 Item down Increase selected value
DOWN	Item down Decrease selected value
LEFT	Third->Second->First Menu move Third Menu에서 Item up Decrease selected value

MENU	Config	Mode State
Config	NAVI-RGB	KD900(WVGA)
Option	NAVI-AV	Default
Image	DVD	ELT-980XU Slim
Screen	DVB-T(DMB)	ELT-DVBT20
Parking	BlackBox	Default

First Menu

Second Menu

Third Menu

OSD Menu

► OSD Setting –Config Mode

MENU	Config	NAVI
Config	NAVI-RGB	Default
Option	NAVI-AV	Default
Image	DVD	ELT-980XU Slim
Screen	DVB-T (DMB)	ELT-DVBT20
Parking	BlackBox	Default

- NAVI(GPS) - RGB : Model Select

- ① Default
- ② GI-4000
- ③ GI-8000
- ④ PANASONIC
- ⑤ KD-900
- ⑥ PURENAVI8
- ⑦ SINGAPURA

- NAVI – AV : Model Select

- ① Default

- DVD : Model Select

- ① EliteXtrem. ELT-980XU SLIM
- ② SANYO
- ③ LCKT
- ④ NECVOX (DVA-3206)
- ⑤ AMPIRE (DVX-101)

- DTB-T : Model Select

- ① EliteXtrem. ELT-DVBT20
- ② NETWORK. NET-770
- ③ MEDIALIFE
- ④ PANASONIC
- ⑤ PIONEER
- ⑥ GEX-700DV
- ⑦ PORTUGAL

- BlackBox : Default

- RearCam : Default

- FrontCam : Default

- Reset :

- ① Excute
- ② Cancele

OSD Menu

► OSD Setting –Option Mode

MENU	Option	NAVI
Config	RearCam-Type	ExtDevice
Option	RearCam-Power	Off
Image	FrontCam-Type	ExtDevice
Screen	FrontCam-Power	Off
Parking	Safe Mode	Off

- **Safe Mode** : Default

- **RearCam-RcvOpt**

- ① On : Show Frontcam 25sec after rear mode.
- ② Off: Default

- **Reset**

- ① Excute
- ② Cancele

- **RearCam- Type**

- ① OEM: Original Rear camera
- ② ExtDevice : Use aftermarket Rear camera

- **RearCam- Power**

- ① ON : Rear camera get +12V consistently
- ② AUTO: Rear camera get +12V when reverse gear on.
- ③ OFF: Shut out the power supply.

- **FrontCam- Type**

- ① OEM: Original Front camera
- ② ExtDevice : Use aftermarket Front camera

- **FrontCam- Power**

- ① ON : Front camera get +12V consistently
- ② AUTO: Front camera get +12V when reverse gear on.
- ③ OFF: Shut out the power supply.

OSD Menu

▶ OSD Setting –Image Mode

MENU	Image	NAVI
Config	Brightness	50
Option	Contrast	50
Image	Saturation	50
Screen	Hue	50
Parking	Sharpness	25

- Brightness
- Contrast
- Saturation
- Hue
- Sharpness
- Color – RED
- Color – Green
- Color – Blue
- Reset
 - ① Excute
 - ② Cancele

▶ OSD Setting –Screen Mode

MENU	Screen	NAVI
Config	Horizontal	50
Option	Vertical	50
Image	Scale X Up	50
Screen	Scale X Down	50
Parking	Scale Y Up	50

- Horizontal
- Vertical
- Scaler X Up
- Scaler X Down
- Scaler Y Up
- Scaler Y Down

OSD Menu - Parking line On/Off

► OSD Setting – Parking Mode *It must enter OSD parking menu on **Parking Mode**

MENU	Parking		REAR
Config	OPS Display	On	
Option	Line Display	On	
Image	Horizontal	<input type="checkbox"/>	50
Screen	Vertical	<input type="checkbox"/>	50
Parking	Space	<input type="checkbox"/>	0

MENU	Parking		REAR
Config	OPS Display	On	
Option	Line Display	On	
Image	Horizontal	<input type="checkbox"/>	50
Screen	Vertical	<input type="checkbox"/>	50
Parking	Space	<input type="checkbox"/>	0

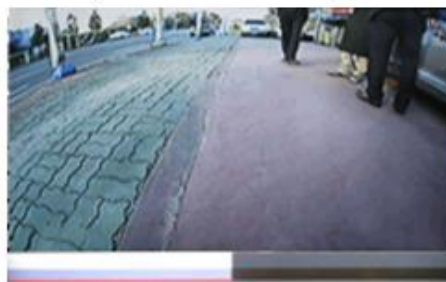
MENU	Parking		REAR
Config	OPS Display	On	Off
Option	Line Display	On	
Image	Horizontal	<input type="checkbox"/>	50
Screen	Vertical	<input type="checkbox"/>	50
Parking	Space	<input type="checkbox"/>	0

MENU	Parking		REAR
Config	OPS Display	On	Off
Option	Line Display	On	
Image	Horizontal	<input type="checkbox"/>	50
Screen	Vertical	<input type="checkbox"/>	50
Parking	Space	<input type="checkbox"/>	0

Parking line ON



Parking line OFF



OSD Menu - Parking Sensor On/Off

- OSD Setting – Parking Mode *It must enter OSD parking menu on **Parking Mode**

MENU	Parking	REAR
Config	OPS Display	On
Option	Line Display	On
Image	Horizontal	<input type="text" value="50"/>
Screen	Vertical	<input type="text" value="50"/>
Parking	Space	<input type="text" value="0"/>

MENU	Parking	REAR
Config	OPS Display	On
Option	Line Display	On
Image	Horizontal	<input type="text" value="50"/>
Screen	Vertical	<input type="text" value="50"/>
Parking	Space	<input type="text" value="0"/>

MENU	Parking	REAR
Config	OPS Display	On Off
Option	Line Display	On
Image	Horizontal	<input type="text" value="50"/>
Screen	Vertical	<input type="text" value="50"/>
Parking	Space	<input type="text" value="0"/>

MENU	Parking	REAR
Config	OPS Display	On Off
Option	Line Display	On
Image	Horizontal	<input type="text" value="50"/>
Screen	Vertical	<input type="text" value="50"/>
Parking	Space	<input type="text" value="0"/>

OPS ON

OPS OFF



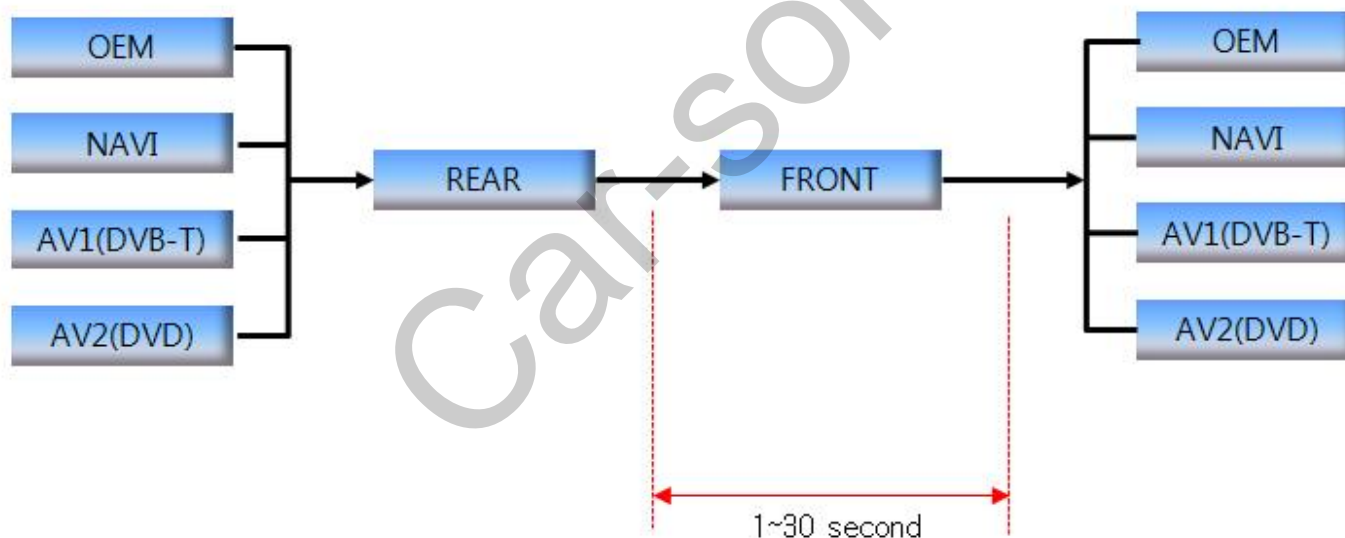
* There is no Parking sensor display (OPS Image) on without parking sensor car

OSD Menu - Front camera Auto mode

► OSD control- Front Camera Auto Mode

- Option -> RearCam-RcvOpt -> 0 second = RearCam-RcvOpt menu OFF
- 1~30 second = RearCam-RcvOpt menu ON & time control

MENU	Option / RearCam-RcvOpt	REAR	MENU	Option / RearCam-RcvOpt	REAR
Config	FrontCam-Det	ExtWire	Config	FrontCam-Det	ExtWire
Option	RearCam-RcvOpt	0s	Option	RearCam-RcvOpt	30s
Image	AV Out	USER	Image	AV Out	USER
Screen	Reset	Execute Cancel	Screen	Reset	Execute Cancel
Parking			Parking		



OSD Menu

► OSD Setting – Utility Mode

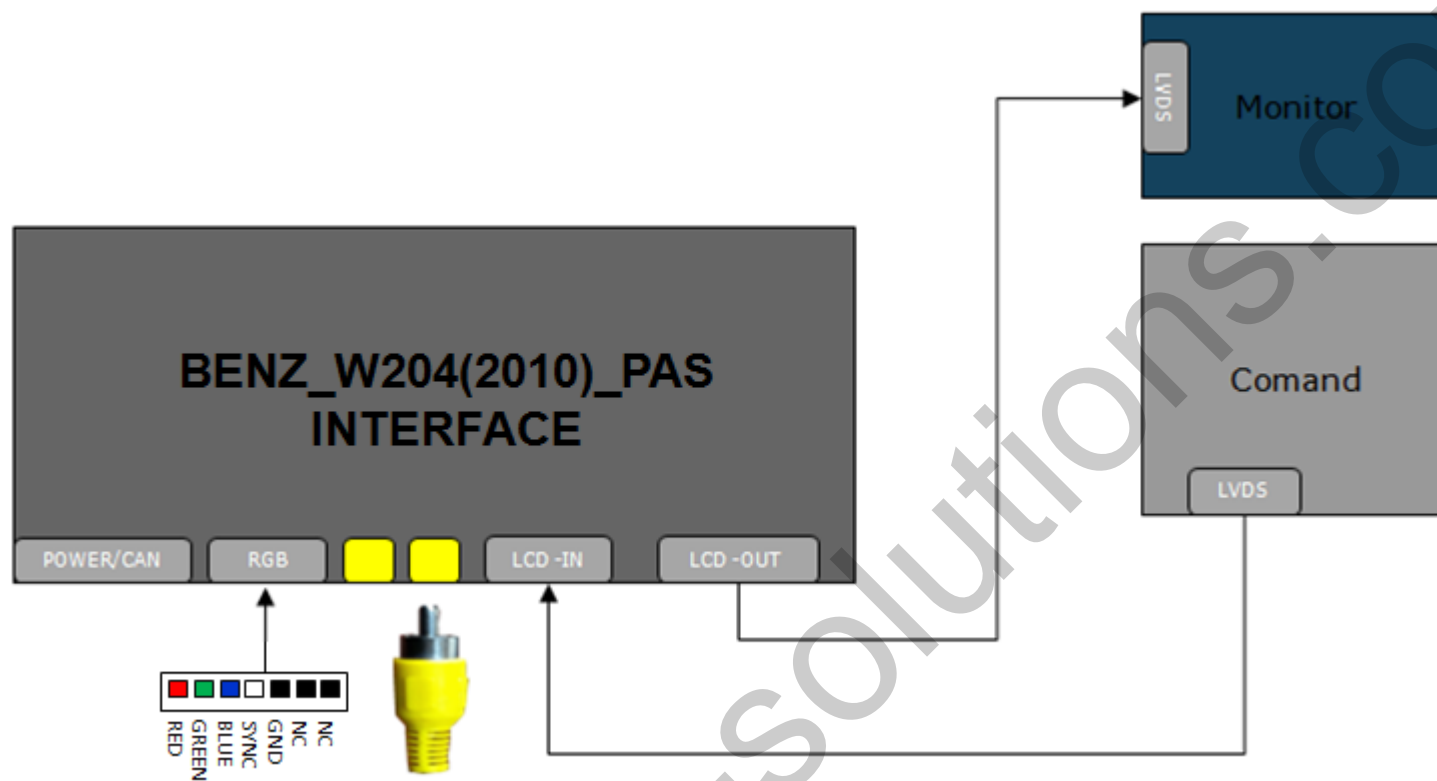
MENU	Utility / Factory Reset	REAR
OSD	Factory Reset	Execute Cancel
Utility	Version	BEPP06SGX-130950

- Reset All : Reset
- Info : FW version

Last Source : BEPP06SGX-130950

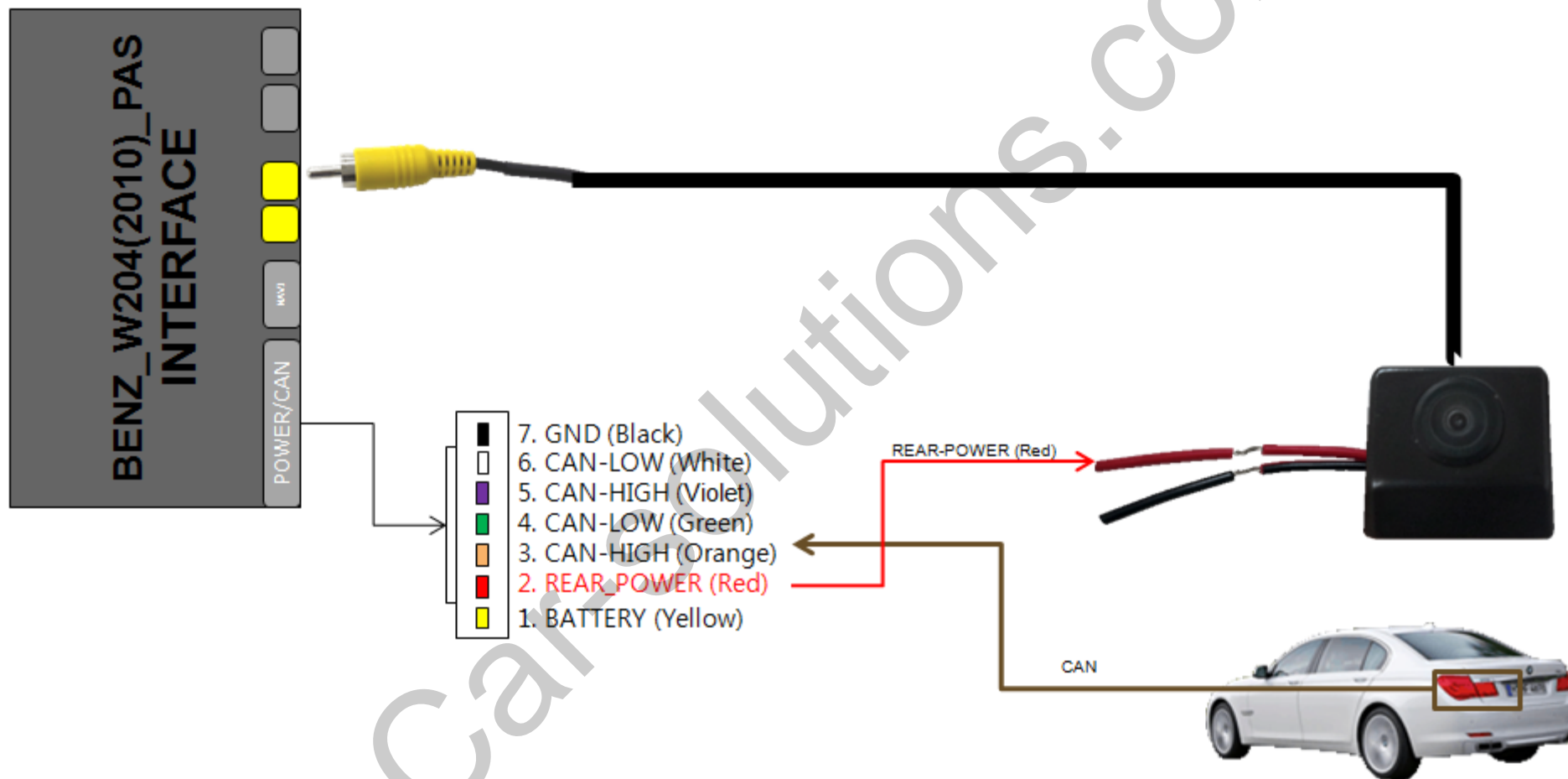


Installation Diagram

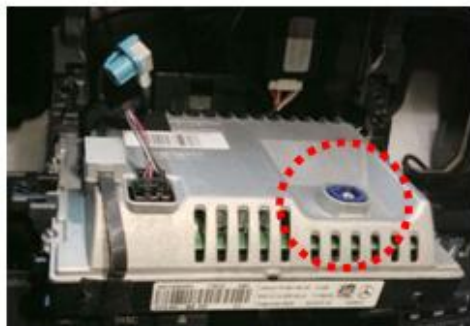


Installation External Rear camera connection

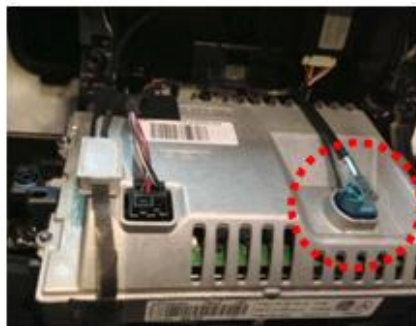
► OSD Screen selection Wire / CAN



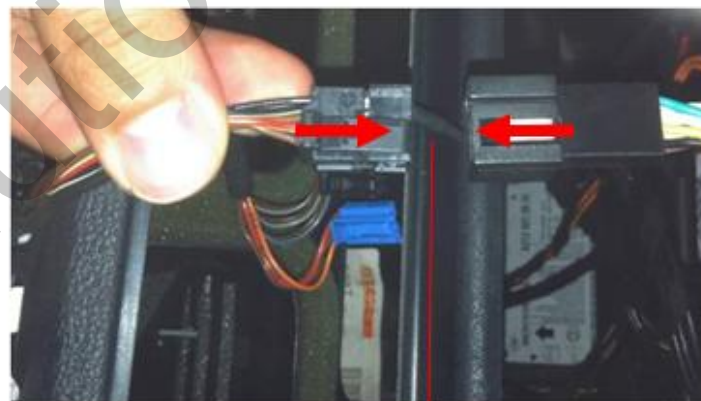
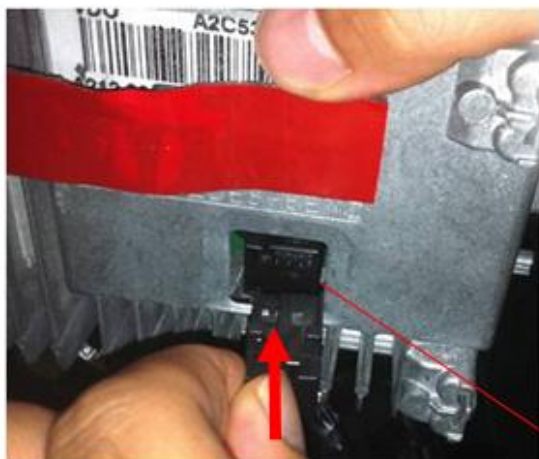
Installation 'Monitor Part'



Pull out Original LVDS Cable



Connect our LVDS OUT Cable



Installation 'PAS-CAN Connection'

