

Chrysler/Dodge interface for MyGig Installation manual



This interface can insert DVD video, navigation RGB, and reverse camera video onto MyGig original screen, it also has these advantages:

- The original touch screen can be used for the inserted navigation.
- Automatical reverse camera trigger.
- High resolution RGB input for navigation input.

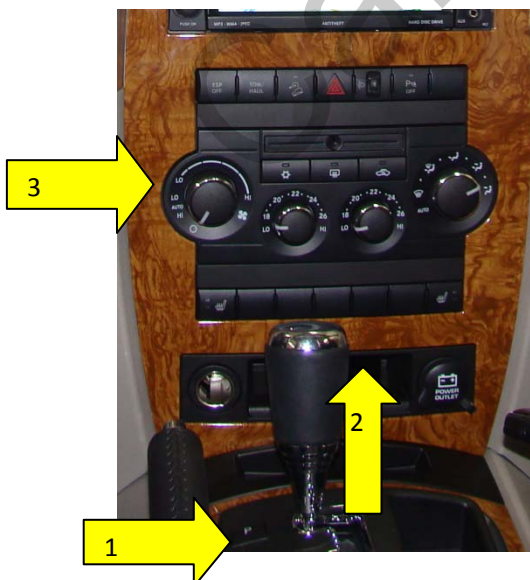
(1) Installation



First, remove the big plastic part away, there is no screw there, just hooks.

Then 4 screws can be seen, they are fixing the monitor there.

These 4 screws should be removed to take down the monitor. Be careful not to press the wires when inserting back.



Grand Cherokee and Commander:

Remove the parts as the arrows are listing:

First: remove the silk part close to the gearshift [no screws, just hook].

Second: Remove the screw which is pointing by arrow 2 [at the bottom],

Third: remove the total wooden cover.

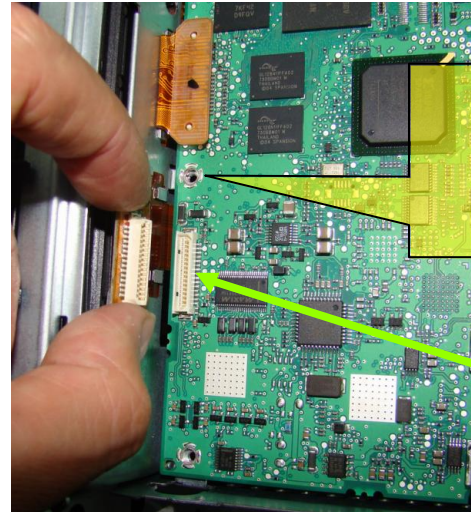
Then the total monitor can be taken down.

SUB-board installation

← Open the monitor by removing the top 2 screws, then the PCB is like this.

Remove this screw, then the whole monitor can be taken down.
Be careful: the orange ribbon cable is very fragile, be sure not to split it.

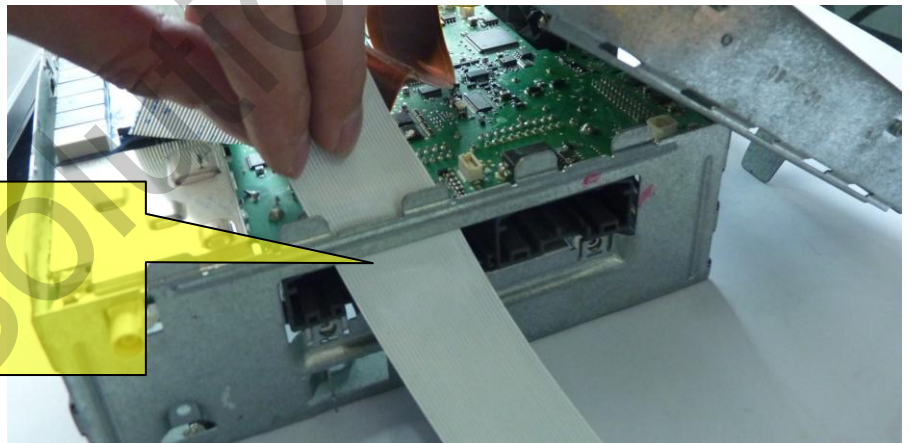
Plug in provided SUB-board to the OEM white OEM socket. SUB-board may differ from those presented in manual.



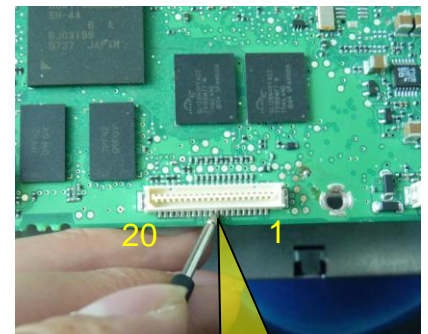
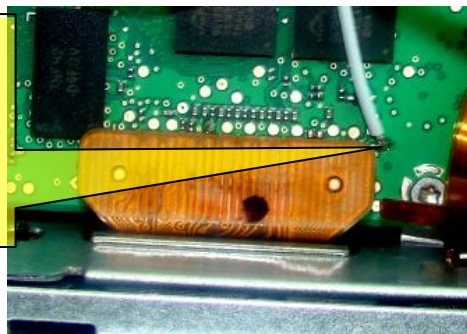
Replace OEM orange FFC cable with provided white FFC cable.



Connect provided wide FFC cable between SUB-board and video interface.



If you want to use OEM button to switch modes solder wire button like it is shown in this pictures. Solder point may differ for different revisions of the head unit.



Pin #10

(4) Reverse camera trigger signal

there is a line box near the driver's left foot location, this connector can be seen when the box is opened.

The 2nd pin [from left to right] on the first row is reverse camera signal.

The line connecting is white with green strips[diameter=3mm]。



(5) input channel switch:

With the **Voice** key (long press > 1 second) the interface switches the input.

