

This interface can insert DVD video, navigation RGB, and reverse camera video onto MyGig original screen, it also has these advantages:

- The original touch screen can be used for the inserted navigation.
- Automatical reverse camera trigger.
- High resolution RGB input for navigation input.

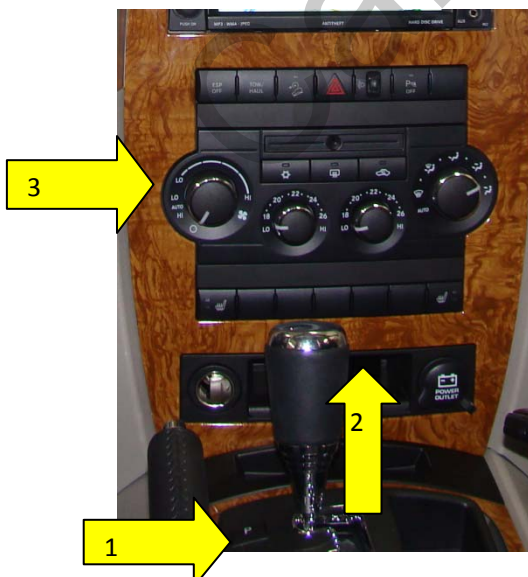
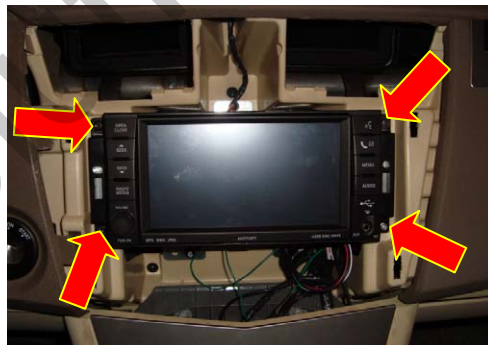
(1) Installation



First, remove the big plastic part away, there is no screw there, just hooks.

Then 4 screws can be seen, they are fixing the monitor there.

These 4 screws should be removed to take down the monitor. Be careful not to press the wires when inserting back.



Grand Cherokee and Commander:

Remove the parts as the arrows are listing:

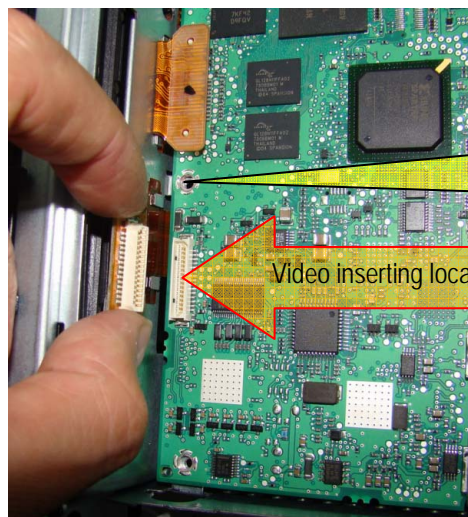
First: remove the silk part close to the gearshift [no screws, just hook].

Second: Remove the screw which is pointing by arrow 2 [at the bottom],

Third: remove the total wooden cover.

Then the total monitor can be taken down.

(2) Internal daughter board installation:



← Open the monitor by removing the top 2 screws, then the PCB is like this.

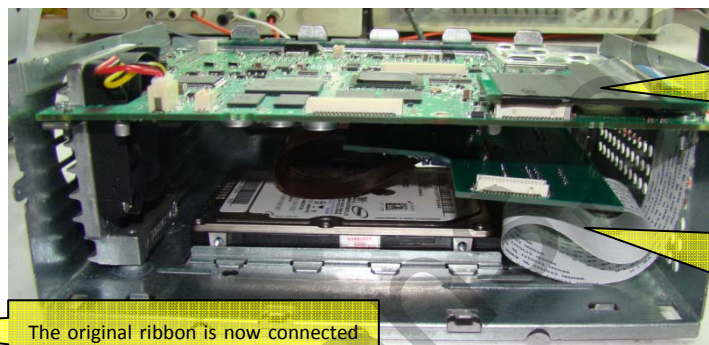
Remove this screw, then the total monitor can be taken down.

Be careful: the red ribbon cable is very fragile, be sure not to split it.

Video inserting location

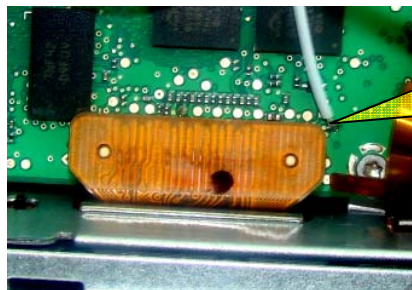


The original ribbon is now connected to the daughter board below.



One daughter board is on top of the main board.

The two PCBs are connected by the ribbon. the big PCB can be installed exactly here.



Switch wire location:

The right-most point is for channel switching.



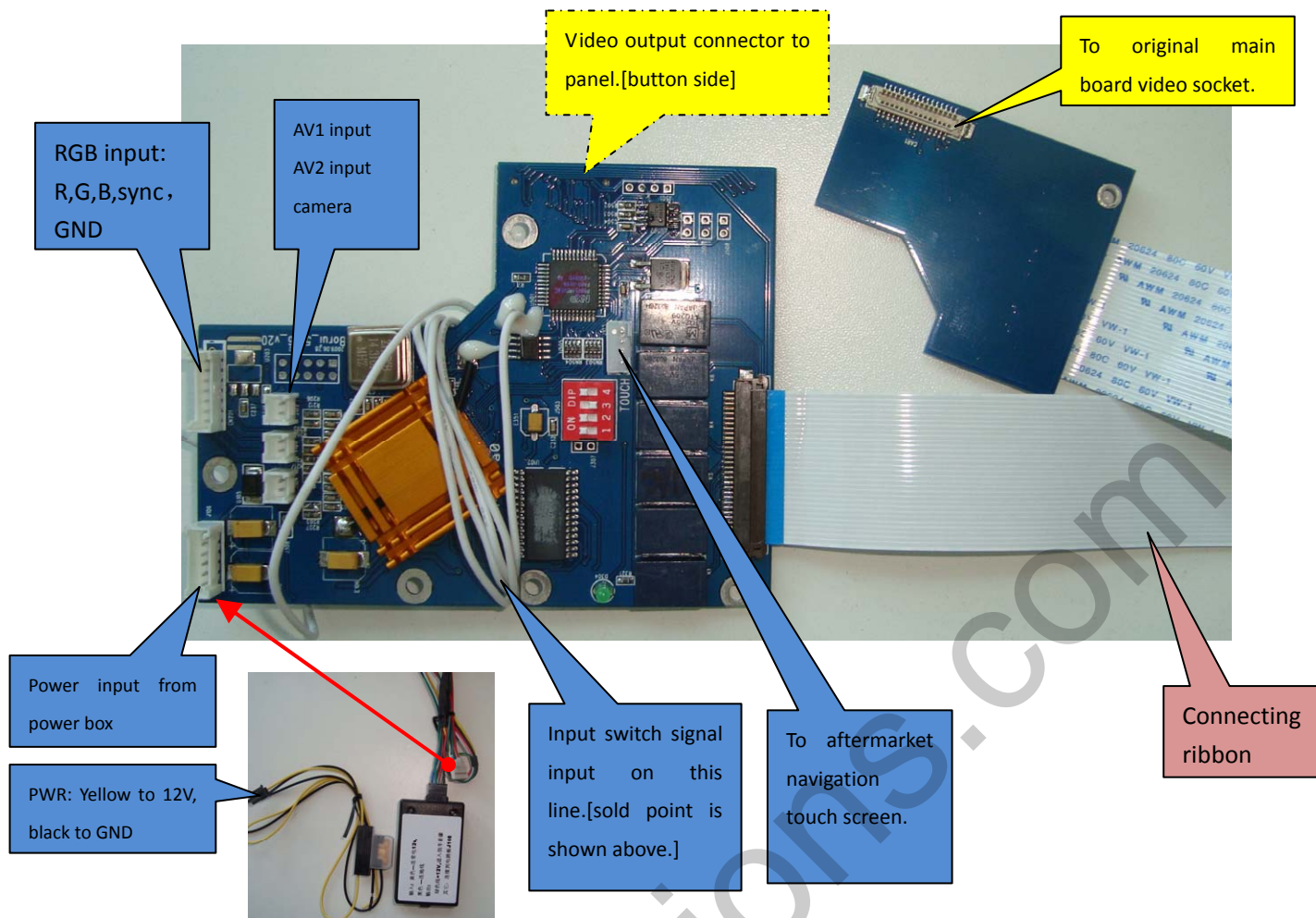
The main board installation location:

Remove the hard disk screws, then big space can be seen inside as well as 2 extra screw holes to install the board.

Use one screw to fix the main board here [this screw can come from the top cover.]

The output wires should be fixed to the shell, the separate wire should be bonded together, and wrapped with tape for better reliability.

(3) Main board signals:



4Pin DIP switch settings:

DIP 1: RGB navigation enable

DIP 2: AV1 enable

DIP 3: AV2 enable

DIP4:

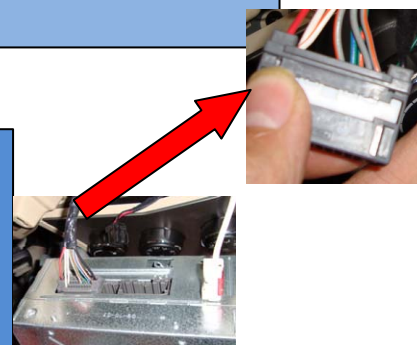
DIP4=ON	When Green wire=12V, input=reverse camera
DIP4=OFF	When Green wire=12V, input=car video

Power box connection:



This connector goes to J106 of main board[5V, 3.3V, 1.8V].
Pink wire =ACC [when monitor works, it is 8.1V; then all power are generated.
Green wire=reverse camera trigger wire.

The power input:
PWR: Yellow to 12V, it should be connected to the big RED wire of this connector.
black to GND, to the big black wire of this connector →

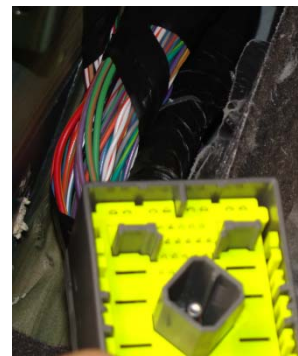


(4) Reverse camera trigger signal

there is a line box near the driver's left foot location, this connector can be seen when the box is opened.

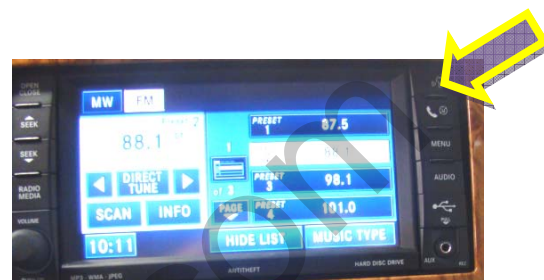
The 2nd pin [from left to right] on the first row is reverse camera signal.

The line connecting is white with green strips[diameter=3mm]。



(5) input channel switch:

With the Voice key (long press > 1 second) the interface switches the input.



(6) Accessories

- [] One main board with one daughter board.
- [] 30P connecting ribbon
- [] AV wires
- [] RGB input wire
- [] power box [with connecting wires]
- [] user's manual.