

# Video interface for Chrysler, Dodge, Jeep with TV-FREE function and VES activation



# Contents

- 2 Spec
- 3 Classification
- 4 External Appearance
- 5 Connector Pin Assignment
- 6 Product Composition
- 7 DIP S/W Setting
- 8 Steering Wheel Button
- 9 Installation

# Specification

## 1. Input Spec. (MULTI VIDEO INTERFACE)

- 1 x Analog RGB Input (Navigation System output)
- 1 x UART Port (Touch control)

## 2. Output Spec.

- 1 x Rear Camera Power
- 1 x Navigation ACC On Signal

## 3. Power Spec.

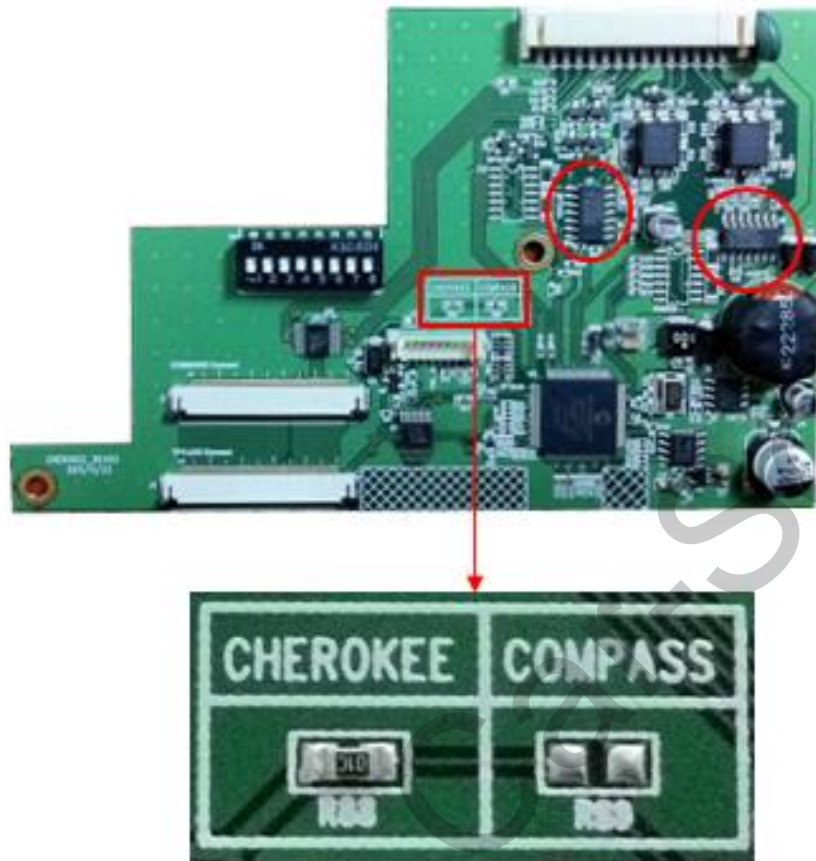
- Input Power : 8VDC ~ 24VDC
- Consumption Power : 5Watt, Max

## 4. Switch Input mode

- Possible to switch input mode with toggle switch.
- By button on the Steering wheel in the car via CAN
- By button on the Commander in the car via CAN

# Classification

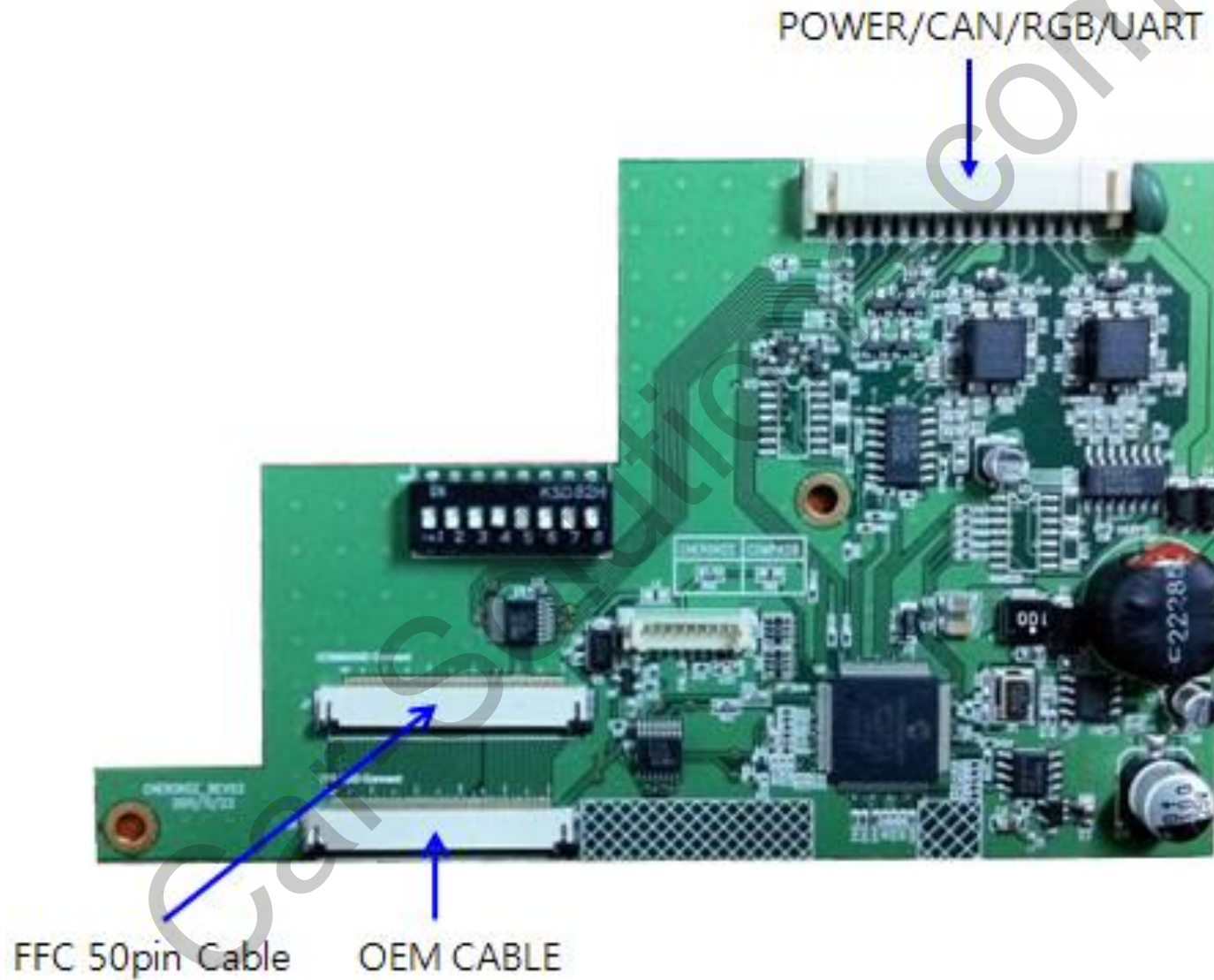
- Grand Cherokee
- Wrangler Rubicon



- COMPASS

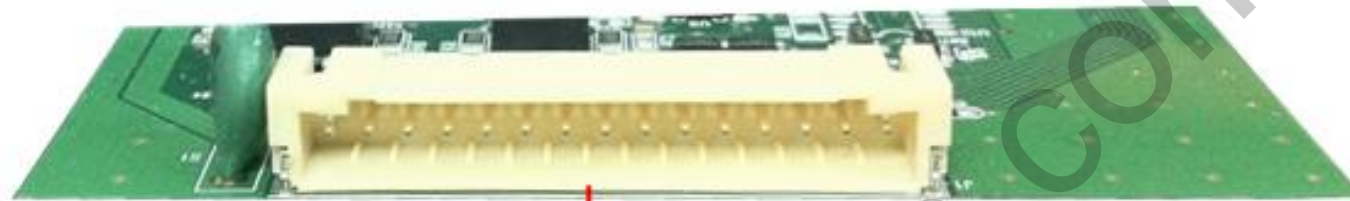


# External Appearance

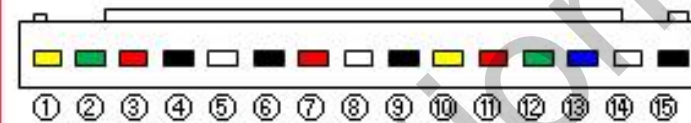




# Connector Pin Assignment

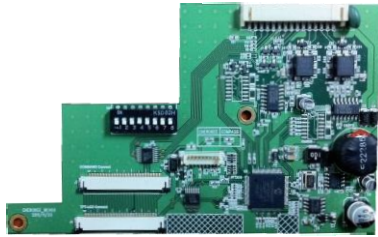


\*POWER Connector



- ① BATTERY (Yellow)
- ② CAN-L in (Green)
- ③ CAN-H in (Red)
- ④ CAN-L out (Black)
- ⑤ CAN-H out (White)
- ⑥ GND (Black)
- ⑦ NAVI-ACC (Red)
- ⑧ Rear Camera Power (White)
- ⑨ UART TX (Black)
- ⑩ UART RX (Yellow)
- ⑪ NAVI-RED (Red)
- ⑫ NAVI-GREEN (Green)
- ⑬ NAVI-BLUE (Blue)
- ⑭ NAVI-SYNC (White)
- ⑮ NAVI-GND (Black)

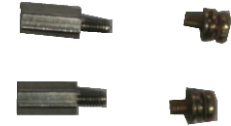
# Product Composition



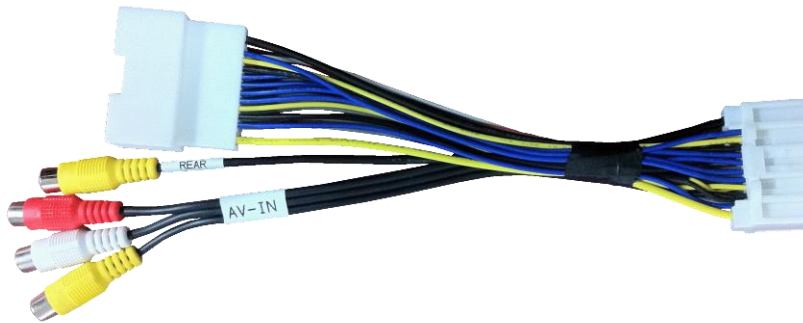
Interface Board 1 EA



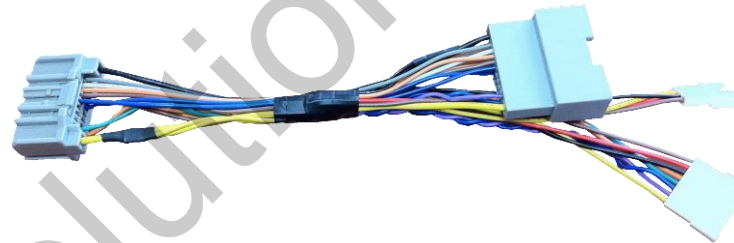
FFC Cable 1 EA



BEAM, BOLT 2 EA



A/V Cable 1 EA



POWER/CAN Cable 1 EA



INTERFACE Cable 1 EA

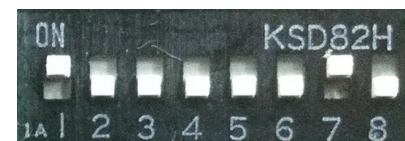


GPS Cable - OPTIONAL

# DIP S/W Setting

※ ON : DOWN , OFF : UP

PIN	FUNCTION	DIP S/W Selection	
1	GPS INPUT MUTE	ON OFF	: GPS Display : Skipping GPS Mode
2	N.C		
3	GPS Selection	ON OFF	: KD-900X GPS use : GI-4000 GPS use
4	VES Mode	ON OFF	: Ext. Video use : Not Use
5	N.C		
6	DTV-FREE	ON OFF	: Use : Not Use
7	REAR Mode	ON(7), ON(8)	: OEM Rear Camera
8		ON(7),OFF(8) OFF(7),ON(8) OFF(7),OFF(8)	: Not use Rear Camera : Interface Rear Camera : NAVI Rear Camera



Use GPS  
Not use rear camera



Use GPS  
Use oem Rear camera



Use GPS  
Use external rear camera with AV1.



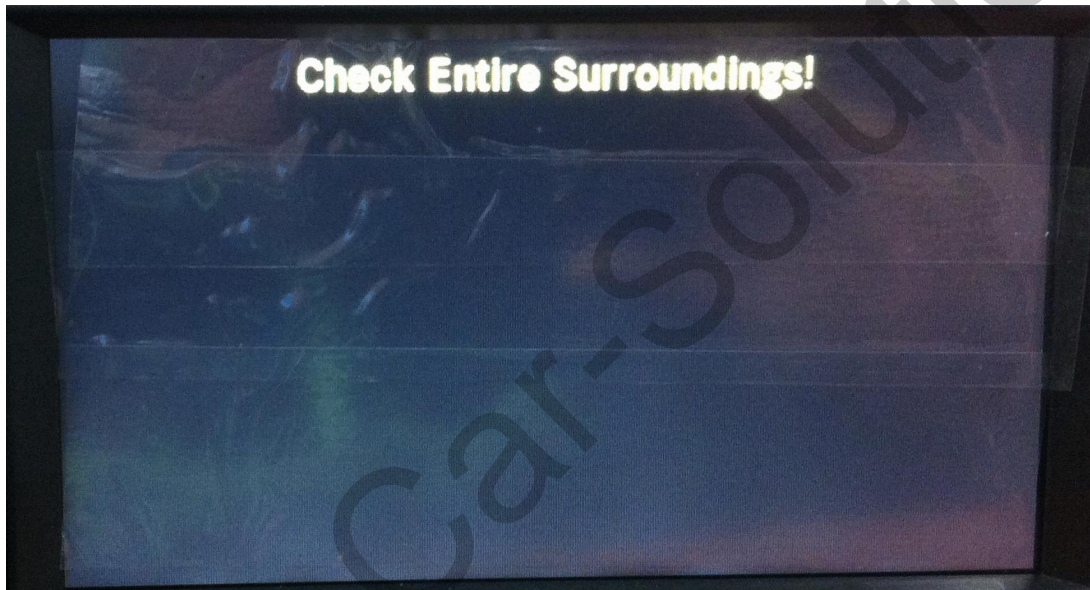
# DIP S/W Setting

※ Select **"Interface Rear camera"** on REAR MODE.

Dip S/W **OFF(7),ON(8)** : Interface Rear Camera

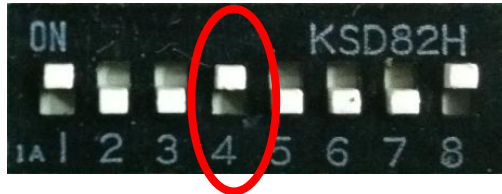


After **"Check Entire Surroundings!"** Message. Than appear rear camera image.

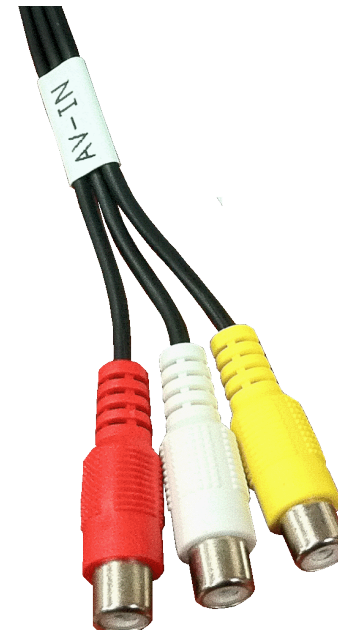
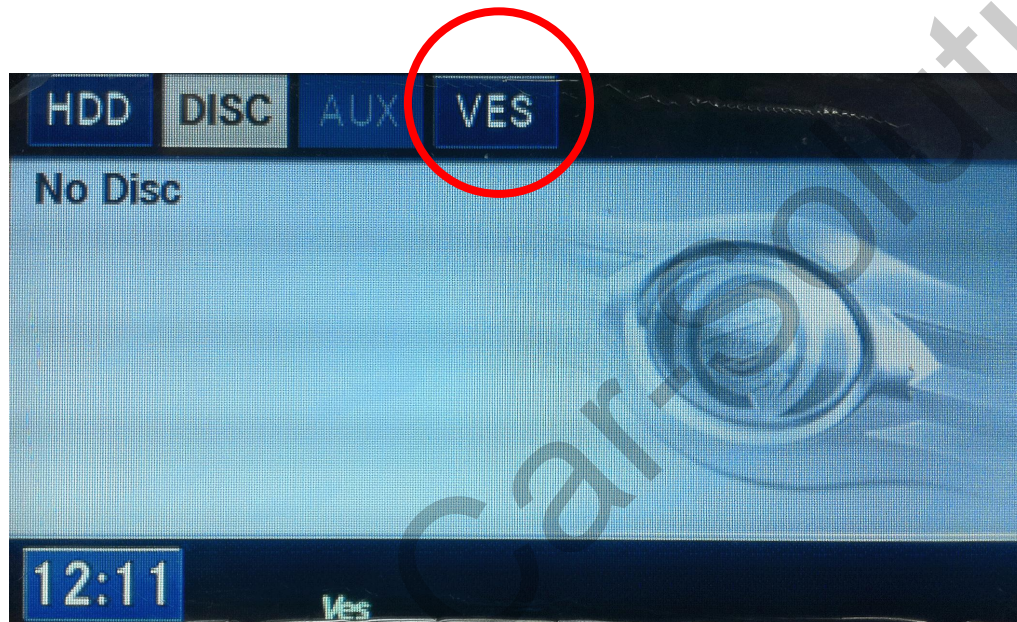


# DIP S/W Setting

※ Select "VES MODE"



"VES" Icon appears on the screen. Than touch "VES" icon, than change to AV mode.  
But, "Grand Voyager and original VES option car, **cannot use!**



# Steering Wheel Button



Push 1 sec, change to Navigation Mode.



# Installation (Monitor Part)

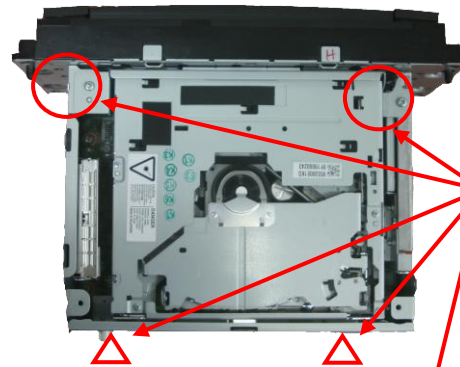


Remove the screw

# Installation (Audio Deck Part)



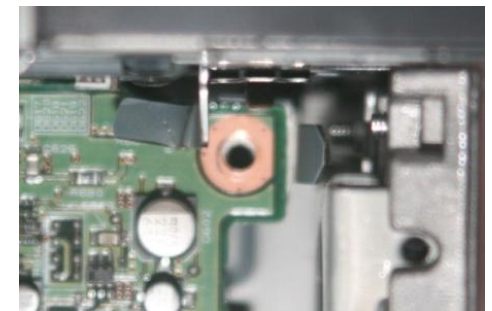
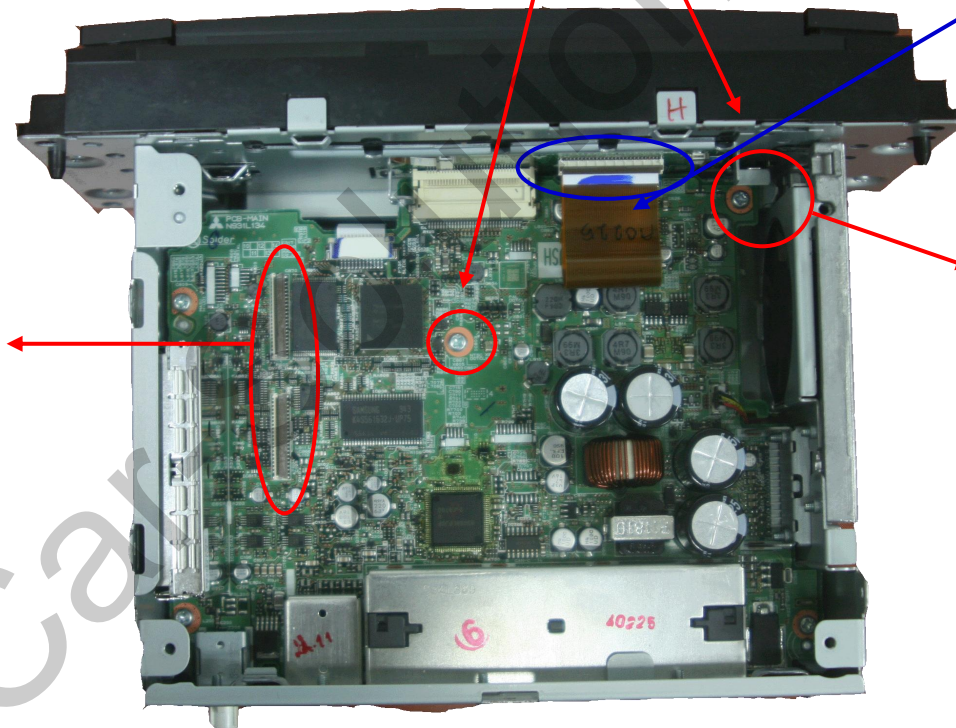
Remove the screw



Remove the Screw / Separate the FFC cable



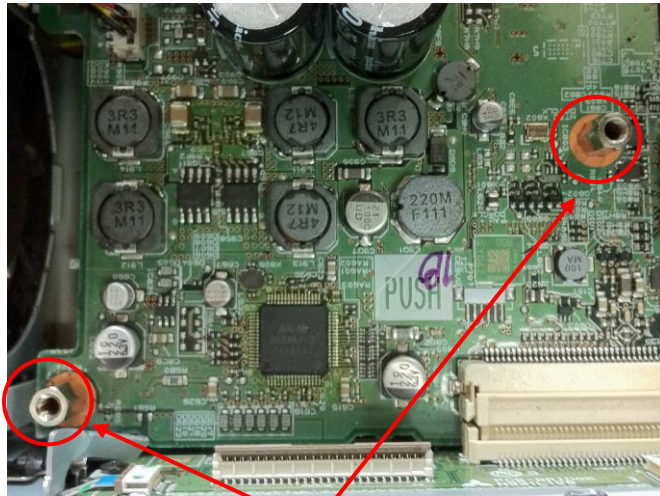
Separate the DVD



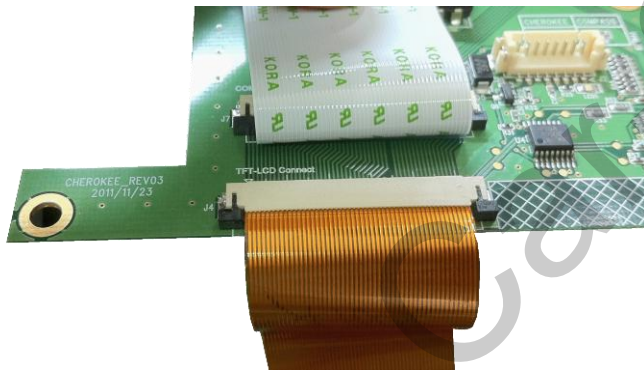
Bend like a photo for support beam



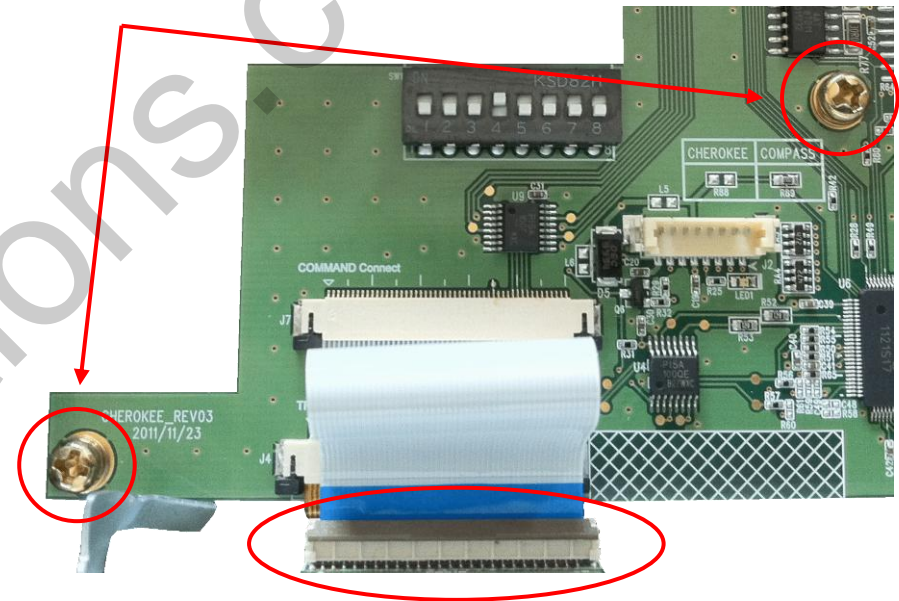
# Installation (Interface Part)



Install the support beam

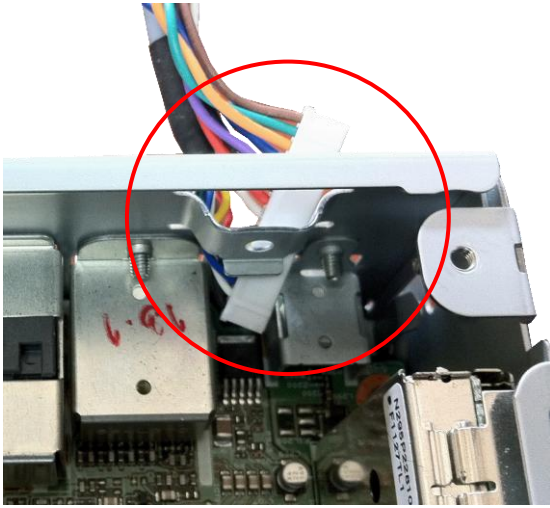


Screw the bolts

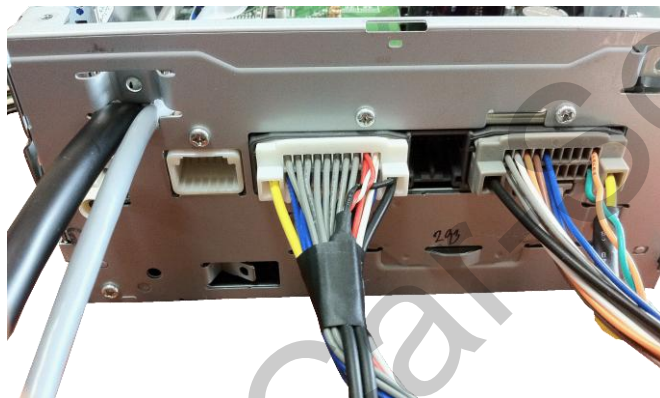


Connect to our FPC cable

# Installation (Cable Part)



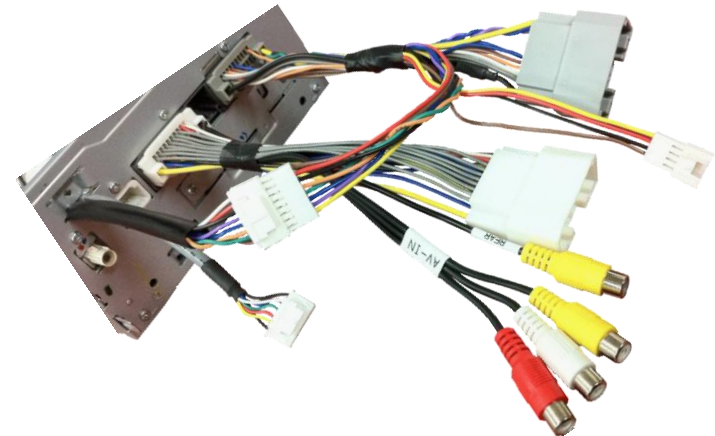
Our cable put into the H/U



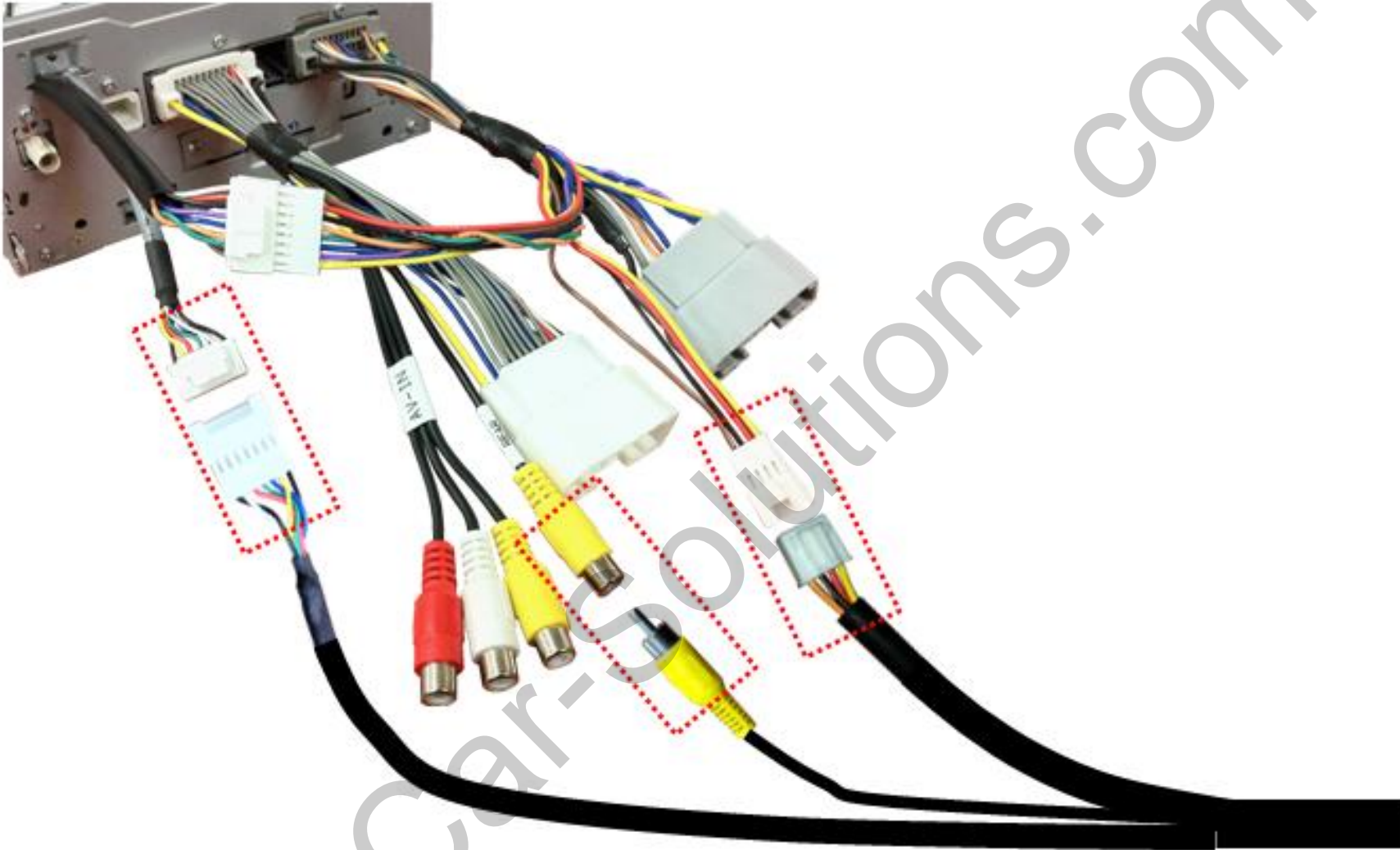
Interface  
cable

A/V cable

POWER/CAN  
cable

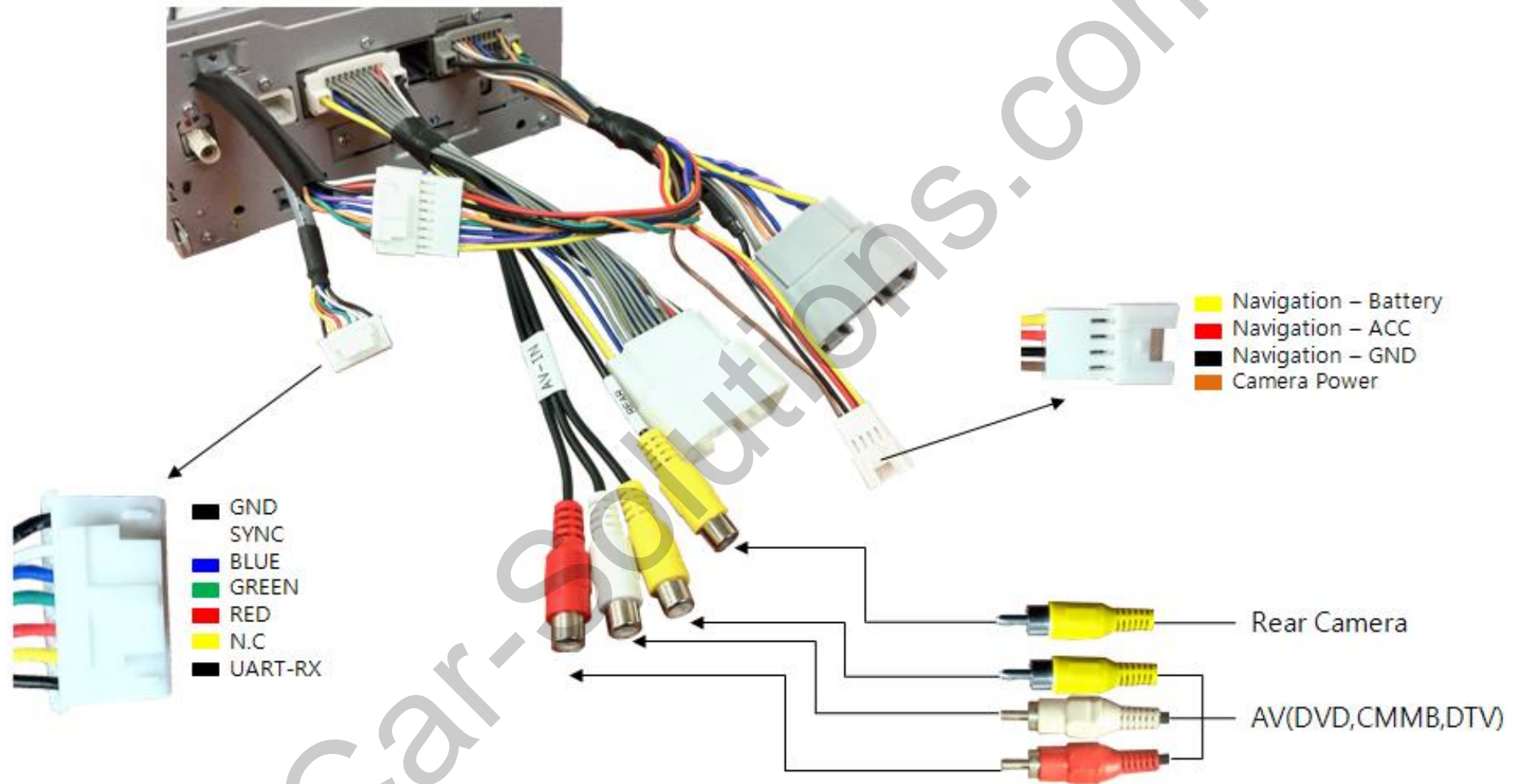


# Installation (Cable Connection)





# Installation (Interface connection)



※ UART-RX and RXD(KD900X) connection