

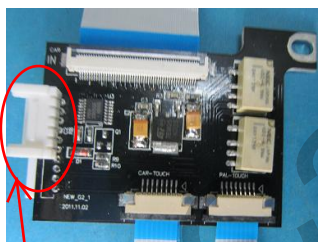
## Chrysler dodge Jeep 2012



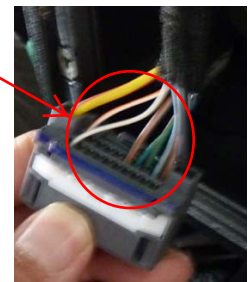
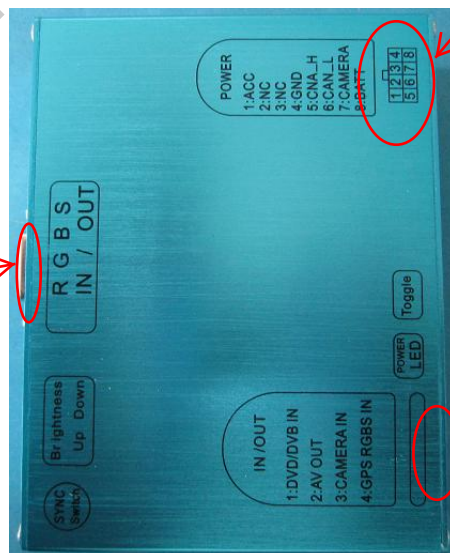
1. It is suitable for Chrysler all MYGIG Radio: DODGE, JEEP, JOURNEY, CHEROKEE
2. Input: 1AV 1 RGBS for NAVI, 1 rear camera,
3. Output: 1AV, 1 RGBS to original monitor.
4. Auto rear camera input
5. Built-in CANBUS, can use the original button to switch
6. cable connection, no need to cut and weld.

Car original	Interface
Black : GND	4PIN Black : Ground
Red/Yellow : +12V	8PIN RED : +12V
White/Red : CAN_	5PIN Blue : CAN_
White : CAN+	6PIN Blue/blue : CAN+

connection:



as the picture to connect daughter board



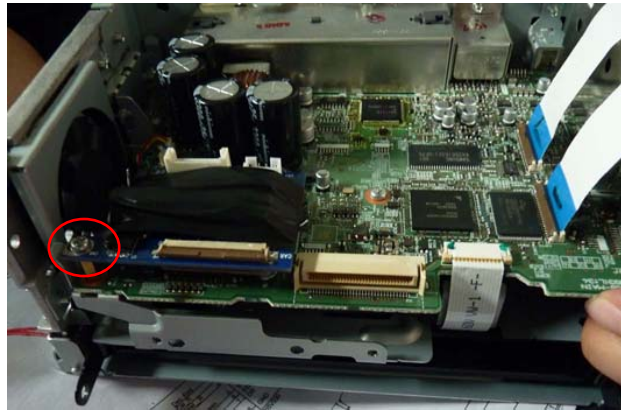
AV, rear CAM input. and AV output



NAVI GPS BOX RGBS INPUT

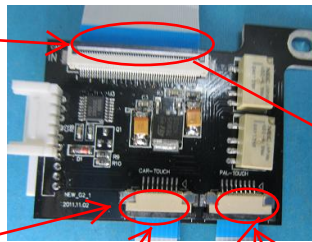


detach the Radio

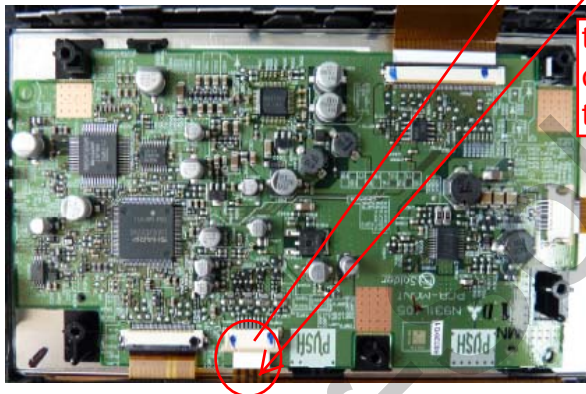


the place for fix the daughter board

As picture : 50PINS connect ing cable to original Radio 50PINS connector

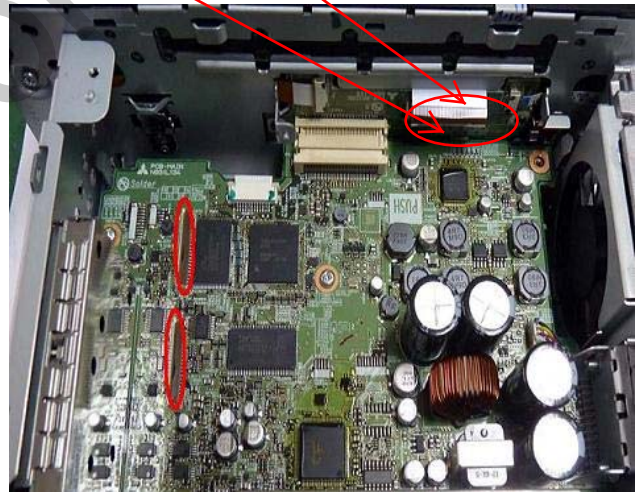
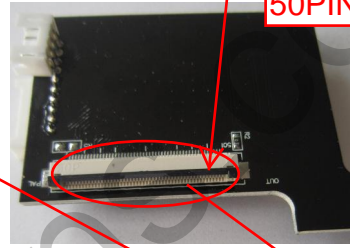


this touch cable to original Radio touch 8PINS connector



to connect original 8PINS touch cable

As picture : this 50PINS connecto to connect original 50PINS golden cable



Press this button will switch: RGBS---AV1---Original Radio---RGBS-----  
该按钮切换：导航--AV1---原车---导航