

# Ford\_Din10 Interface

## installation manual\_v110523

Product type: FV-ford-Din11

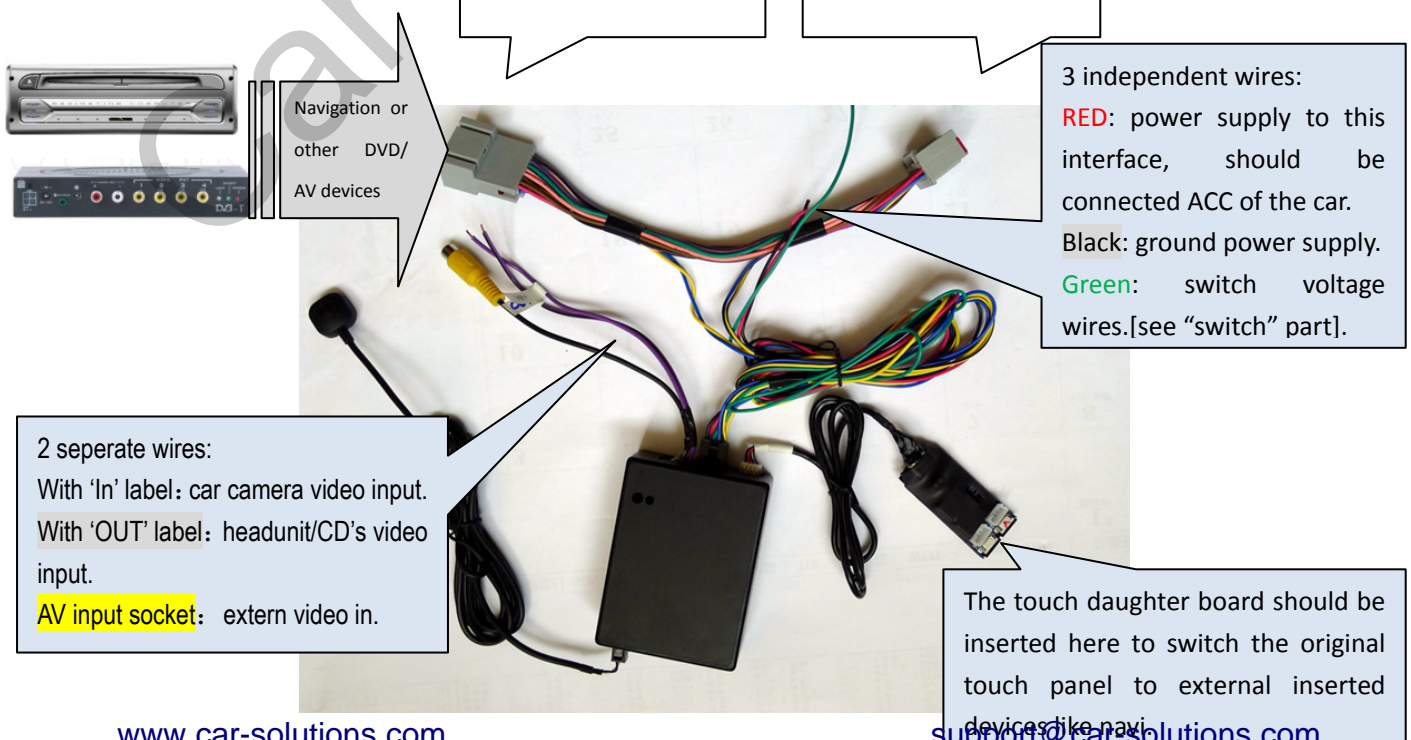
this interface can insert video onto the head unit of ford/lincoln car, which has a 2Din screen with CD and LCD combined. Ford fusion/edge also has a version with sperated LCD screen and CD, in that case, please check fosp's Ford-fusion LVDS interface.

This interface works on ford/lincoln 2010/2011 and later which has LCD/CD combined, it has internal CAN gateway, which simulate the camera state by sending CAN code to the CD, so external video is inserted. This can bridge does not influence all other functions of the CAN system because of the CAN-beidge inside.

The features are:

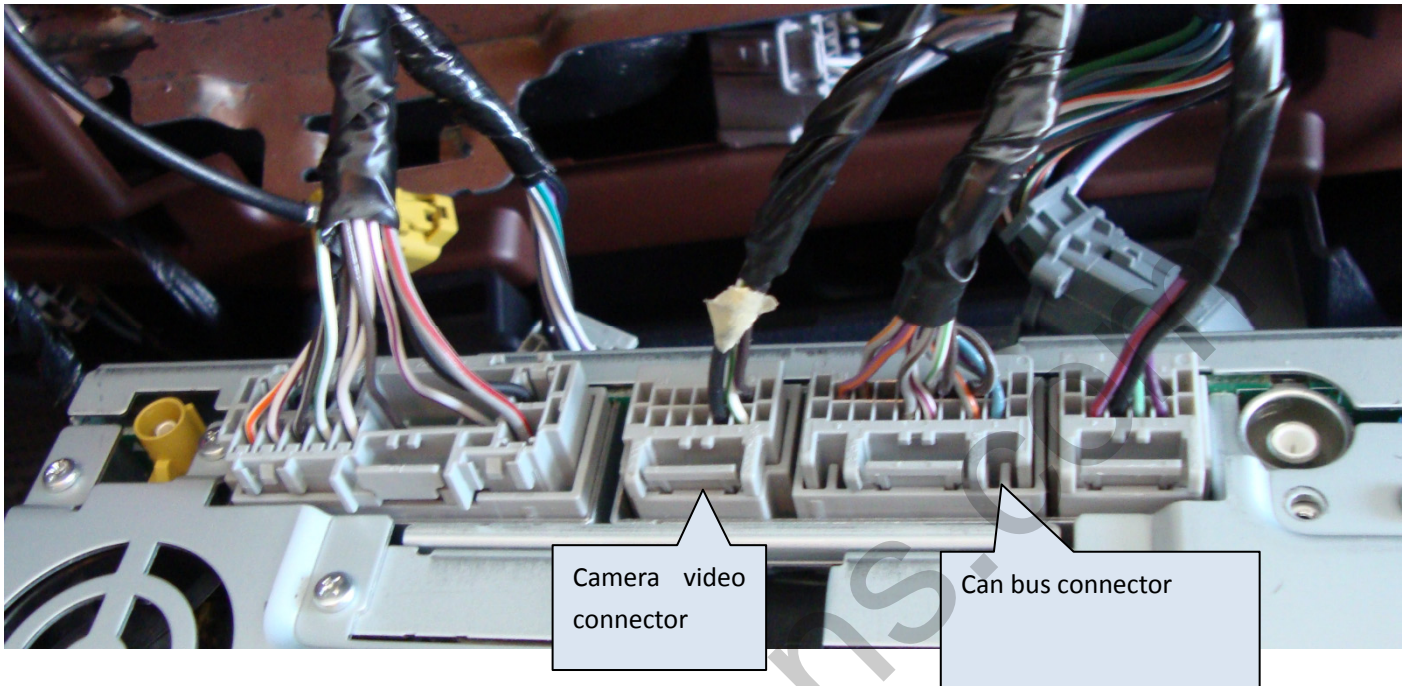
1. This interface is compatible with ford 2011/2010 and later, [the 2Din head unit with CD and LCD together], the installer does not need to open the CD, when video is inserted. So the installation risk is low.
2. The internal CAN-bridge gateway makes all original function the same, and when people presses the "media" key on the steering wheel, the inserface sends the inserted video also gives simulated can code to the Headunit so inserted video is seen, the original reverse camera function is not changed because of the mechanical relay inside.
3. Internal touch panel switch circuit allows the original touch panel operated by the user for installed navigation.
4. Original reverse camera video is not hurt, when in reverse mode, original camera video will be shown..

### ● System connection



## 1. CAN bus connection

This interface has a can-bridge inside, the plug-socket harness makes this interface inserted onto the CAN wires. So the simulated can code will be sent to head unit in external AV-insertion mode, and the bidirectional Can code will be by passed when in not-inserting-video mode.

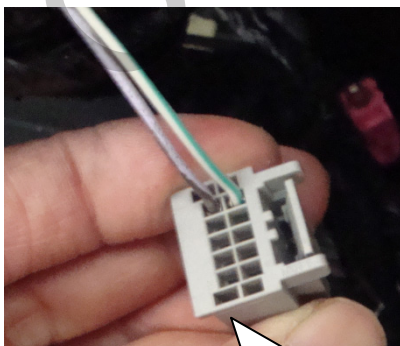


this method here can verify the CAN installation:

- when the interface's 1,2 pin[Red,Black] are connected to ACC, the interface works. When there is CAN code running,(key inserted onto the car) and the car's CAN connector is inserted onto the interface's socket, the right-side LED will be blinking.  
[CAN wire wrong connection will not damage any device.]
- Then the interface's plug will should be inserted onto the head unit's socket, the left side LED will be blinking.
- When the key is pulled out, the CAN bus will stop running after around 30 seconds, then this interface will stop working, both LED will be black, and interface goes to sleep mode.



## 2. video insertion



Camera connector:  
Purple/Gray: video GND  
White/Green: video signal





This white/Green wire should be cut off to become 2 wires, so that the video interface can be inserted. As the table below shows.

E	White/Green wire/Car end.	Connect to the violet wire of the interface marked with "Car in"
F	White/Green wire /Head unit end.	Connect to the violet/black wire of the interface marked with "Head unit out"

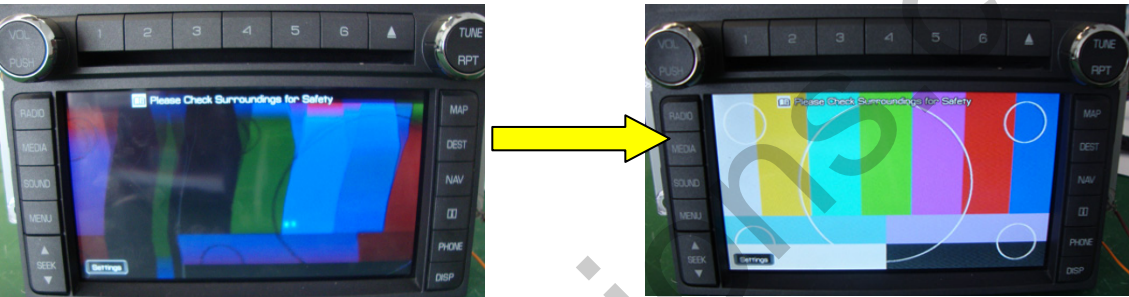
The interface will short-circuit these 2 wires when in normal work mode. When it is in insert-video mode, the CVBS connector's video will be inserted to the head unit end.

Note:

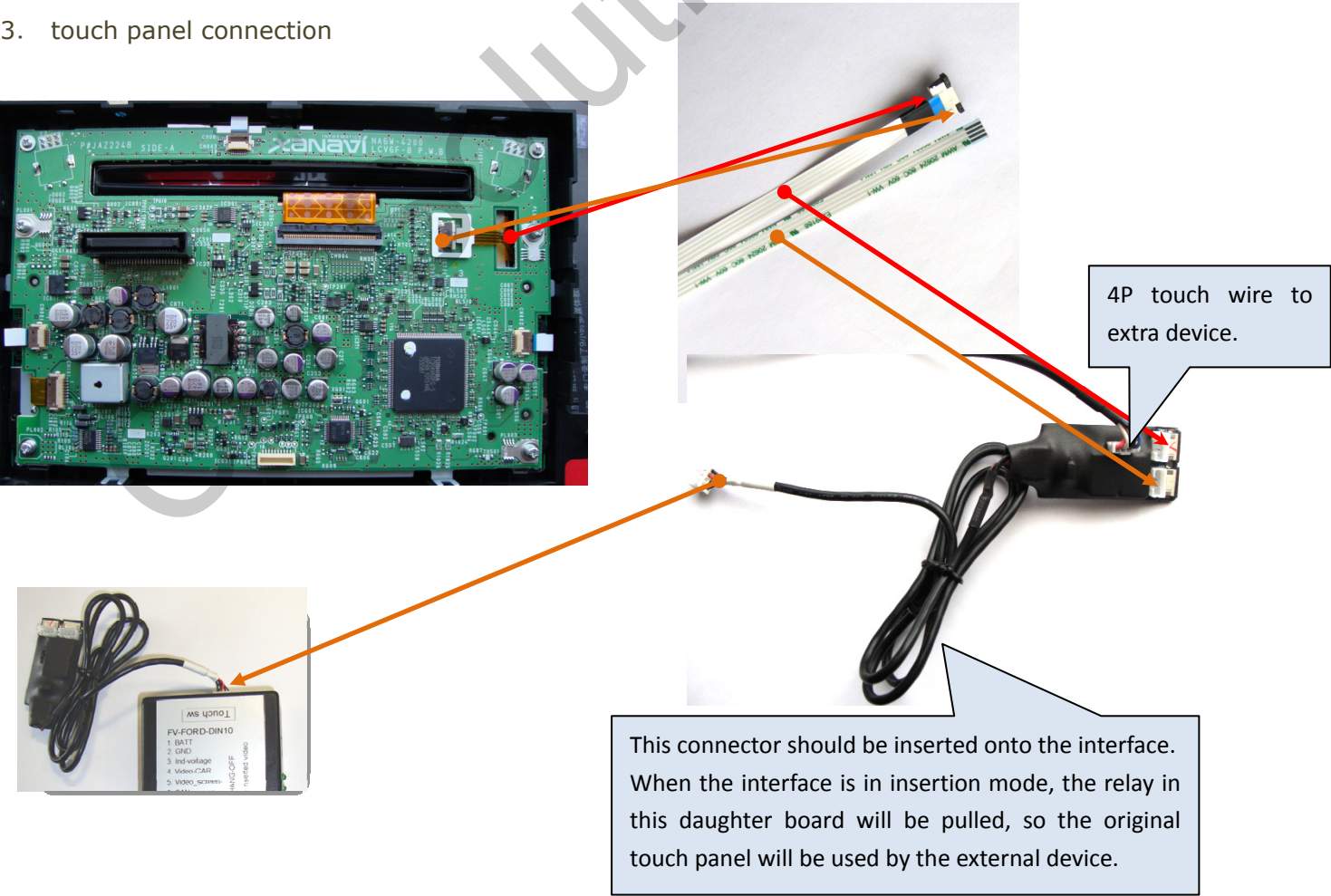
If the installer found interference on the video, please

- 1) Connect one extra ground wire from the video source to the head unit ground.
- 2) Or, connect to purple/Gray wire which is GND to the video source's GND.

This kind of extra video ground will remove the noise.



3. touch panel connection



there are some extra touch panel cables in the accessories, for touch conversion, the relationship is like this:

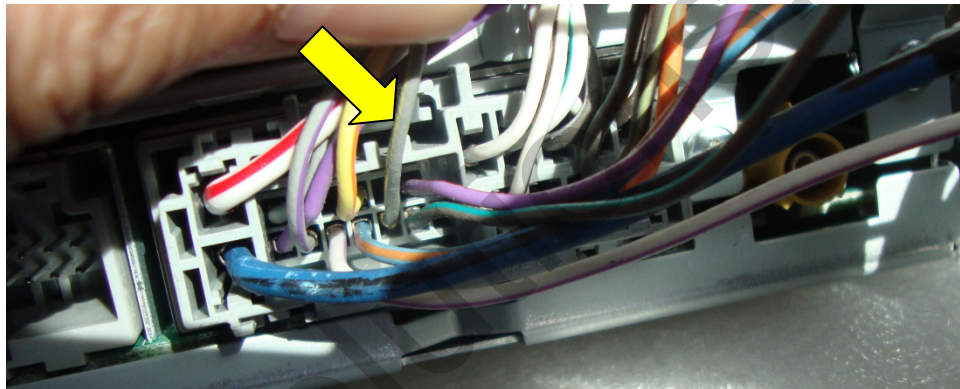
- Car touch panel → 4P accessory cable with 4P socket → the daughter board's 4P socket with red tick.
- Car touch 4P socket → 4P accessory cable → another 4P socket of the daughter board.

**Note:**

When the installer only wants to insert one extra video, and does not need touch panel, he then does not need to open the head unit, and insert this daughter board in between.

#### 4. Channel switch

- 1) When DIP1 of the interface is set to ON, the user can long press the "Media " key on the steering wheel, to switch the inputs. In this case, the installer needs to connect the separate green wire of the interface to the gray-yellow strip wire behind the CD.
- 2) When the DIP1 of the interface is set to OFF, the user can use the extra key pad to switch the video input.



#### 5. accessories

- (1) One interface
- (2) One harness with CAN input, output plugs.
- (3) One touch daughter board with 2 4P ribbons, one of them has a 4P socket.
- (4) One keypad.

