

Nissan Juke Video Interface Installation Guide

RELEASE DATE: 2011.04.20

Model:

Product code:

NISSAN JUKE

Compatible with JUKE,
mini SUV line of NISSAN



0. Contents

1. Installation

1 Installation diagram	3
2 Cautions on installation	4
3 Installation	5

2 Cautions on installation

- Ignition key should be taken off before starting installation, interface power connection must be the last step in installation.
- Power cable should be separated when connecting interface.
- Should be no any electronic devices or magnetic pole around installation place.
- All steps of installation should be done by well-trained specialist.
- Dismantling without manufacturer's permission can not be guaranteed, (No permission to break attached label on the board.)
- Kindly check all parts are in the box, when receiving the product, if anything missing, inform to the supplier or manufacturer.
- According to our sales policy, any problems caused by user's mistake, careless can not be guaranteed.

3 Installation

3.1 Separating monitor



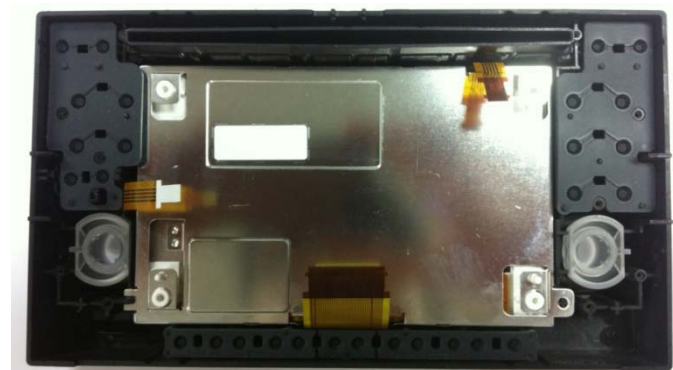
1. This is a picture of the monitor of JUKE.



2. If you turn the monitor over, you can see that as shown above.



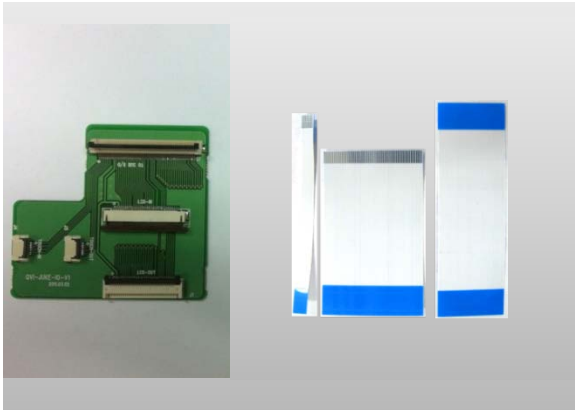
3. And pull the steel frame of the monitor apart. Then you can see the back of the monitor as shown above.



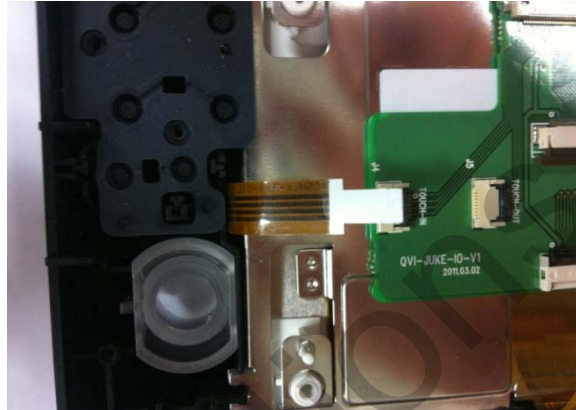
4. Next to process#3, pull the board attached on the back of the panel. Then you can see what is shown above.

3 Installation

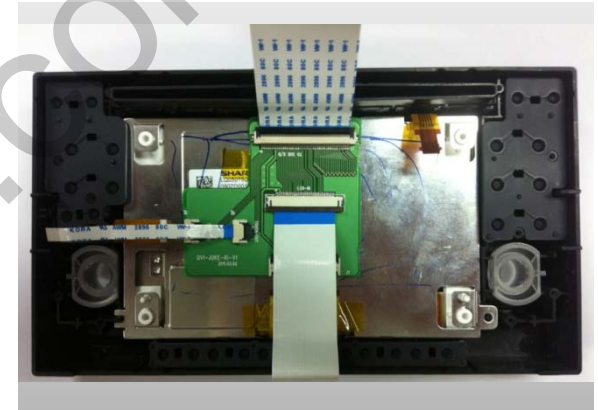
3.2 I/O board & Original button



1. Here are the I/O board and FPC cables.



2. Connect the touch cable after cutting wing of it. Then you can see what is shown above.

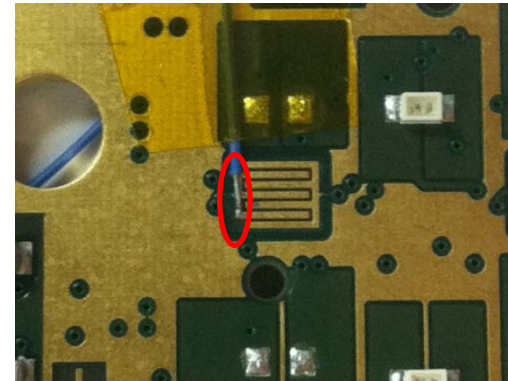


3.



4. Soldering point – the spot near the navigation button on the LCD circuit's front (thin wire)

magnification

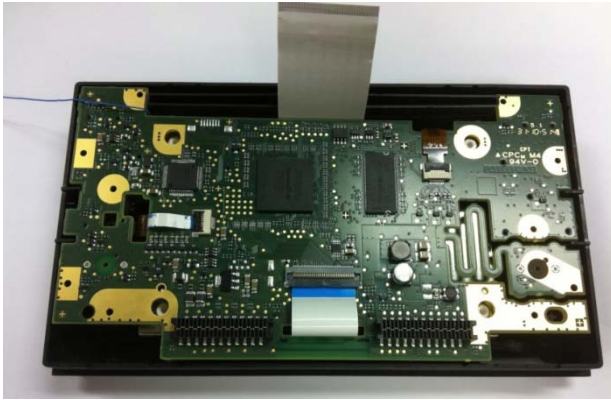


Solder in the marked area shown above using the **black wire**.



3 Installation

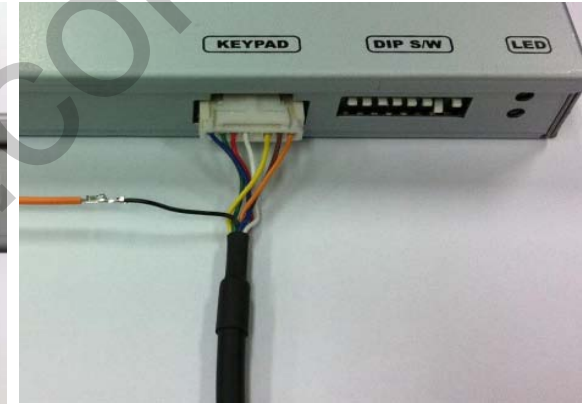
3.2 Sub board



1. Now assemble the circuit onto the back side of the monitor.



2. Here is a picture of Ground cable. Pull out the pin#5 of Ground cable. Connect the opposite end of the soldered wire with pin#5 of Ground cable as shown above.



3. Then assemble the monitor as shown left.

