



Gateway Lite BT

iPod, USB and Bluetooth



Install Guide

v.1.0

GBL-9220-1

1. INTRODUCTION

Gateway Lite BT enables music playback from a USB storage or iPod through your vehicle's entertainment system, using the buttons of the car stereo for basic control.

This device also offers handsfree mobile call handling via the original buttons of the Head Unit (Radio).

Gateway Lite BT is designed to give easy to manage control, in cars where it is not possible to display text, therefore only basic control is available (track skip functions and USB folder browsing).

2. GETTING STARTED

At first please make sure that the vehicle compatibility is correct.

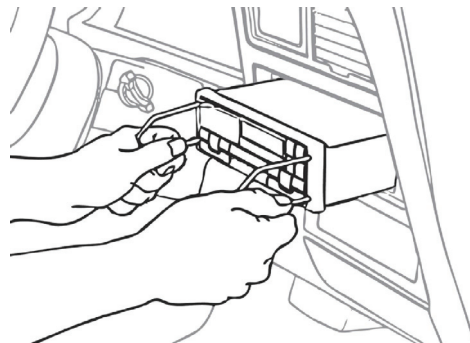
The Dension Gateway Lite BT is available in specific versions for different vehicle types, therefore the exact operation and installation may be different in each case.

Warning!

During the installation always make sure that the ignition key is removed from the car, the radio is switched off and that you have the security code of the head unit (radio) available (if applicable).

3. HOW TO REMOVE THE HEAD UNIT

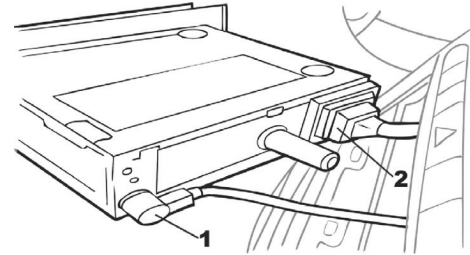
First, carefully remove your vehicle's existing factory fit head unit as per the factory instructions and using the correct tools.



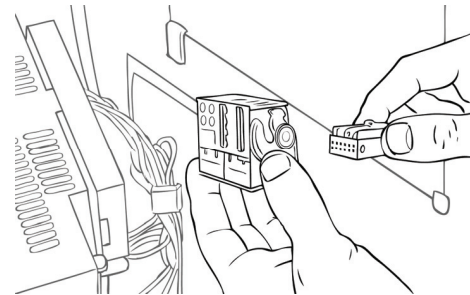
In some cases, removing the head unit will require panel removal as well therefore we recommend to contact your vehicle's dealer or installation supplier / installer for more information.

3. FITTING THE GATEWAY HARNESS

Once the head unit has been removed, disconnect the antenna cable (1) and then unclip the main wiring connector from the head unit (2). This will differ in all makes and manufacturers.



With the main radio cable removed, first connect the Dension supplied cable to the original factory cable harness.



In some cases there may be an add-in connector. Remove the CD changer section and replace with the loom supplied with the Gateway Lite Blue. For further details please go to section 6.

Important installation notes for Volkswagen and Audi owners:

The **free black lead** on the Gateway harness **must be grounded / connected** to the **chassis of the radio**. In case of BMW you don't need to connect this lead.

4. CONNECTION

The below diagram depicts how the different modules connect to the Gateway Lite BT.



Connect the **round iPod connector** and **USB** to the module and feed them through the dashboard to an appropriate location.

Warning! Do not trap the cables, or leave them in a position where they may become trapped after refitting the head unit.

Ensure the device is correctly fitted before running the cable. Then, reconnect the Dension supplied main radio connector to the rear of the head unit.

Connect the **12 way micro-fit** (12 pin molex) to the Car side of the Gateway Lite BT module.

5. INSTALLATION

Fitting the microphone

The microphone will work best when it is kept away from all noise sources (open windows or speaker) and close to the speaker. So the best place to ensure perfect sound is to install at the central light cluster or rear view mirror in the center of the wind screen. There are clips that help you to do this.

The optimal place for the microphone depends on many factors, so it is recommended that you try different installation places before finally mounting the microphone



6. TEST AND REFIT

Before you refit the head unit, test the Gateway Lite BT with your car audio, making sure all connections are correct and that you have full functionality.

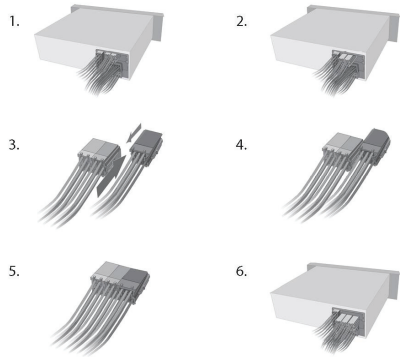
Note: If during testing you notice any changes or inconsistencies in the way the car's electrical system operates, disconnect the Gateway product immediately and consult your dealer.

When you have tested everything, refit your head unit. Take care **not to trap any wires** or the **Dension product**. We supply cable ties to mount the Gateway Lite BT module. **Please mount the module away from heat or damp surfaces.**

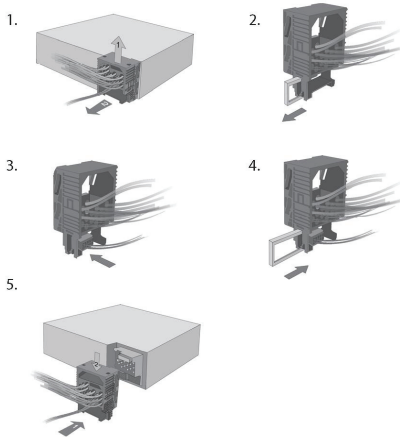
Refit of the Head Unit is the reversal of the removal process for your specific vehicle, as per your manufacturer's instructions.

7. CAR-SPECIFIC CONNECTIONS

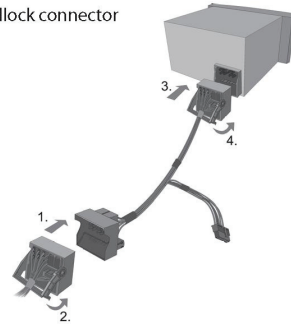
Cars with mini ISO connector



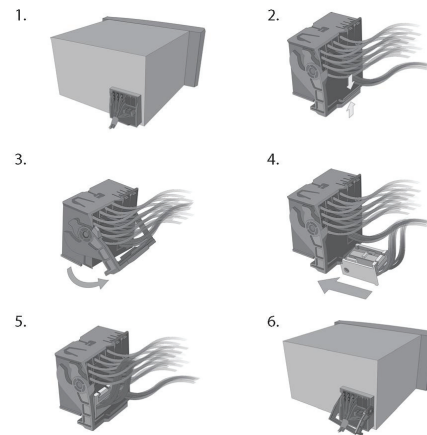
BMWs with 17-pin connector



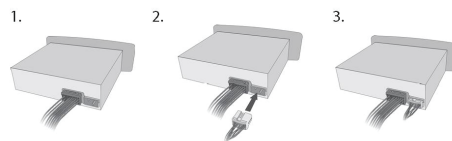
Cars with quadlock connector (break-in):



Cars with Quadlock connector (not break-in)



If the CDC connector has a separate housing



7. DISCLAIMER

All photos / illustrations are for representation purposes only and may differ visually from the equipment in your vehicle. Information correct at time of going to print E. & O. E. Dension Audio Sytems Ltd. and it's registered partners cannot be held liable for any damages caused by the incorrect installation of any Dension product.

8. FURTHER ASSISTANCE

If you need further assistance in using your Dension product, please contact your local supplier or visit www.dension.com/en/support and click on 'Support'.

Please check also **the download section** for the latest firmware version and product documentation, as these may provide additional features or easier use of the product.