

### Gateway Lite MOST For non text capable cars

## Installation Guide

V1.2



GWL-9210-1

## 1 Programming the car for GWL

Gateway Lite emulates a CD changer and uses CD changer controls to access offboard audio sources like iPod and USB devices. If your car is not already equipped with a CD changer, it may be necessary to have the car programmed by your dealer in order to use the GWL, according to the followings:

### BMW non iDrive-4

If original CD changer fitted no programming is required.

If original CD changer not fitted install GWL and retrofit "IPOD" option with service computer. In case of E65 (before 03/2005) retrofit CDC option.

### Mercedes

Generally no programming is required but in some cases (e.g. no device was connected onto the optical ring) it is needed to enable a CD changer with the service computer.

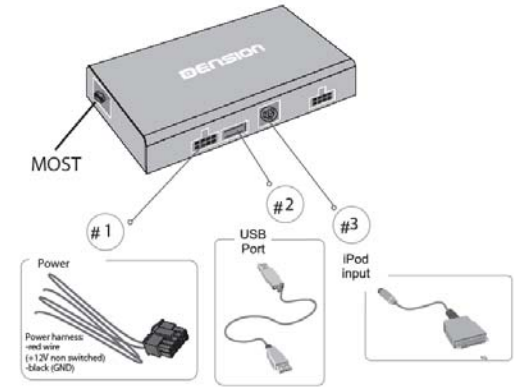
### Porsche

Generally it is needed to enable a CD changer with the service computer.

### Saab 9-3

It is needed to enable a CD changer with the service computer using an original CD changer. (the CD changer is only necessary during the installation process)

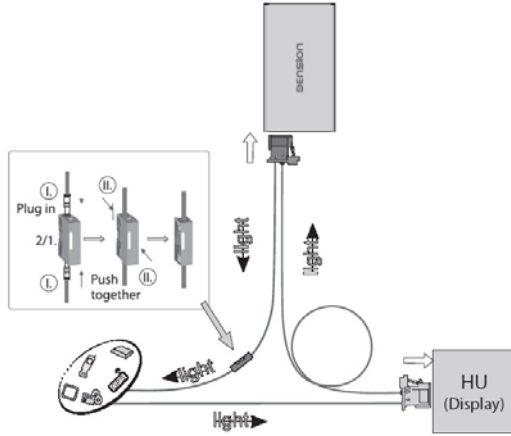
## 2 Connections



### 3 Installation

#### Type A

If you are connecting Gateway Lite to the back of the head unit, use this method:



**Please note:** CD changer retention is not supported, therefore you need to disconnect it from the optical ring if present and loop the optical ring with the separate loop kit. (FOA1TL1).

#### Type B

If you are installing the Gateway Lite to the connector of the CD changer or to a free fibre optic connector in the car (CDC preparation) use this method:



### 4 Car configuration

Before connecting the Gateway Lite MOST (GWL) device to the MOST ring, it requires a car configuration procedure. The default car setting of the GWL is Mercedes. Depending on the car type it requires a different car configuration file.

#### Car configuration procedure of the Gateway Lite MOST:

1. Copy the appropriate GW\_CFG.BIN file to the root of a USB flash drive
2. Connect the flash drive to the GWL MOST when it is not powered
3. Please connect the power cable to the GWL MOST
4. The GWL will start booting. In the meantime the configuration procedure will start automatically. Wait about 1 minute
5. Connect the GWL to the MOST ring
6. Turn the ignition & Head Unit ON and test the GWL functionalities
7. Finish the installation of the Gateway Lite MOST

The car configuration files can be downloaded from the download section (Configuration files) of the Dension website: [www.dension.com](http://www.dension.com)

### 5 Test and refit

Test the Gateway Lite with your car audio, making sure all connections are correct and that you have full functionality.

**Note:** If during testing you notice any changes or inconsistencies in the way the car's electrical system operates, disconnect the Gateway product immediately and consult your dealer.

Take care not to trap any wires and cables or the Dension product. Refit is the reversal of the removal process for your specific vehicle, as per your manufacturer's instructions.

*All photos/illustrations are for representation purposes only and may differ visually from the equipment in your vehicle. Information correct at time of going to print E. & O. E. Dension Audio Systems Ltd. and its registered partners cannot be held liable for any damages caused by the incorrect installation of any Dension product.*

Need more help?  
Please visit: [www.dension.com/support](http://www.dension.com/support)