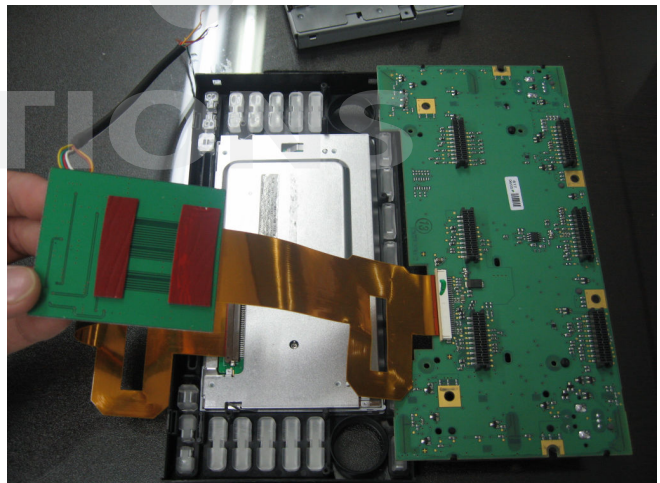


Touareg Installation Guide

You need to disassemble the monitor unit in order to install VW Touareg interface. Please beware of this.
WE DO NOT TAKE ANY RESPONSIBILITY FOR DAMAGES ON THE MONITOR UNIT DURING/AFTER THE INSTALLATION



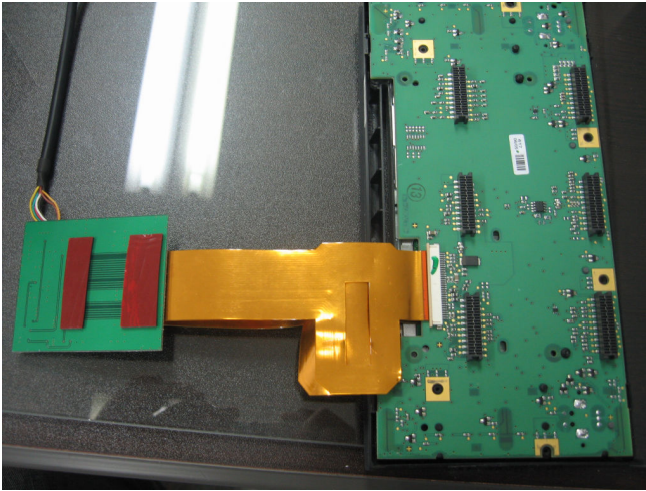
1) Unscrew all the bolts on the side and the bottom part of the monitor.



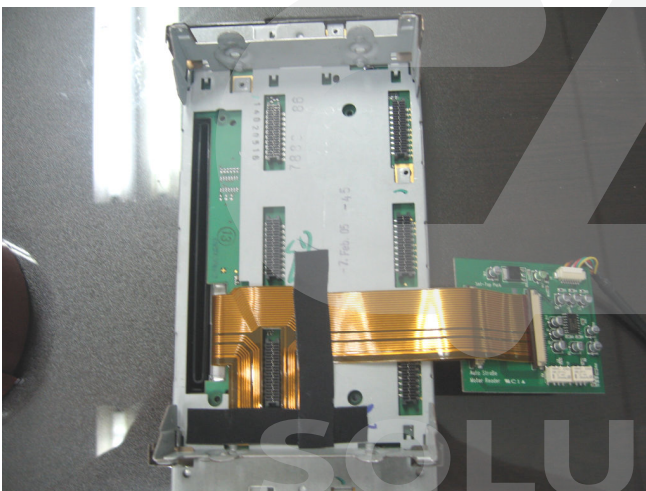
2) Take out the LCD of the monitor and take out the ribbon cable that goes into the LCD panel. Then, connect one of the ribbon cables from the interface to LCD panel and the other one to LCD panel board like the photo above.

* In order to have the good ribbon cable connection, double check the contact surface well.

* If the ribbon cable is twisted or not connected properly, this can be the cause of Commend damage.

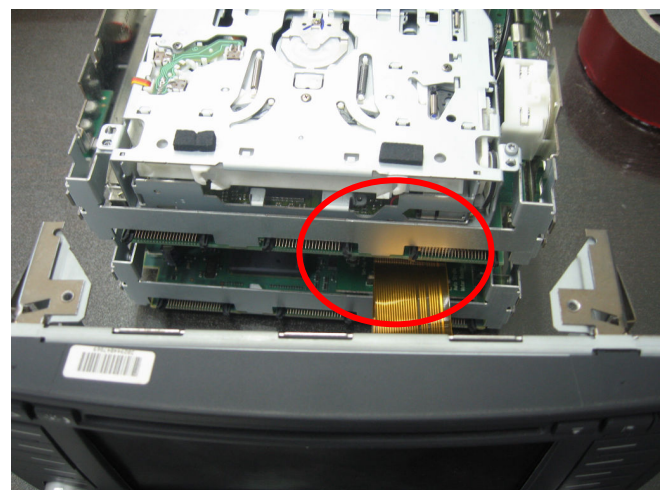


3) After the ribbon cable connection, assemble the LCD Panel and the board again. Like the photo, the interface should be connected while assembling.



4) Fix the Ribbon Cable connector like the photo above. It will prevent the connector to touch the Ribbon Cable. And then take out the interface ribbon cable to the back of the main unit.

5) Place it where it has indicated with the red Circle on the photo. Use the double sided tape to fix it. Assemble the monitor in reverse order.





- Touareg interface only allows registering the RGB input. (Only the samples are made at the moment)

RGB arrangements are as shown on the photo, which are R/G/B/Sync/GND/Control + 12V / ACC + 12V

Connect a switch to Control +12V, once the +12V goes through, the screen switches to the exterior screen mode.

Use this interface to Connect Navigation, and for the DVD, GAME and etc. can connect audio and video to the TV Tuner

TV Tuner input-----blue 56 pin connector

Audio L ----- no. 46

Audio R ----- no. 47

Audio GND – no. 48

Video signal – no. 52

Video GND – no. 53