

Release date : 2011.09.19

Model : CSVI-ESC07-v6.0 / Product code : ESC07-1109-001

Video Interface for Cadillac Escalade EXT, ESV, Hybrid, SUV, Cadillac STS, SLS 2007-2012 **Installation Manual**

Contents

1. Before installation

1.1 Precautions-----	3
1.2 Main specifications-----	4
1.3 System diagram -----	5
1.4 Components -----	6
1.5 Exterior -----	7

2. Setup

2.1 Remote controller-----	8
2.2 How to use mode switch button -----	9
2.3 Main cable pinout -----	10
2.4 USB touch screen controller-----	11
2.5 OSD menu (On Screen Display)-----	12

3. Installation

3.1 Connection to monitors without Compact Flash card -----	15
3.2 Connection to monitors with Compact Flash card -----	22

4. Troubleshooting ----- 27

1.1 Precautions

- Ignition key should be taken off before starting installation, interface power connection must be the last step in installation.
- Power cable should be separated during interface connection.
- There should be no any electronic devices or magnetic pole around installation place.
- All steps of installation should be performed by well-trained specialist.
- Dismantling without manufacturer permission cannot be guaranteed (it is prohibited to break attached label on the board.)
- Check package content when receiving the product. If anything is missing, inform the supplier or manufacturer.
- According to our sales policy any problems caused by user mistake or carelessness can not be guaranteed.

1.2 Main Specifications

1. Inputs

- 1 x **Video DATA** (*OEM video input from vehicle main PCB*)
- 1 x **Analog RGBCs** (*for navigation system RGBCs with C-sync*)
- 1 x **PC RGBHV** (*for CarPC with 640 x480px resolution, 60 Hz; 800x480px, 60 Hz – with PowerStrip software*)
- 1 x **REAR-C Input** (*for external rear view camera source, supports NTSC & PAL auto detection*)
- 2 x **CVBS1, 2 Input** (*for external video source - DVD, TV, DVB-T; supports NTSC & PAL auto detection*)
- 1 x **Touch In** (*for OEM touch screen panel*)

2. Outputs

- 2 x **A/VOU** (*video/audio output for headrest monitors- CVBS1 mode copy*)
- 1 x **Touch OUT to Navi** (*OEM touch screen panel connection to Navi connected via RGBCs input or CarPC connected via RGBHV*)
- 1 x **Touch OUT OEM** (*connection to vehicle main PCB*)
- 1 x **Monitor Output** (*video output for connection to OEM display LCD panel*)

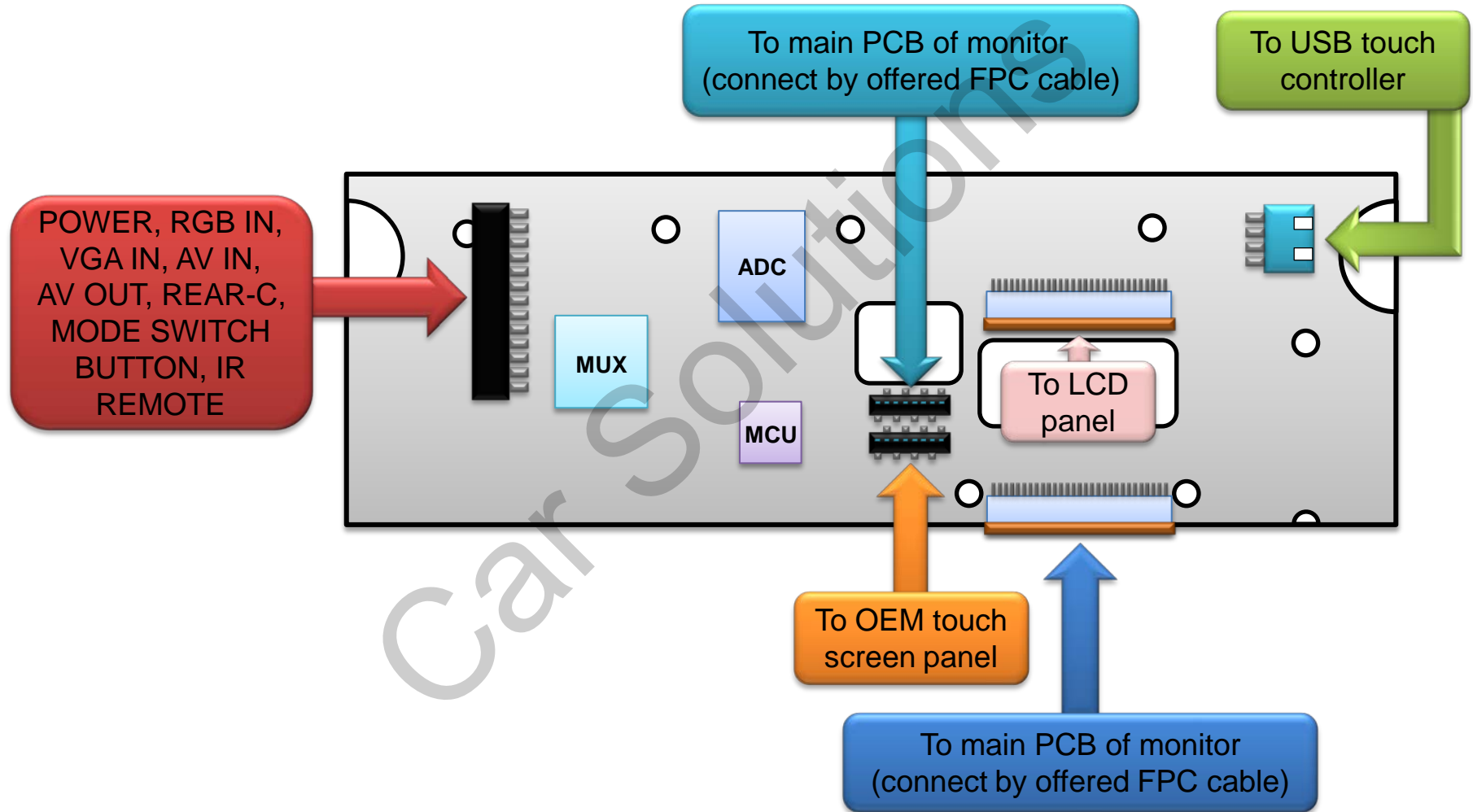
3. Power

- Input power : 7 V DC ~ 18 V DC
- Consumption power : 1.8 W @ 12 V

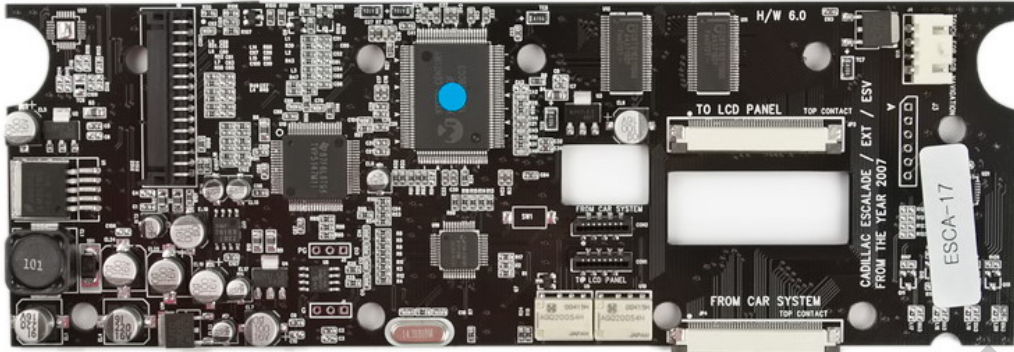
4. Function

- Video input disable: possible to skip each input source by OSD menu settings.
- Control by using the remote controller.
- Possible to switch between modes by remote mode switch button.

1.3 System Diagram



1.4 Components



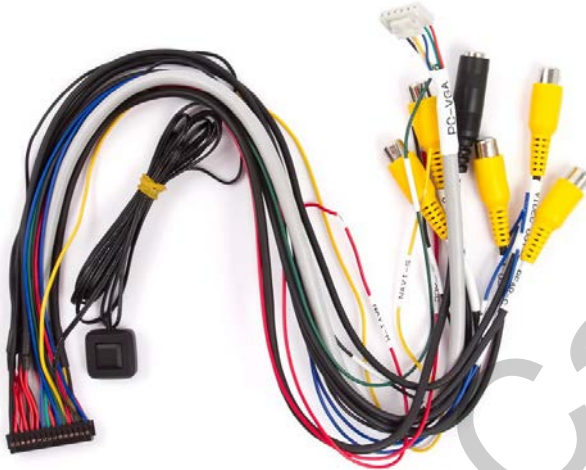
Video interface main board x 1 pc.



IR Remote controller x 1 pc.



IR receiver x 1 pc.



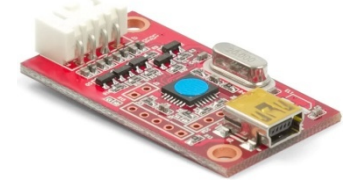
MAIN cable x 1 pc.
(Power, RGB IN, VGA IN, AV IN,
AV OUT, REAR-C, MODE
BUTTON, REMOTE)



VGA connection sub
board x 1 pc.



Flat cable (FPC) x 2 pc.



USB touch controller x 1
pc. (**ONLY for CarPC**)

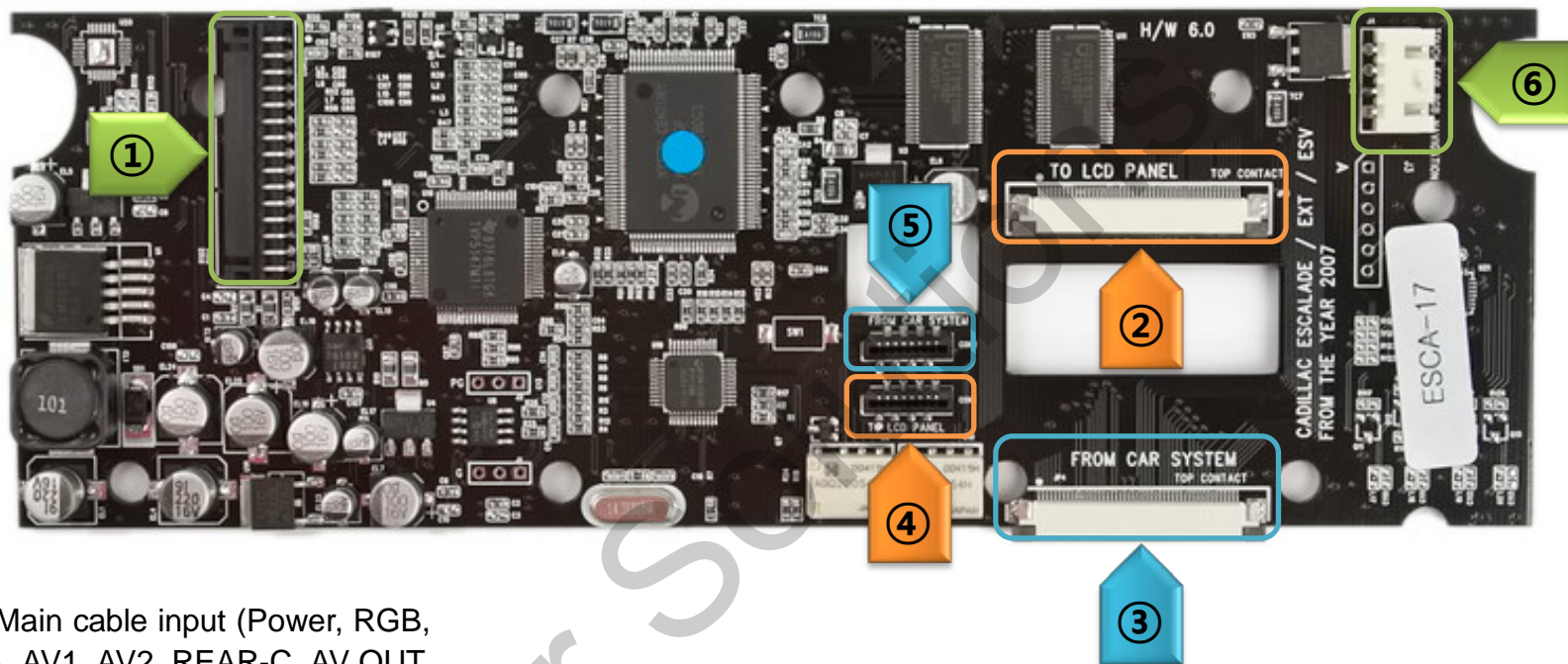


Flexible cable x 1 pc.



Mini USB cable x 1 pc.

1.5 Exterior



① Main cable input (Power, RGB, VGA, AV1, AV2, REAR-C, AV OUT, IR receiver, mode switch button)

② TO LCD PANEL – connect by OEM FPC cable

③ FROM CAR SYSTEM – connect to display main PCB by offered FPC cable

④ TO LCD PANEL – connect OEM touch screen panel flat cable

⑤ FROM CAR SYSTEM - connect to display main board by offered flat cable

⑥ TO TOUCH CONTROLLER – connect to offered USB touch controller by offered flexible cable in case of Car PC connection. **In case of CS9100 navigation box connection use another USB touch screen controller!**

2.1 Remote Controller

Buttons	Function
Power, 0-9, Mute, DMB/DAB	NOT USED
★	Factory reset – press 2 sec.
SOURCE, MODE	Source change
SCAN	Auto config in CarPC mode
MENU	OSD menu ON/OFF
CH ▲	UP in OSD menu
CH ▼	DOWN in OSD menu
VOL ►	RIGHT in OSD menu
VOL ◄	LEFT in OSD menu
PC	CarPC input select
DMB	OEM picture select
AV	AV inputs select (AV1>AV2>AV1...)



2.2 How to Use Mode Switch Button

PRESSING

➤ If you press the button video source will be changed.

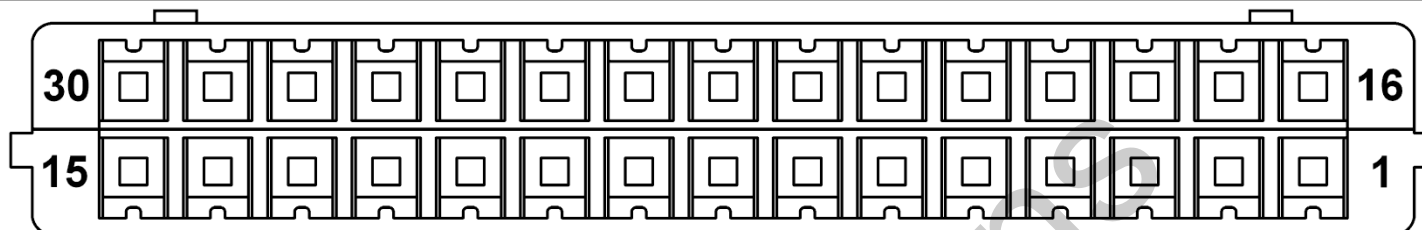
HOLDING – 3sec.

➤ Hold button for 3 seconds in Original Display Mode to enter Engineer mode. You must open all sources including rear view camera for signal auto check. Follow step by step installation instructions.



MODE SWITCH BUTTON

2.3 Main Cable Pinout (view from wire side)

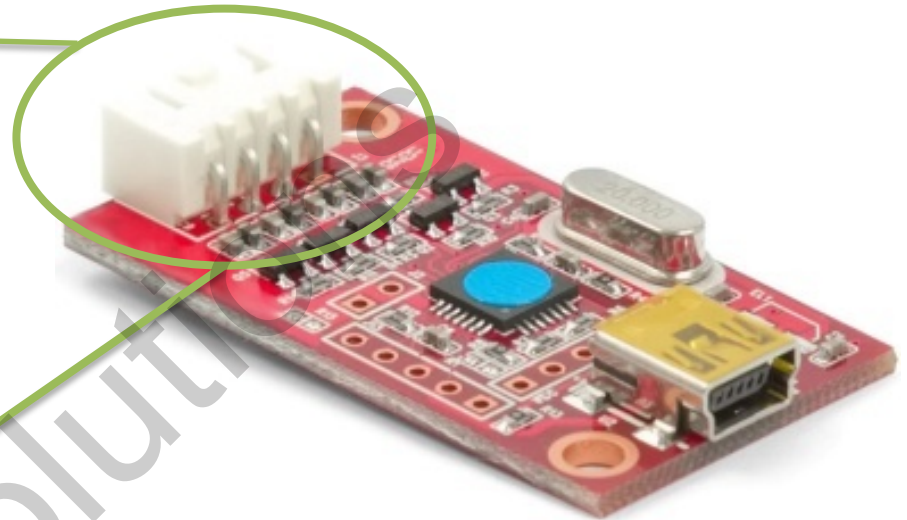
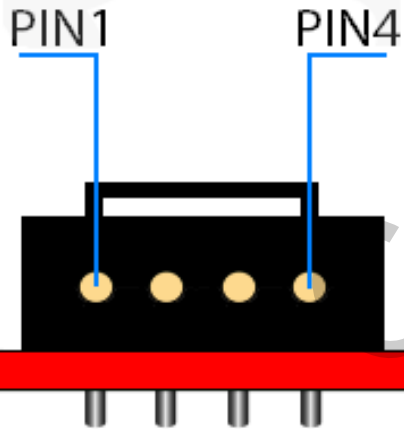


Contact #	Contact purpose
1	POWER ACC +12V DC INPUT
2	GND VIDEO OUT 1
3	GND VIDEO OUT 2
4	GND VIDEO INPUT 1
5	GND VIDEO INPUT 2
6	GND REAR CAMERA INPUT
7	(Car PC) VGA INPUT V SYNC
8	(Car PC) VGA INPUT H SYNC
9	(Car PC) VGA INPUT GND
10	NOT USED
11	(NAVIGATION) RGB INPUT CSYNC
12	(NAVIGATION) RGB INPUT GND
13	IR RECEIVER DATA
14	IR RECEIVER GND
15	IR RECEIVER +5V DC INPUT

Contact #	Contact purpose
16	POWER GND -12V DC INPUT
17	VIDEO OUT 1
18	VIDEO OUT 2
19	VIDEO INPUT 1
20	VIDEO INPUT 2
21	REAR CAMERA INPUT
22	(Car PC) VGA INPUT BLUE
23	(Car PC) VGA INPUT GREEN
24	(Car PC) VGA INPUT RED
25	(NAVIGATION) RGB INPUT BLUE
26	(NAVIGATION) RGB INPUT GREEN
27	(NAVIGATION) RGB INPUT RED
28	MODE BUTTON
29	MODE BUTTON
30	REAR CAMERA ACTIVATION

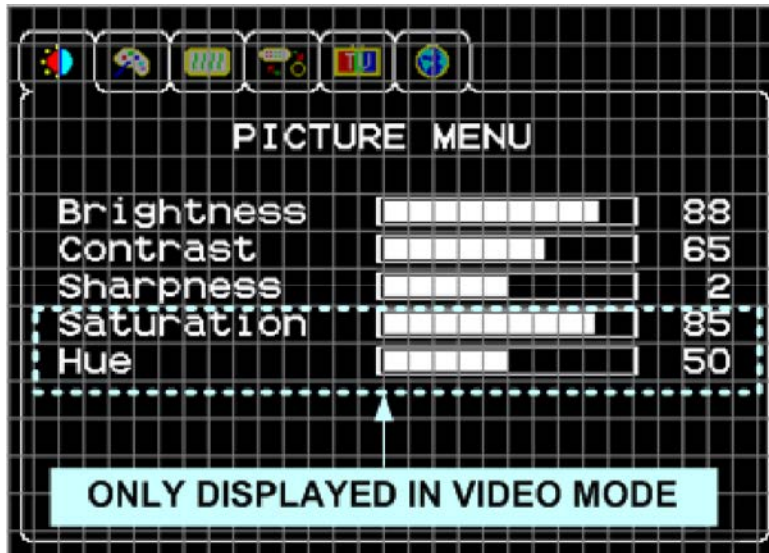
2.4 USB Touch Screen Controller

PIN	OUT
1	X -
2	Y -
3	X +
4	Y +



This USB touch screen controller fits for connection only to Car PC with 95, 98, XP, Vista 32bit, 7 32 bit operation systems. You can download drivers for these systems [on the product page](#) at our web site. In case of connection to navigation boxes (e.g. CS9100) with WinCE 5.0, WinCE 6.0 operation systems, you will need another [touch screen controller](#).

2.5 OSD Menu (On Screen Display)



PICTURE MENU (image adjustment)

In this menu you can adjust the following image parameters for any video input:

- Brightness
- Contrast
- Sharpness
- Saturation – only in AV1, AV2 modes
- Hue – only in AV1, AV2 modes

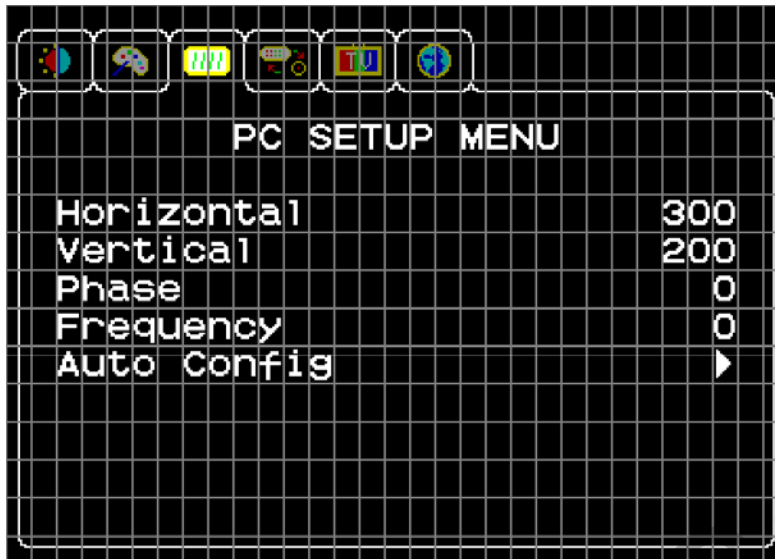


COLOR MENU (color rendering adjustment)

In this menu you can tune chroma level for any video input:

- Color Temperature
- Red
- Green
- Blue

2.5.1 OSD menu (On Screen Display)



PC SETUP MENU

In this menu you can adjust following image parameters for VGA input:

- Horizontal – horizontal position
- Vertical – vertical positions
- Phase – image stabilization
- Frequency – image sharpness
- Auto Config – automatic adjustment

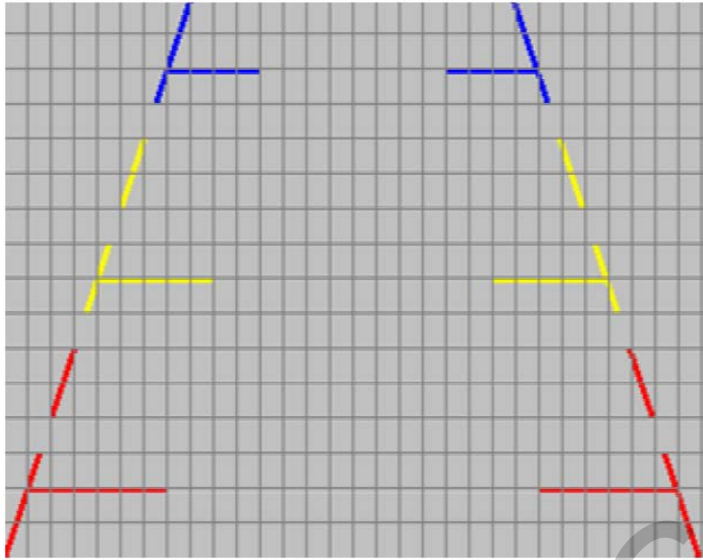


SOURCE CONTROL MENU

In this menu you can turn on / off video inputs:

- Original – OEM image
- PC – VGA video input
- Navigation – RGB video input
- Video 1 – AV1 video input
- Video 2 – AV2 video input
- Rearview – input for rear view camera

2.5.2 OSD menu (On Screen Display)



SOURCE CONTROL MENU

continuation

- Rearview – input for rear view camera. In this menu item you have to select the camera which will be used when reversing. Also you can enable parking guidelines for aftermarket rear view camera.



FEATURES MENU

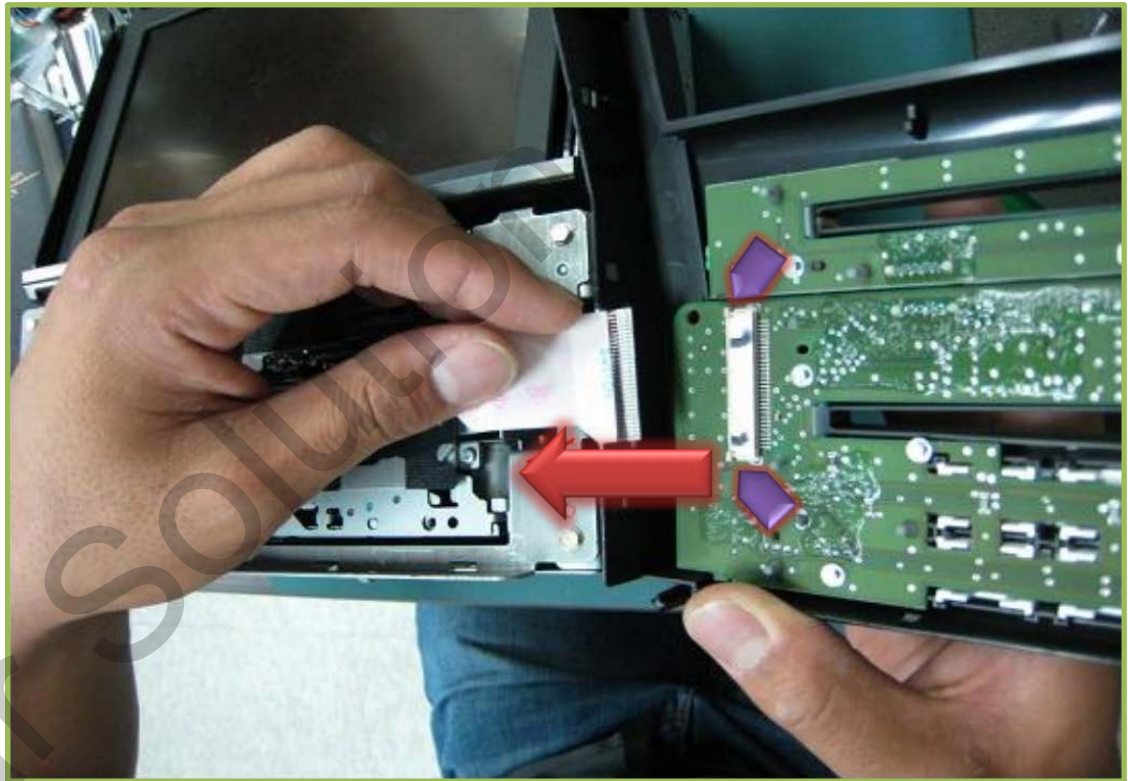
- Car Name – car type selection
- FirmwareMajor – main firmware version
- FirmwareMinor – additional firmware version
- Factory Reset – all settings reset

3.1 Connection to Monitor without Compact Flash Card



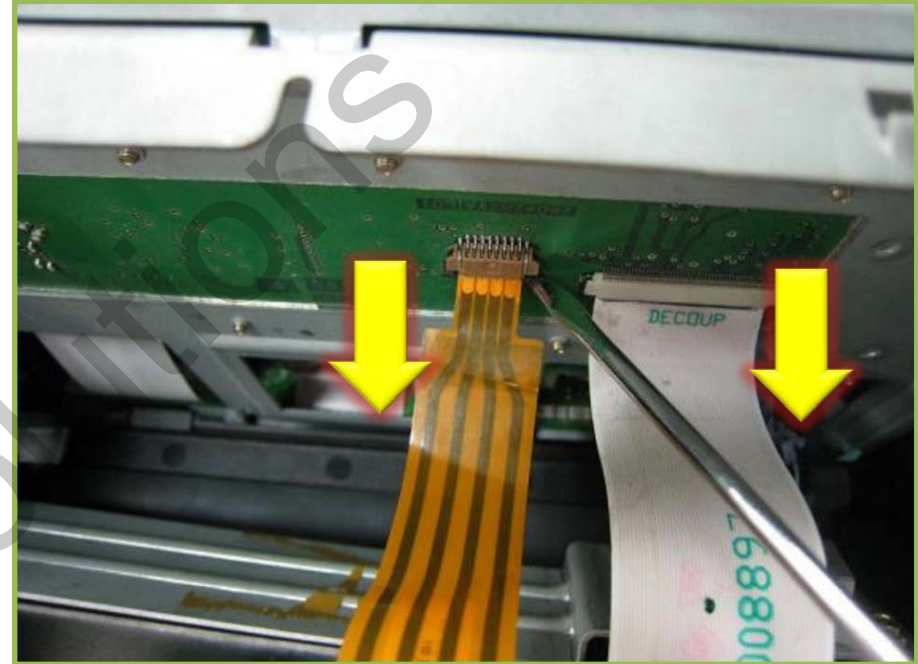
Here you can see monitor from cars of 2006-2009 model years. In these monitors DVD is used for navigation maps usage. These discs are inserted in the slot pointed by green arrow in the picture. Once you've dismantled monitor you can proceed to interface installation. First of all twist off screws circled in red.

3.1.1 Connection to Monitor without Compact Flash Card



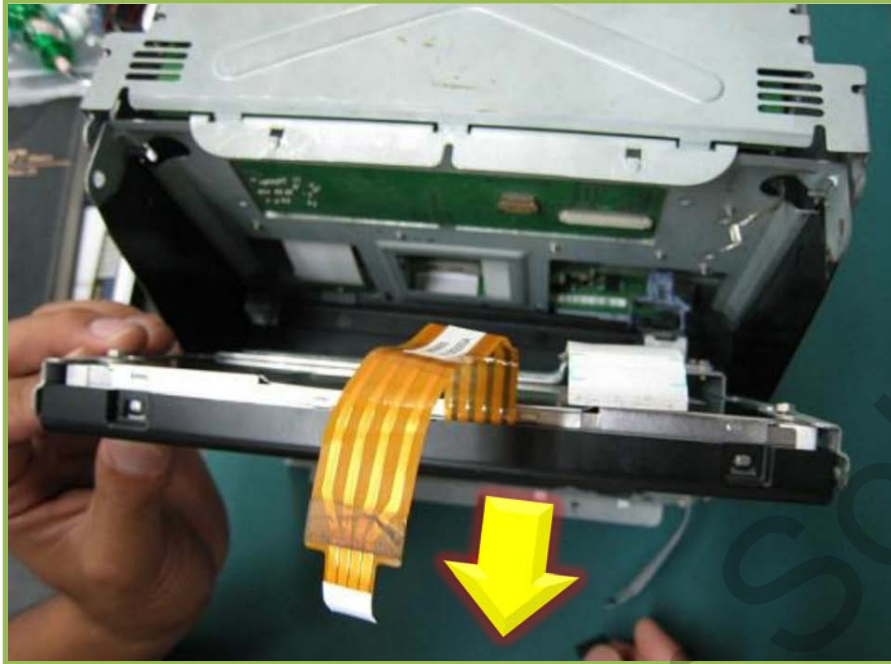
- Carefully dismantle plastic frame fixed by detents on the edges. Pull off the frame for ~5 cm and turn it with your left hand as indicated by red arrow in the picture. Be careful not to damage anything (*we recommend performing whole procedure with display in horizontal position since the frame holds LCD panel !!!*).
- After turning plastic frame, disconnect flexible flat cable from the board fixed on the frame. First, carefully open lock pins (*violet pointers*). Then disconnect flat cable.

3.1.2 Connection to Monitor without Compact Flash Card



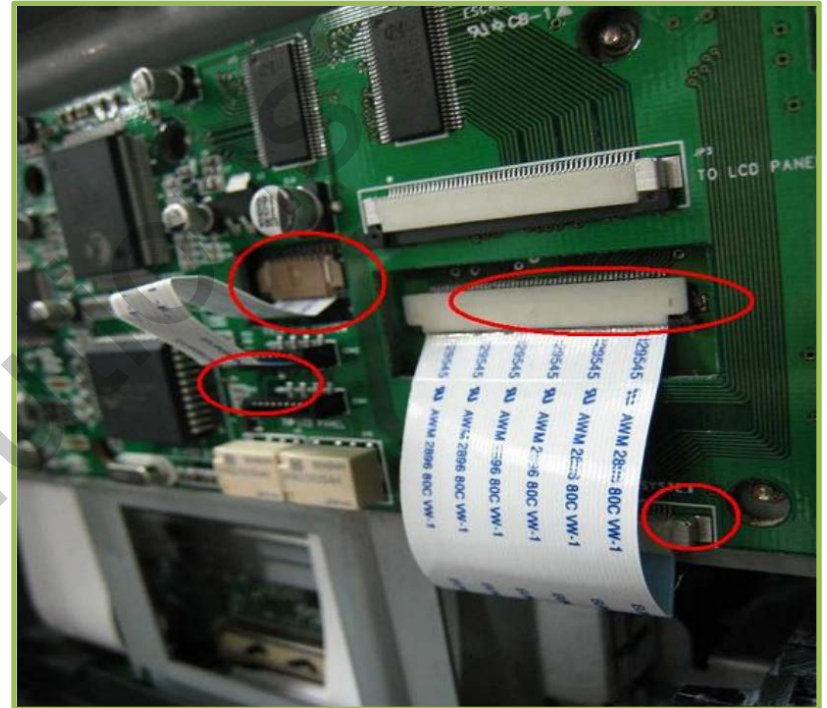
- Carefully pull on LCD panel for few centimeters and move it down for a couple of centimeters.
- Hold LCD panel, open flexible flat cable lock pins in the socket using screwdriver or plastic tool.

3.1.3 Connection to Monitor without Compact Flash Card



- Remove touch screen panel FFC and LCD FFC from the socket.
Please, remember contacts position on OEM flexible flat cables. Put LCD panel aside.
- Connect offered flat cables to OEM sockets and close lock pins in the sockets. Note! Offered flexible flat cables shall be installed the same side with contacts as removed OEM flexible flat cables. In case of incorrect flat cable installation image will not be displayed.

3.1.4 Connection to Monitor without Compact Flash Card



- Install video interface main board as shown in the picture. **Note! Contacts located on the video interface main board back side shall not touch metal frame to which main board is connected. We suggest placing non-conductive material (e.g. thin plastic) between board and metal frame.**
- Connect wide FFC to «**FROM CAR SYSTEM**» socket on the board. Connect narrow FFC to «**FROM CAR SYSTEM**» socket on the board.

3.1.5 Connection to Monitor without Compact Flash Card



- Connect main cable and USB touch screen controller cable to video interface board and lay them in the monitor framework. **We recommend wrapping the cable around with cloth insulating tape to avoid cables chafing by metal ends of the framework.**
- Connect OEM LCD panel wide flat cable to wide «**TO LCD PANEL**» socket.

3.1.6 Connection to Monitor without Compact Flash Card



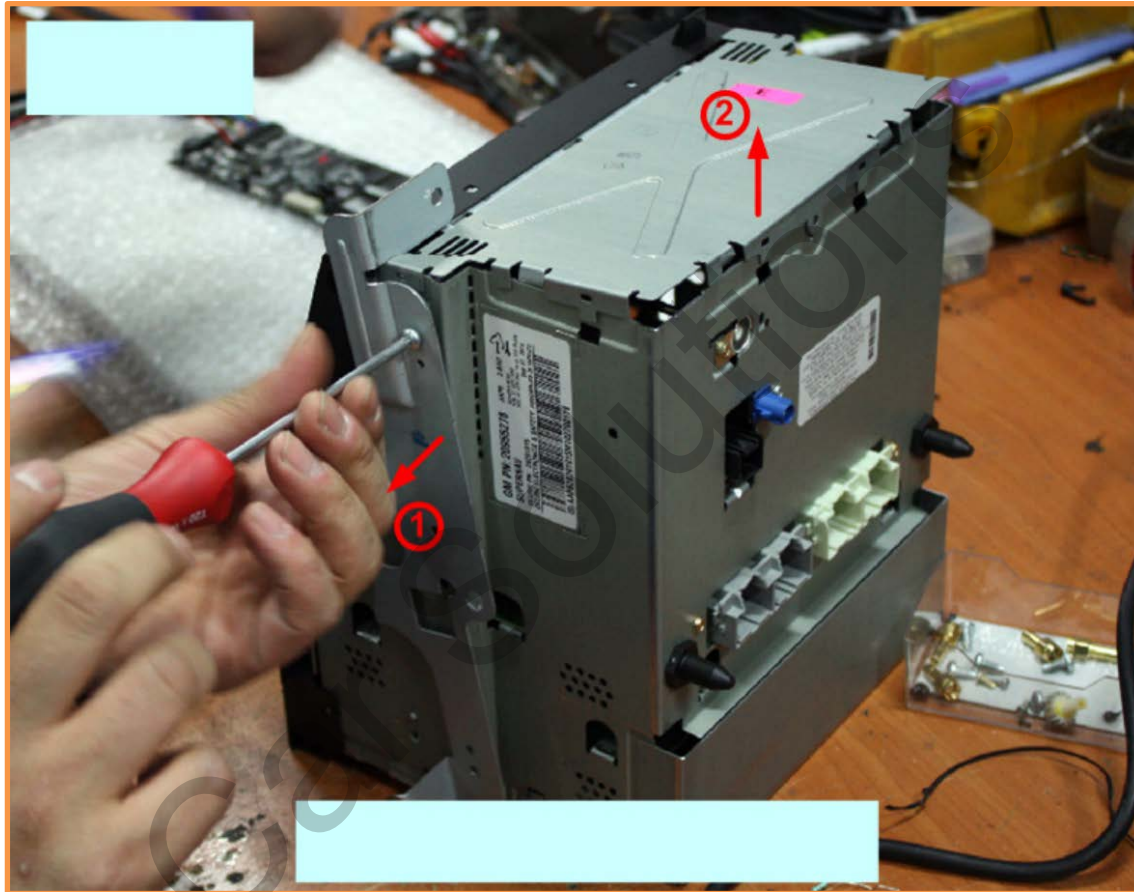
- Connect narrow FFC (*often it's brown*) from OEM touch screen panel to narrow «**TO LCD PANEL**» socket.
- Carefully attach LCD panel back. In case panel does not fall into place carefully adjust flat cables or video interface main board holders.
- Assemble monitor in reverse order and install it in its original place. Apply power to video interface and connect all video devices.

3.2 Connection to Monitor with Compact Flash Card



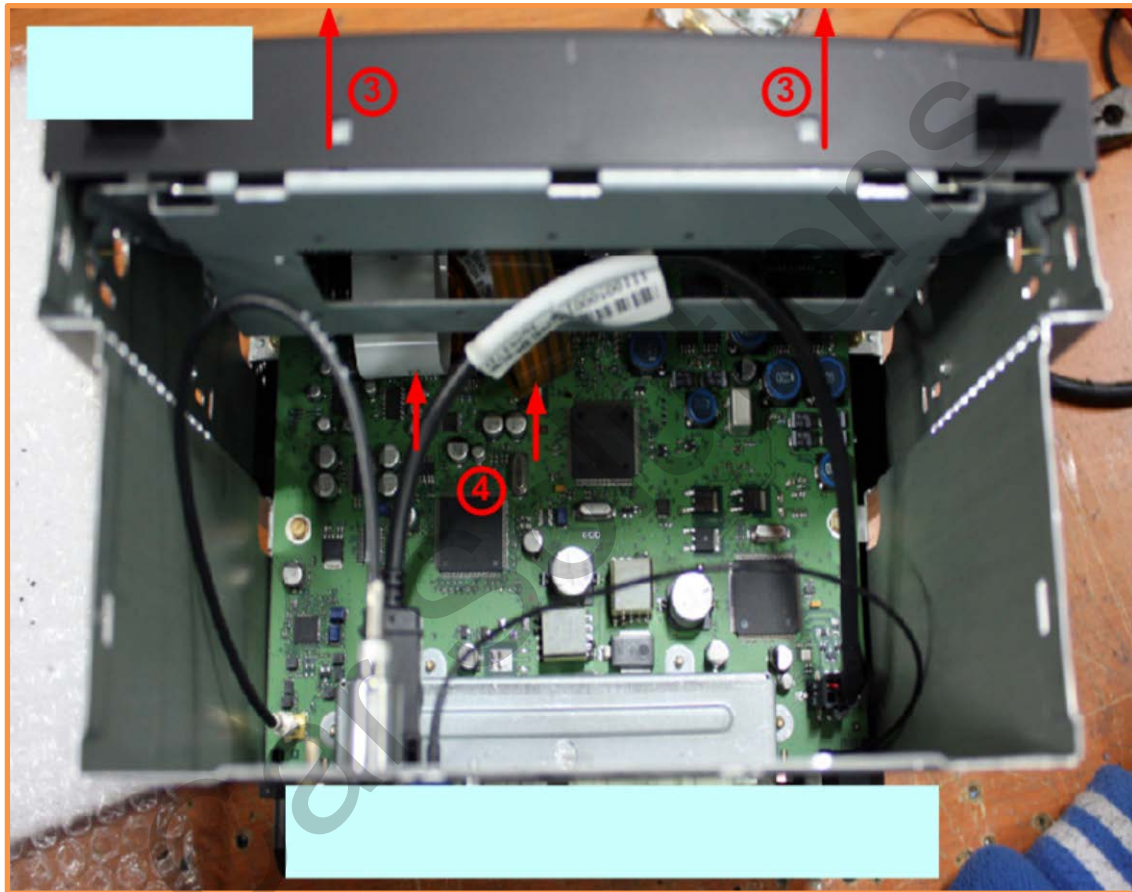
Here you can see monitors from cars of 2009-2012 model years. In these monitors CF memory card is used for navigation maps usage. It is inserted in the slot behind blanking plate pointed in the picture by green arrow. Once you've dismantled the monitor we can proceed to video interface installation.

3.2.1 Connection to Monitor with Compact Flash Card



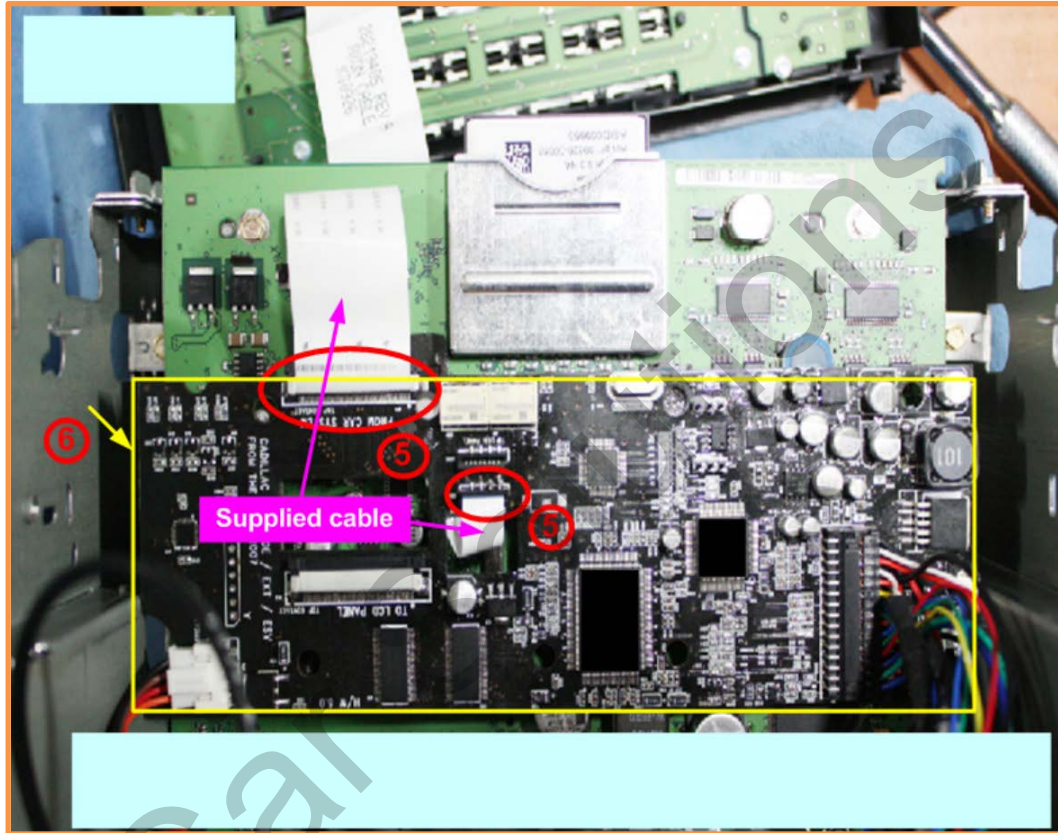
- ① Twist off screws holding metal plates on both sides.
- ② Remove monitor metal upper cover.

3.2.2 Connection to Monitor with Compact Flash Card



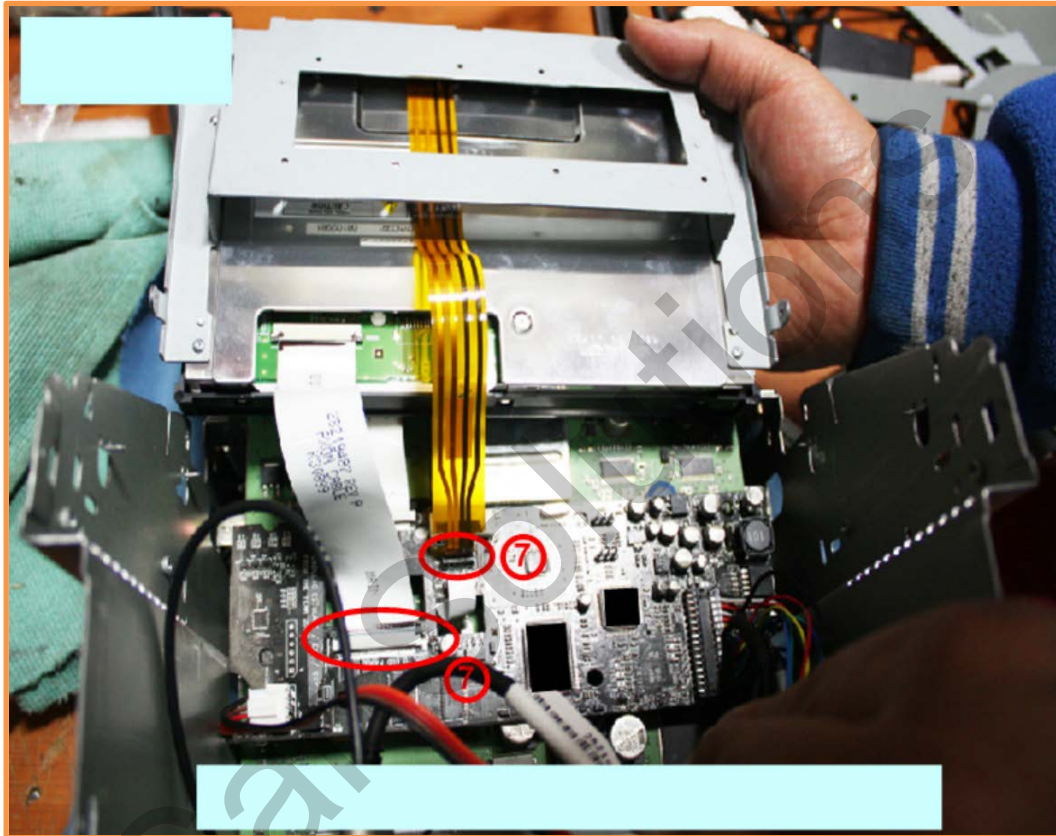
- **3** Carefully dismantle plastic frame holding LCD panel.
- **4** Be careful not to damage LCD panel and touch screen panel flexible flat cables. Disconnect FFCs from monitor main board.

3.2.3 Connection to Monitor with Compact Flash Card



- ⑤ Connect display main board and «**FROM CAR SYSTEM**» video interface socket by wide flexible flat cable. Do the same with narrow flat cable.
- ⑥ Fix video interface main board as shown in the picture and connect main cable and USB touch screen controller cable. We recommend wrapping the cable around with cloth insulating tape to avoid cables chafing by metal ends of the framework.

3.2.4 Connection to Monitor with Compact Flash Card



- 7 Connect LCD panel OEM wide flat cable to wide «**TO LCD PANEL**» socket of video interface. Do the same with touch screen panel narrow flat cable.
- Assemble monitor in reverse order and install it in its original place. Apply power to video interface and connect all video devices.

4 Troubleshooting

Q. I cannot switch A/V sources.

- A. Check main cable connection. Check whether main cable and/or mode switch remote button cable are not damaged. Check IR receiver connection.

Q. Black screen is displayed after connection.

- A. Check flat cables connection. Make sure that main cable is connected. Using tester check whether 12 V are supplied to certain contacts of main cable (see page 10). Check and activate corresponding video inputs in OSD menu (see page 13).

Q. Displayed image color and brightness are incorrect (too dim or too bright).

- A. Try to adjust brightness, contrast and colors in the relative OSD menu items (see page 12).

Q. Image from rear view camera connected via REAR-C input is not displayed when reversing.

- A. Check REAR-V wire connection (see page 10) to rear lamps 12 V line.

Q. Black screen blinks when changing modes.

- A. Check and activate corresponding video inputs in OSD menu (see page 13). If all video inputs are activated in OSD menu they will be switched in the following cyclic order: **OEM->VGA->RGB->AV1->AV2.**

Q. OEM image is not displayed.

- A. Check flat cables connection. Check and enable corresponding video inputs in OSD menu (see page 13). If the problem still exist inform technical support.

Q. Screen is white, no images are displayed.

- A. Check flat cables connection. If the problem still exist inform technical support.