

Cadillac Escalade INTERFACE [GM07ES] INSTALL MANUAL

- Escalade (GM07ES) INTERFACE Part List



PCB Board



Cable



USB Cable



PC Touch driver CD

The Touch screen can be used to control a PC based Car Computer.

The VGA cable, USB cable and PC Touch Screen driver must be

Installed on the Car Computer in order for it to recognize the device

We need to purchase additional cable for when A/S is requested.

STEP 1: Take off molding from the glove box above the passenger side.
Take off the trim surround around the monitor.
Disassemble 7mm bolts then take out the monitor.



STEP 2: Screw off the star bolts front of the monitor.



STEP 3: Take out the Plastic cover in front.

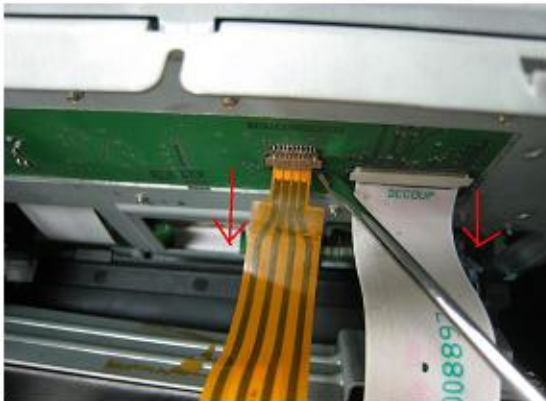


STEP 4: Carefully separate the ribbon cable.

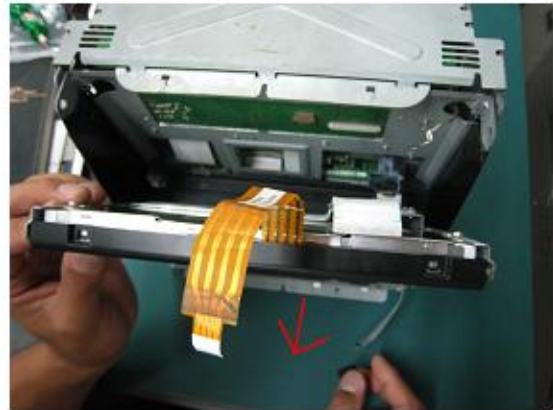




STEP 5: Disassemble LCD.



STEP 6: Separate the Original ribbon cable.



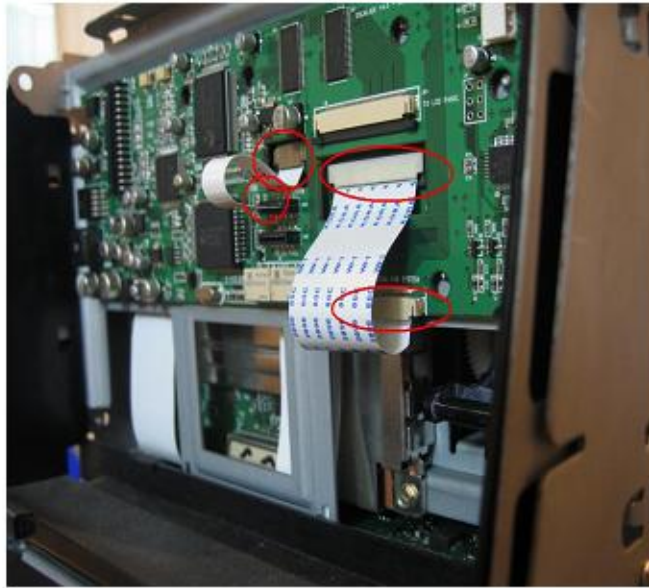
STEP 7: Disassemble LCD.



STEP 8: Slot supplied Cable in to the disassemble place.



STEP9: Mount the INTERFACE.



STEP 10: Route the Supplied Cable like the picture and connect them.



STEP 11: Remove the cover above the monitor.



STEP 12: Route the connected cable into the hole as shown in the picture.



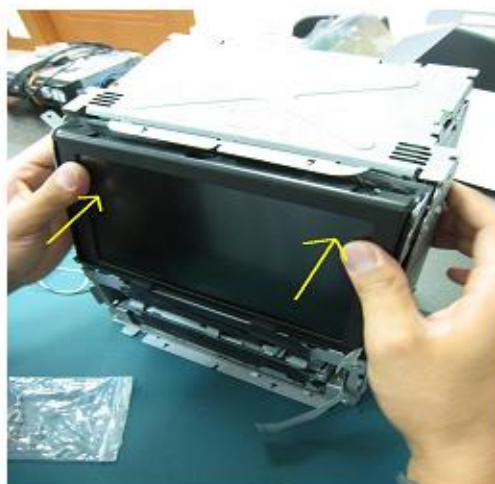
STEP 13: Route the connected cable as shown the picture.



STEP 14: Reassemble the Cover.



STEP 15: Connect the Original Cable to the LCD as shown in the picture



STEP 16: Reassemble the monitor.



(DVB-T)



(NAVIGATION)

Test unit to see if factory display Shows on the screen.
Select between the different sources to see, if unit shows different inputs.
Before you completely re-install the unit into the dash, it is a good time to adjust the menu display settings.

*** After connections are made.**

- First, test unit to see if factory display shows on the screen. Then select between the different sources to see, if unit shows different inputs. Before you completely re-install the unit into the dash, it is a good time to adjust the menu display settings.

**** Warnings**

- We are not responsible for any damages due to misuse of the Interface. Be very careful to avoid any possible damage to the car. Read the installation guide before you start the installation.
- Turn off all the power supplies while connecting the Video Connections. There will be damage to damage the monitor and unit if you try to install the interface while the KEY is in the ON position.