

PORSCHE CAYENNE INSTALLATION GUIDE



We don't have any responsibilities for purchasing and installing our products. We do not take any responsibilities for the misuse of the products. ALWAYS BEWARE TO AVOID DAMAGES ON THE CAR DURING INSTALLATION.



1) Remove the center bezel

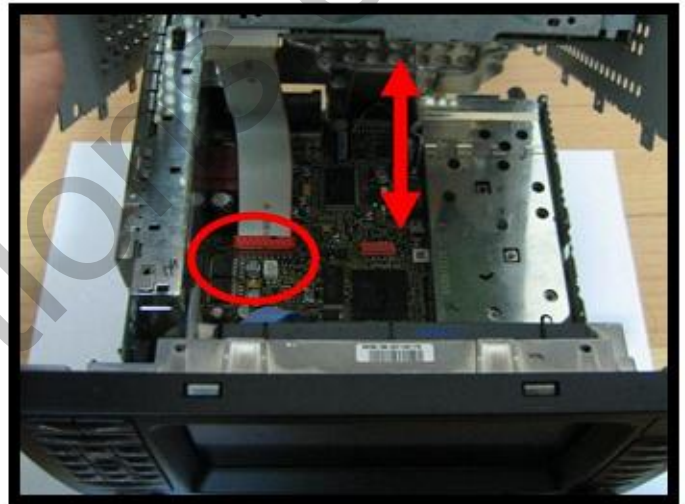
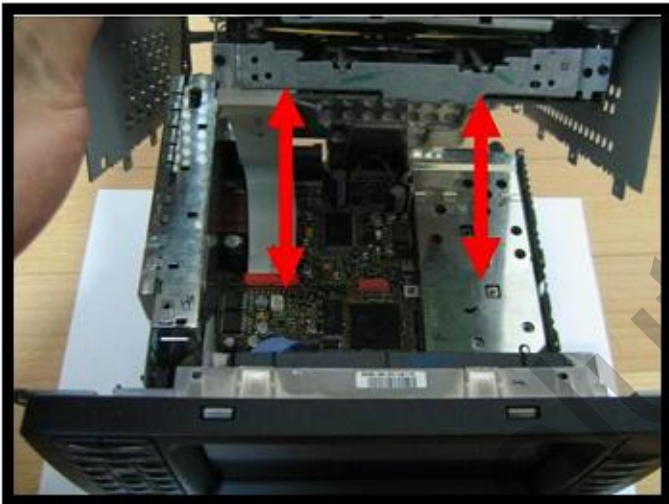


2) Unscrew the 4 bolts and then remove the Command.

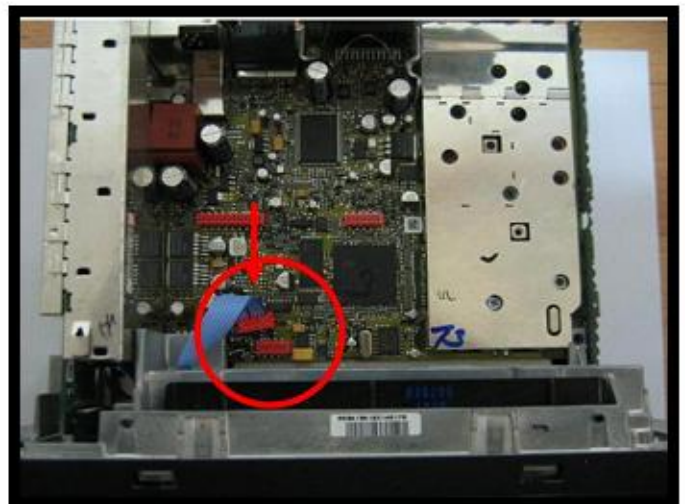




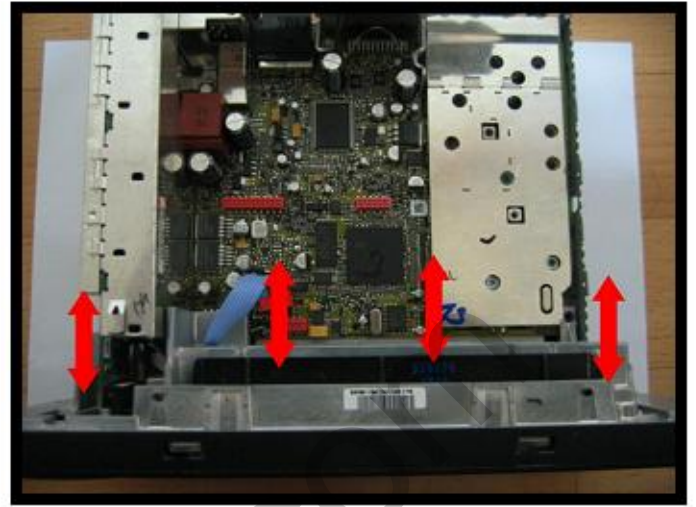
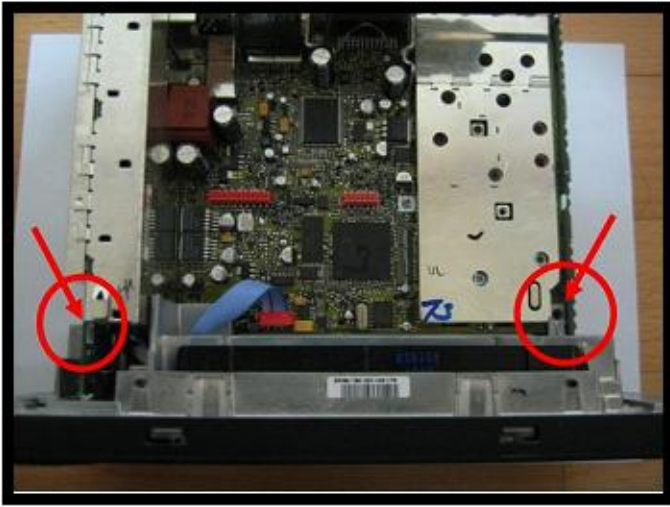
3) Unscrew the 2 bolts.



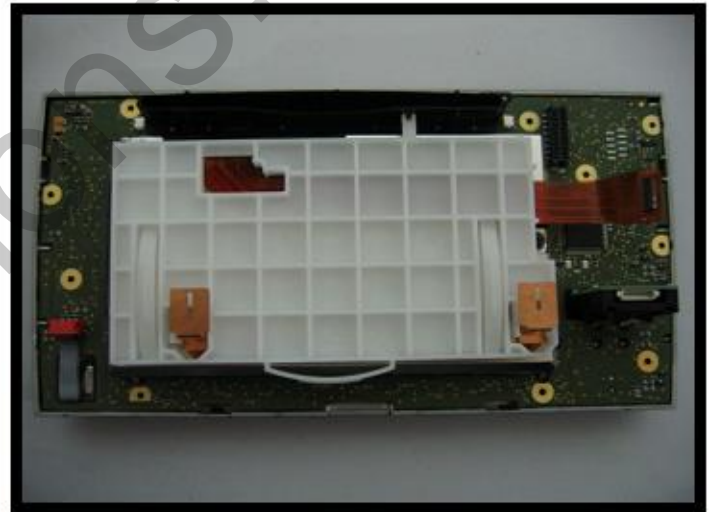
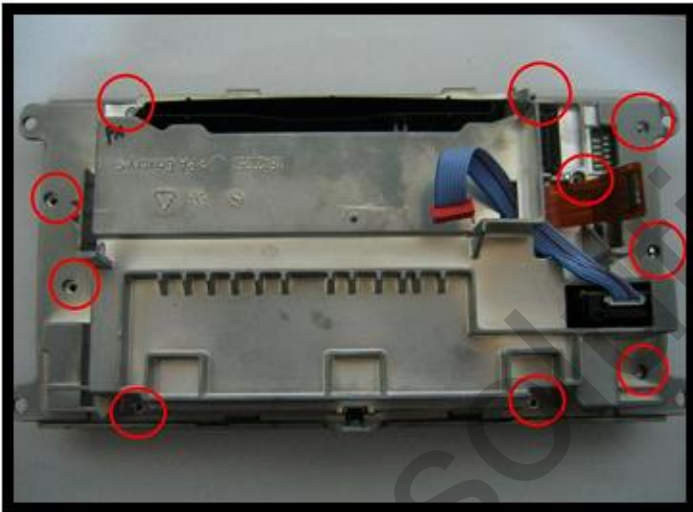
4) Lift up the front cover of the Commend. Disassemble the Connector then disassemble the cover completely.



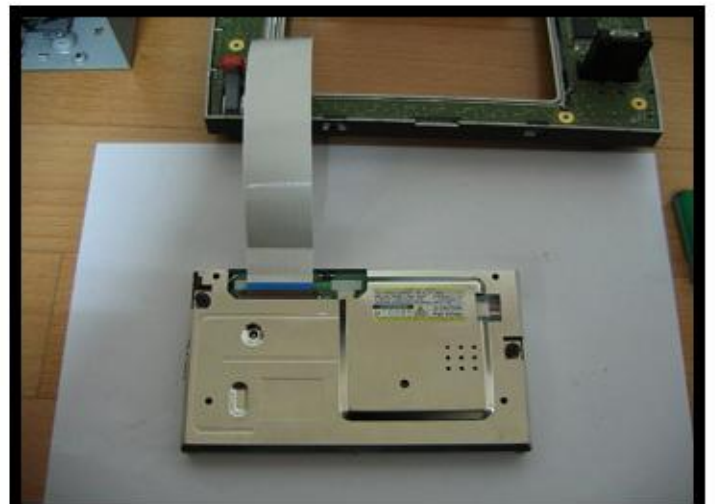
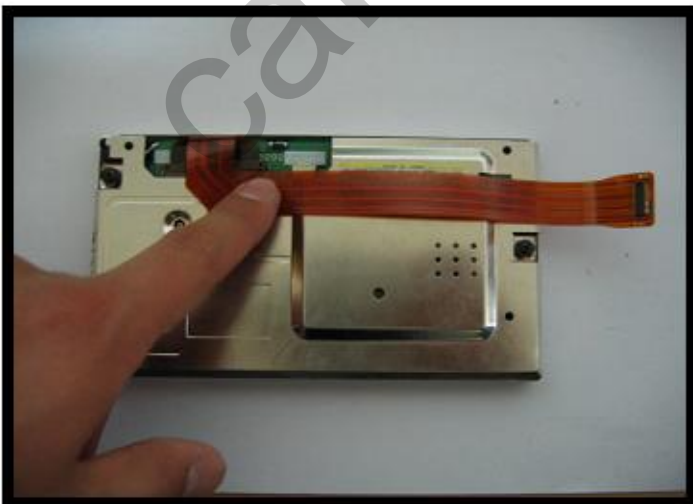
5) Detach the original FCC Cable from the board then detach the Connector. (Attention required for the delicate FCC cable.)
support@car-solutions.com



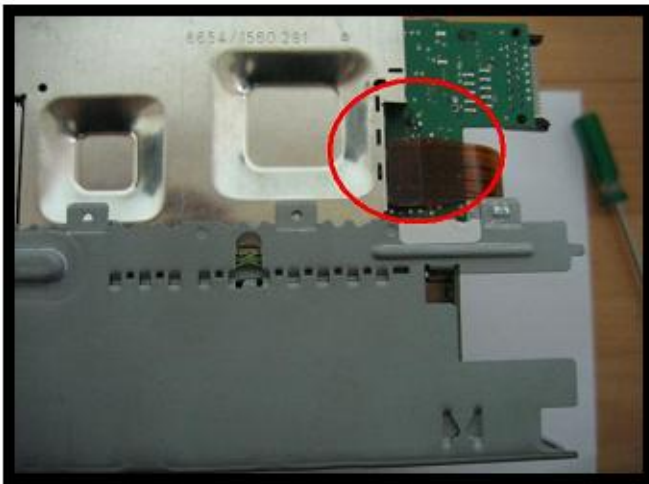
6) Unscrew the 2 bolts and detach the LCD from the body of the Command.



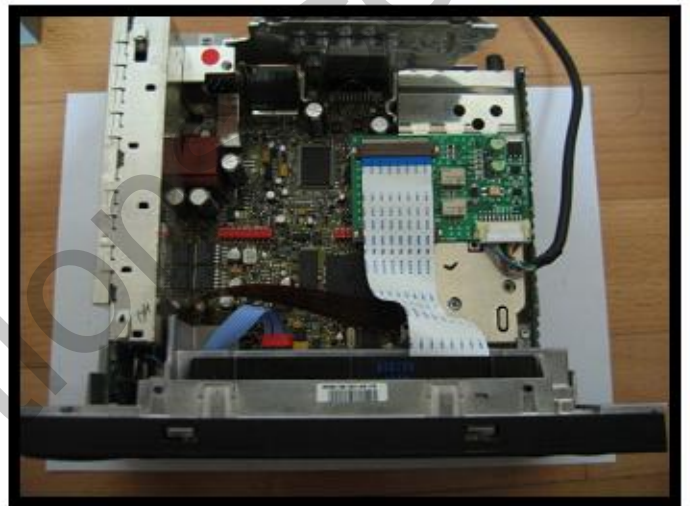
7) Unscrew 10 bolts and remove the LCD cover .



8) Disconnect the original FCC cable. Connect the supplied FCC cable to the board.



9) Connect original FCC Cable to MAIN IN on the SMALL BOARD.



10) Connect FCC cable from LCD to SMALL BOARD LCD OUT and then connect to the RGB CONVERTER.



11) Assemble in reverse order to complete the assembling