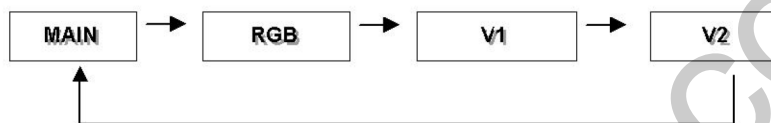


## 2007 GM(NTSC) INSTALL MANUAL

### \* DIP SWITCH SET UP

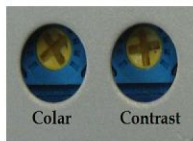


	1	2	3	4
OFF	RGB	V1	V2	OEM Back camera X
ON				OEM Back camera O

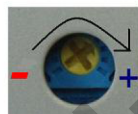


**EX:** When the V2 connected back camera, No3 must be OFF.  
When the V2 connected video, No3 must be ON.

### \* PICTURE SET UP



Turn the screw to "+" direction



Decrease      Increase

### \* Composite Video IN- Put



### \*LED



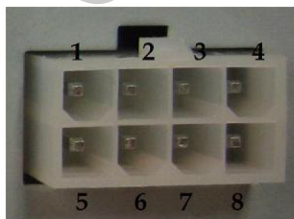
Running LED (Green)

; The light must be twinkle "always"

Source Input LED (Orange)

; The light must be "ON" when the source comes in.

### \*8PIN CONNERTOR



1: Power 12V+ (RED)

2: Parking (Green): The screen can be changed by interconnection with car GND

3,4,6: N/C

5(W), 8: Button Switch; When press the switch then source be changed

5(B): Power GND

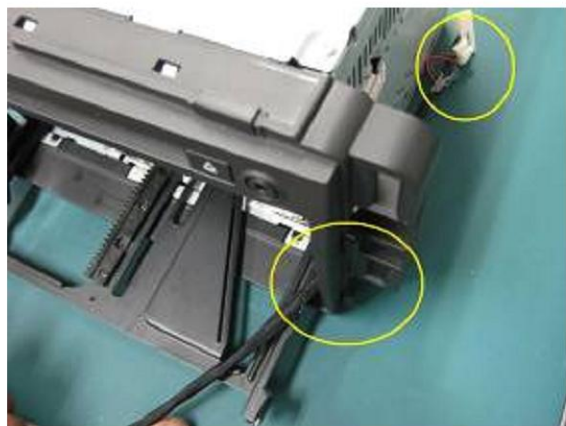
7: Back light Lamp



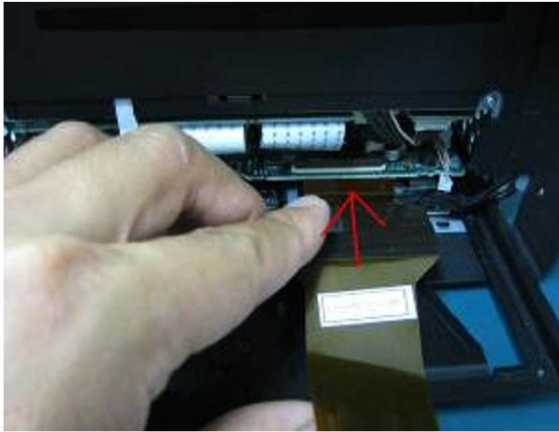
**STEP 1: Disassemble LCD.**



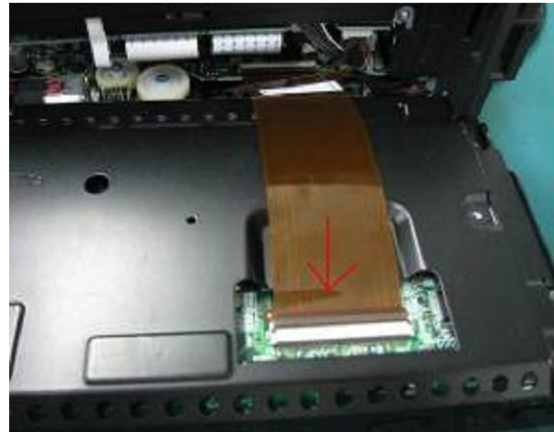
**STEP 2: Separate the Original File Cable.**



**STEP 3: Insert Supplied Cable.**



**STEP 4: Connect Supplied Cable to Monitor.**



**STEP 5: Connect Supplied Cable to LCD.**



**STEP 6: Make sure to see if these Connections are secure.**



**STEP 7: Connect Cable to INTERFACE.**

**STEP 8: Assemble the Monitor.**



### (DVB-T)

Test unit to see if factory display Shows on the screen.

Select between the different sources to see, if unit shows different inputs.

Before you completely re-install the unit into the dash, it is a good time to adjust the menu display settings.

#### **\* After connections are made.**

- First, test unit to see if factory display shows on the screen. Then select between the different sources to see, if unit shows different inputs. Before you completely re-install the unit into the dash, it is a good time to adjust the menu display settings.

#### **\*\* Warnings**

- We are not responsible for any damages due to misuse if the Interface. Be very careful to avoid any possible damage to the car. Read the installation guide before you start the installation.
- Turn off all the power supplies while connection the Video Connector. It can damage the monitor and unit if you try to install the interface while the KEY is in the ON position.