

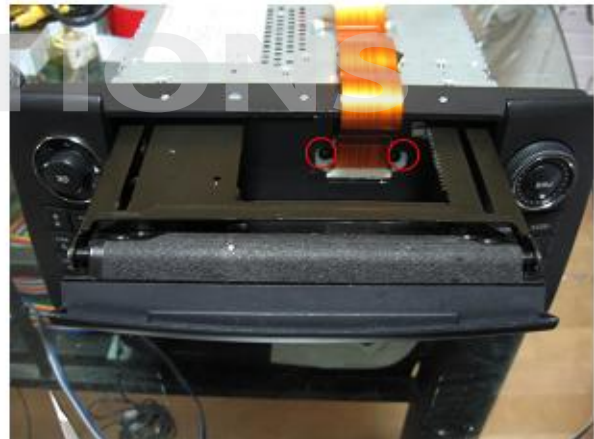
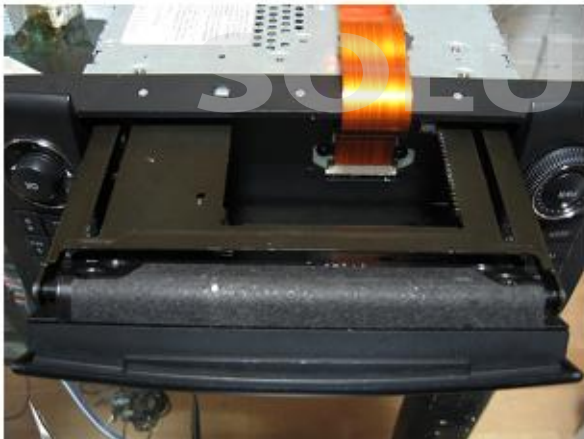
W164 US VERSION INSTALLATION GUIDE



1. Push the button to Eject. Turn over (Flip over) the monitor.



2. Take out the plastic cover. Push the clip gently which holds the ribbon cable. Then take out the ribbon cable.



3. Open the slide then take out the ribbon cable pin.



4. Take out the ribbon cable carefully then connect small board LCD IN.



5. Connect LCD OUT cable to LCD. Put the plastic cover back to its position.



6. Push the ribbon cable in like the picture. Then install the ribbon cable with little twist. It has to be twisted to prevent the cable get hooked on the rail. .



DVD Playr.

*** Warning ***



- If you connect ribbon cable wrong while connecting small board LCD OUT/LCD IN, it would destroy (or troubled) the monitor. Be careful with the connection.
- We will not pay for the troubled monitor that caused by installer's fault