

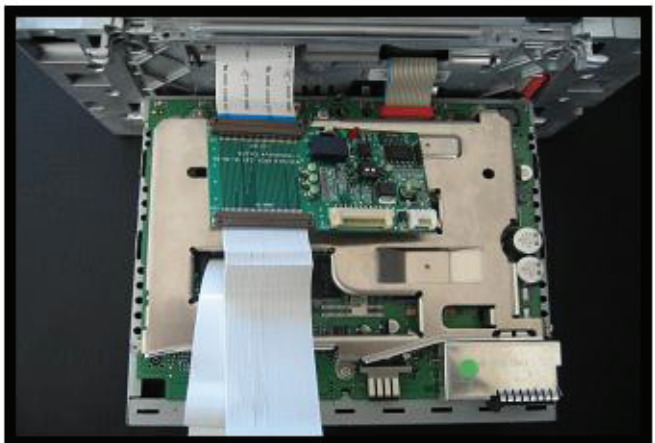
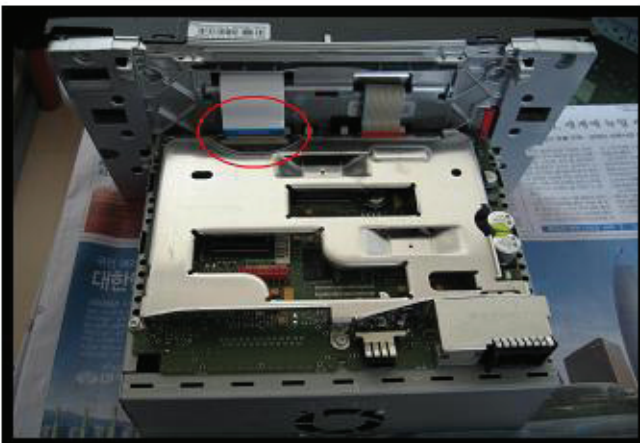
W211 INSTALLATION MANUAL



1. Unscrew the case bolt.



2. Lift the cover. Disconnect the flexible wire and remove the upper part.



3. Take the flexible Wire and connect it to LCD OUT on the interface board.



4. Connect the flexible wire of **MAIN IN** with commend.



5. Fix the board with the both side tape and take the cable out from commend.



Navigation (aftermarket)