

Peugeot 607/407

Installation/Connection Manual

Safety Advices Before Installation

Caution:

Installation requires special knowledge and should be done by trained personnel.

Please read these instructions carefully before you start your work!

Even twice or more times, if needed.

Please work with caution and patience.

Use suitable and recommended tools only and handle all parts with special attention.

Follow to the regulations concerning the vehicle's electric system.

Remove the ignition key before you start the installation!

Take care that no electric consumers are still switched on!

The car's electric system must be in a state of quiescent current!

Installation may only be done during idle status.

Thereby please pay attention to the car's manufacturer requirements.

This interface is to be used in cars with 12V negative ground only!

3) Removal of The Front – Monitor



1) Remove the Center Bezel



2) Remove four Screws



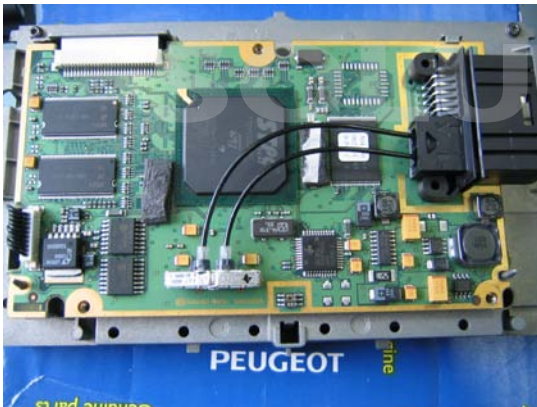
3) Disconnect the Cables
and remove the monitor

4) Monitor

1) Remove the Cover



Remove three Screws

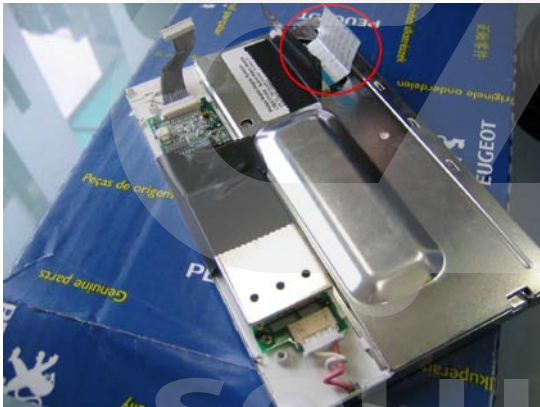


Remove the back cover of the Monitor

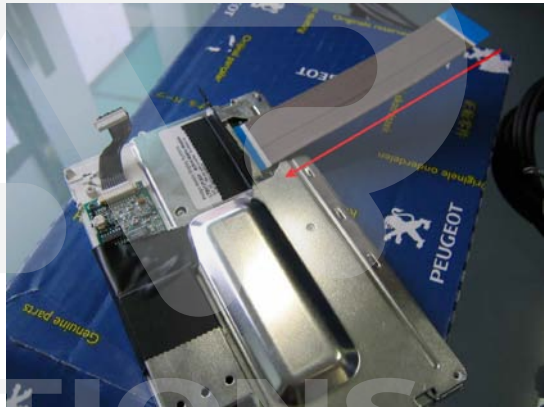
2) Disconnect the Cables and remove PCB Board



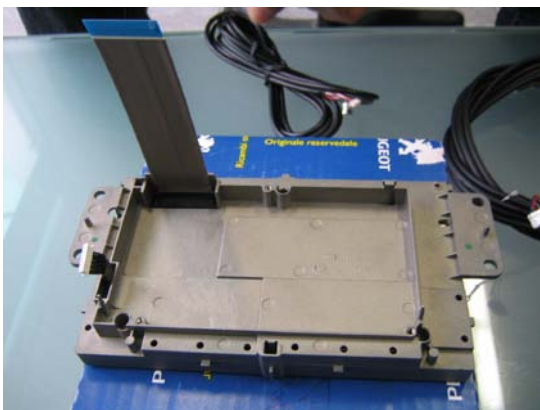
3) Connect FCC In & Out



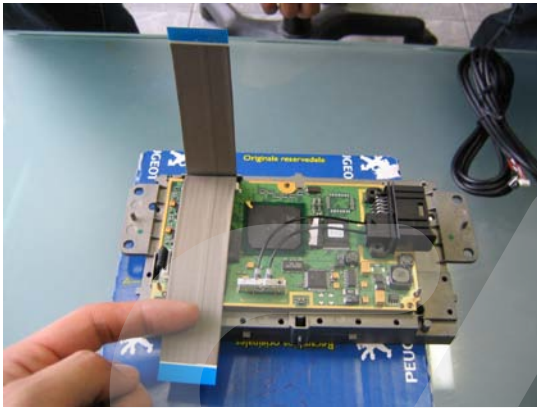
Remove original factory FCC



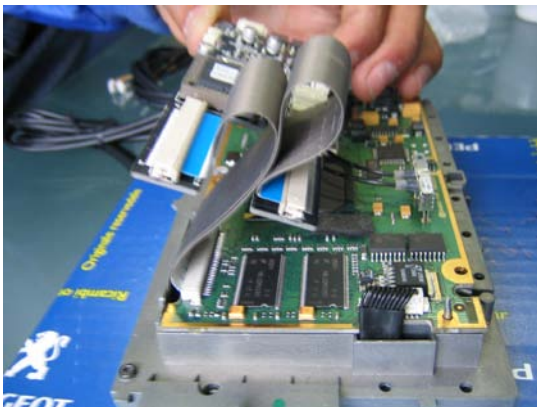
Connect FCC(OUT) to the monitor



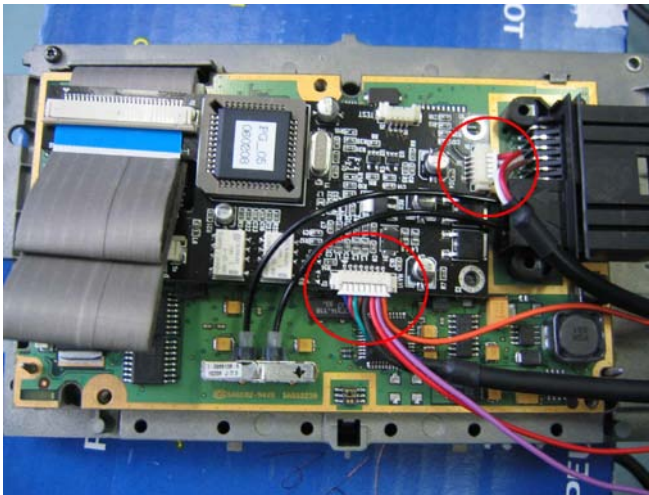
Connect FCC(IN) to the PCB



4) Connect FCC to the Peugeot RGB board



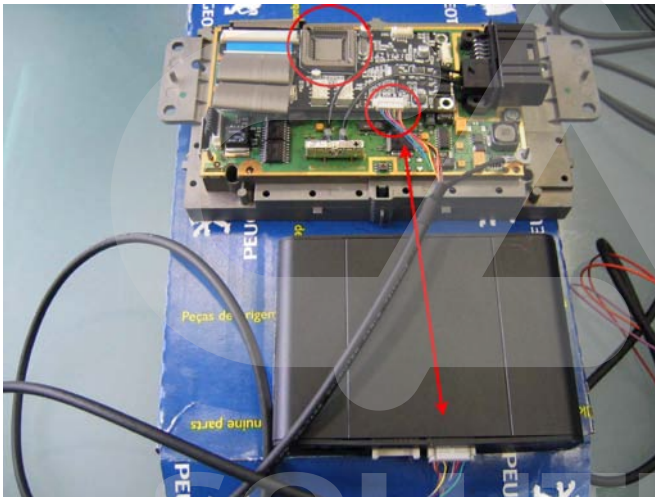
5-A) Type A. Connect IR,RGB wire to the Board



IR,RGB ;

Connect to the board

5-B) Type B. Connect IR,RGB wire to the Board



RGB ; Connect to between
CVBS and Peugeot board

IR ; Positioned at the CVBS

**When you use Peugeot with CVBS,
You must remove Micro Chip on the
board.**

IR ; Positioned at the CVBS

When you use Peugeot with CVBS, You must remove
Micro Chip on the board.

6) Wire PassageWay



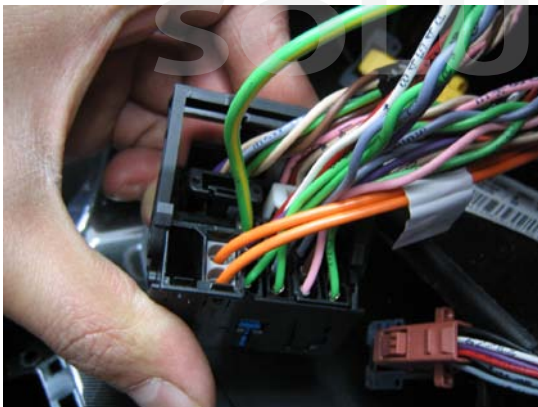
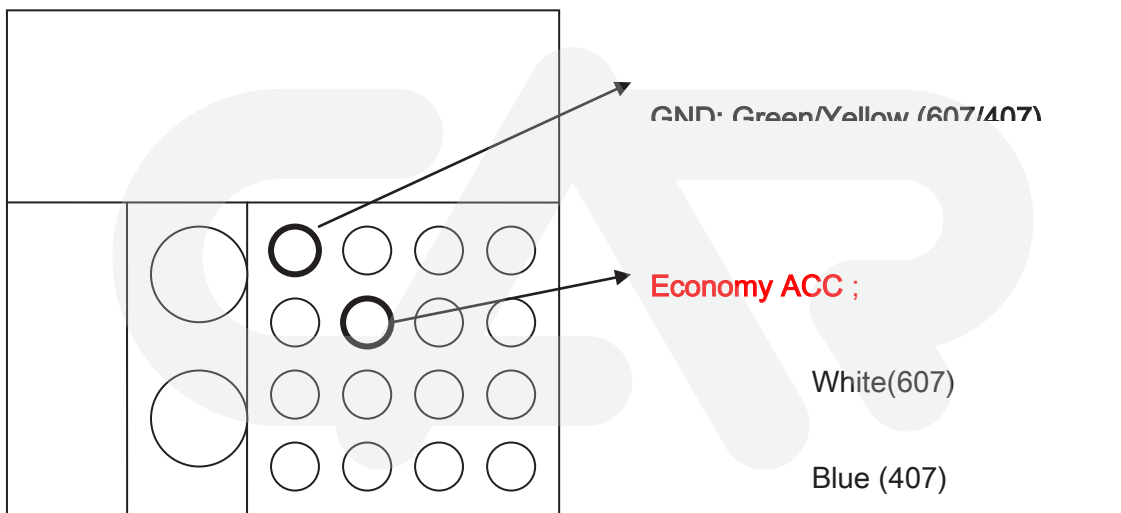
You should be make a hole





5) Finding ACC & GND

You can find it out which is located at the behind of Radio.



ACC ;



You can find it out which is ACC under the steering wheel.

Brown; 607

Gray; 407

You must be hook up the Fuse (15A) at the ACC for safety.

