

Instruction Manual

CarPlay Integration for BMW with NBT System

Content:

● Warning	3
● Compatibility	5
● Features	6
● Package Components	7
● Connection Diagram	8
● DIP Setting	10
● Operation Instruction	11
■ How to switch from original to add-on interface	11
■ Apple CarPlay	12
■ Android Auto	13
■ Mirroring	14
■ USB Multimedia Playback	14

Warning:

- In order to protect the driving safety and avoid break the traffic law; please DO NOT operate the interface while driving.
- The reversing surveillance function just is used in reversing assistance. Please check the entire surroundings while reversing.
- All steps of installation should be done by the well-trained specialist.
- During installation, the ignition key should be taken off and after all installation finished, connect power cable last.
- Please DO NOT plug or pull the connected cables in the state of power-on, in order to avoid damaged monitor or accessory.
- Install wiring in a manner in which cables will not come in contact with metal parts. The wiring may be damaged by contact with metal parts, resulting in fire and shocks. Avoid all contact with hot surfaces when wiring the main unit. High temperatures may damage wiring, causing shorts, arcing and fires.
- Please DO NOT put the product in the damp environment or water, in order to avoid electric shock, damaged and fire accident caused by a short circuit.
- Kindly check all components are in the box when receiving the product. If anything missing, inform to the supplier/manufacturer.
- Start the engine before loading, check the interface whether have function displayed, key control whether correct, the vehicle

interface whether having a scratch. Please give the feedback to the supplier/manufacturer if there have any questions.

- Please note that put the disassembled automotive components in a good way on the installation process, avoid scratching the instrument panel, the leftovers of connecting cables need to handle and DO NOT leave it in the car. The connecting plug must be insulated in order to short circuit.
- The cables should be connected in a good way, the vehicle installation space is a little small, so reduce space usage as far as possible. There should be a good plan about connect cables, avoid affecting the active component of connecting, such as control components of turning the steering wheel, throttle and brake pedal. There need to be fastened after connecting cables in case of a drop.

Car-Solutions.com

Compatibility:

Brands	Series	Years	Original System
BMW	1 Series (F20)	2013 - 2017	<p>NBT system (High-CIC) with 6.5/8.8/10.25 inch monitor 6 Pin LVDS connector</p>  
	3 Series (F30, F31)		
	4 Series (F32)		
	5 Series (F10, F11)		
	6 Series (F12)		
	7 Series (F01, F02)		
	X1 (E84)		
	X3 (F25)		
	X4 (F26)		
	X5 (F15)		
X6 (F16)			
Mini	Cooper	2013-2015	

NOTE! BMW X1, X3, X4 with 8.8" monitor DO NOT support aftermarket rear view camera connection.

NOT available for BMW 1 series (2017) with 8.8 inch monitor.

Features:

- Integrated 3 in 1 module supports Apple CarPlay, Android Auto, and screen mirroring functions
- Supports USB HD video and lossless music playback (APE, WAV, FLAC, MP3, WMA, etc.)
- Offers 2 CVBS video-in for front/rear view camera (NTSC only)
- Support PDC (Parking Distance Control) and FPG (Flexible Parking Guidelines)
- Supply 12V power to the backup camera
- Long press “**MENU**” button to display front view (DVR)
- VGA input for specific 360 panoramic system, offers a clearer picture
- Operate by OEM iDrive controller & steering wheel buttons
- Support further software update by TF card



Apple CarPlay



Android Auto



Mirroring



USB multimedia



FPG



PDC



2*CVBS in



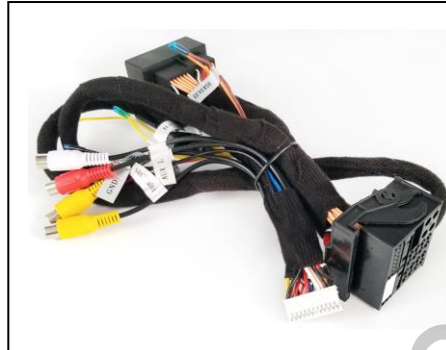
Software update

Package Components:



Main Unit

Dimension: 143*102*26 mm



Quadlock Main Power Cable



6 Pin LVDS Cable



USB/MIC Cable

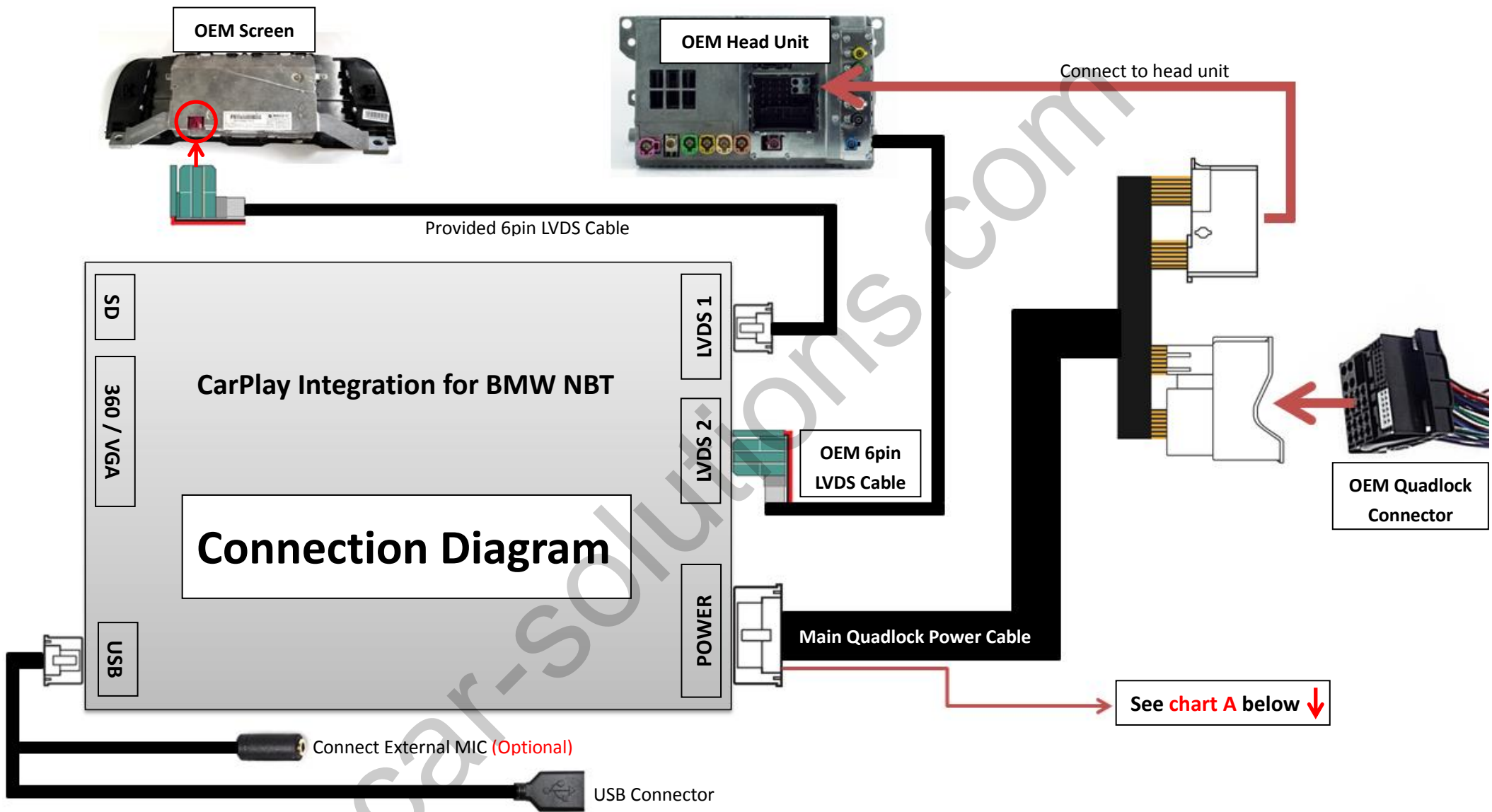
Optional Components:



External Microphone
(Needed when a car **without OEM MIC**)



RCA to AUX Cable
(Needed when OEM Quadlock connector with **MOST Fiber Optic**)



How to connect when the head unit with MOST Fiber Optic

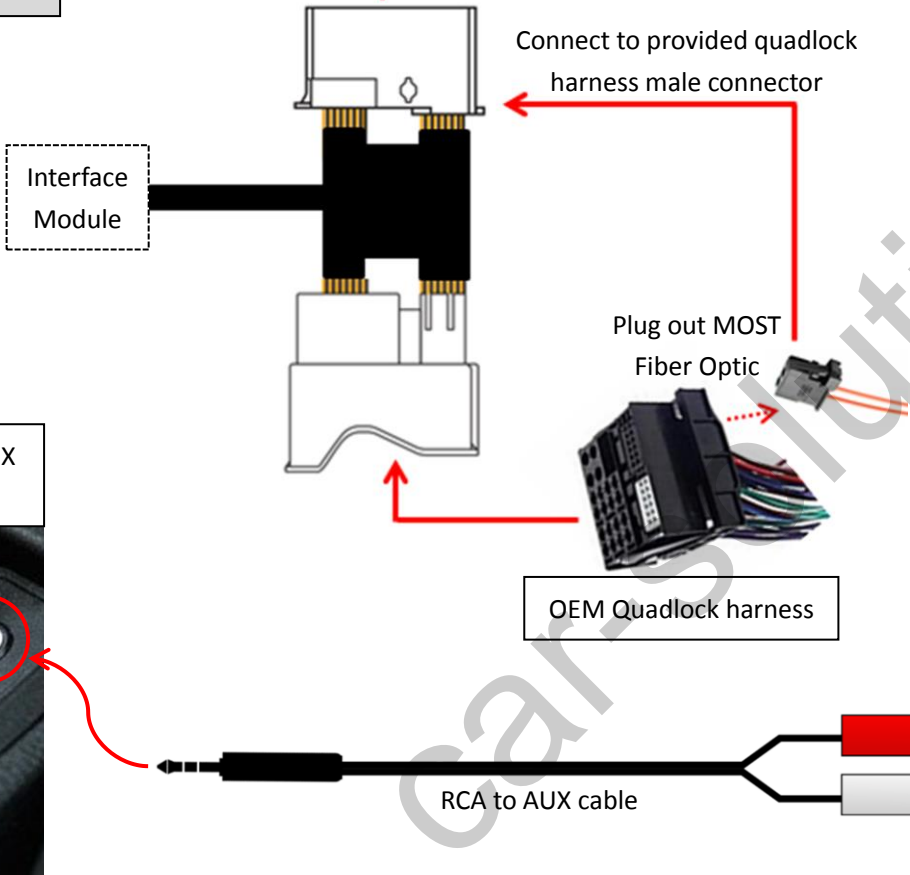
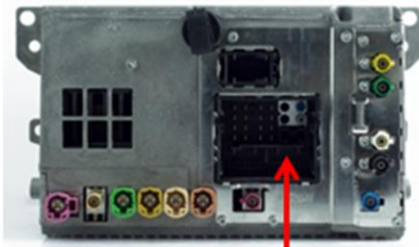


Chart A: ↓

	ACC_OUT	Supply power for DVR or other video devices. Just connect the ACC_OUT (RED) when use aftermarket front view camera
	B+	
	GND	
	LEFT_DET	N/A
	RIGHT_DET	N/A
	CAM_POWER	Supply 12V power for backup camera
	REVERSE	Reverse detect (Connect to reverse light if CAM_POWER cable does not output 12V)
	REAR_CVBS	Rear view camera (NTSC) video input
	FRONT_CVBS	Front view camera/DVR (NTSC) video input
	AUX R OUT	Audio L&R output (Connect to "RCA- AUX cable" only when OEM Quadlock connector with MOST Fiber Optic)
	AUX L OUT	

DIP Setting:



PIN	ON ↓	OFF ↑
1	Disable Dynamic Parking Guideline	Enable Dynamic Parking Guideline
2	Disable 360 Panoramic	Enable 360 Panoramic
3	Selection of car model	
4		
5		
6	—	
7	Original Rear View Camera	Aftermarket Rear View Camera
8	External Microphone	Original Microphone

3	4	5	Car Models
ON ↓	OFF ↑	ON ↓	2013-2016 1-5 Series/Mini/X3 (6.5 inch) 2016 X1 (6.5 inch)
ON ↓	OFF ↑	OFF ↑	2013-2015 Mini/1-3 Series/X3/X4 (8.8 inch) 2013-2016 X5/X6/5 Series (10.25 inch) 2013-2015 7 Series (10.25 inch)
ON ↓	ON ↓	OFF ↑	2017 1 Series (6.5 inch)



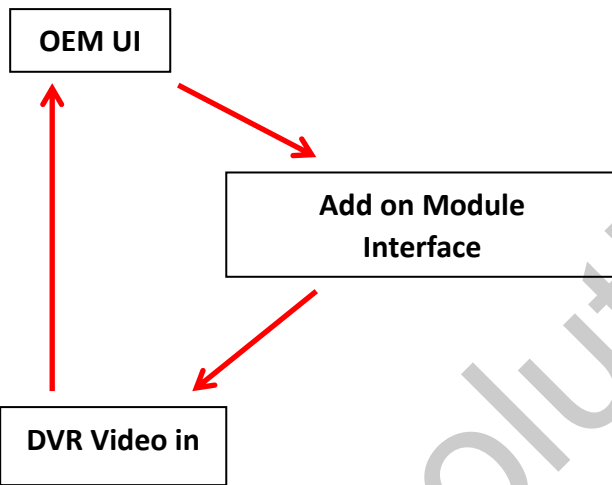
NOTE! Please reboot the interface for effective after changing any DIP setting.

Operation Instruction:

- How to switch from Original to Add-on interface



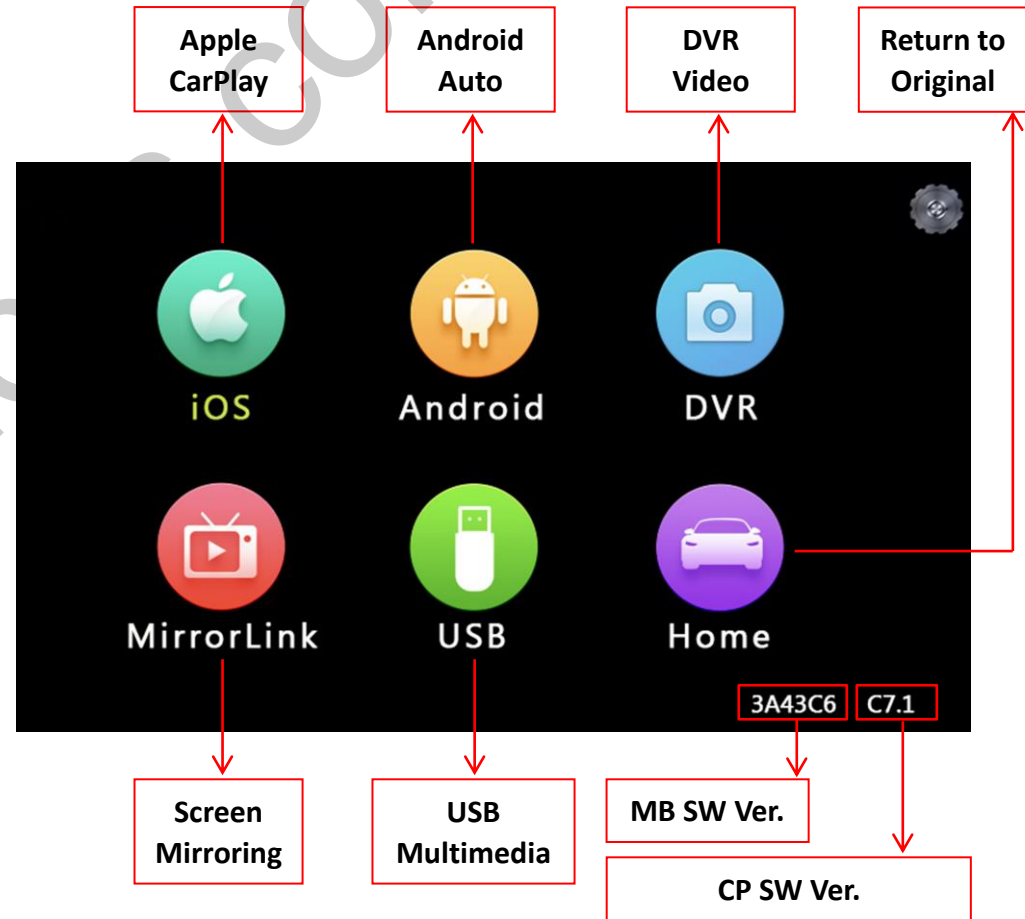
Order: OEM - Add on - DVR - OEM



NOTE! It will skip DVR picture if not CVBS video signal input

It will switch to add on module UI automatically when a phone/USB stick connected.

Add on module UI:

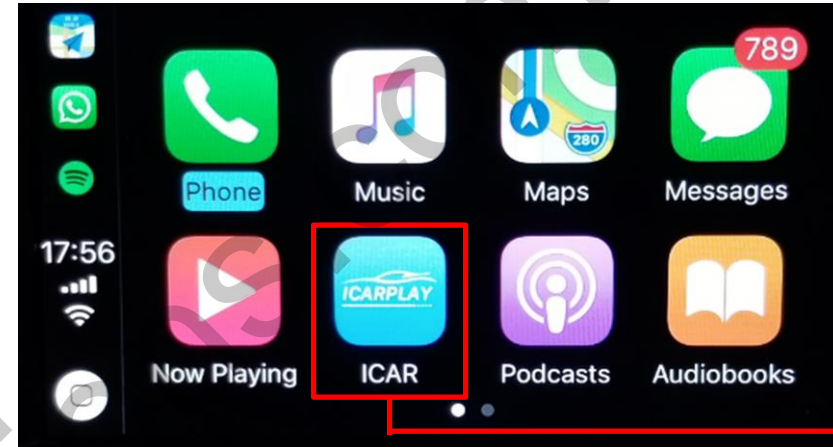


Original Audio Setting:



NOTE! Make sure switch to "AUX" mode on original car stereo before use the CarPlay integration.

• Apple CarPlay



Return to add-on module UI



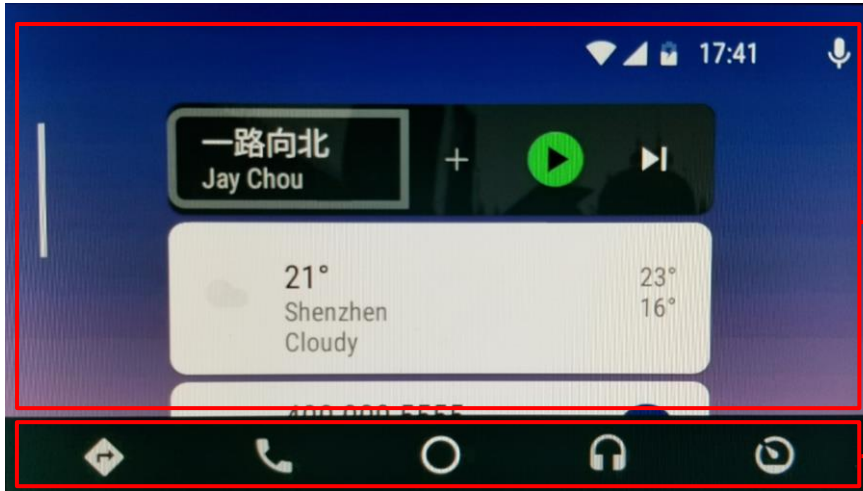
MENU: Click as home button; long press for switch mode: OEM-Add on-DVR-OEM.

TEL: Normally, click for activating Siri; Click for answer when calling incoming.

BACK: Return to the previous step.

NOTE! Disconnect the Bluetooth connection between the phone and car stereo when using Apple CarPlay.

- **Android Auto**



A area

B area

NOTE!

- Make sure smartphone connect to original car stereo Bluetooth for phone call audio delivering when using Android Auto.
- NOT available for activating **Google Assistant** with factory buttons, please use voice command "**OK Google**" instead.



①: Menu-pointer switch to **A area**

②: Menu-pointer switch to **B area**

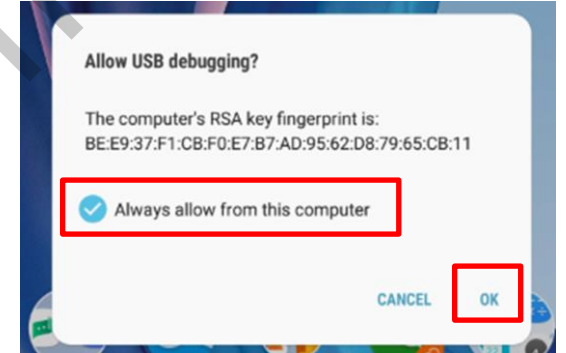
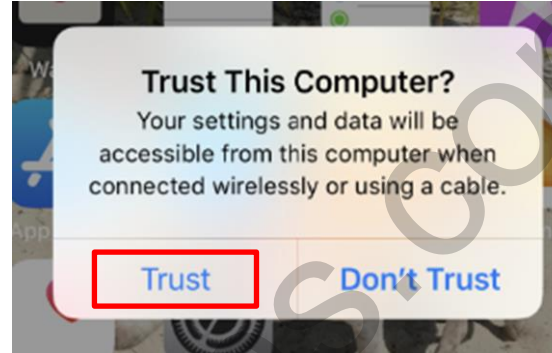
③: Turn the dial to move menu-pointer

BACK: Return to the previous step.

● Mirroring



Connect Android smartphone/iPhone with USB cable, and then enter “MirrorLink” for screen mirroring.



NOTE!

- Please always **trust or allow** when display a popup notification
- Enabling “USB Debugging” on an Android device
- Android device must connect to car stereo BT for all audio delivering

● USB Multimedia Playback



Connect a USB memory stick, enter “USB” icon for playing multimedia: Music, Picture, and Video.