

1. Features

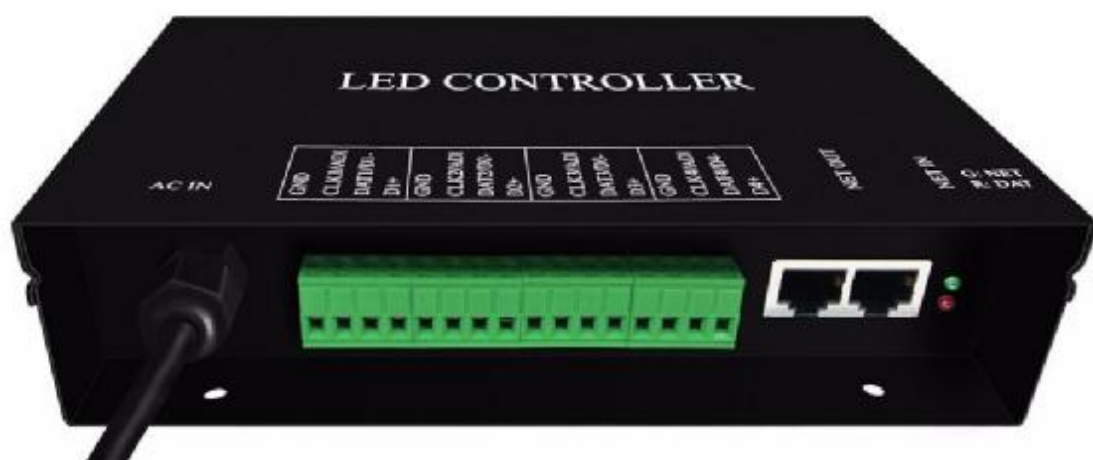
- (1). Four ports control maximum 4096 pixels (for example WS2812). But for DMX512, each port outputs 512 channels.
- (2). Support ArtNet protocol, 4 universes(each 512 channels) output when H802RA works with Madrix.
- (3). Allocate address for DMX512 chips (for example UCS512, TM512)
- (4). Controlled by master controller or PC.
- (5). Transmission distance between two controllers is up to 100 meters.

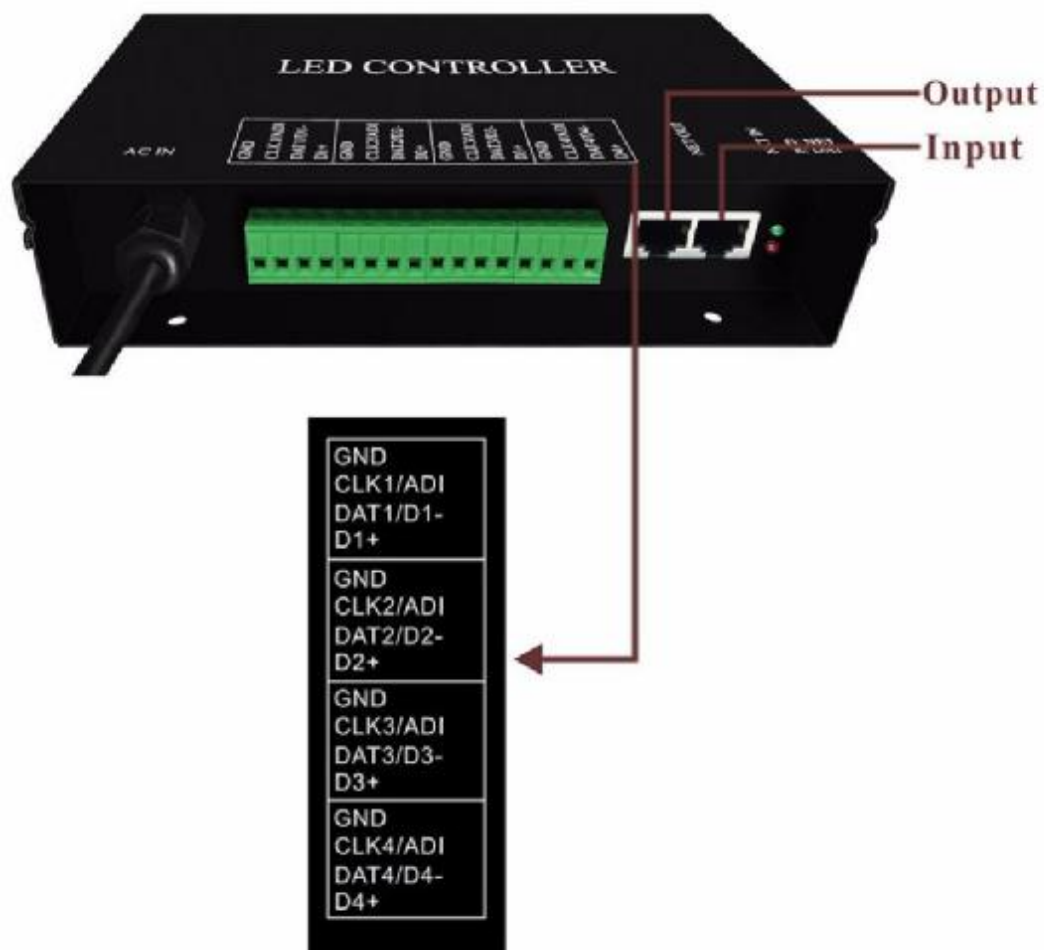
2. Supported Driver Chips

DMX512, HDMX, LPD6803, LPD8806, LPD1882, LPD1889, LPD1883, LPD1886, TM1812, TM1809, TM1804, TM1803, TM512, TM1926, TM1913, TM1914, TM1814, UCS6909, UCS6912, UCS1903, UCS1909, UCS1912, UCS512, UCS8904, APA102, APA104, P9813, WS2801, WS2803, **WS2811**, **WS2812**, WS2821, SM16716, SM16711, INK1003, LX1003, MY9221, MBI6021, MBI6024, LD1510, LD1512, LD1530, LD1532,etc.

Note: H802RA supports more than the chips listed above(for example UCS2903 has the same sequence diagram with UCS1903, H802RA supports them all).

3. Product Display





GND and DAT are for chips like TM1812, WS2811, WS2812.

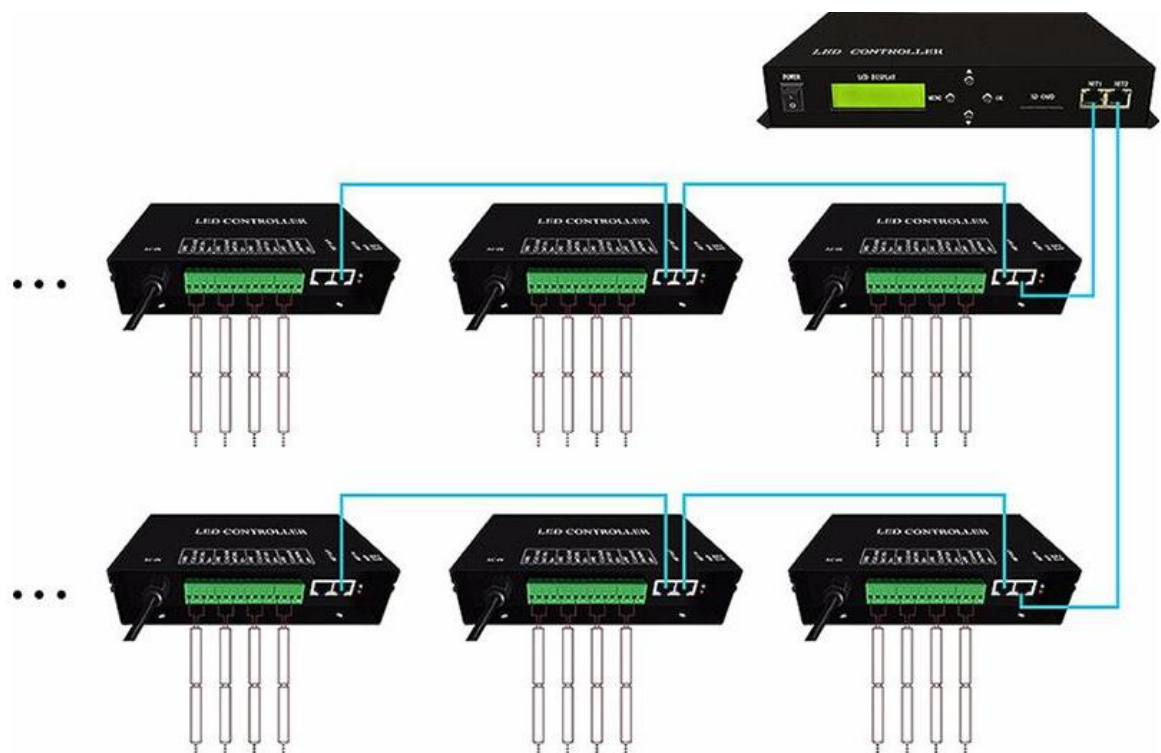
GND, CLK and DAT are for chips like APA102, LPD6803.

GND, D- and D+ are for DMX512 chips like TM512, UCS512.

ADI(address input) is address line for DMX512 chips.

4. Working Mode

(1). Connect to master controller, software is LED Build. Programs are stored in SD card.



LED Build download link:

<https://drive.google.com/open?id=0B1gzqyV6hfOgN2pkMV8yMFozYz>

Q

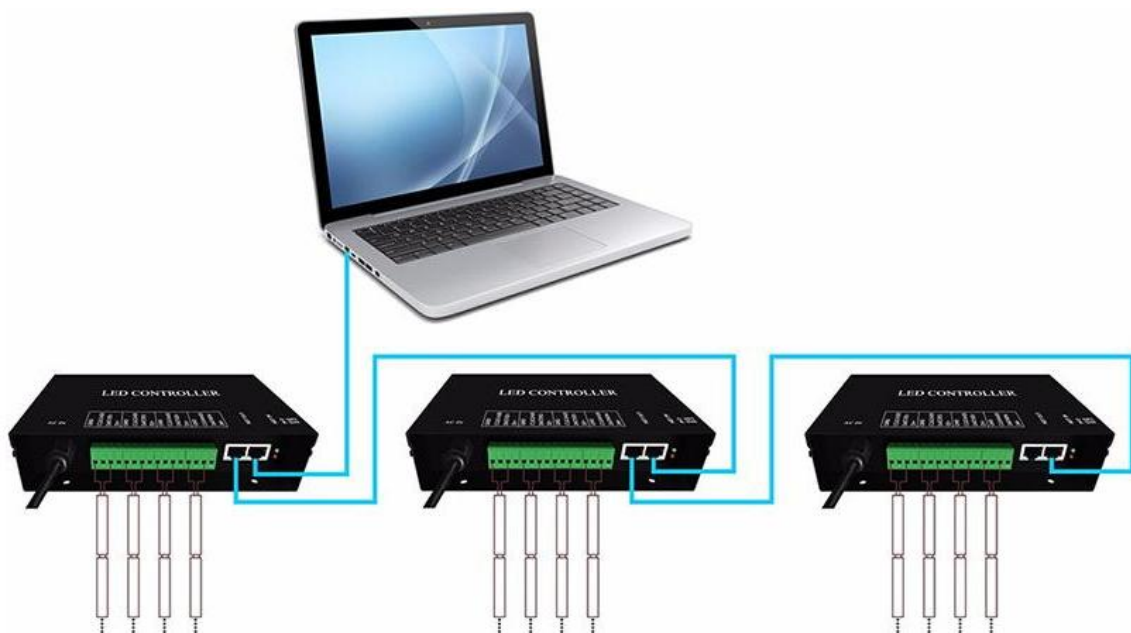
LED Build Tutorial Video:

<https://drive.google.com/open?id=0B1gzqyV6hfOgUnFjeG9EM3VR>

ZjA

(2). Connect to computer, software is LED Studio(our software)

or other software that supports Art-Net protocol.



LED Studio download link:

<https://drive.google.com/open?id=0B1gzqyV6hfOgNEtYT2o0LWd>

DNG8

H802RA to PC manual:

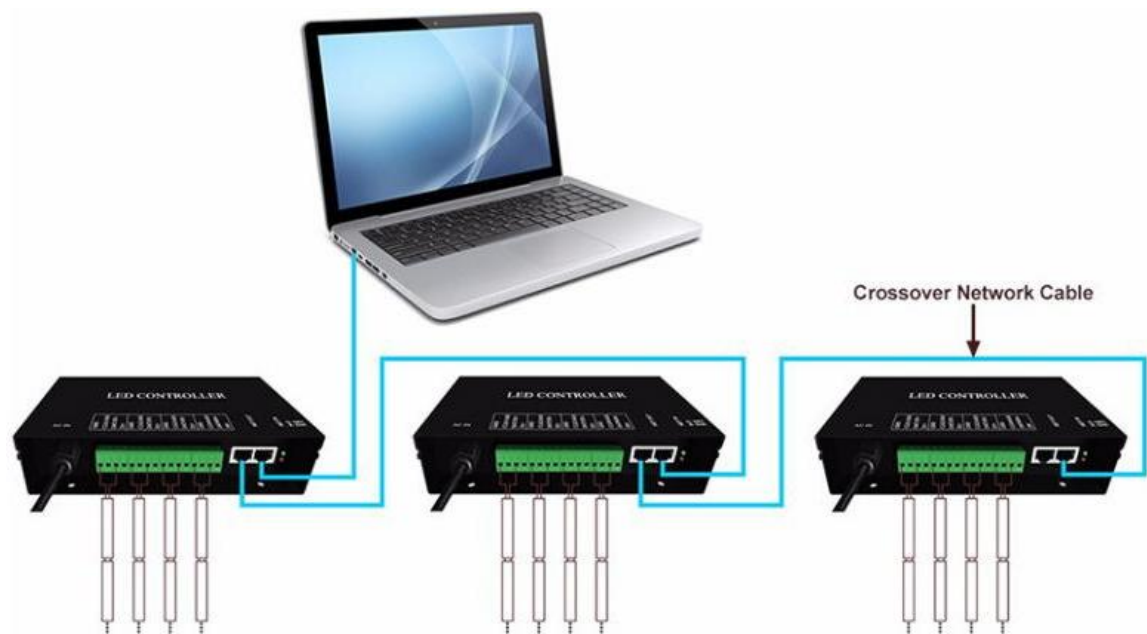
<https://drive.google.com/open?id=0B1gzqyV6hfOgeGI1M2JaYi1U>

RW8

5. Basic Working Procedure for MADRIX

Configurations before MADRIX (if you use other software, these configurations are also essential)

(1). Connect H802RA to PC, allocate an IP address for H802RA.



Control Panel Home

Change adapter settings

Change advanced sharing settings

View your basic network information and set up connections

View your active networks

未识别的网络
Public network

Access type: No network access
Connections: 本地连接

Change your networking settings

- [Set up a new connection or network](#)
Set up a broadband, dial-up, or VPN connection; or set up a router or access point.
- [Troubleshoot problems](#)
Diagnose and repair network problems, or get troubleshooting information.

Control Panel\Network and Internet\Network Connections

Control Panel > Network and Internet > Network Connections

File Edit View Tools Advanced Help

Organize

VPN连接
Disconnected
WAN Miniport (PPTP)

本地连接
未识别的网络
Qualcomm Atheros AR8151 PCI-E...

Control Panel\Network and Internet\Network Connections

Control Panel > Network and Internet > Network Connections

File Edit View Tools Advanced Help

Organize Disable this network device Diagnose this connection Rename this connection View status of this connection

VPN连接
Disconnected
WAN Miniport (PPTP)

本地连接
未识别的网络
Qualcomm Atheros AR8151 PCI-E...

Disable

Status

Diagnose

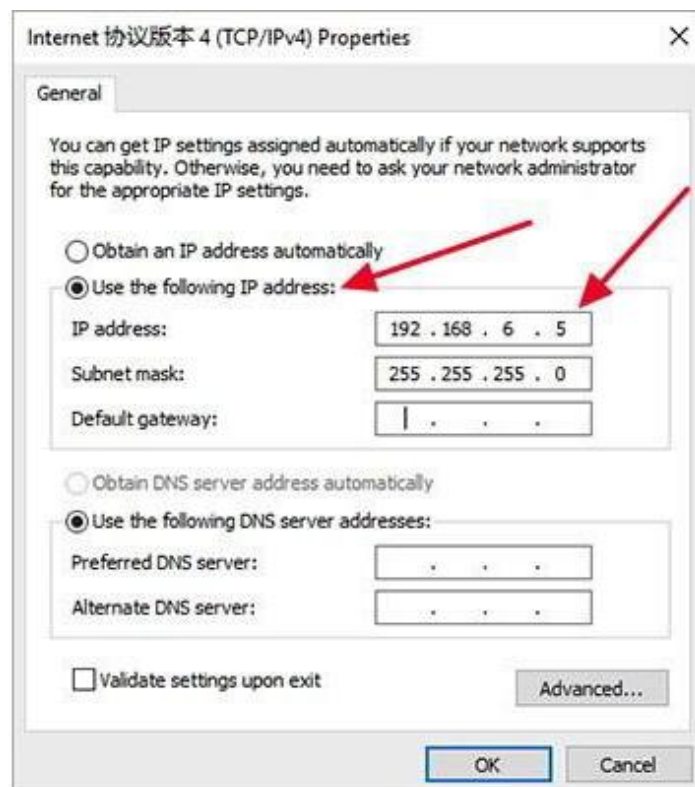
Bridge Connections

Create Shortcut

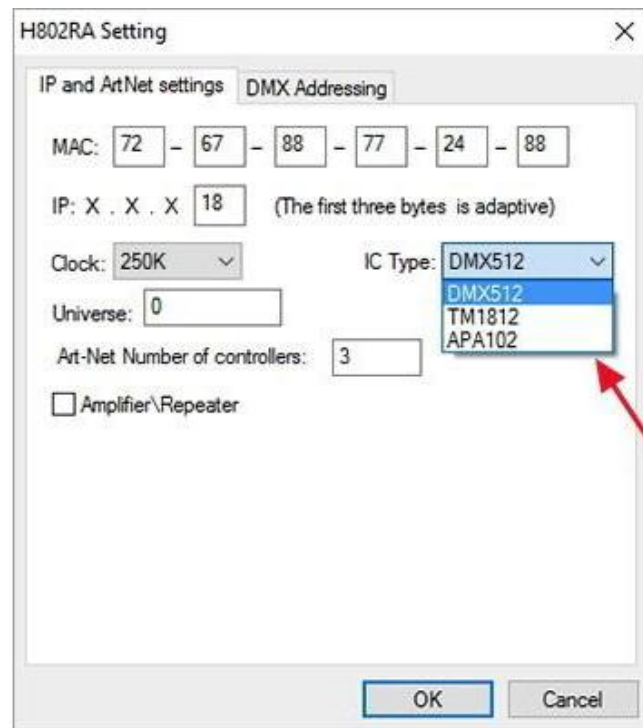
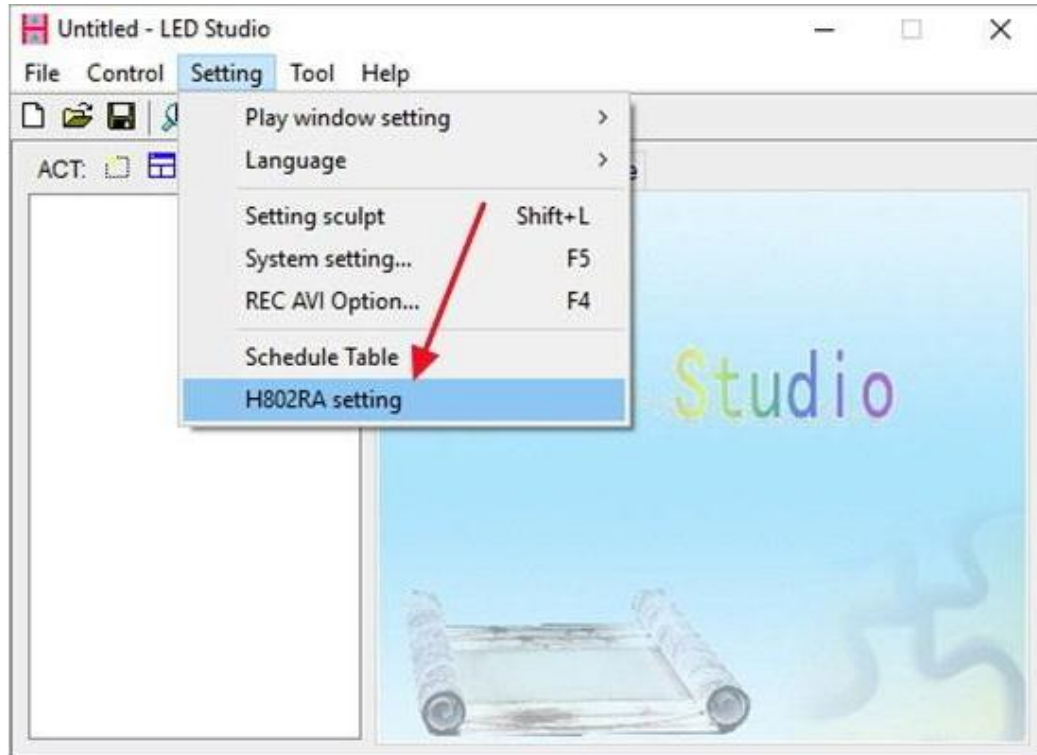
Delete

Rename

Properties

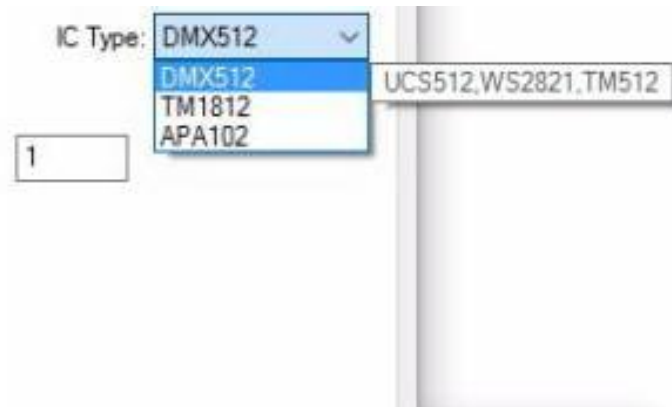


(2). Open LED Studio, click “setting” -- “H802RA setting”, pops up the following dialog box.



Note:

(1). "DMX512" includes UCS512, WS2821, TM512.



(2). "TM1812" includes P9883, TM1804, TM1809, UCS1903, UCS1909, UCS1912, WS2811, WS2812, SM16703, SM16709, SM16712, INK1003, LX1003.



Normally, if you choose "DMX512", Clock should be 250K, if you choose "TM1812", clock should be "750K".

H802RA Setting

IP and ArtNet settings DMX Addressing

MAC: 72 - 67 - 88 - 77 - 24 - 88

IP: X . X . X 18 (The first three bytes is adaptive)

Clock: 250K 250K 500K 750K

IC Type: TM1812

Art-Net Number of controllers: 3

☐ Amplifier/Repeater

OK Cancel

H802RA Setting

IP and ArtNet settings DMX Addressing

MAC: 72 - 67 - 88 - 77 - 24 - 88

IP: X . X . X 18 (The first three bytes is adaptive)

Clock: 250K

IC Type: DMX512 DMX512 TM1812 APA102

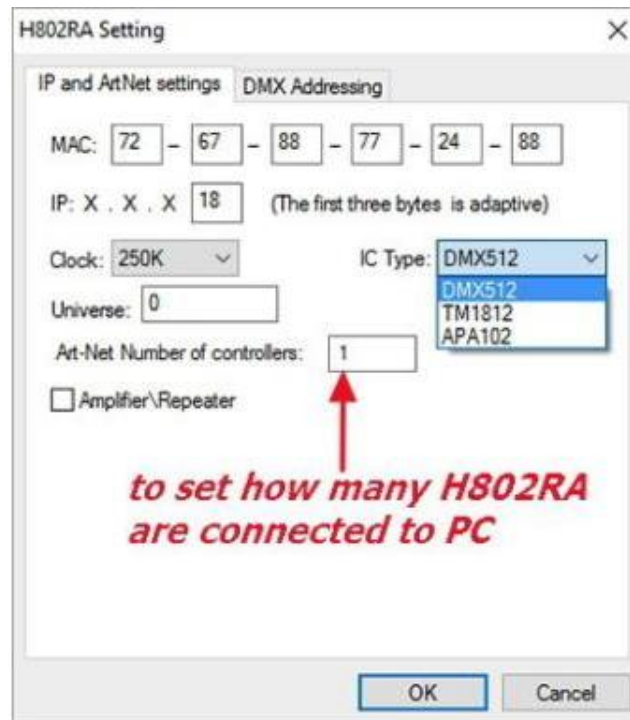
Universe: 0

Art-Net Number of controllers: 3

☐ Amplifier/Repeater

Universe offset, it should be 0

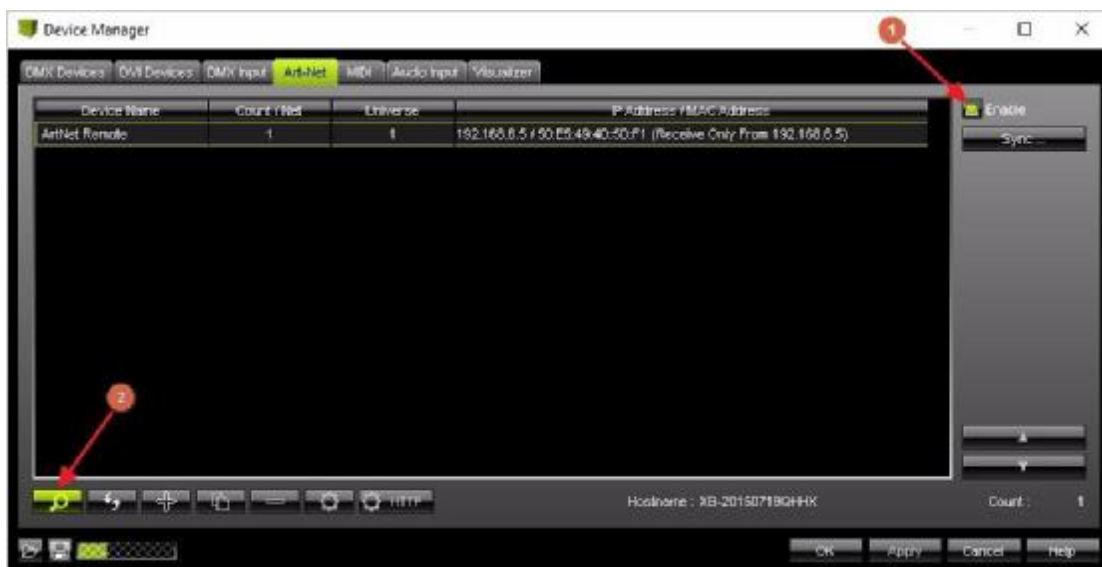
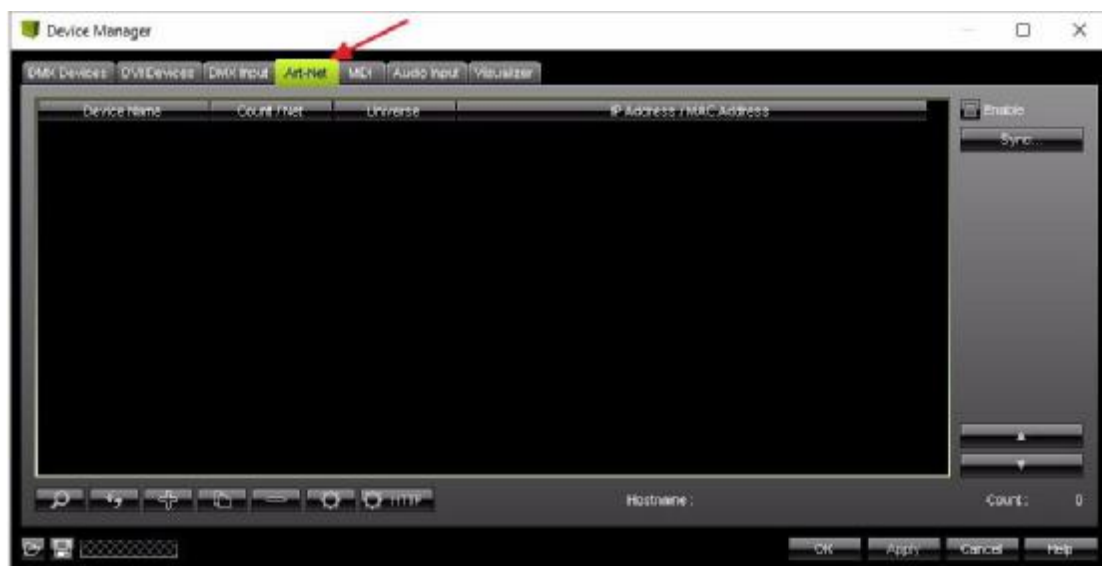
OK Cancel

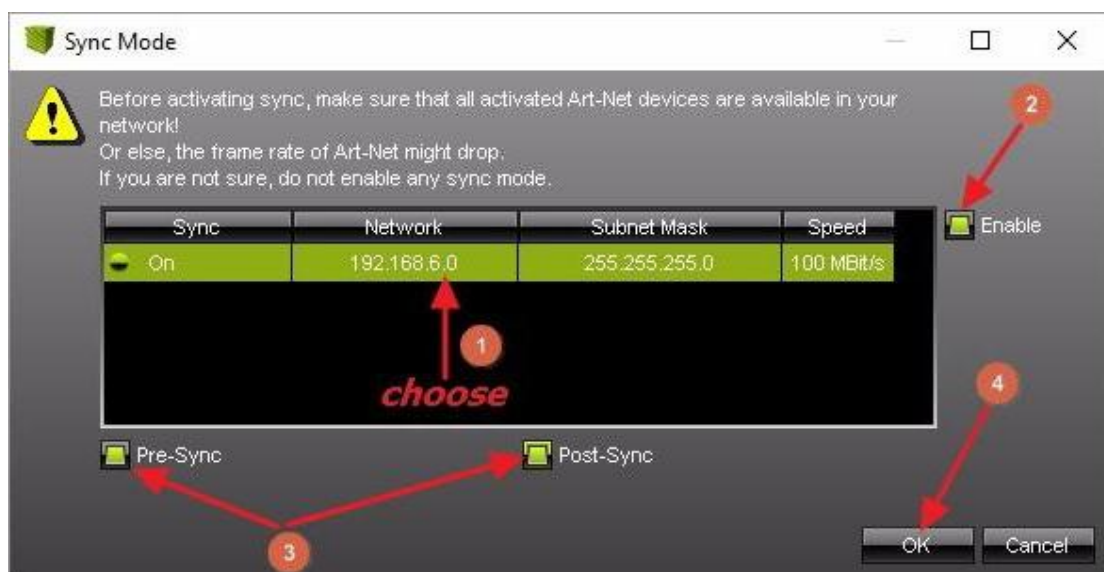
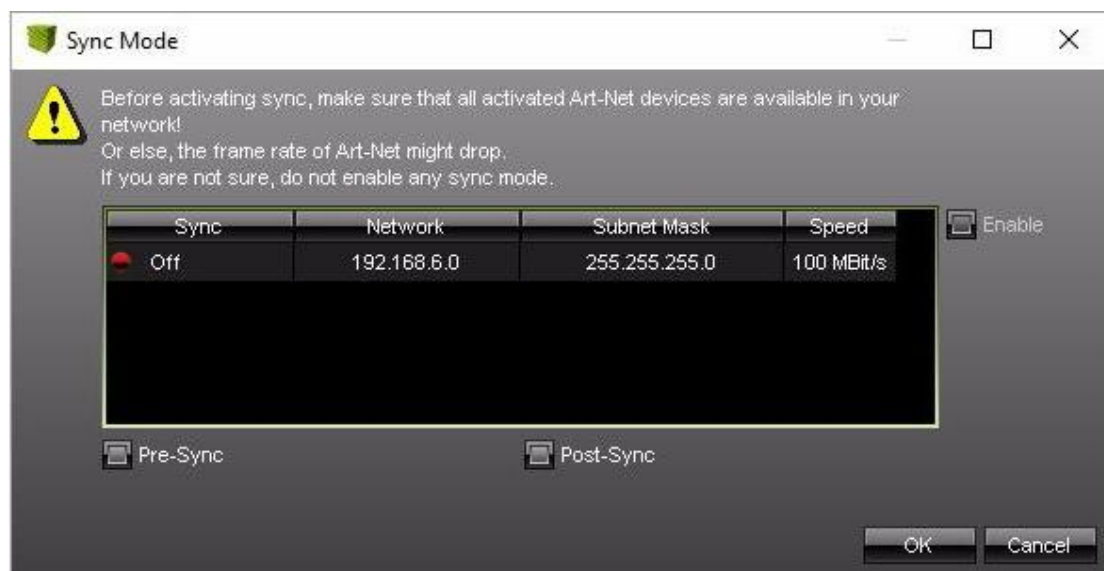


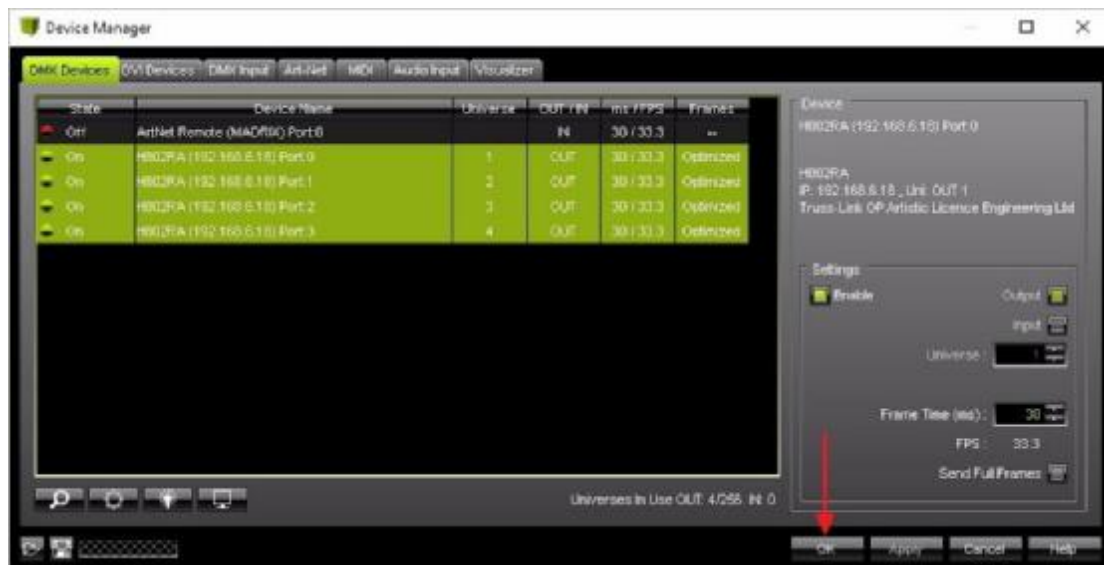
MADRIX Configurations

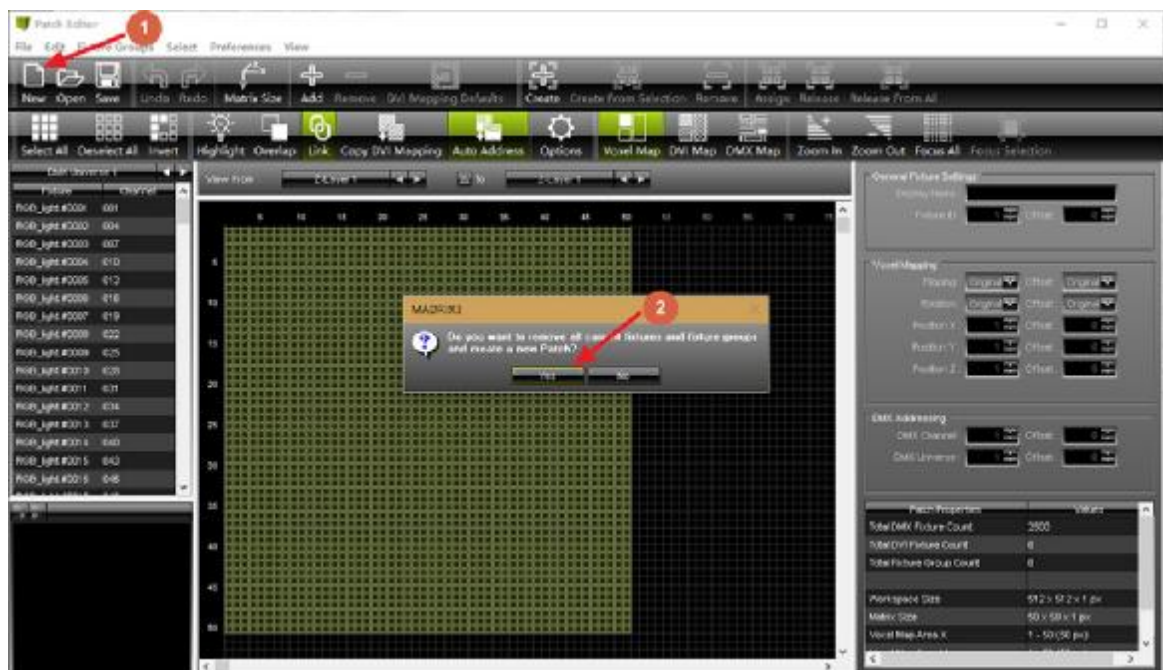
Assume you connect one H802RA to PC, each universe controls
170 WS2812 pixels (1 pixel includes R,G,B, $512/3=170$)













Add Fixtures to universe 1

Add Fixtures

Fixture

Protocol:

Product:

Start Fixture ID:

Placement

Rotation:

Count X / Y / Z:

Offset X / Y / Z:

Start Position X / Y / Z:

☐ Merge Fixtures

Addressing

Start Corner:

Main Orientation:

Snake Mode: ☐

☐ Apply Fixture Rotation

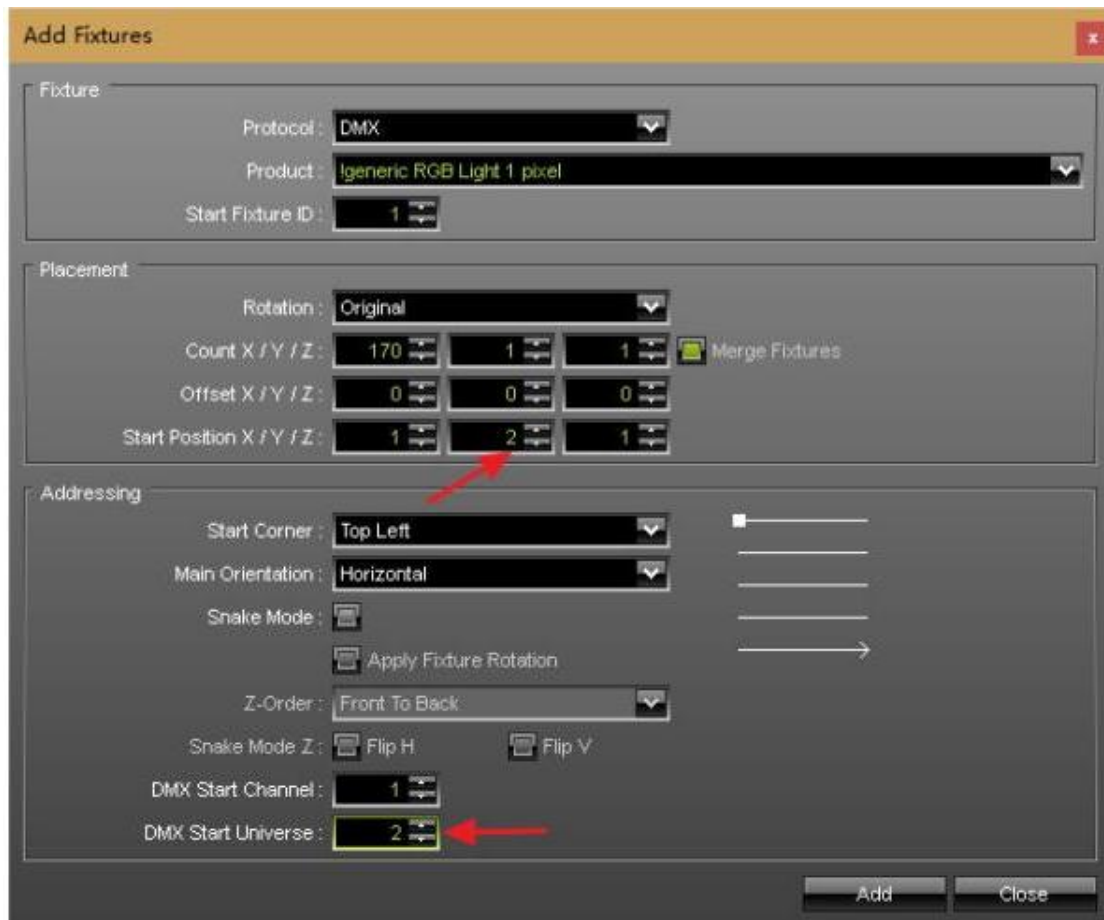
Z-Order:

Snake Mode Z: ☐ Flip H ☐ Flip V

DMX Start Channel:

DMX Start Universe:

Add Fixtures to universe 2



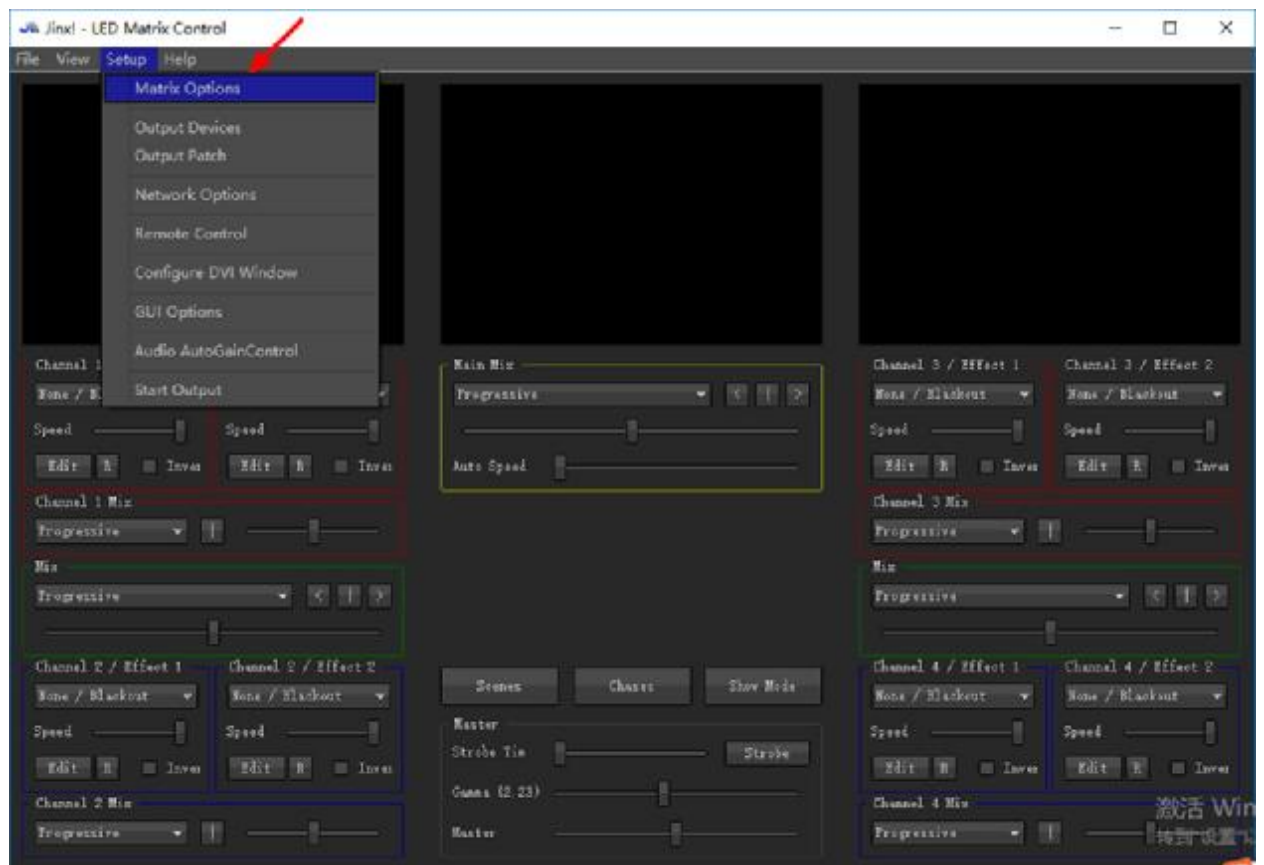
Use the same way to add fixtures for the rest of two universes

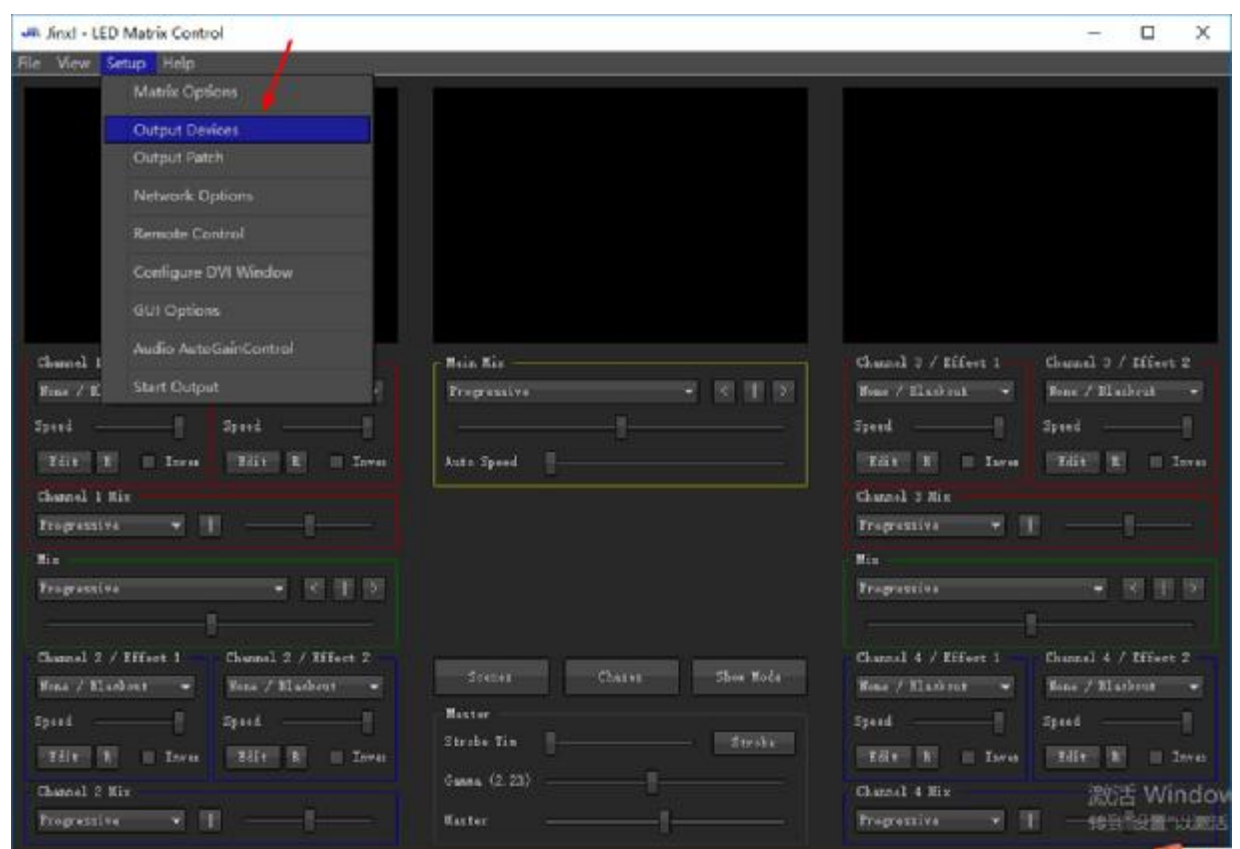
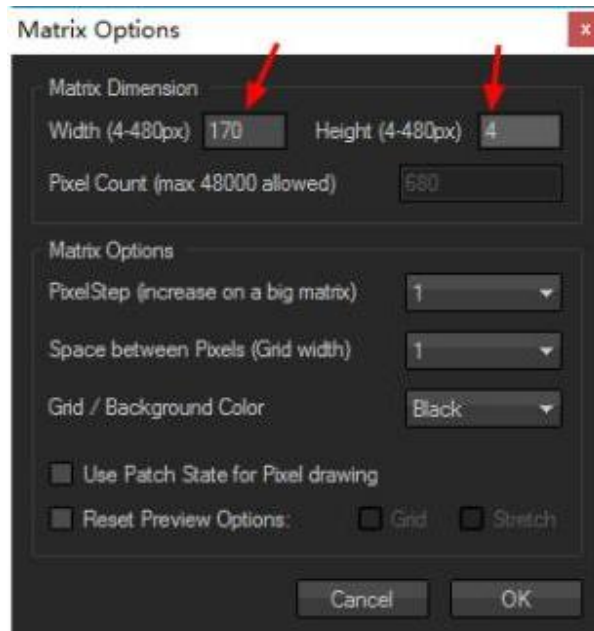


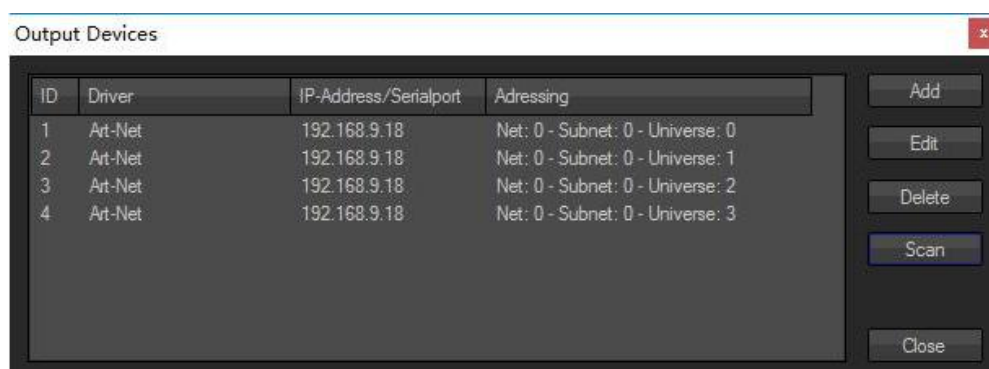
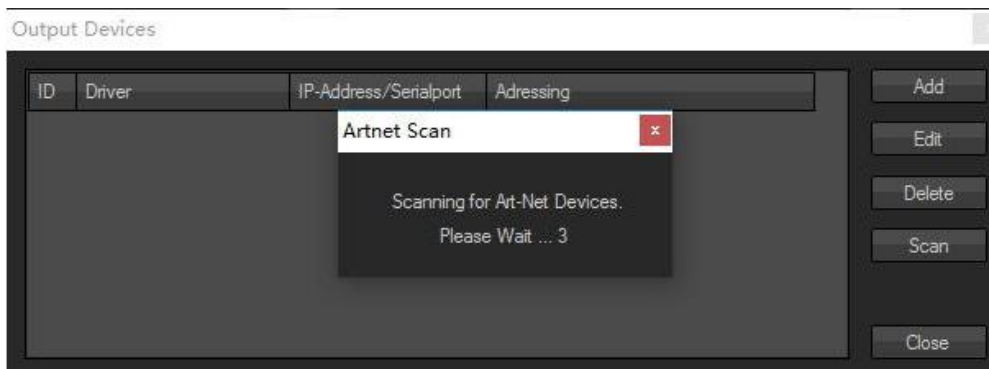
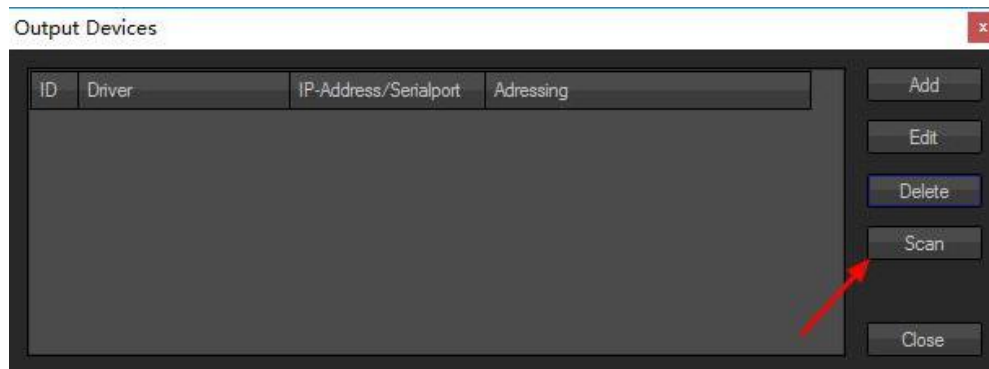
Save patch, then go back to main window, you can control lights with MADRIX!!!

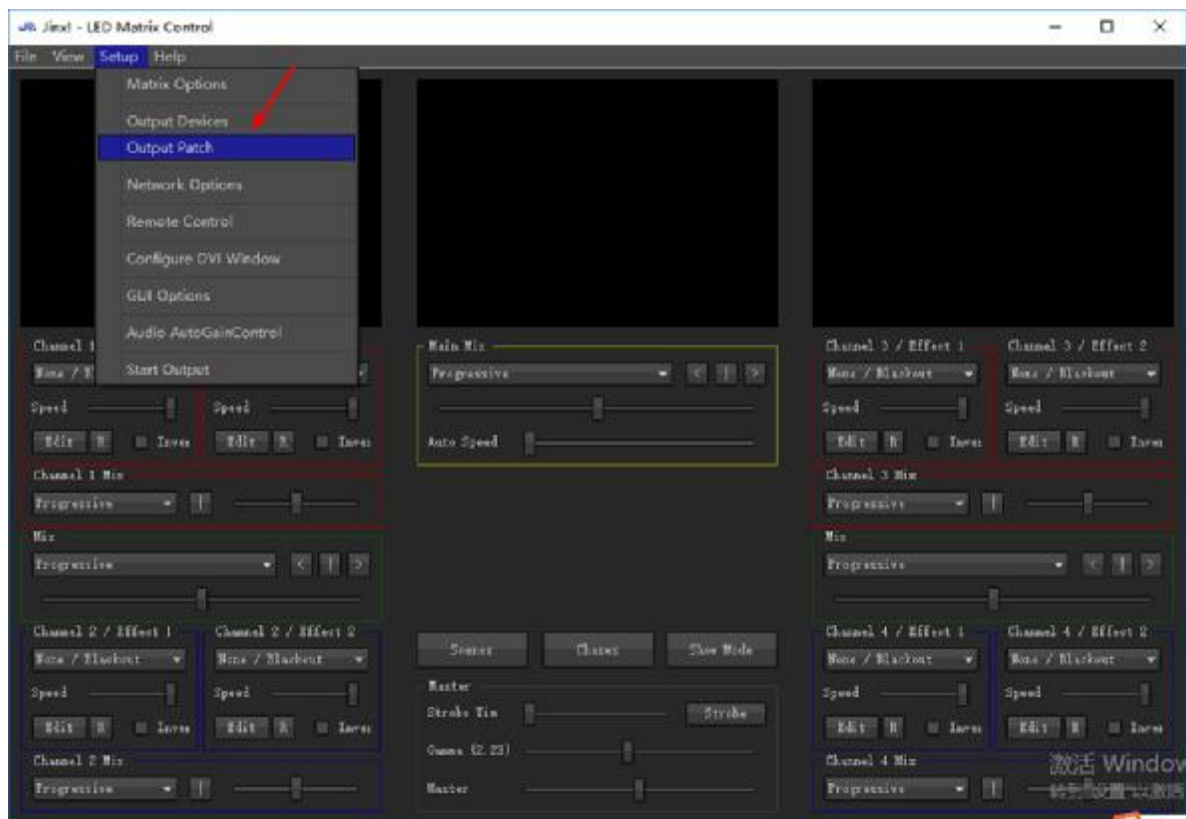
6. Basic Working Procedure for Jinx!

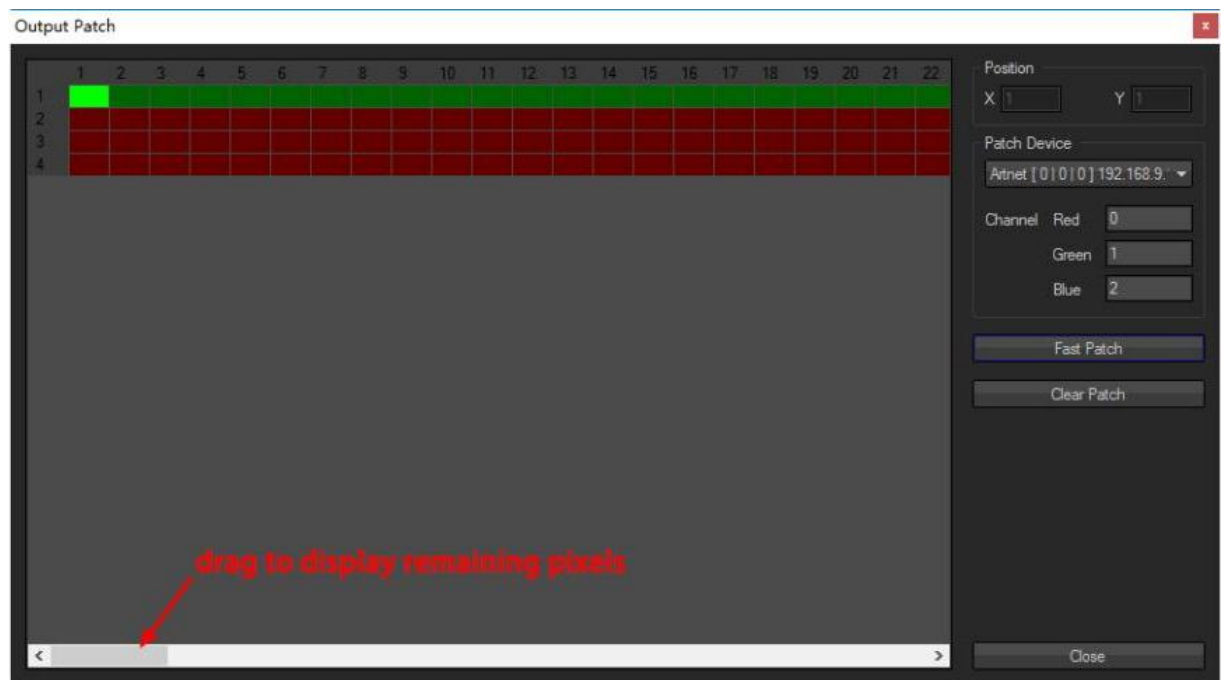
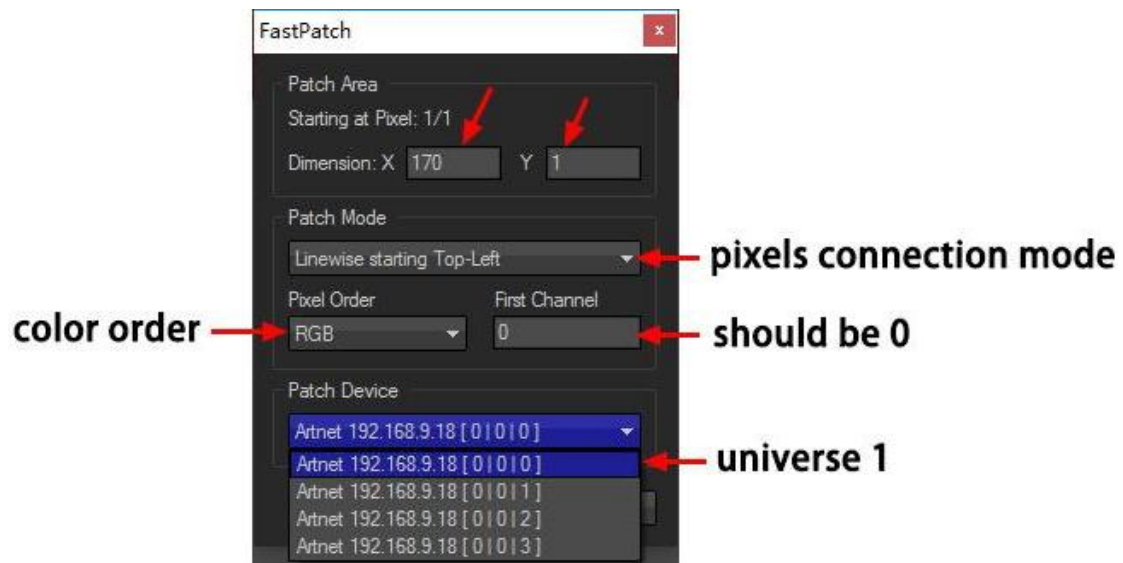
Note: before this, you should allocate an IP address for H802RA and configure H802RA in LED Studio, which has been showed above.

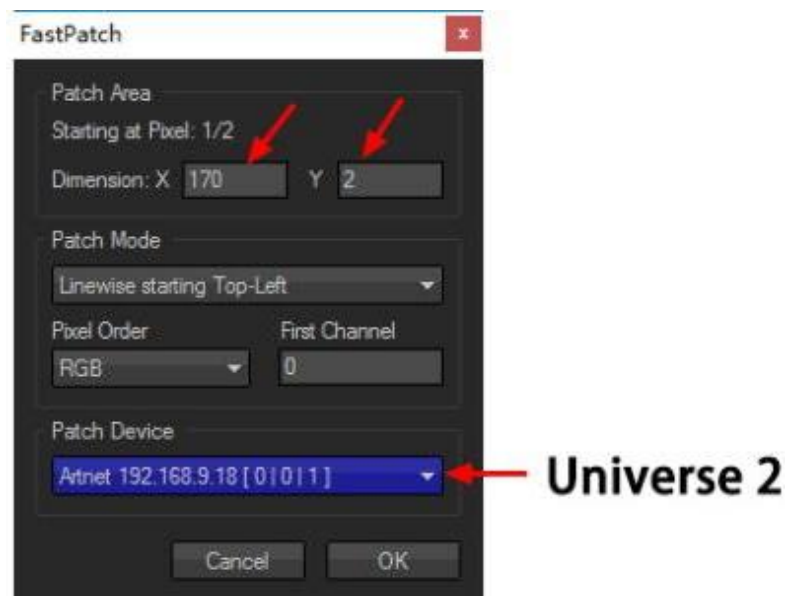
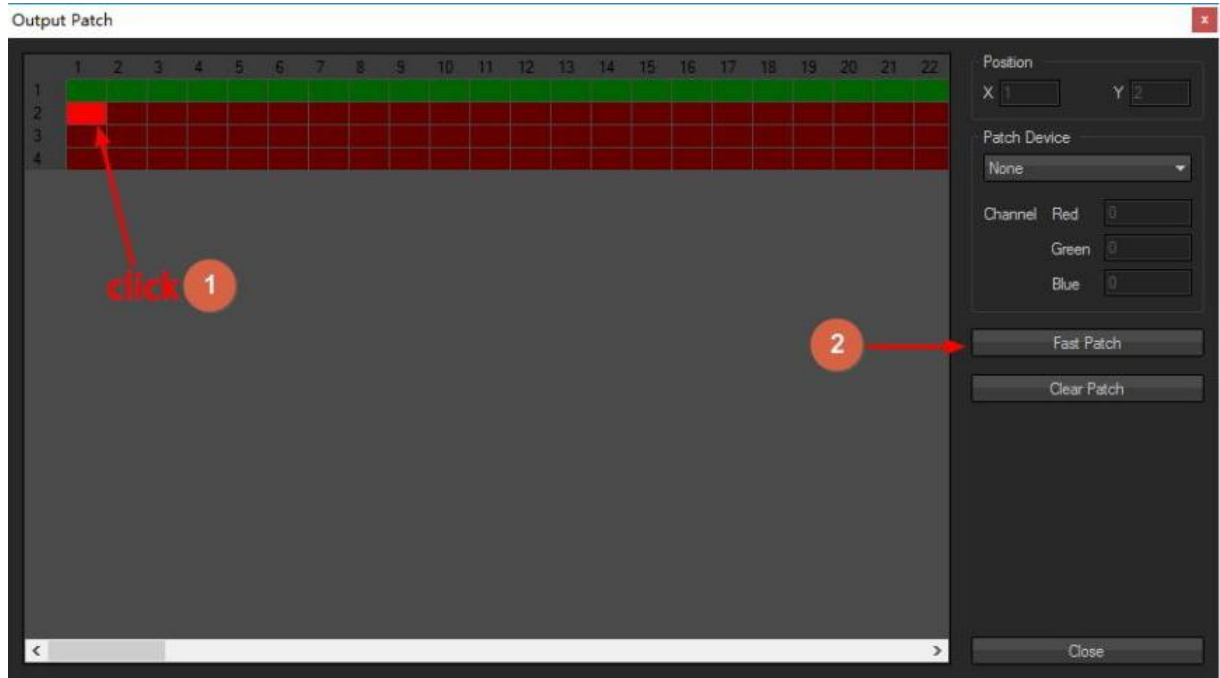


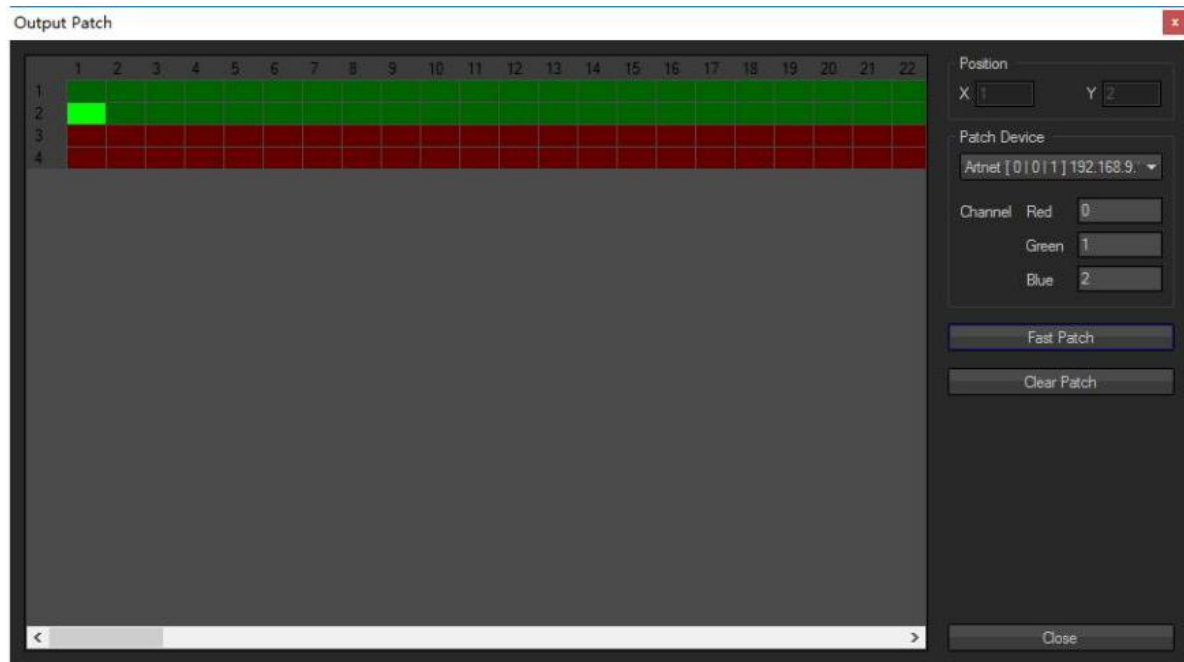




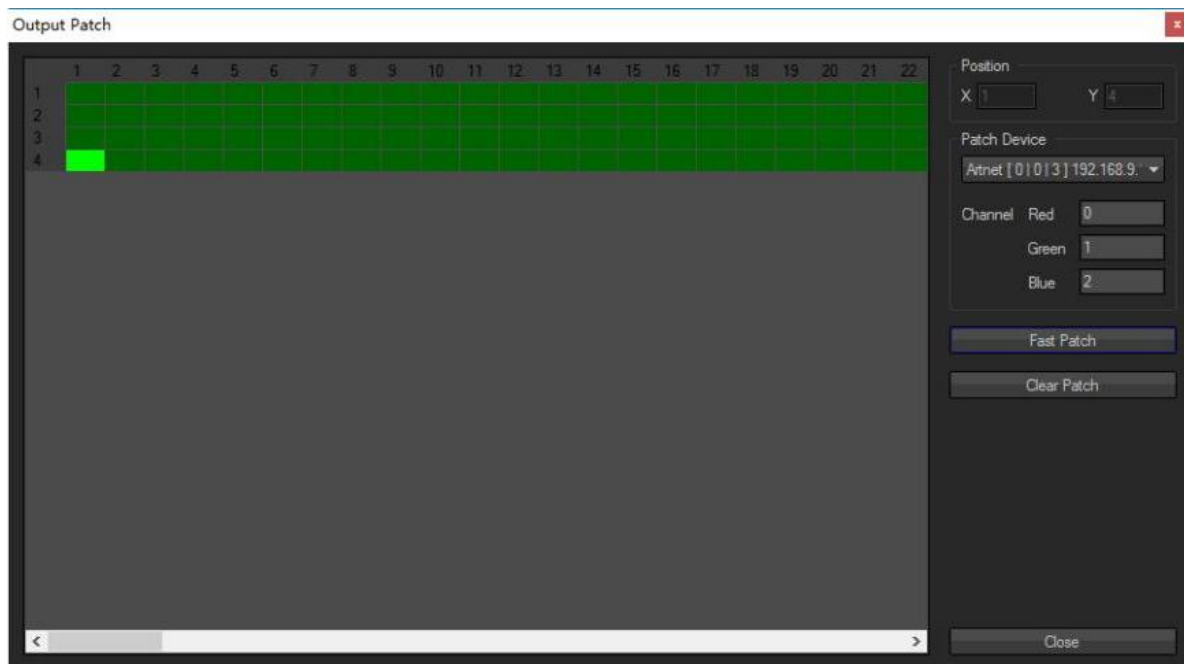




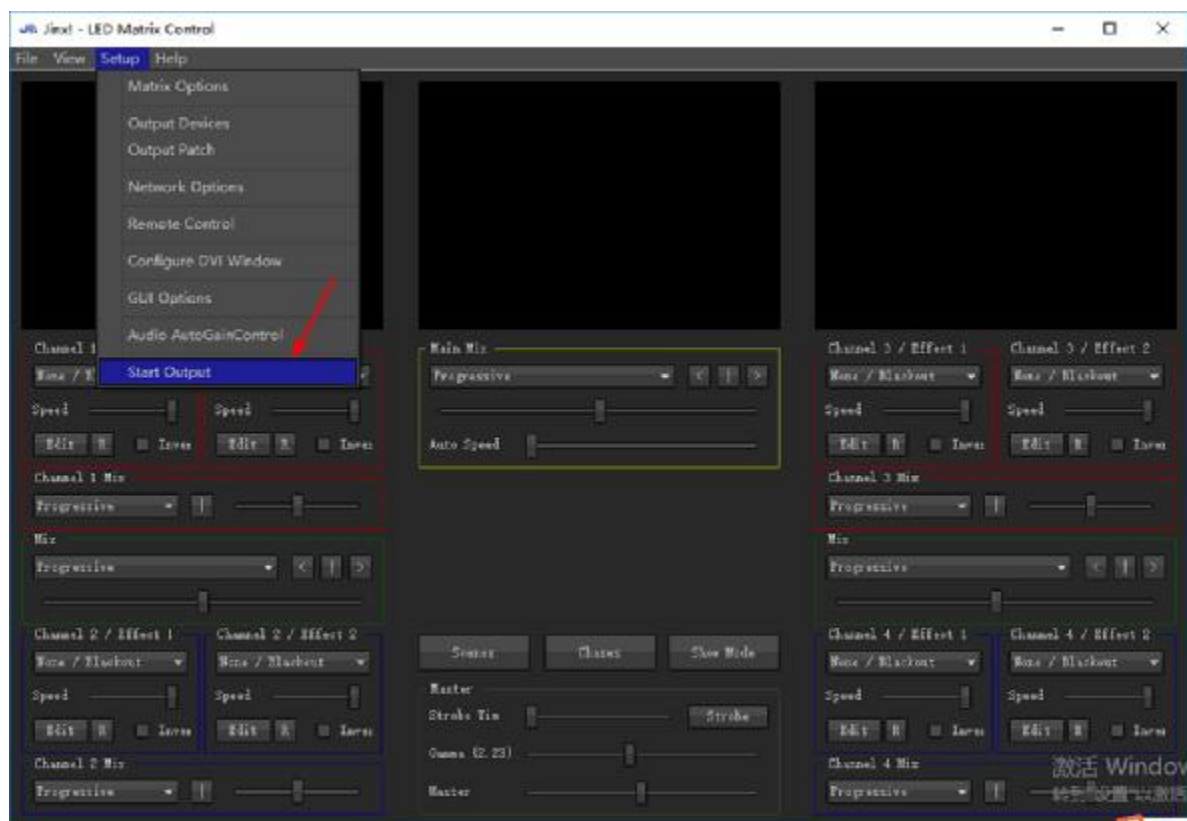




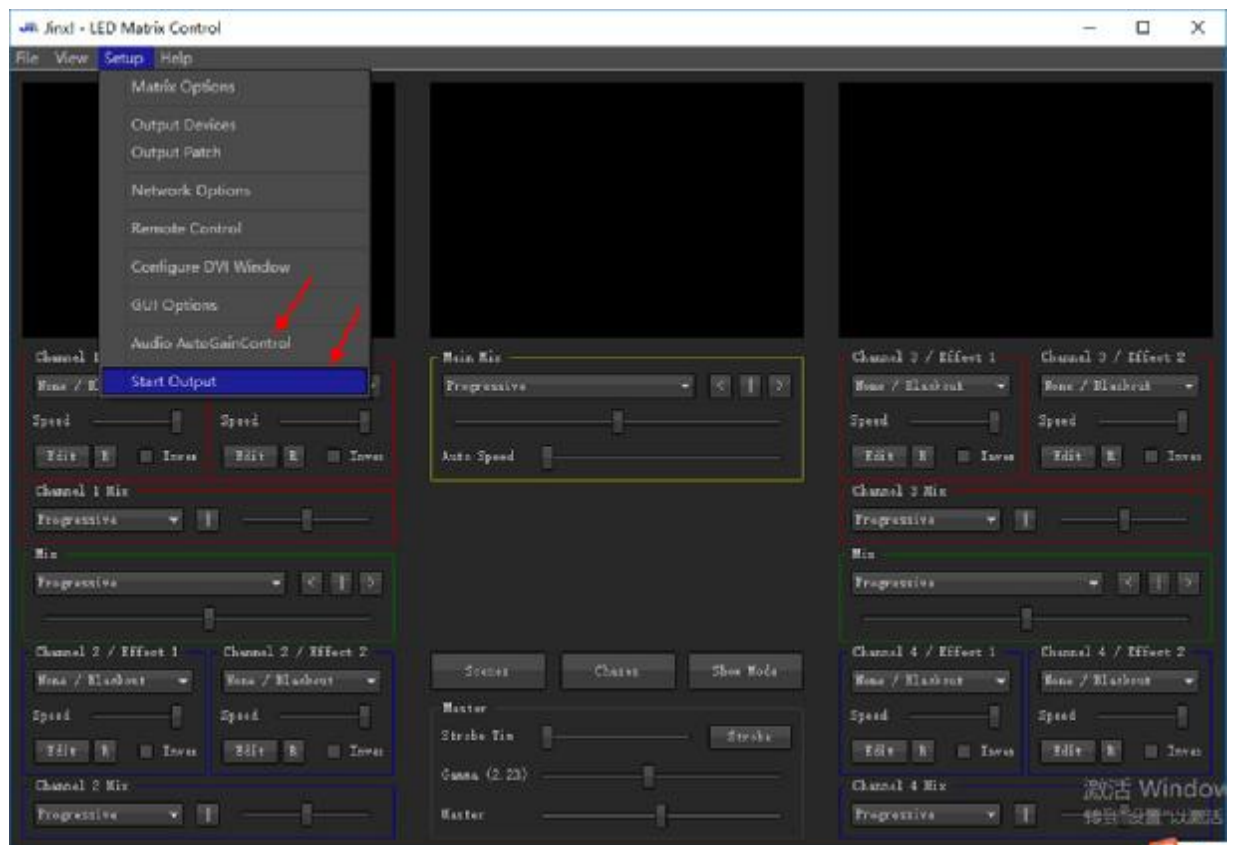
Use the same way to add pixels to the rest of two universes



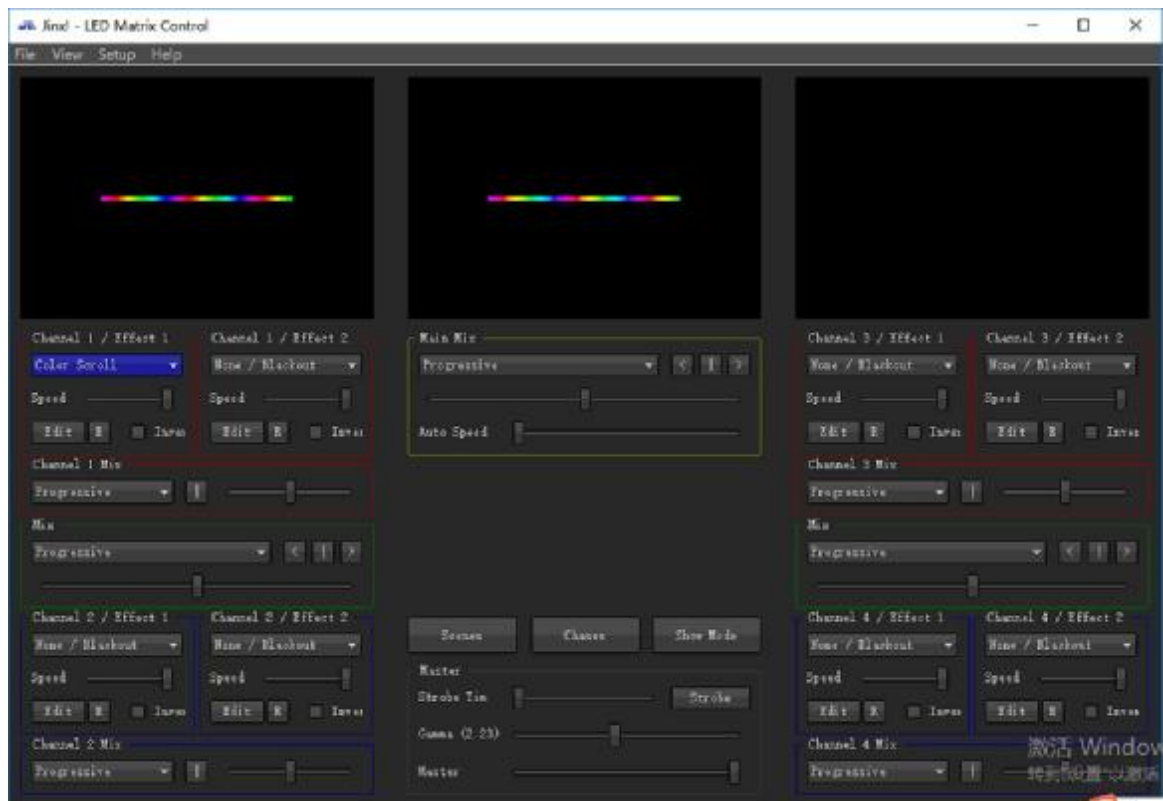
Then



Choose "Audio Auto Gain Control" if you need music effect

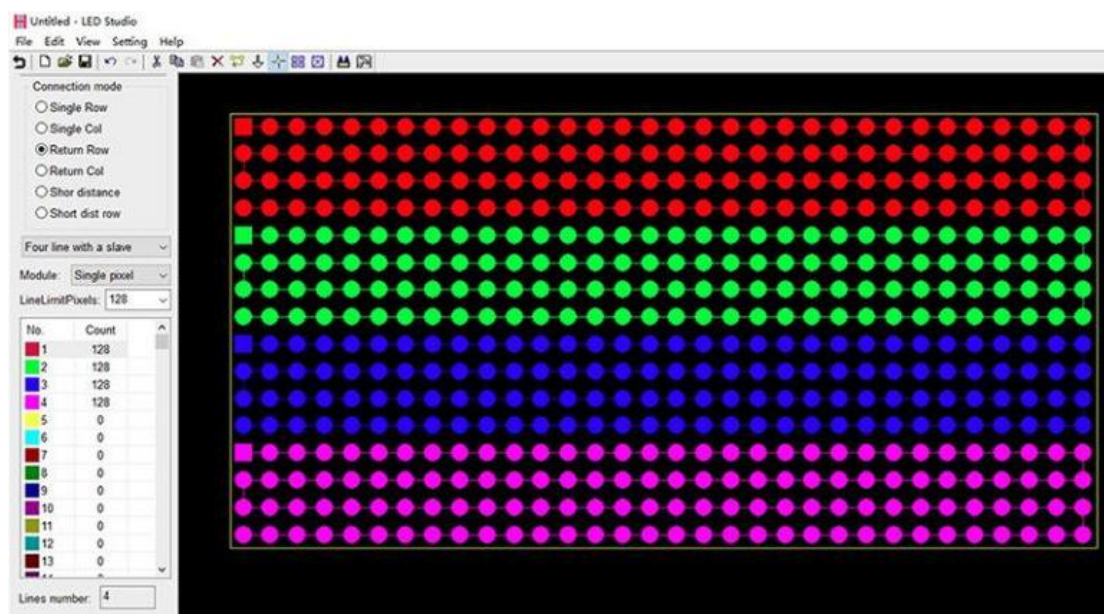


You can use Jinx! to control lights !!! The following is just for example

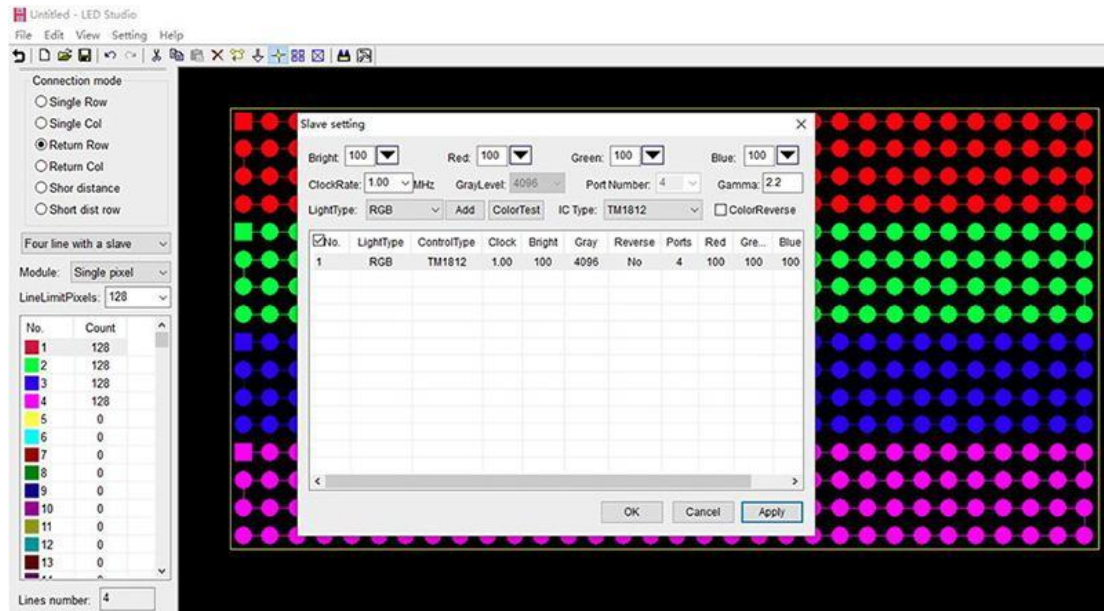


7. Basic Working Procedure for Led Studio

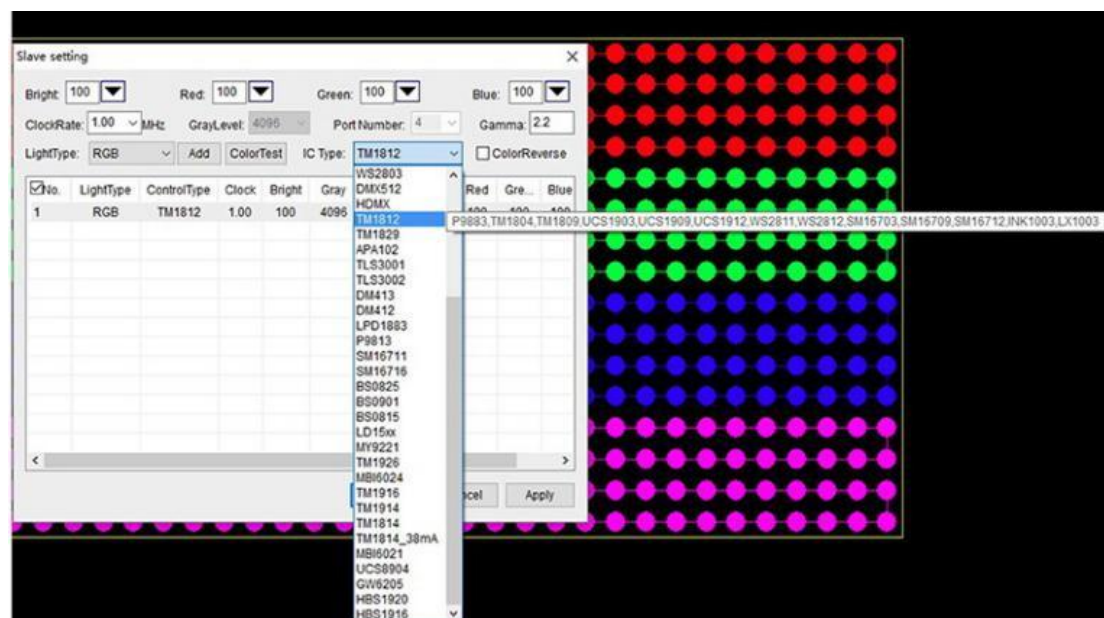
Place Pixels



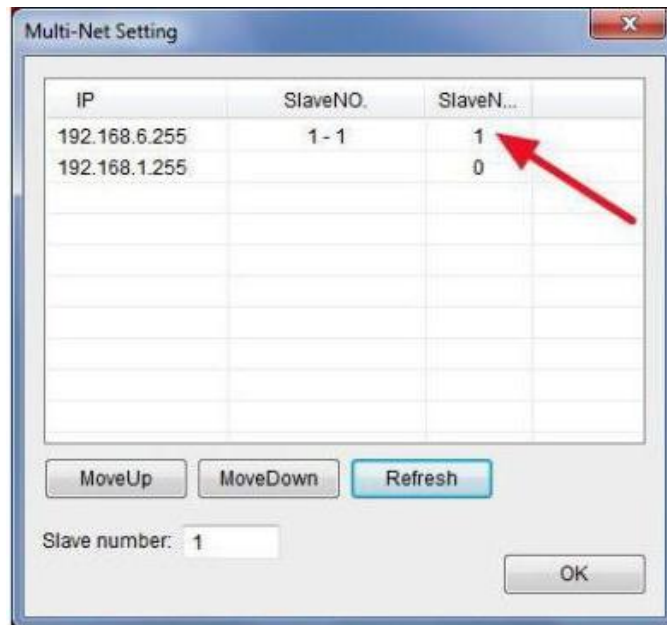
Slave setting



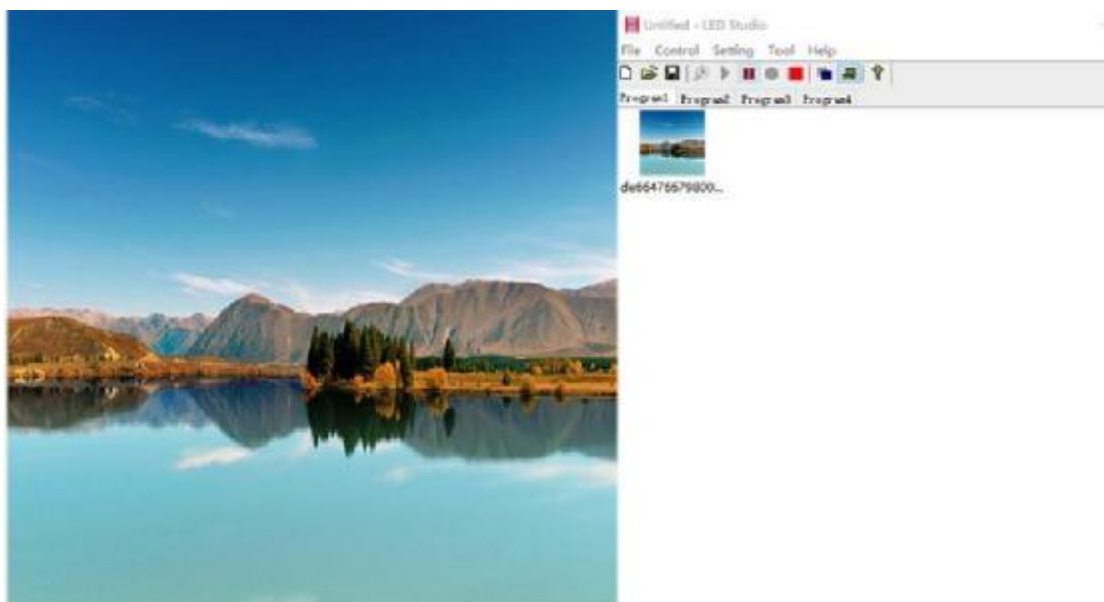
Note: many chips use one option



Allocate controller for the specified IP address.




Make Animation



8. Set Address for DMX512 chips

(1). Please connect your lamp to controller according to the connection method i post above(under PCB Layout).

(2). In LED Studio, click "Setting" -- "H802RA Setting".



The image shows the 'H802RA Setting' dialog box with the 'DMX Addressing' tab selected. The 'IP and ArtNet settings' tab is also visible. The 'DMX Chip Type' is set to 'TM512, UCS512'. 'Each chip channels' is set to '3'. 'DMX start channel address' is set to '1'. There is a checkbox for 'Enable Smart white light, allowing maximum color' which is unchecked, and a dropdown for '0'. 'Grayscale' is set to '1024' and 'refresh rate' is set to '1024'. The 'encryption' section has 'Encryption times' set to 'Unencrypt', 'Enter your password' and 'Enter it again' fields with masked characters, and 'Limit the frequency of use' set to '1'. An 'encrypt and decode' button is present. 'OK' and 'Cancel' buttons are at the bottom.

H802RA Setting

IP and ArtNet settings DMX Addressing

DMX Chip Type: TM512, UCS512

Each chip channels: 3

DMX start channel address: 1

☐ Enable Smart white light, allowing maximum color 0

Grayscale: 1024 refresh rate: 1024

encryption

Encryption times: Unencrypt

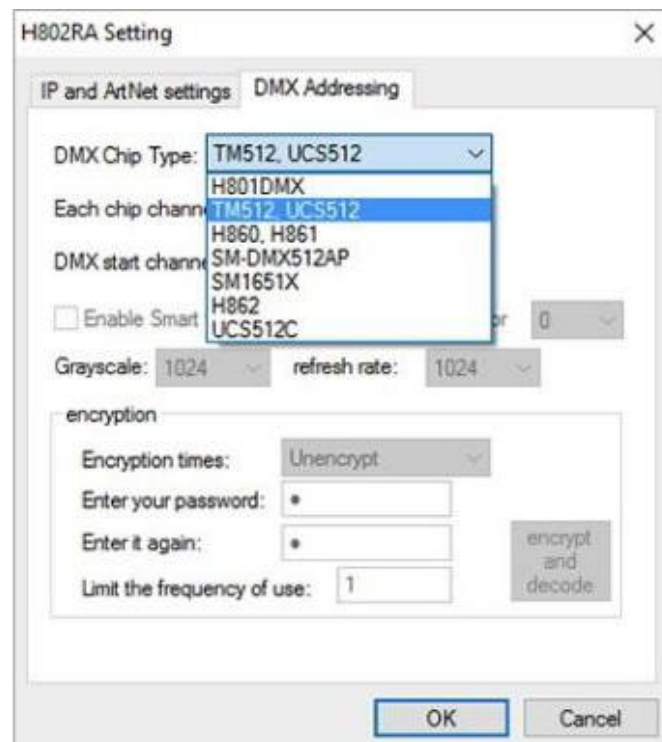
Enter your password: *

Enter it again: *

Limit the frequency of use: 1

encrypt and decode

OK Cancel



The image shows the 'H802RA Setting' dialog box with the 'DMX Addressing' tab selected. The 'IP and ArtNet settings' tab is also visible. The 'DMX Chip Type' dropdown menu is open, showing a list of options: 'TM512, UCS512', 'H801DMX', 'TM512, UCS512', 'H860, H861', 'SM-DMX512AP', 'SM1651X', 'H862', and 'UCS512C'. 'Each chip channels' is set to '3'. 'DMX start channel address' is set to '1'. There is a checkbox for 'Enable Smart white light, allowing maximum color' which is unchecked, and a dropdown for '0'. 'Grayscale' is set to '1024' and 'refresh rate' is set to '1024'. The 'encryption' section has 'Encryption times' set to 'Unencrypt', 'Enter your password' and 'Enter it again' fields with masked characters, and 'Limit the frequency of use' set to '1'. An 'encrypt and decode' button is present. 'OK' and 'Cancel' buttons are at the bottom.

H802RA Setting

IP and ArtNet settings DMX Addressing

DMX Chip Type: TM512, UCS512

Each chip channels: 3

DMX start channel address: 1

☐ Enable Smart white light, allowing maximum color 0

Grayscale: 1024 refresh rate: 1024

encryption

Encryption times: Unencrypt

Enter your password: *

Enter it again: *

Limit the frequency of use: 1

encrypt and decode

OK Cancel

After several seconds, lamp will turn white then green, please repower the lamp.

H802RA can address for maximum 1024 pixels.

9. Specifications

Input Voltage: Customized

Power Consumption: 1.3W

Drive Pixels Number: 4096

Weight: 1KG

Dimension: L163 x W155 x H54

Carton Size: L205 x W47 x H21