

Manual Date : 2016.07.08

# Installation Manual

Video Interface for Porsche PCM4.0

Model : QPI\_PCM4.0



# • Specification

**Car Compatibility** : 2016 Porsche model with PCM4.0

**Components** : Interface\* 1ea

## **Multimedia interface Input/output spec**

Input : Analog RGB\*1, A/V\*1, CVBS(Rear Camera)\*1  
CVBS(Front Camera)\*1  
Output : To LCD\*1

## **Power spec**

Input power : 8VDC ~ 18VDC  
Consumption : 5WATT

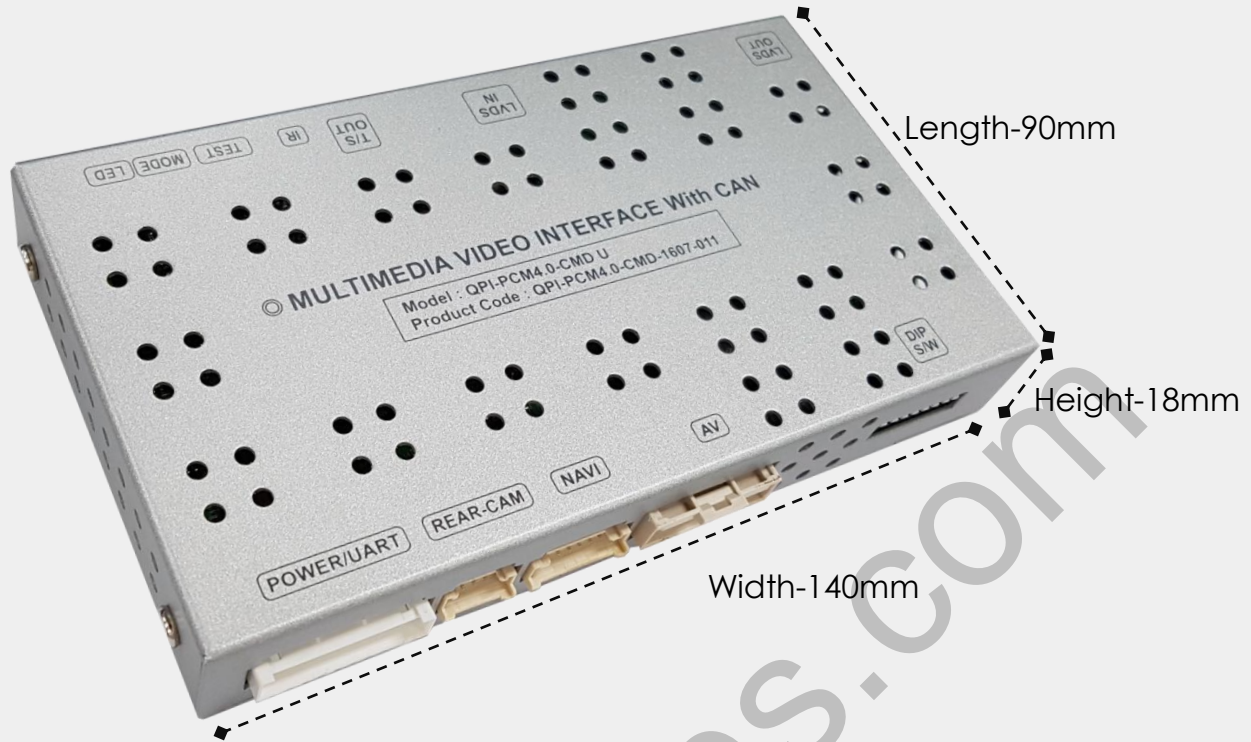
## **Switch input mode**

- External video sources skip function : able to control input videos on and off via DIP switches.
- Able to switch videos via the remote, button switch, and original buttons.

# • Features

- Control external videos sources (DVD, DTV) via Multi Media Touch GUI
- Adjust external videos screen position
- Check the improved Screen Display (User Friendly Interface)
- Switch modes via original OEM button
- Supply power to connect rear view camera (Back up camera)
- Assist your parking via Dynamic PAS(Parking Assistance System), PDC(Parking Distance Control), moving parking line according movement of steering wheel

# • Product exterior



POWER/UART(Power / UART Connection) | REAR-CAM(Rear camera connection)  
 | NAVI(Navigation connection) | AV(AV cable connection)  
 | DIP S/W(Dip switch setting) | LVDS-OUT(Original LVDS cable connection) |  
 LVDS IN(Supplied LVDS cable connection) |  
 T/S OUT | IR(IR cable connection) | TEST(No use) | MODE(Button cable connection) | LED

# • Components



POWER \* 1ea  
(HPOWER0120)



JACK BY JACK \* 1ea  
(HPOWER0121)



NAVI \* 1ea  
(HRGBCA0020)



AV \* 1ea  
(HAVCAB0030)



TOUCH OUT \* 1ea  
(HTOUCH0001)



R-CAM \* 1ea  
(HAVCAB0032)



BUTTON \* 1ea  
(HARETC0001)



IR \* 1ea  
(HIRCAB0002)



RC \* 1ea  
(REMOTE0001)

# DIP SWITCH



※ ON : DOWN / OFF : UP

PIN	FUNCTION	Dip S/W SETTING
1	RGB INPUT MUTE	OFF : RGB DISPLAY ON : RGB Skipping RGB Mode
2	AV1 MODE MUTE	OFF : AV1 DISPLAY ON : Skipping AV1 Mode
3	AV2 MODE MUTE	OFF : AV2 DISPLAY ON : Skipping AV2 Mode
4	AV3 MODE MUTE	OFF : AV3 DISPLAY ON : Skipping AV3 Mode
5	NO USE (OFF)	
6		
7	REAR MODE	OFF : OEM Rear Camera ON : External Rear Camera
8	NO USE (OFF)	

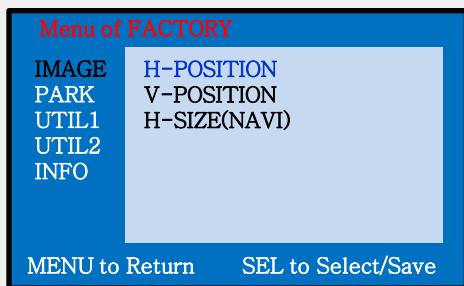
※ Please make sure to disconnect the power cable of the interface and reconnect the power cable again to apply the dip switch setting whenever changing DIP switch. Otherwise, DIP switch setting will not be applied.

# REMOTE CONTROL SETTING



Key	FUNCTION
POWER & PIP	NO USE
MENU	Activating FACTORY MENU
OK	Making a selection, changing image display
▲	Moving upward
▼	Moving downward
◀	Moving leftward (If you press this button 2 seconds long, you can access the factory mode.)
▶	Moving rightward (If you press this button 2 seconds long, you can reset all the data about user environment.)

# • Factory setting

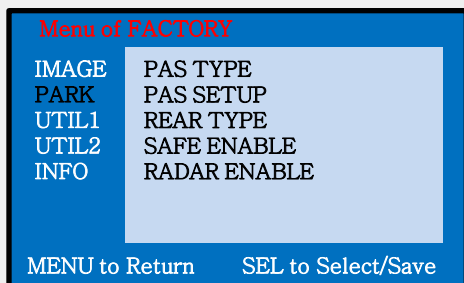


## Adjust a current screen position and size.

H-POSITION : Move display horizontally

V-POSITION : Move display vertically

H-SIZE(NAVI) : Adjust the horizontal size of Navigation

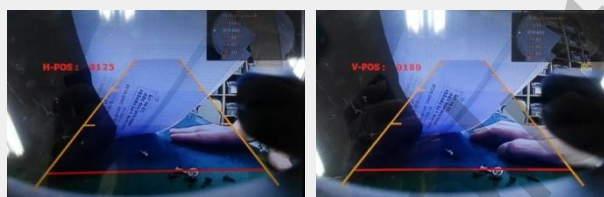


## Adjust rear view camera setting.

PAS TYPE : Select type of parking guide line

- NOT USED : No use parking guide line
- PAS ON : Selecting Dynamic parking guide line
- PAS OFF : Selecting fixed parking guide line

PAS SETUP : Adjusting the position of the parking guide line



<H-POSITION>

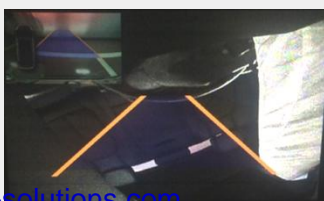
<V-POSITION>

REAR TYPE : Choose rear camera recognition.

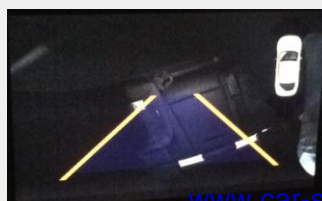
- CAN : By connecting to "CAN" cable of the car gear, changing to rear camera mode when shifting into reverse. (Connect "CAN" cable of the power cable to the "CAN" cable of the car gear.)

SAFE ENABLE : If it is enable, RGB, and A/V mode doesn't show up while driving. (Default : OFF)

RADAR ENABLE : Enable PDC(Parking Distance Control) Sensor  
OFF – No PDC  
OEM PDC ON – OEM PDC on  
EXT PDC ON – PDC on



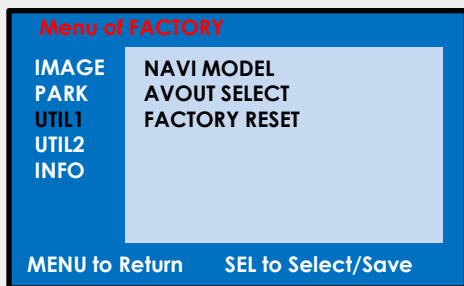
<OEM PDC ON>



<EXT PDC ON>



# • Factory setting



## Navigation & Car model setting up

**NAVI MODEL** : Setting up RGB Navigation.

Default

MYVI\_WVGA

ICUBE\_WVGA

QROI\_WVGA

GI5000A\_WVGA

GI8000N\_WVGA

SMITH\_PAD\_WVGA

WP9200\_WVGA

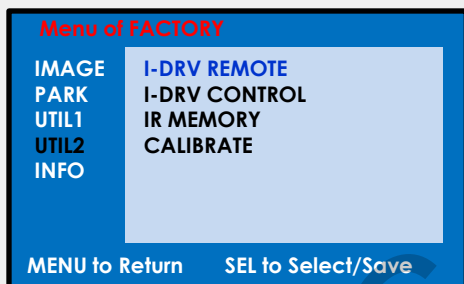
WP9320\_WVGA

KD900\_WVGA

ACCLASS\_WVGA )

**AVOUT SELECT** : Selecting background sound through car AUX (AV1, AV2, AV3)

**FACTORY RESET** : Reset the factory setting



## Other options setting up

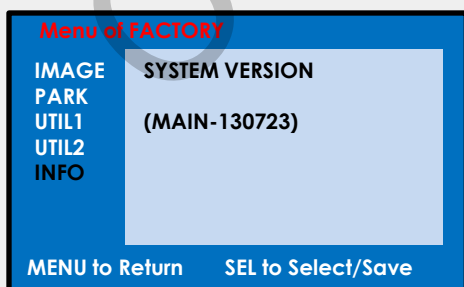
**I-DRV REMOTE** : Able to use remote control on DVD, DTV by selecting "User" after IR memory registered. (Default, User)

**I-DRV CONTROL** : Turning on or off of Remote control usage.

**IR MEMORY** : Registering IR memory (Remote control values) of DTV, DVD.

**CALIBRATE** : Calibrate touch.

※ Please refer to "IR Manual" for IR set up.



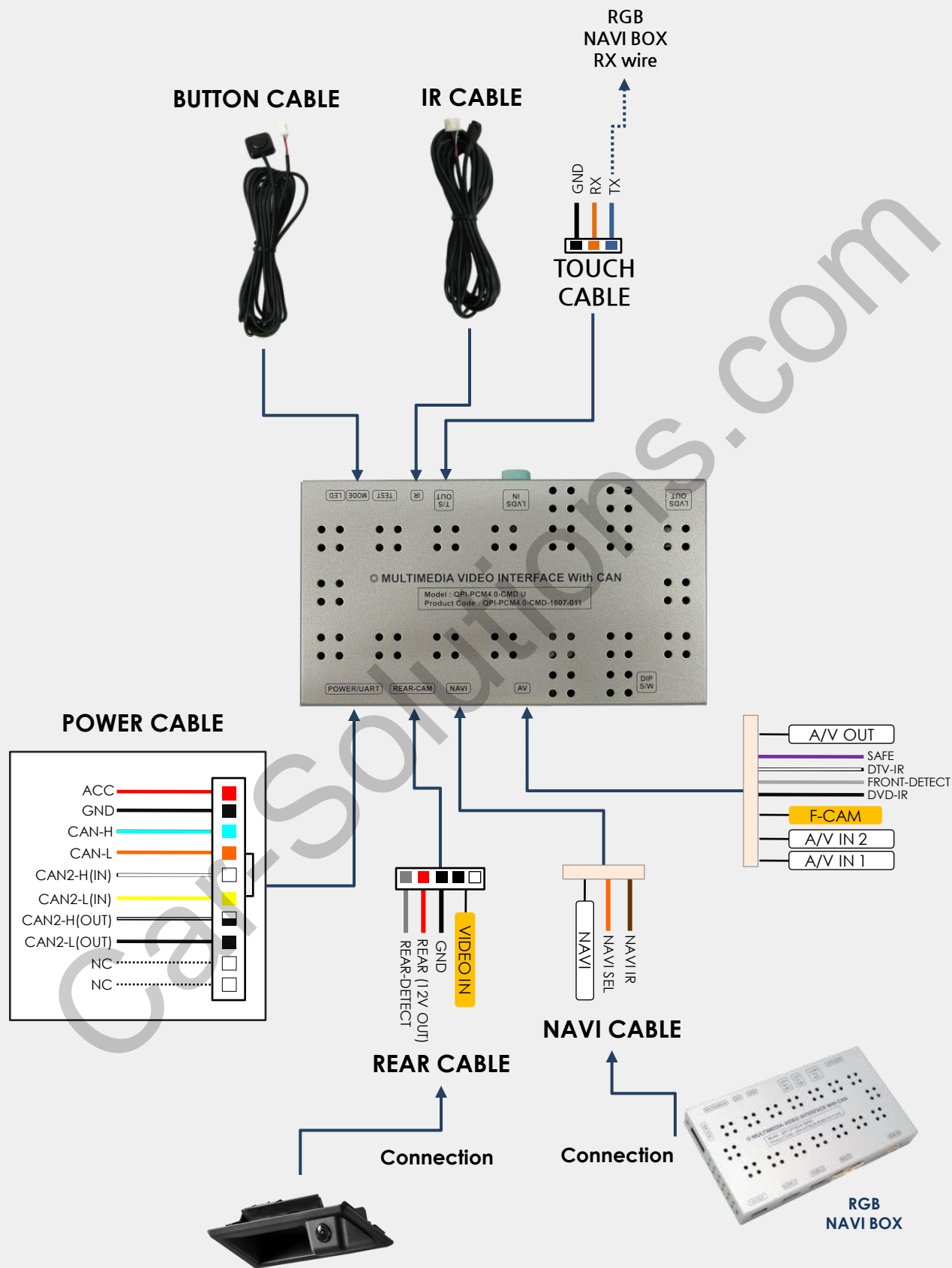
## System version information

# • OEM Buttons Usage



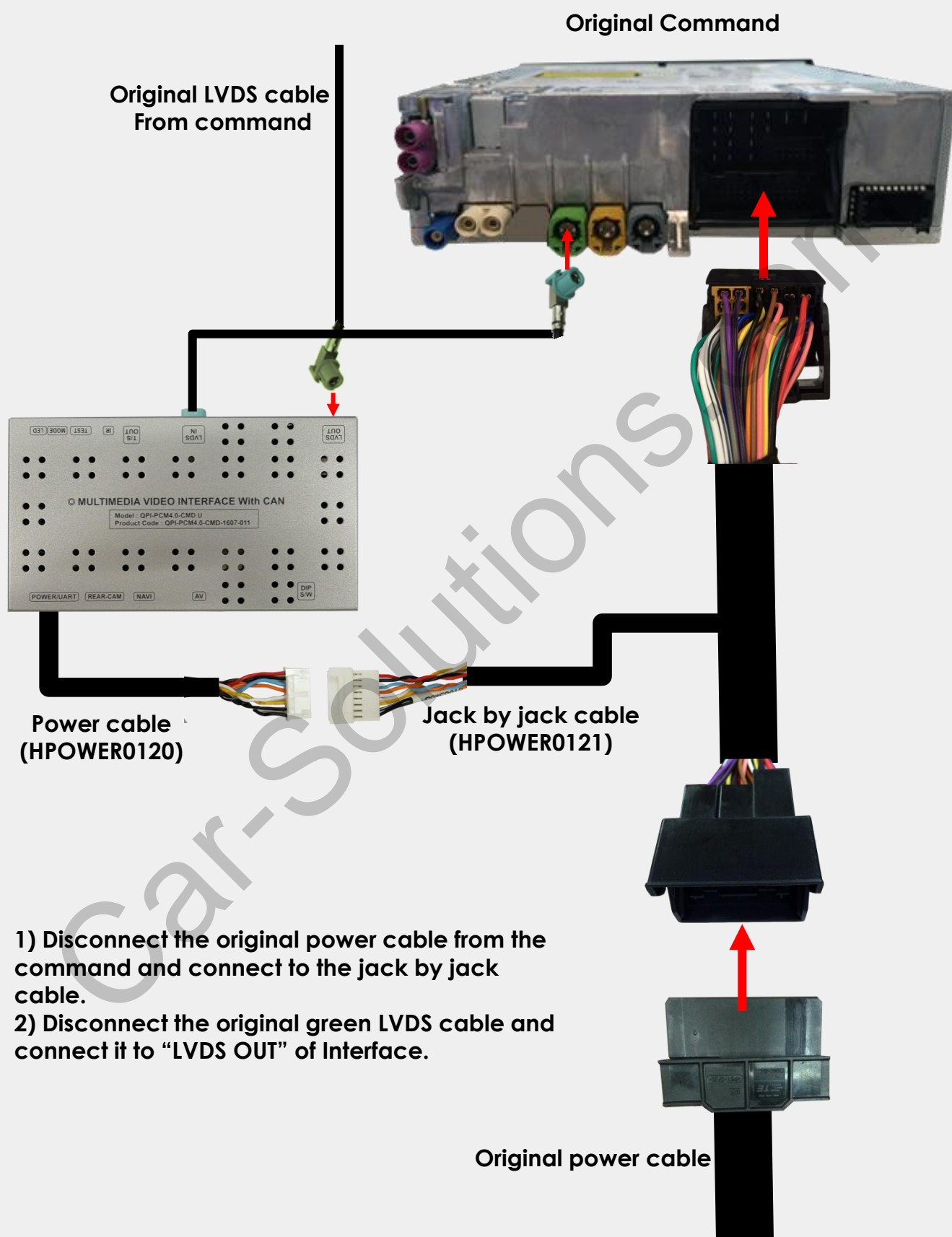
BUTTON	Press	Function
HOME	Long press (2 sec)	Switch modes (OEM→NAVI→AV1→AV2→ AV3)
BACK		Activate front camera
OPT	Long press (7 sec)	RESET
HOME		
OPT	Short press	Back to OEM screen
TUNER		
MEDIA		
NAVI		
MAP		
SOURCE		
PHONE		
CAR		
BACK		
Support@car-solutions.com		

# • Installation Diagram





# • Power / LVDS cable connection



- 1) Disconnect the original power cable from the command and connect to the jack by jack cable.
- 2) Disconnect the original green LVDS cable and connect it to "LVDS OUT" of Interface.

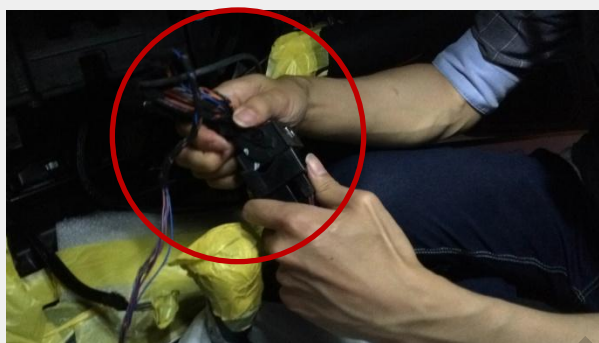
# • Power / LVDS cable connection



Take out the monitor from the center fascia.



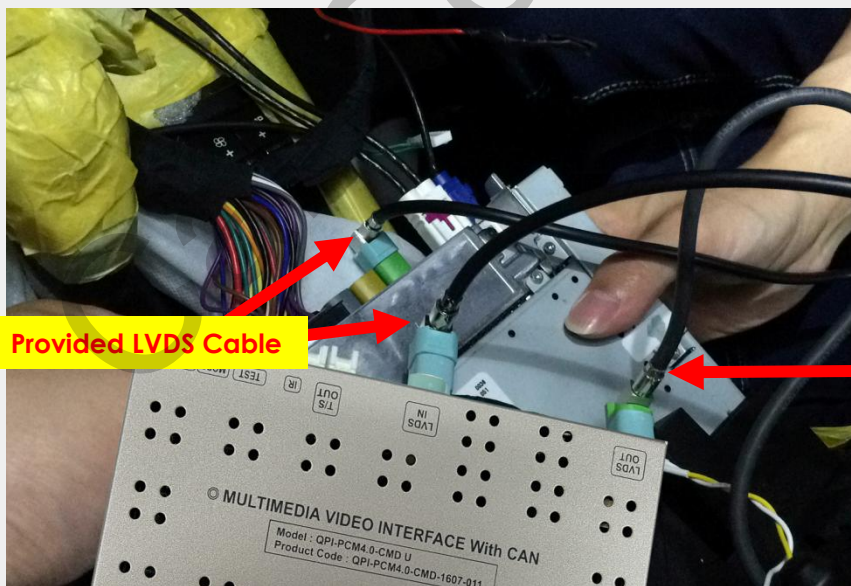
Disconnect all cables from the command.



Connect a bunch of cables from the command to a female connector of Jack by jack cable.



Connect the other side of Jack by jack cable (Male) to the command.



Provided LVDS Cable

Original LVDS Cable

Connect the original LVDS cable (Green) from the command green connector to "LVDS OUT" and connect the provided LVDS cable to the command and "LVDS IN" of interface.

# • Trouble shooting

## **Q. I cannot change mode**

A. Check connection of Ground cable and IR Cable. Check LED lamp is on, if not check connection of POWER cable.

## **Q. All I got on the screen is black.**

A. Check second LED lamp of the interface is on, if not, check A/V sources connected are working well.  
(Second lamp indicates AV sources connected works well.)  
Check interface connection has been done well.

## **Q. Displayed image color is not proper (too dark or unsuitable color)**

A. Press ► button on the remote control for 2 seconds and check how it goes, if it does not work, inform to manufacturer.

## **Q. I cannot watch the rear camera on the screen**

A. Set the DIP switch #7 as state "ON".

## **Q. Set mode not appear**

A. Check DIP Switch.

## **Q. OEM image is not displayed.**

A. Check interface's LCD In/Out cable connection. If the status keeps on, inform to manufacturer.

## **Q. Screen only displays white color.**

A. Check LCD out cable is connected well, if this status keeps, inform to manufacturer.

## **Q. If no image is shown on screen after connecting CAN wire with Park gear.**

A. Go on the "FACTORY MODE", check "UTIL-Rear Select". If "LAMP", change the setting as "CAN" with the remote control. (※ when connecting Rear-C wire of LAMP power cable to Backup lights, Setting should be like this / CAN : if controlling rear camera with CAN wire)

## • Revision History

Date	History	Page