
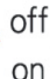


# User Manual

**IU30P** – PEUGEOT VIDEO INTERFACE (FPG & PDC)

Car-solutions.com

## 1) COMPATIBLE VEHICLE : PEUGEOT NEW 208 , NEW 2008, NEW 308

(1) HOW TO SET S/W MODE [ (ON) 0 :  / (OFF) 1 :  ]



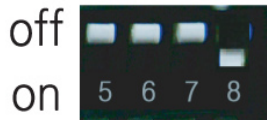
DIP\_SW1 : Navigation On/Off

DIP\_SW2 : AV1 On/Off

DIP\_SW3 : AV2 On/Off

DIP\_SW4 : Rear View Camera On/Off

DIP\_SW5 : 208 Off/ 308 On



1,1,1,0 : PEUGEOT 208 (NO FPG SIGNAL)



0,1,1,0 : PEUGEOT NEW 308 (FPG)

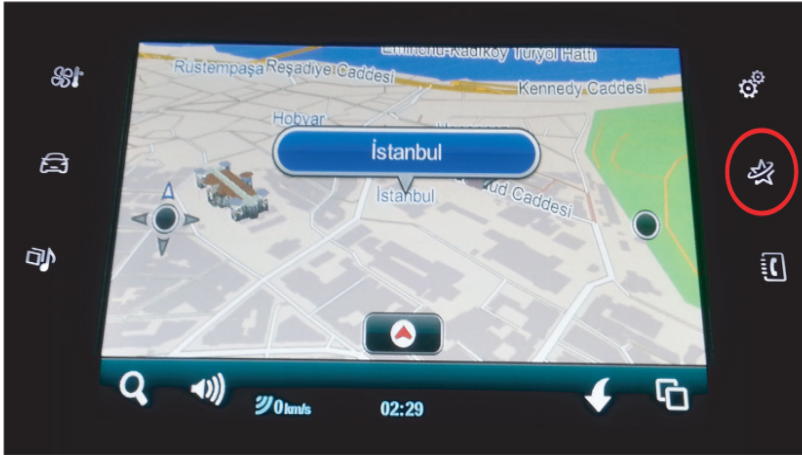
## 2) REAR VIEW CAMERA SWITCHING :

- **MUST CONNECT REVERSE SIGNAL WIRE WHEN INSTALLING REAR VIEW CAMERA TO THE PEUGEOT NEW 208**
- **PEUGEOT NEW 308 REAR VIEW CAMERA IS WORKING BY CAN SIGNAL AUTOMATICALLY. NEED TO CONNECT REAR ACC 12V.**

## (2) HOW TO SCREEN SWITCH (SOURCE INPUT CHANGE)

NEW 208 :PRESS MENU BUTTON 2SECONDS.

NEW 308 :PRESS  , SRC 2SECONDS

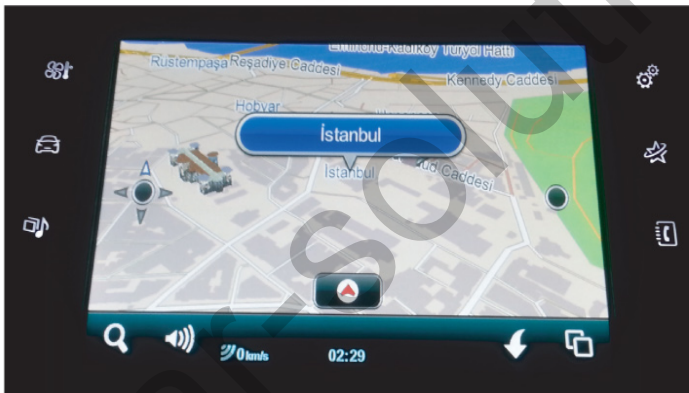




〈NEW 308 SCREEN SWITCHING BUTTON1〉



〈NEW 308 SCREEN SWITCHING BUTTON2〉

## (3) HOW TO ENTER THE REMOTE CONTROL SETTING MENU



PRESS  <sup>7</sup> BUTTON 4TIMES THEN  
YOU WILL SEE THE NUMBERS **1** ON THE  
LEFT TOP OF THE SCREEN FROM 1~4,  
WHEN IT' S NUMBER 4, PRESS THE  
 <sup>1</sup> BUTTON TO ENTER THE SETTING MODE

# [ COMPONENTS ]

