

Last Updated : 2011.09.02

Compatible Car Model : VW car models with RCD 510 2009~



# RCD 510

## Installation

*Volkswagen car models with RCD 510 2009~*

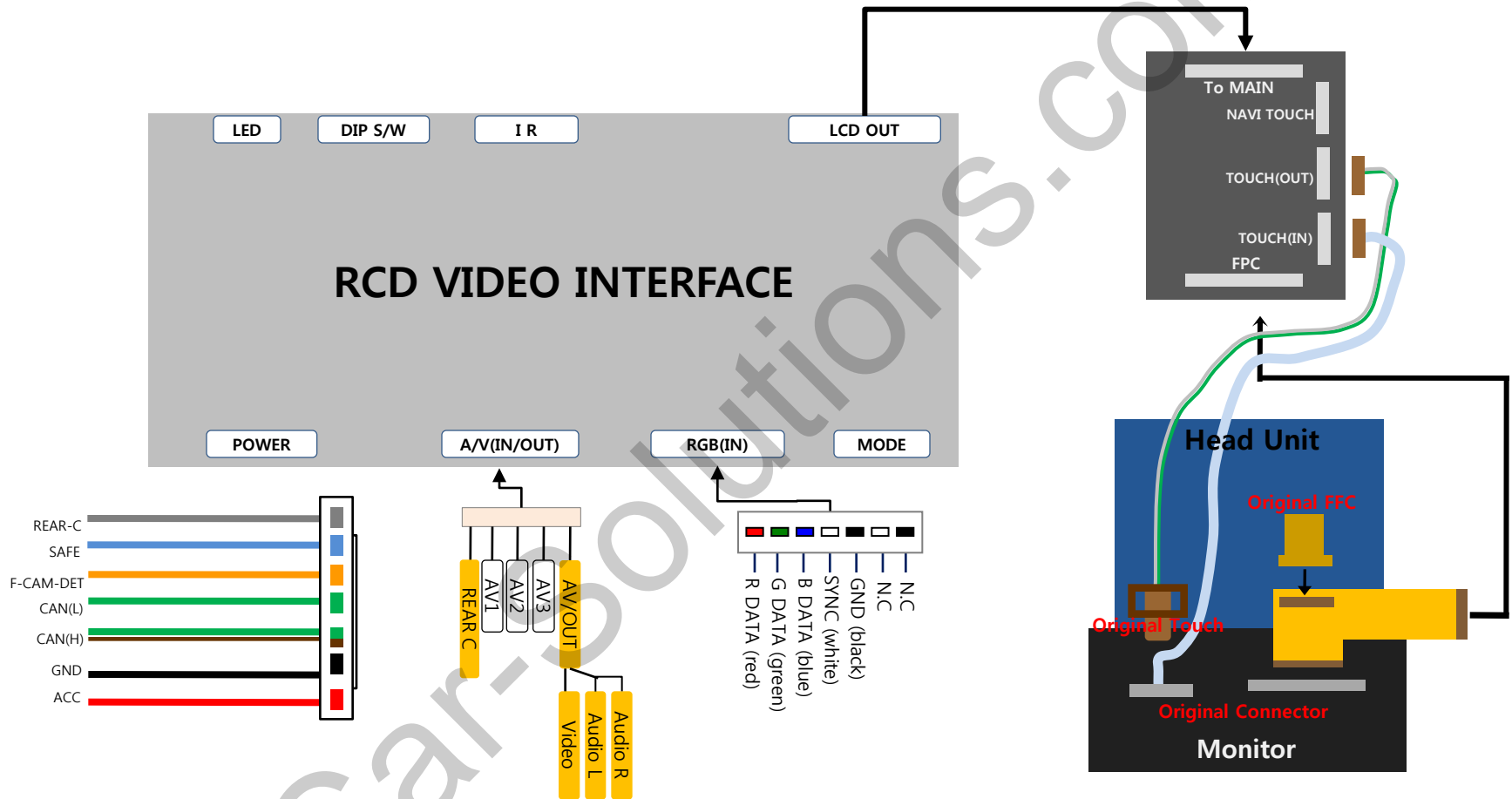
# Contents

1 Cautions on installation	-----	3
2 Installation diagram	-----	4
3 Installation	-----	5

# 1 Cautions on installation

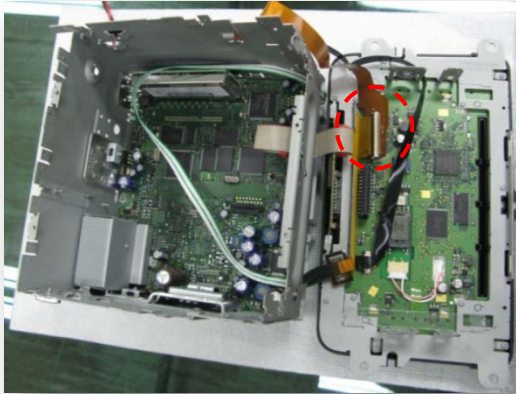
- Ignition key should be taken off before starting installation, interface power connection must be the last step in installation.
- Power cable should be separated when connecting interface.
- Should be no any electronic devices or magnetic pole around installation place.
- All steps of installation should be done by well-trained specialist.
- Dismantling without manufacturer's permission can not be guaranteed, (No permission to break attached label on the board.)
- Kindly check all parts are in the box, when receiving the product, if anything missing, inform to the supplier or manufacturer.
- According to our sales policy, any problems caused by user's mistake, careless can not be guaranteed.

## 2 Installation diagram

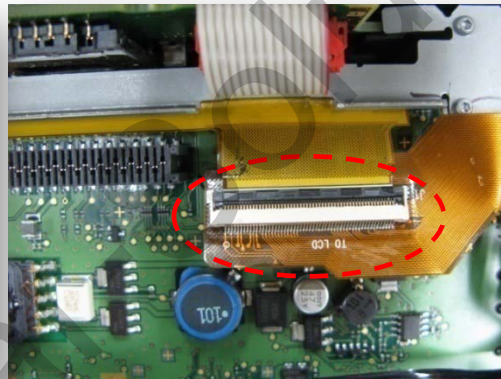
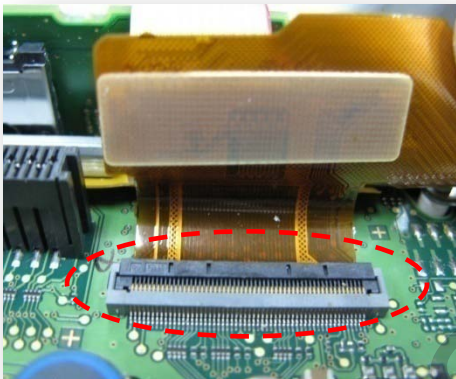


# 3 Installation

## 1. Original FPC cable connection

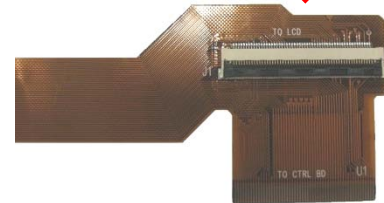


After separating LCD and Head unit board, take apart the original FPC cable.



Connect the separated FPC cable to offered FPC cable (TO LCD), connect the FPC cable (To CTRL BD) to the original connector.

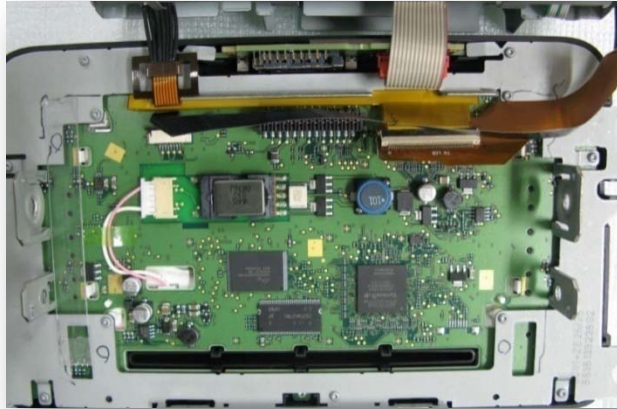
To insert the original cable



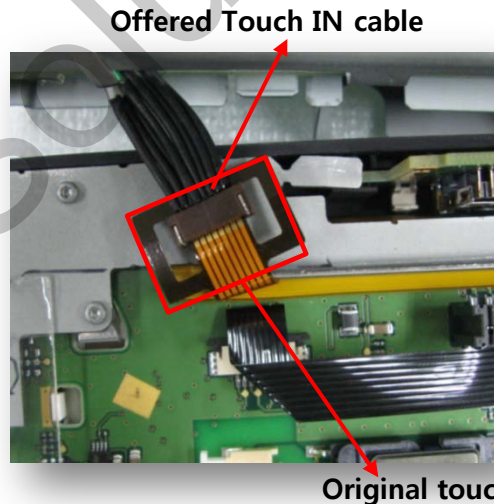
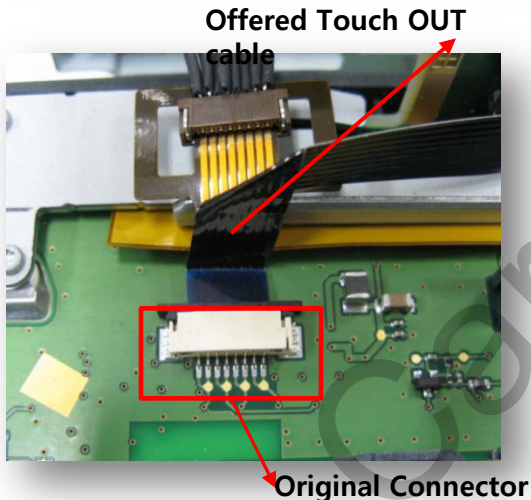
Insert to the original connector

# 3 Installation

## 2. Touch Cable connection



After taking apart the original touch cable from LCD side, connect the offered Touch cable. (Refer to the below how to connect)



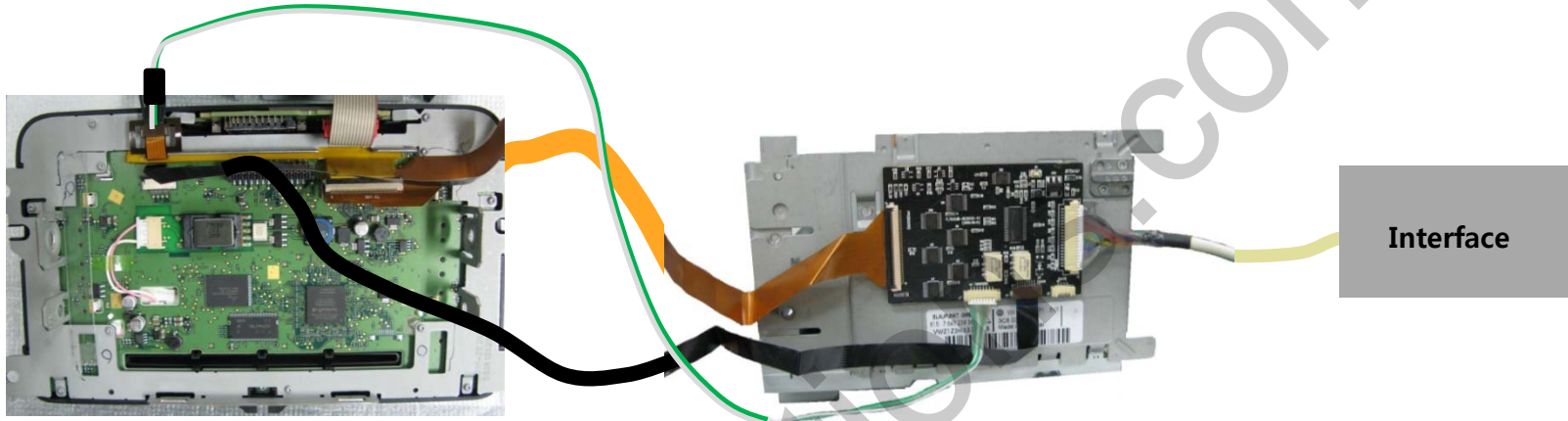
Insert the offered "Touch Out" Cable to the original connector as shown left.

Connect the original touch cable (FPC) to the offered "Touch IN" cable.

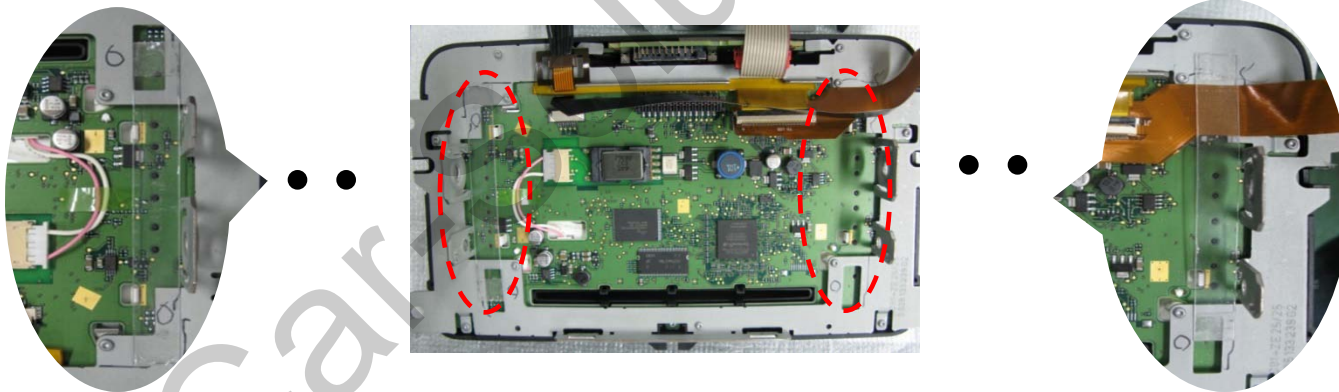


# 3 Installation

## 3. Sub-board Connection



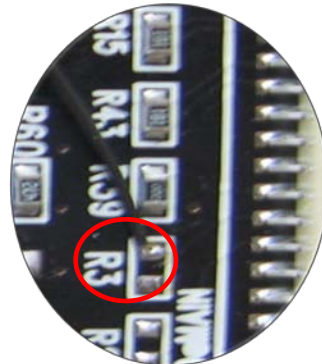
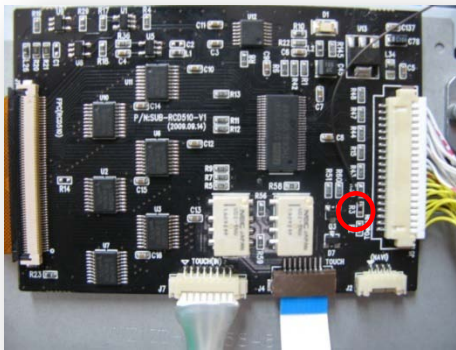
Connect Sub board with the other cables as shown above.



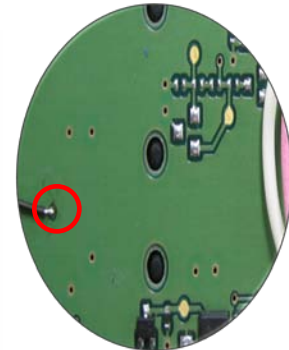
Fix the both edge points on the backside of LCD by supporter panel.

# 3 Installation

[1]

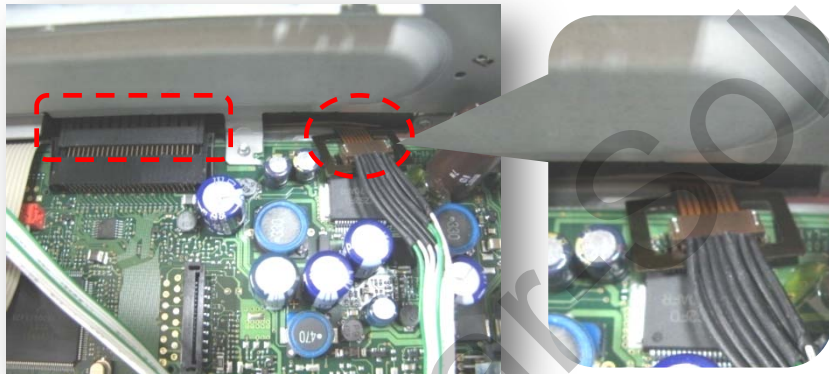


[2]



Solder a wire on "R3" in sub-board as shown left.([1]) Then solder the opposite side of the wire on an original monitor as shown right. ([2])

## ※ Recommended installation method



For safety, connect the original cable which was connected with Touch IN cable, after taking out to head unit side as shown above. Otherwise, LCD might be able to be damaged by contact error of LCD connector.



Connect Touch cable taken out to head unit side to out side as shown above.